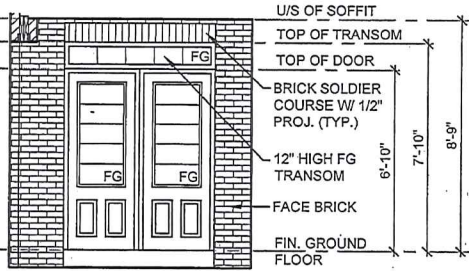
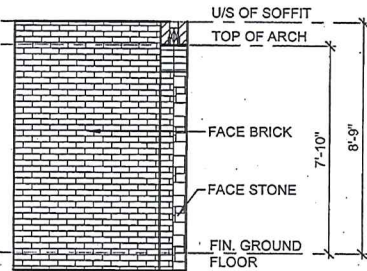


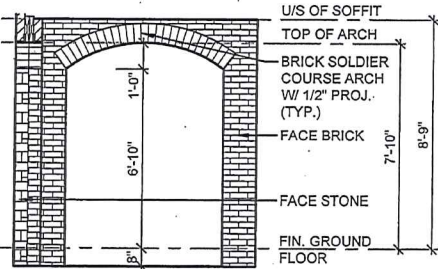
# Exterior Pot Lights



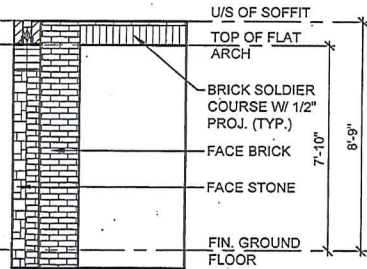
**W** PARTIAL ELEVATION AT COVERED PORCH



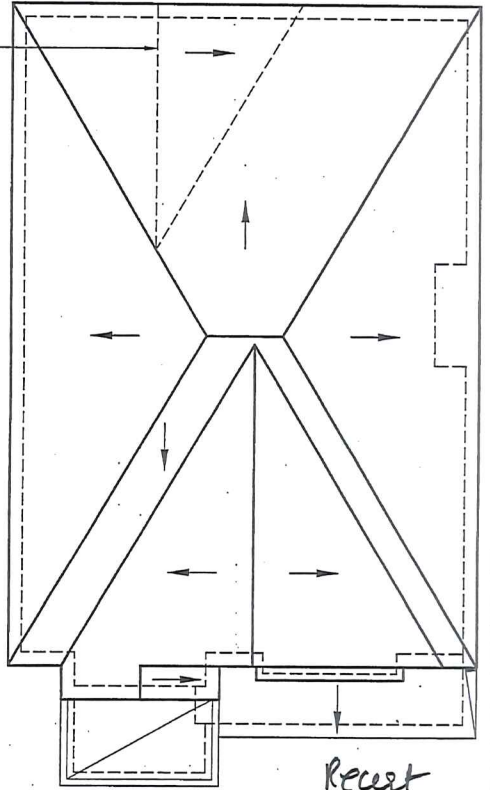
**X** PARTIAL ELEVATION AT COVERED PORCH



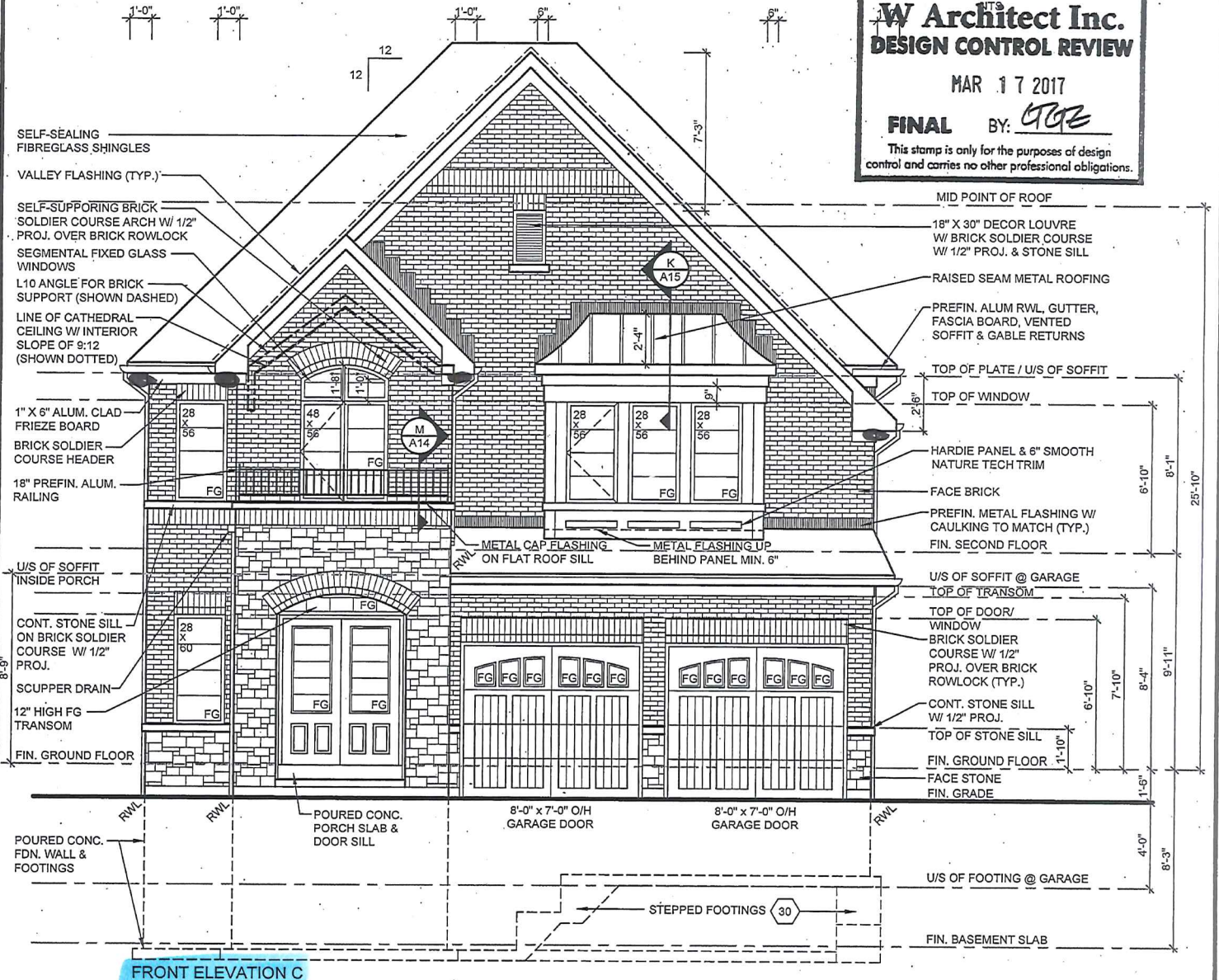
**Y** PARTIAL ELEVATION AT COVERED PORCH



**Z** PARTIAL ELEVATION AT COVERED PORCH



ROOF PLAN  
**W Architect Inc.**  
**DESIGN CONTROL REVIEW**  
MAR 17 2017  
**FINAL** BY: *CTG*  
This stamp is only for the purposes of design control and carries no other professional obligations.



**FRONT ELEVATION C**

Client <b>DELPARK HOMES</b>	Sheet Title <b>FRONT ELEVATION C, ROOF PLAN C &amp; PARTIAL PORCH ELEVATIONS</b>	REGISTERED PERSON: D.W. CASSIDY & CO. ARCHITECTURAL TECHNOLOGISTS FIRM BCIN 28461	Project No. <b>2015-17</b>
Project <b>THE BROOK CITY OF OSHAWA</b>	Scale <b>3/16" = 1'-0"</b>	I, <u>STEPHEN P. KENNEDY</u> have reviewed and take responsibility for this design.	Drawing Number <b>A13</b>
Model / Unit <b>40-6 Elevation B &amp; C (Two Storey)</b>	Date <b>FEB. 2016</b>	Signature <i>[Signature]</i> BCIN 23411 Date: <b>MARCH 6, 2017</b>	60 RANDALL DRIVE SUITE 11 AJAX, ONTARIO L1S 6L3 PH (905) 619-1270 FAX (905) 619-1269
	Drawn by <b>EO</b>		
	Checked by <b>PF</b>		
	<b>ASPEN 6</b>		

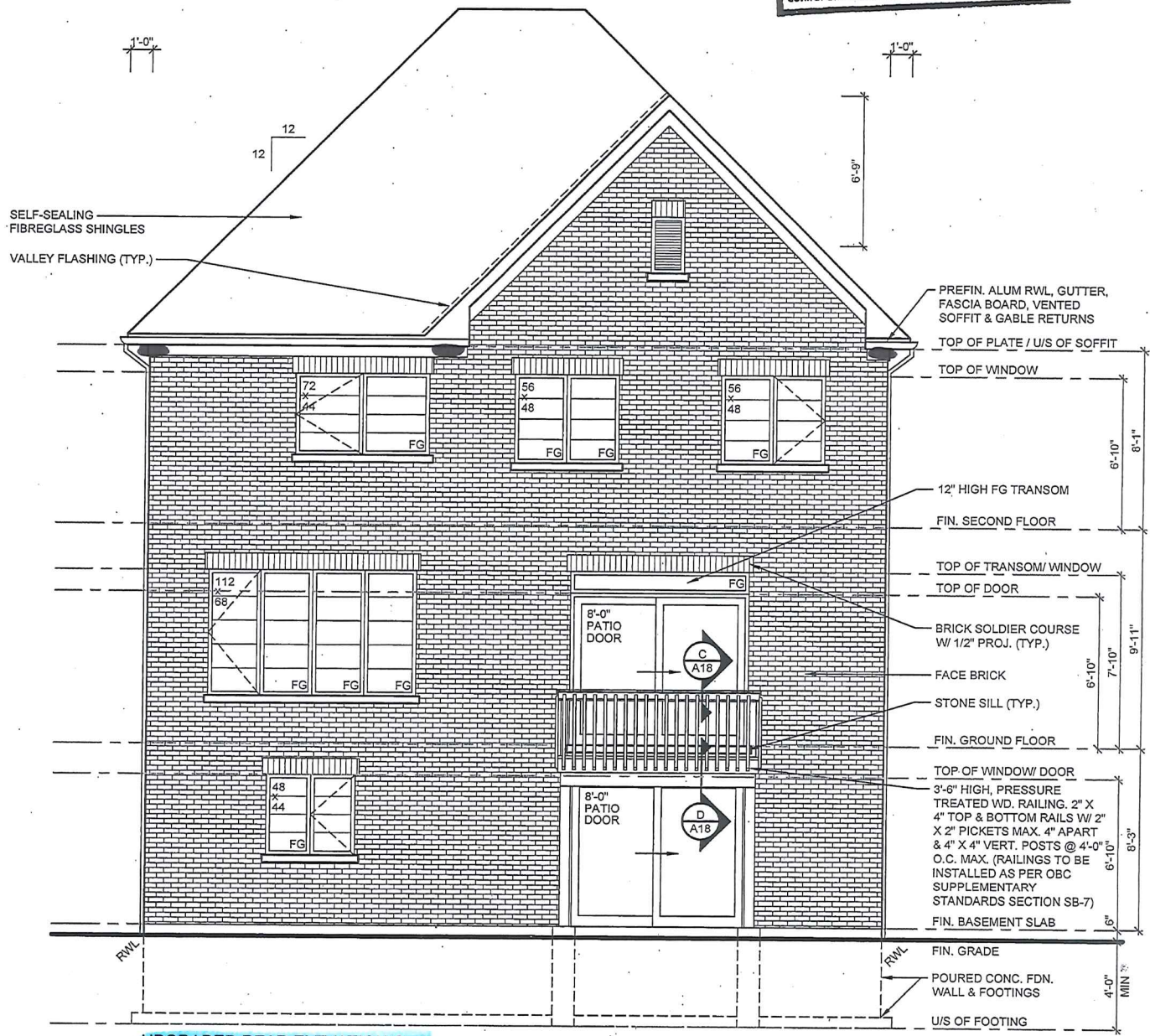
*Rec'd*

**W Architect Inc.**  
**DESIGN CONTROL REVIEW**

MAR 17 2017

**FINAL** BY: *GGE*

This stamp is only for the purposes of design control and carries no other professional obligations.



FOR INFORMATION NOT SHOWN, SEE PREVIOUS SHEETS OF UNIT DRAWING

REFER TO SITINGS FOR ACTUAL GRADE ELEVATIONS ON FRONT, REAR AND SIDE ELEVATIONS

Client  
**DELPARK HOMES**

Project  
**THE BROOK  
 CITY OF OSHAWA**

Model / Unit  
**40-6 Elevation B & C (Two Storey)**

Sheet Title  
**UPGRADED REAR ELEVATION C  
 FOR WALK-OUT BASEMENT**

Scale  
**3/16" = 1'-0"**

Date  
**NOV. 2016**

Drawn by  
**CN**

Checked by  
**TB**

**ASPEN 6**

REGISTERED PERSON:  
**D.W. CASSIDY & CO.**  
 ARCHITECTURAL TECHNOLOGISTS  
 FIRM BCIN 28461

I, **STEPHEN P. KENNEDY** have reviewed and take responsibility for this design.

Signature *[Signature]*  
 BCIN 23411 Date: **MARCH 6, 2017**

**CASSIDY & CO.**  
 ARCHITECTURAL TECHNOLOGISTS

60 RANDALL DRIVE  
 SUITE 11  
 AJAX, ONTARIO  
 L1S 6L3

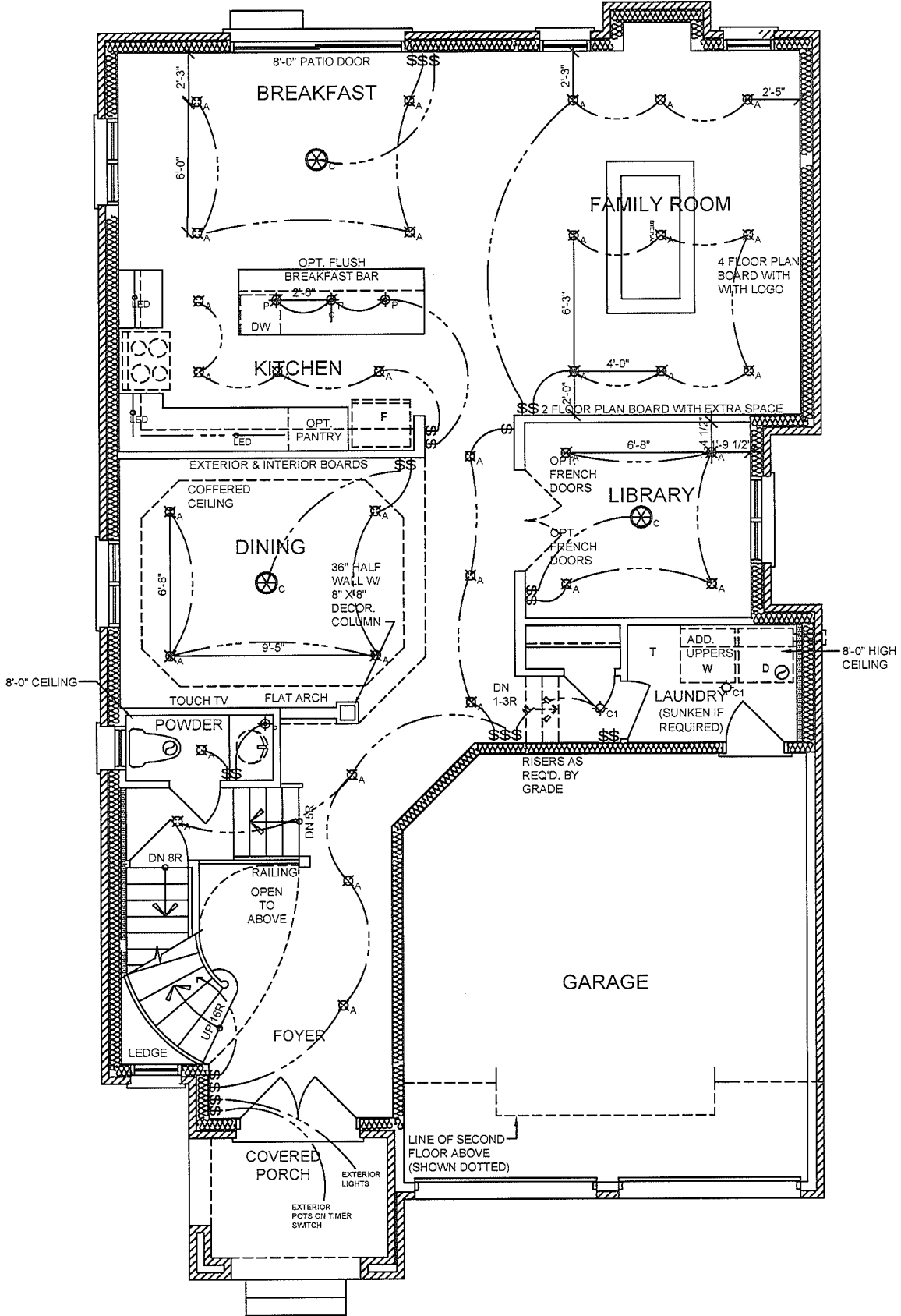
PH (905) 619-1270  
 FAX (905) 619-1269

Project No.  
**2015-17**

Drawing Number  
**A21**

LIGHTING & MECHANICAL SYMBOLS	
	CHANDELIER
	UNDER LIGHT VALANCE
	RECESSED POT FIXTURE
	WALL SCONCE
	WALL SCONCE
	PENDANT FIXTURE
	CEILING FIXTURE

PARTIAL PLAN  
FOR OPTIONAL  
GAS FIREPLACE



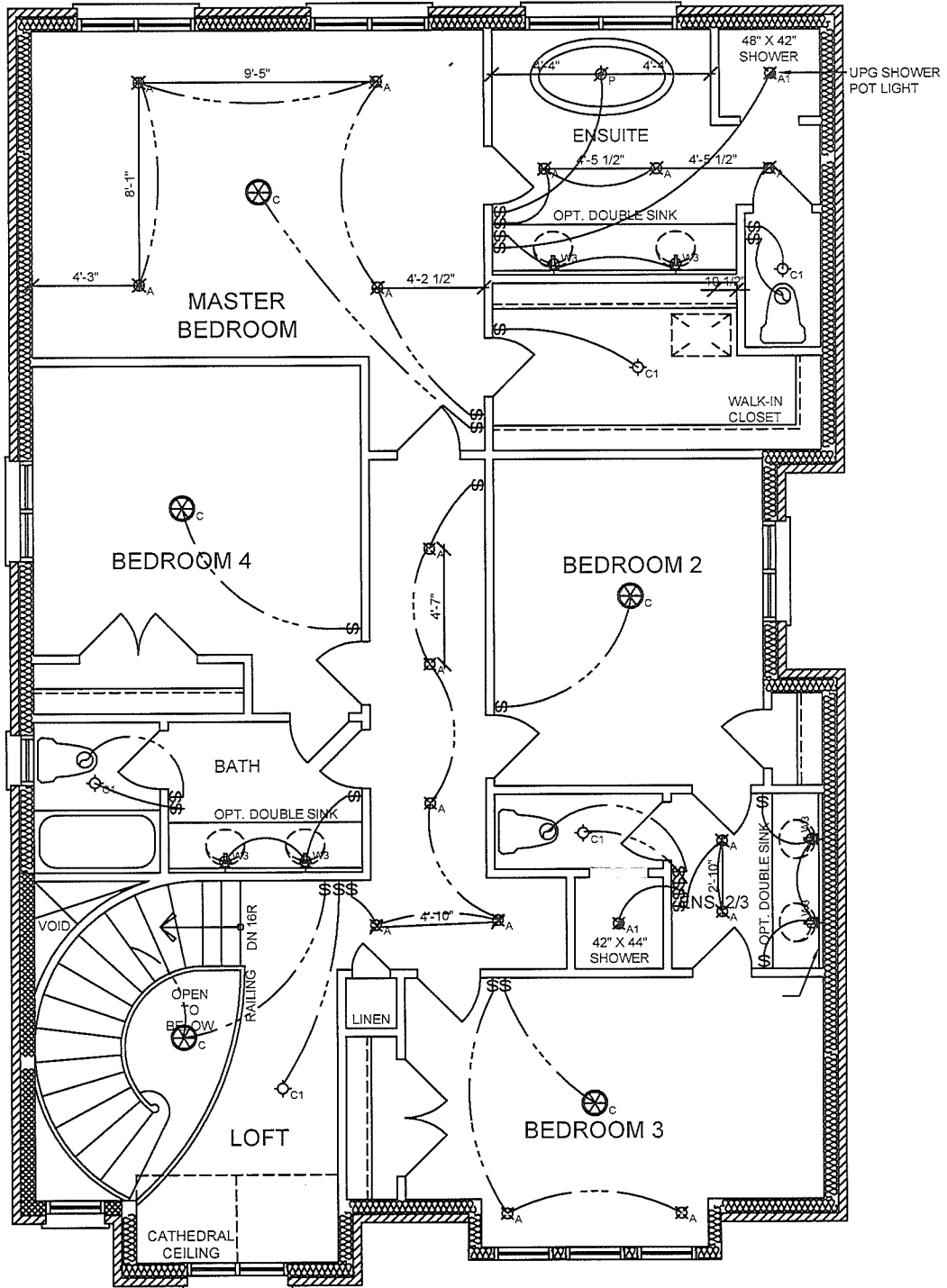
Client DELPARK HOMES
Project THE BROOK CITY OF OSHAWA
Model / Unit 40-6 Elevation B & C (Two Storey)

Sheet Title GROUND FLOOR PLAN ELEVATION C	
Scale SCALE	Drawn by EO
Date FEB. 2016	Checked by PF
ASPEN 6	

LOT#16 MODEL HOME LIGHTING PLAN
Updated: AD April 23 2018

Project No. 2015-17
Drawing Number A7

LIGHTING & MECHANICAL SYMBOLS	
	CHANDELIER
	UNDER LIGHT VALANCE
	RECESSED POT FIXTURE
	WALL SCONCE
	WALL SCONCE
	PENDANT FIXTURE
	CEILING FIXTURE



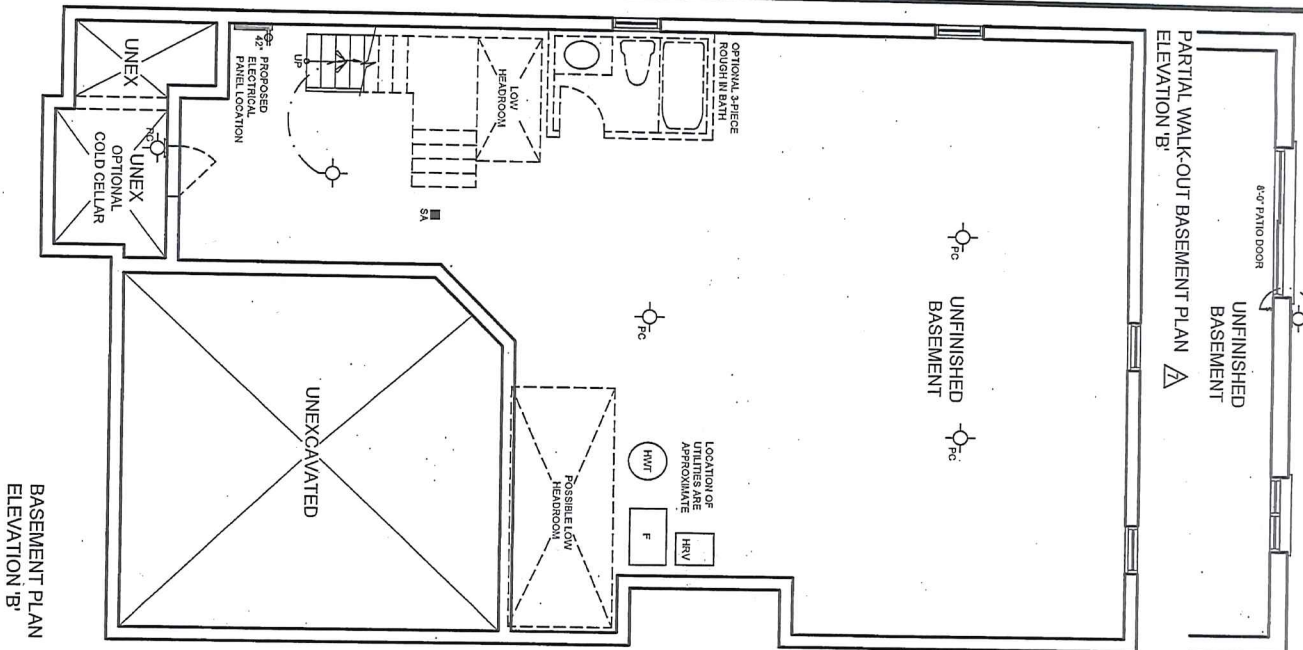
Client DELPARK HOMES
Project THE BROOK CITY OF OSHAWA
Model / Unit 40-6 Elevation B & C (Two Storey)

Sheet Title SECOND FLOOR PLAN ELEVATION C	
Scale SCALE	Drawn by EO
Date FEB. 2016	Checked by PF
ASPEN 6	

LOT#16 MODEL HOME LIGHTING PLAN
Updated: AD April 23 2018

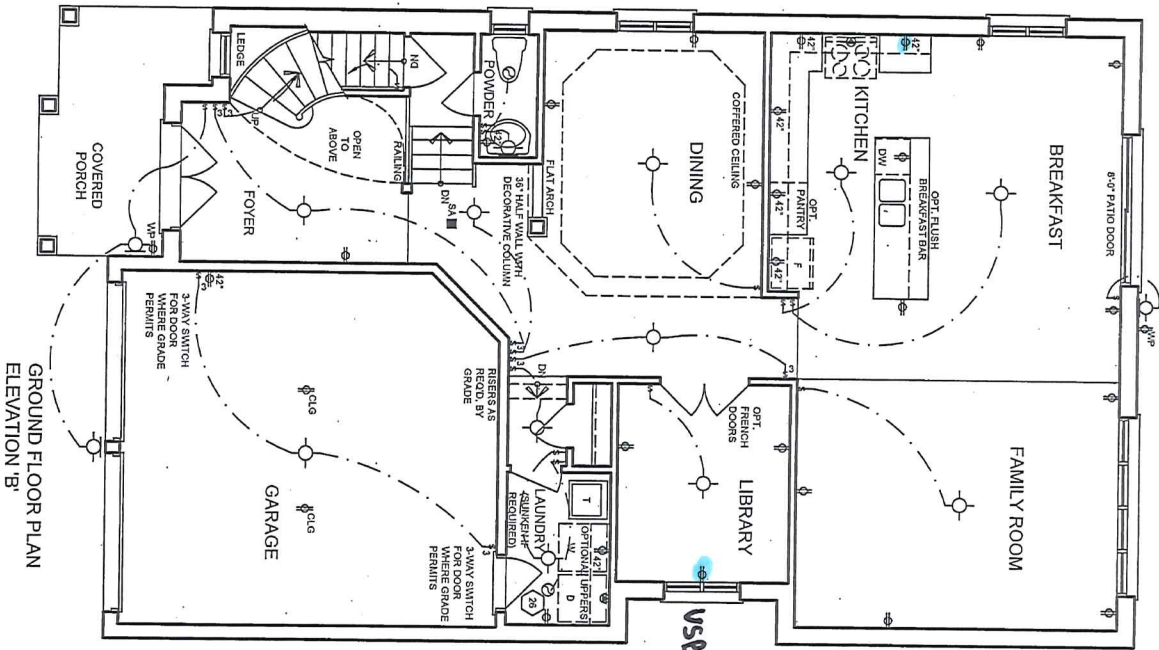
Project No. 2015-17
Drawing Number A8

PARTIAL WALK-OUT BASEMENT PLAN  
ELEVATION 'B'

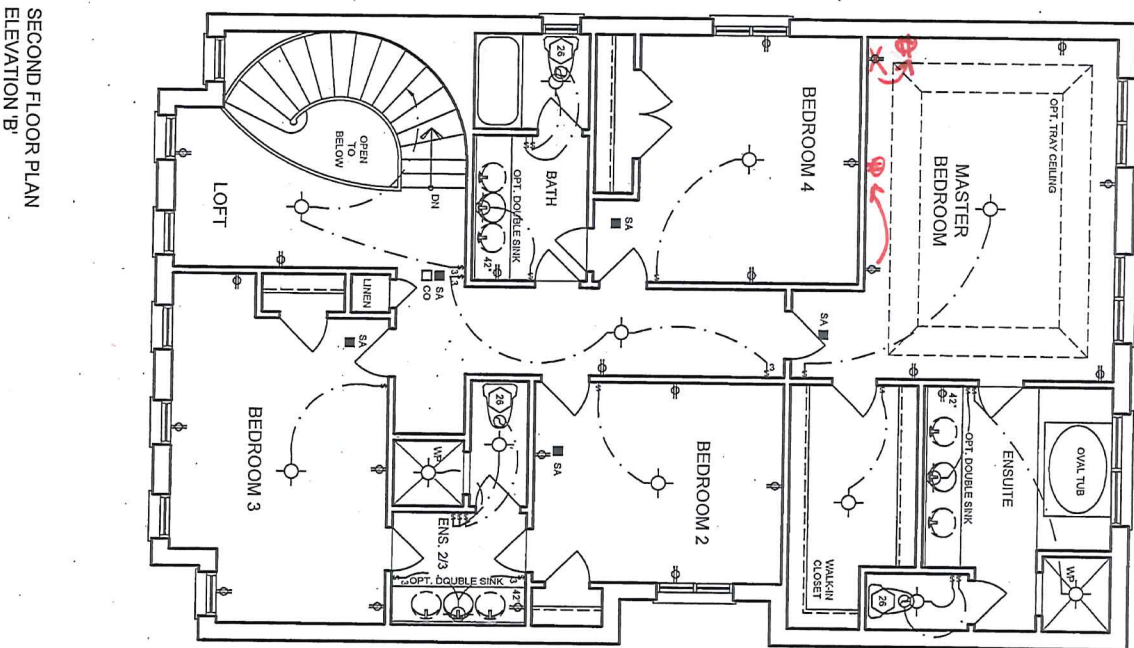


BASEMENT PLAN  
ELEVATION 'B'

USB



GROUND FLOOR PLAN  
ELEVATION 'B'



SECOND FLOOR PLAN  
ELEVATION 'B'

NOTE: ELECTRICAL PLANS ARE  
SIMILAR FOR ELEVATION 'C'

Client <b>DELPARK HOMES</b>	Sheet Title <b>ELECTRICAL PLANS</b>	7 Added Partial Basement Plan for Walk-out Basement	2016-11-17 TB
Project <b>THE BROOK CITY OF OSHAWA</b>	Scale <b>3/16" = 1'-0"</b>	REGISTERED PERSON: <b>D.W. CASSIDY &amp; CO.</b> ARCHITECTURAL TECHNOLOGISTS FIRM BCIN 28461	<b>CASSIDY &amp; CO.</b> ARCHITECTURAL TECHNOLOGISTS <b>2015-17</b>
Model / Unit <b>40-6 Elevation B &amp; C (Two Storey)</b>	Date <b>FEB. 2016</b>	I <u>STEPHEN P. KENNEDY</u> have reviewed and take responsibility for this design. Signature BCIN 23411 Date: <b>MARCH 6, 2017</b>	60 RANDALL DRIVE SUITE 11 AJAX, ONTARIO L1S 6L3 PH (905) 619-1270 FAX (905) 619-1269 Drawing Number <b>A17</b>