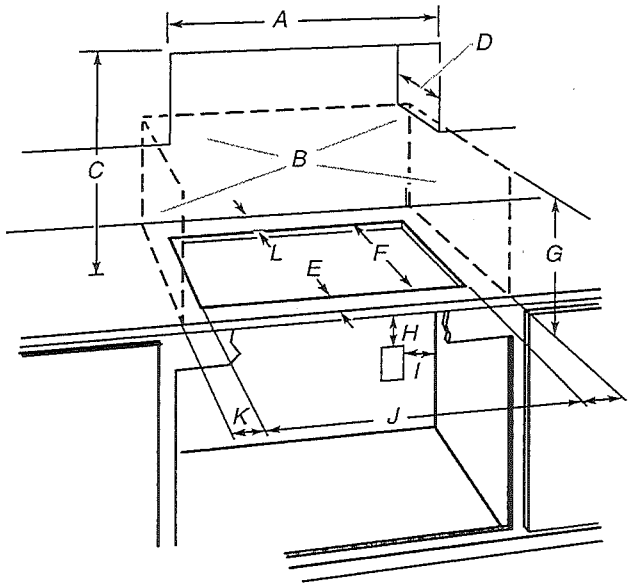


Cabinet Dimensions

IMPORTANT: If installing a range hood or microwave hood combination above the cooktop, follow the range hood or microwave hood combination installation instructions for dimensional clearances above the cooktop surface.



- A. 30" (76.2 cm) on 30" models; 36" (91.4 cm) on 36" models
- B. Combustible area above countertop (shown by dashed box above)
- C. 30" (76.2 cm) minimum clearance between top of cooktop platform and bottom of uncovered wood or metal cabinet (24" [61 cm] minimum clearance if bottom of wood or metal cabinet is covered by not less than 1/4" [0.6 cm] flame retardant millboard covered with not less than No. 28 MSG sheet steel, 0.015" [0.04 cm] stainless steel, or 0.024" [0.06 cm] aluminum or 0.020" [0.05 cm] copper)
- D. 13" (33 cm) recommended upper cabinet depth
- E. 2" (5.1 cm) on most models; 2 3/8" (6.7 cm) on model JEC4430B
- F. 20 1/2" (52.0 cm) recommended cutout. Will fit in cutout from 20 3/8"-20 3/4" (51.8-52.2 cm).
- G. 18" (45.7 cm) minimum clearance from upper cabinet to countertop within minimum horizontal clearances to cooktop
- H. Junction box or outlet: 7" (17.8 cm) minimum from top of countertop
- I. Junction box or outlet: 9" (23.0 cm) maximum from right side of cabinet
- J. 29 1/2" (74.9 cm) recommended cutout on 30" (76.2 cm) models. Will fit in cutout from 29 1/8"-29 3/8" (73.8-75.1 cm) on 30" (76.2 cm) models. 35 1/2" (90.2 cm) recommended cutout on 36" (91.4 cm) models. Will fit in cutout from 34 3/8"-35 3/8" (87.8-90.3 cm) on 36" (91.4 cm) models.
- K. 1" (2.5 cm) minimum distance to nearest left and right side combustible surface above cooktop
- L. 1" (2.5 cm) minimum clearance between back wall and countertop

NOTES: After making the countertop cutout, some installations may require notching down the base cabinet side walls to clear the cooktop base. To avoid this modification, use a base cabinet with sidewalls wider than the cutout.

If cabinet has a drawer, a 5 1/2" (14.0 cm) depth clearance from the top of the countertop to the top of the drawer (or other obstruction) in base cabinet is required.

Electrical Requirements

⚠ WARNING



Electrical Shock Hazard

- Disconnect power before servicing.
- Use 8 gauge copper wire.
- Electrically ground cooktop.
- Failure to follow these instructions can result in death, fire, or electrical shock.

If codes permit and a separate ground wire is used, it is recommended that a qualified electrical installer determine that the ground path and wire gauge are in accordance with local codes.

Check with a qualified electrical installer if you are not sure the cooktop is properly grounded.

Make sure that the electrical connection and wire size are adequate and in conformance with the National Electrical Code, ANSI/NFPA 70-latest edition or CSA Standards C22.1-94, Canadian Electrical Code, Part 1 and C22.2 No. O-M91-latest edition, and all local codes and ordinances.

A copy of the above code standards can be obtained from:

National Fire Protection Association
1 Batterymarch Park
Quincy, MA 02169-7471

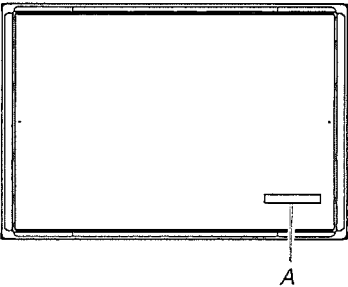
CSA International
8501 East Pleasant Valley Road
Cleveland, OH 44131-5575

Before You Make the Electrical Connection:

To properly install your cooktop, you must determine the type of electrical connection you will be using and follow the instructions provided for it here.

- A 3-wire or 4-wire, single phase, 120/240 volt, 60-Hz., AC only electrical supply is required on a separate, 40-amp circuit fused on both sides of the line. The model/serial number rating plate is located on the metal cabinet underneath the cooktop. See the following illustration.

NOTE: A separate 30-amp circuit fused on both sides of the line can be used for models W5CE3024 and G9CE3065.



A. Model/serial number plate

JUN 22 2017

LOT 36

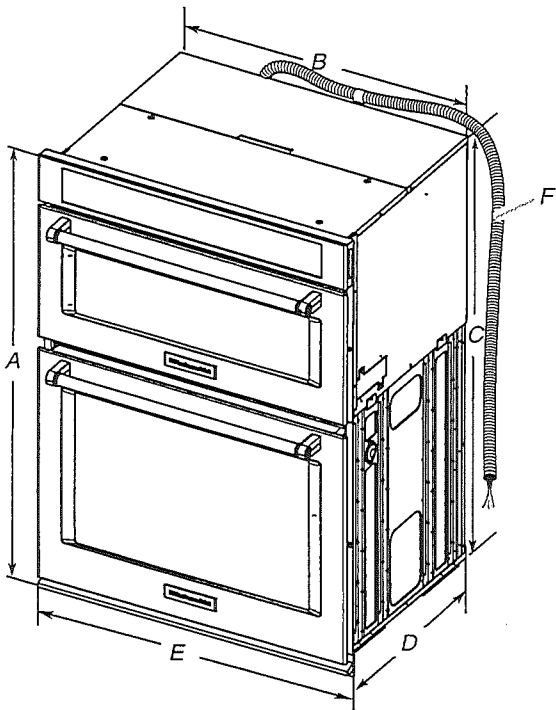
10

- Electrical supply junction box should be located 3" (7.6 cm) maximum below the support surface when the oven is installed in a wall cabinet. A 1" (2.5 cm) minimum diameter hole should have been drilled in the left rear corner of the support surface to pass the appliance cable through to the junction box.
- Oven support surface must be solid, level and flush with bottom of cabinet cutout. Floor must be able to support a total weight (microwave and built-in oven) of 208 lbs (95 kg) for 27" (68.6 cm) models or 249 lbs (113 kg) for 30" (76.2 cm) models.

IMPORTANT: To avoid damage to your cabinets, check with your builder or cabinet supplier to make sure that the materials used will not discolor, delaminate or sustain other damage. This oven has been designed in accordance with the requirements of UL and CSA International and complies with the maximum allowable wood cabinet temperatures of 194°F (90°C).

Product Dimensions

27" and 30" (68.6 cm and 76.2 cm) Ovens

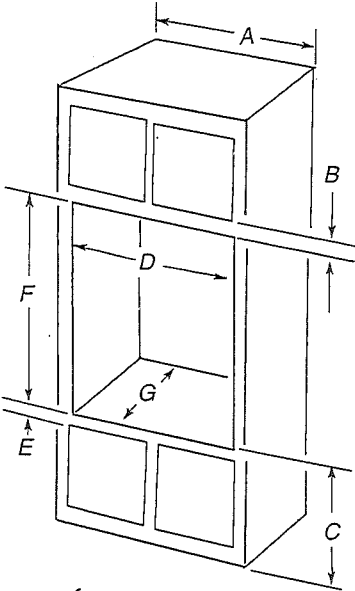


- 27" (68.6 cm) models**
- A. 42⁹/₁₆" (108.0 cm) overall height
 - B. 25⁷/₁₆" (64.6 cm) recessed width
 - C. 41" (104.1 cm) recessed height
 - D. 23¹/₄" (59.1 cm) max. recessed depth
 - E. 27" (68.6 cm) overall width
 - F. 48" (121.9 cm) flexible conduit length measured from the conduit clamp located at the rear of the oven. Do not remove the conduit clamp.

- 30" (76.2 cm) models**
- A. 42⁹/₁₆" (108.0 cm) overall height
 - B. 28⁷/₁₆" (72.2 cm) recessed width
 - C. 41" (104.1 cm) recessed height
 - D. 23¹/₄" (59.1 cm) max. recessed depth
 - E. 30" (76.2 cm) overall width
 - F. 48" (121.9 cm) flexible conduit length measured from the conduit clamp located at the rear of the oven. Do not remove the conduit clamp.

Cabinet Dimensions

27" and 30" (68.6 cm and 76.2 cm) Ovens



- | | |
|---|---|
| 27" (68.6 cm) models | 30" (76.2 cm) models |
| A. 27" (68.6 cm) min. cabinet width | A. 30" (76.2 cm) min. cabinet width |
| B. 1" (2.5 cm) top of cutout to bottom of upper cabinet door | B. 1" (2.5 cm) top of cutout to bottom of upper cabinet door |
| C. 19 ¹ / ₄ " (48.9 cm) bottom of cutout to floor is recommended. 4"-19 ¹ / ₄ " (10.2-48.9 cm) bottom of cutout to floor is acceptable. | C. 19 ¹ / ₄ " (48.9 cm) bottom of cutout to floor is recommended. 4"-19 ¹ / ₄ " (10.2-48.9 cm) bottom of cutout to floor is acceptable. |
| D. 25 ¹ / ₂ " (64.8 cm) cutout width | D. 28 ¹ / ₂ " (72.4 cm) cutout width |
| E. 1 ¹ / ₂ " (3.8 cm) min. bottom of cutout to top of cabinet door | E. 1 ¹ / ₂ " (3.8 cm) min. bottom of cutout to top of cabinet door |
| F. 41 ⁵ / ₁₆ " (105 cm)* recommended cutout height | F. 41 ⁵ / ₁₆ " (105 cm)* recommended cutout height |
| G. 24" (60.7 cm) cutout depth | G. 24" (60.7 cm) cutout depth |

***NOTE:** The cutout height can be between 41" and 41¹/₂" (104.1 cm and 105.6 cm) for microwave/oven combination.

Electrical Requirements

If codes permit and a separate ground wire is used, it is recommended that a qualified electrical installer determine that the ground path and wire gauge are in accordance with local codes.

Check with a qualified electrical installer if you are not sure the oven is properly grounded.

This oven must be connected to a grounded metal, permanent wiring system.

Be sure that the electrical connection and wire size are adequate and in conformance with the National Electrical Code, ANSI/NFPA 70-latest edition or CSA Standards C22.1-94, Canadian Electrical Code, Part 1 and C22.2 No. O-M91-latest edition, and all local codes and ordinances.

A copy of the above code standards can be obtained from:

National Fire Protection Association
 1 Batterymarch Park
 Quincy, MA 02169-7471

CSA International
 8501 East Pleasant Valley Road
 Cleveland, OH 44131-5575

LOT JUN 22 2017

36

10

SE