

KitchenAid® 27" (68.6 cm) and 30" (76.2 cm) Electric Built-In Microwave/Oven Combination

PRODUCT MODEL NUMBERS

KEMS306E KOCE500E KOCE507E

ELECTRICAL CONNECTION

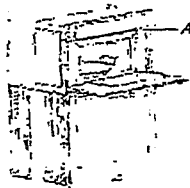
If codes permit and a separate ground wire is used, it is recommended that a qualified electrician determine that the ground path and the wire gauge are in accordance with local codes. Check with a qualified electrical installer if you are not sure the oven is properly grounded.

This oven must be connected to a grounded metal, permanent wiring system.

Be sure that the electrical connection and wire size are adequate and in accordance with the National Electrical Code, ANSI/NFPA 70-label edition or CSA Standard C22.1-84, Canadian Electrical Code, Part 1 and C22.2 No. 0-M51-label edition, and all local codes and ordinances.

To properly install your oven, you must determine the type of electrical connection you will be using and follow the instructions provided for it here.

Oven must be connected to the proper electrical voltage and frequency as specified on the model/serial rating plate. See the following illustration.



A. Model/serial rating plate

Models rated from 7.3 to 9.5 kW at 240 volts (5.4 to 7.4 kW at 208 volts) require a separate 60-amp circuit. Models rated at 4.8 kW and below at 240 volts (3.6 kW and below at 208 volts) require a separate 50-amp circuit.

A circuit breaker is recommended.

Connect directly to the fused disconnect (or circuit breaker box) through flexible, armored or nonmetallic sheathed, copper cable (with grounding wire). See "Make Electrical Connection" section.

Flexible conduit from the oven should be connected directly to the junction box.

Do not cut the conduit. The length of conduit provided is for serviceability of the oven.

A UL listed or CSA approved conduit connector must be provided.

If the house has aluminum wiring, follow the procedure below:

1. Connect a section of solid copper wire to the pigtail leads.
2. Connect the aluminum wiring to the added section of copper wire using special connectors and/or tools designed and UL listed for joining copper to aluminum.

Follow the electrical connector manufacturer's recommended procedure. Aluminum/copper connection must conform with local codes and industry accepted wiring practices.

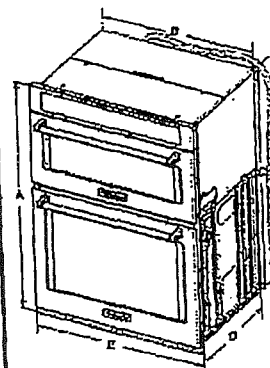
For power requirements, refer to the following table.

Model	Voltage	Amperage R11*	Amperage (L2)*	Rating (R3)
KOCE507E/KOCE500E	120/240	32	30	5000
KOCE507E/KOCE500E	120/208	30	28	3600

*Amperage values noted above are for information purposes only; the units are rated in watts.

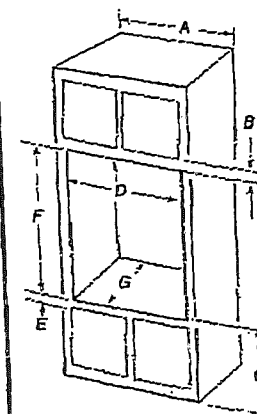
KitchenAid Corporation includes a standard guarantee to insure our products, we reserve the right to change terms and specifications without notice.

PRODUCT DIMENSIONS



- 27" (68.6 cm) models
A. 22 1/2" (57.1 cm) overall height
B. 25 1/4" (64.1 cm) recessed width
C. 4 1/2" (11.4 cm) recessed depth
D. 23 1/4" (59.1 cm) max. recessed depth
E. 27" (68.6 cm) overall width
F. 4 1/2" (11.4 cm) overall depth (measured from the conduit clamp located at the rear of the oven. Do not remove the conduit clamp.)
- 30" (76.2 cm) models
A. 22 1/2" (57.1 cm) overall height
B. 28 1/4" (71.9 cm) recessed width
C. 4 1/2" (11.4 cm) recessed depth
D. 23 1/4" (59.1 cm) max. recessed depth
E. 30" (76.2 cm) overall width
F. 4 1/2" (11.4 cm) overall depth (measured from the conduit clamp located at the rear of the oven. Do not remove the conduit clamp.)

Cabinet Dimensions



- 27" (68.6 cm) models
A. 27" (68.6 cm) min. cabinet width
B. 1" (2.5 cm) top of cabinet to bottom of upper cabinet door
C. 21 1/4" (54.3 cm) bottom of cabinet to floor is recommended. 2" (5.1 cm) to floor is acceptable.
D. 25 1/4" (64.1 cm) min. cabinet width
E. 1 1/2" (3.8 cm) min. bottom of cabinet to top of cabinet door
F. 4 1/2" (11.4 cm) recommended cabinet height
G. 24" (60.7 cm) cabinet depth
30" (76.2 cm) models
A. 30" (76.2 cm) min. cabinet width
B. 1" (2.5 cm) top of cabinet to bottom of upper cabinet door
C. 21 1/4" (54.3 cm) bottom of cabinet to floor is recommended. 2" (5.1 cm) to floor is acceptable.
D. 28 1/4" (71.9 cm) min. cabinet width
E. 1 1/2" (3.8 cm) min. bottom of cabinet to top of cabinet door
F. 4 1/2" (11.4 cm) recommended cabinet height
G. 24" (60.7 cm) cabinet depth

*NOTE: The cabinet height can be between 41" (104.1 cm) and 41 1/2" (105.8 cm) for microwave/oven combination.

SEP 18 2017

CW
Lot 28

See next pages
more clean specs

LOT 28 CW

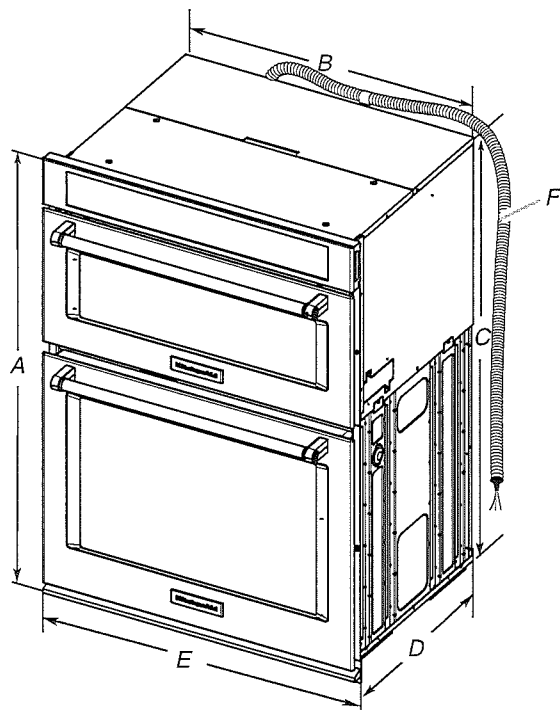
30" Electric Built-in Microwave / Oven Combination

- Electrical supply junction box should be located 3" (7.6 cm) maximum below the support surface when the oven is installed in a wall cabinet. A 1" (2.5 cm) minimum diameter hole should have been drilled in the left rear corner of the support surface to pass the appliance cable through to the junction box.
- Oven support surface must be solid, level and flush with bottom of cabinet cutout. Floor must be able to support a total weight (microwave and built-in oven) of 208 lbs (95 kg) for 27" (68.6 cm) models or 249 lbs (113 kg) for 30" (76.2 cm) models.

IMPORTANT: To avoid damage to your cabinets, check with your builder or cabinet supplier to make sure that the materials used will not discolor, delaminate or sustain other damage. This oven has been designed in accordance with the requirements of UL and CSA International and complies with the maximum allowable wood cabinet temperatures of 194°F (90°C).

Product Dimensions

27" and 30" (68.6 cm and 76.2 cm) Ovens



27" (68.6 cm) models

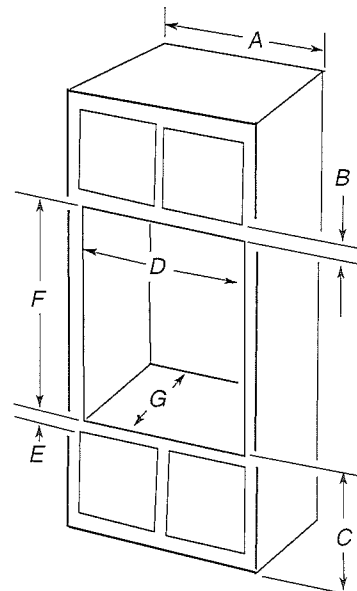
- A. 42 $\frac{5}{8}$ " (108.0 cm) overall height
- B. 25 $\frac{5}{8}$ " (64.6 cm) recessed width
- C. 41" (104.1 cm) recessed height
- D. 23 $\frac{1}{4}$ " (59.1 cm) max. recessed depth
- E. 27" (68.6 cm) overall width
- F. 48" (121.9 cm) flexible conduit length measured from the conduit clamp located at the rear of the oven. Do not remove the conduit clamp.

30" (76.2 cm) models

- A. 42 $\frac{5}{8}$ " (108.0 cm) overall height
- B. 28 $\frac{7}{8}$ " (72.2 cm) recessed width
- C. 41" (104.1 cm) recessed height
- D. 23 $\frac{1}{4}$ " (59.1 cm) max. recessed depth
- E. 30" (76.2 cm) overall width
- F. 48" (121.9 cm) flexible conduit length measured from the conduit clamp located at the rear of the oven. Do not remove the conduit clamp.

Cabinet Dimensions

27" and 30" (68.6 cm and 76.2 cm) Ovens



27" (68.6 cm) models

- A. 27" (68.6 cm) min. cabinet width
- B. 1" (2.5 cm) top of cutout to bottom of upper cabinet door
- C. 19 $\frac{1}{4}$ " (48.9 cm) bottom of cutout to floor is recommended. 4"-19 $\frac{1}{4}$ " (10.2-48.9 cm) bottom of cutout to floor is acceptable.
- D. 25 $\frac{1}{2}$ " (64.8 cm) cutout width
- E. 1 $\frac{1}{2}$ " (3.8 cm) min. bottom of cutout to top of cabinet door
- F. 41 $\frac{5}{8}$ " (105 cm)* recommended cutout height
- G. 24" (60.7 cm) cutout depth

30" (76.2 cm) models

- A. 30" (76.2 cm) min. cabinet width
- B. 1" (2.5 cm) top of cutout to bottom of upper cabinet door
- C. 19 $\frac{1}{4}$ " (48.9 cm) bottom of cutout to floor is recommended. 4"-19 $\frac{1}{4}$ " (10.2-48.9 cm) bottom of cutout to floor is acceptable.
- D. 28 $\frac{1}{2}$ " (72.4 cm) cutout width
- E. 1 $\frac{1}{2}$ " (3.8 cm) min. bottom of cutout to top of cabinet door
- F. 41 $\frac{5}{8}$ " (105 cm)* recommended cutout height
- G. 24" (60.7 cm) cutout depth

***NOTE:** The cutout height can be between 41" and 41 $\frac{1}{2}$ " (104.1 cm and 105.6 cm) for microwave/oven combination.

Electrical Requirements

If codes permit and a separate ground wire is used, it is recommended that a qualified electrical installer determine that the ground path and wire gauge are in accordance with local codes.

Check with a qualified electrical installer if you are not sure the oven is properly grounded.

This oven must be connected to a grounded metal, permanent wiring system.

Be sure that the electrical connection and wire size are adequate and in conformance with the National Electrical Code, ANSI/NFPA 70-latest edition or CSA Standards C22.1-94, Canadian Electrical Code, Part 1 and C22.2 No. O-M91-latest edition, and all local codes and ordinances.

A copy of the above code standards can be obtained from:

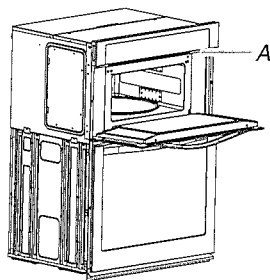
National Fire Protection Association
1 Batterymarch Park
Quincy, MA 02169-7471

CSA International
8501 East Pleasant Valley Road
Cleveland, OH 44131-5575

Electrical Connection

To properly install your oven, you must determine the type of electrical connection you will be using and follow the instructions provided for it here.

- Oven must be connected to the proper electrical voltage, amperage, and frequency as specified on the model/serial/ rating plate. See the following illustration.



A. Model/serial/rating plate

- Models rated from 7.3 to 9.6 kW at 240 volts (5.4 to 7.4 kW at 208 volts) require a separate 40-amp circuit. Models rated at 4.8 kW and below at 240 volts (3.6 kW and below at 208 volts) require a separate 30-amp circuit.
- A circuit breaker is recommended.
- Connect directly to the fused disconnect (or circuit breaker box) through flexible, armored or nonmetallic sheathed, copper cable (with grounding wire). See “Make Electrical Connection” section.

- Flexible conduit from the oven should be connected directly to the junction box.
- Do not cut the conduit. The length of conduit provided is for serviceability of the oven.
- A UL listed or CSA approved conduit connector must be provided.
- If the house has aluminum wiring, follow the procedure below:

1. Connect a section of solid copper wire to the ends of the flexible conduit leads.
2. Connect the aluminum wiring to the added section of copper wire using special connectors and/or tools designed and UL listed for joining copper to aluminum.

Follow the electrical connector manufacturer's recommended procedure. Aluminum/copper connection must conform with local codes and industry accepted wiring practices.

For power requirements, refer to the following table.

Model	Voltage	Amperage (L1)*	Amperage (L2)*	Rating (W)
KOCE507E/ KOCE500E	120/240	32	30	8000
KOCE507E/ KOCE500E	120/208	30	28	6600

*Amperage values noted above are for information purposes only: The units are rated in watts.

INSTALLATION INSTRUCTIONS

Prepare Built-In Microwave/Oven Combination

1. Decide on the final location for the oven. Locate existing wiring to avoid drilling into or severing wiring during installation.

⚠ WARNING

Excessive Weight Hazard

Use two or more people to move and install oven.

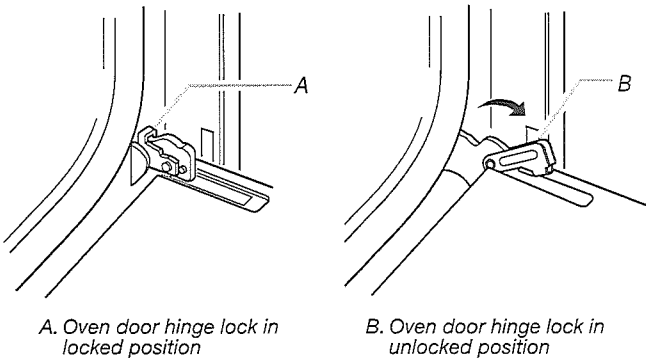
Failure to do so can result in back or other injury.

2. To avoid floor damage, set the oven onto cardboard prior to installation. Do not use handle or any portion of the front frame for lifting.
3. Remember to remove bottom vent from the foam packing on top of oven.
4. Remove the shipping materials and tape from the oven.
5. Remove the hardware package from inside the bag containing literature.
6. Remove and set aside racks and other parts from inside the oven.
7. Move oven and cardboard close to the oven's final location.

Remove Oven Door(s)

IMPORTANT: Use two hands to remove oven door.

1. Prior to removing the oven door, prepare a surface where you will place it. This surface should be flat and covered with a soft blanket, or use the corner posts from your packaging material.
2. Open the oven door.
3. Locate the oven door hinge locks in both corners of the oven door, and then rotate the hinge locks toward the oven door to the unlocked position. If the door hinge lock is not rotated fully (see illustration B), the door will not remove properly.



A. Oven door hinge lock in locked position

B. Oven door hinge lock in unlocked position