

27" (68.6 CM) AND 30" (76.2 CM) **ELECTRIC SINGLE AND DOUBLE BUILT-IN OVEN**

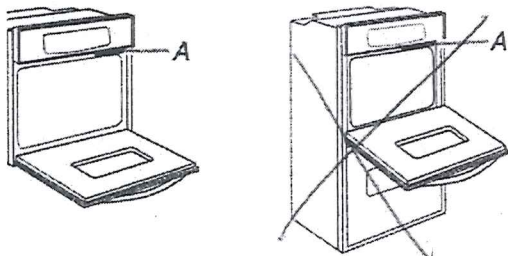
UCT MODEL SERIES

1EC0A	WOD93EC7A	WOS92EC0A
1EC7A	WOS51EC0A	WOS92EC7A
3EC0A	WOS51EC7A	

cal:

erly install your oven, you must determine the type of al connection you will be using and follow the instructions d for it here.

must be connected to the proper electrical voltage and ncy as specified on the model/serial number rating plate. odel/serial number rating plate is located under the l panel on single ovens and under the control panel on per oven cavity on double ovens. See the following ations.



Single Oven

odel/serial number plate A. Model/serial number plate is rated from 7.3 to 9 kW at 240 volts (5.4 to 7.4 kW at olts) require a separate 40-amp circuit. Models rated at V and below at 240 volts (3.6 kW and below at 208 volts) e a separate 20-amp circuit.

uit breaker is recommended.

ect directly to the circuit breaker box (or fused disconnect) gh flexible, armored or nonmetallic sheathed, copper cable grounding wire). See "Make Electrical Connection" n.

le conduit from the oven should be connected directly to nction box.

both sides of the line.

it cut the conduit. The length of conduit provided is for eability of the oven.

listed or CSA approved conduit connector must be led.

house has aluminum wiring, follow the procedure below: nect a section of solid copper wire to the ends of the ible conduit leads.

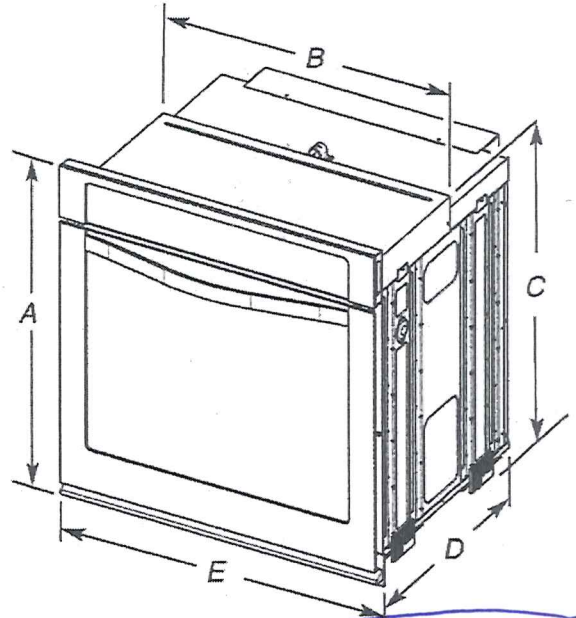
nect the aluminum wiring to the added section of per wire using special connectors and/or tools igned and UL listed for joining copper to aluminum.

v the electrical connector manufacturer's recommended ure. Aluminum/copper connection must conform with codes and industry accepted wiring practices.

ver requirements for models WOS51EC7A, WOS51EC0A, EC7A, WOD51EC0A, WOS92EC7A, WOS92EC0A, EC7A, and WOD93EC0A, refer to the following table.

	Single Thermal	Single Convect	Double Thermal	Double Convect
C 3690 W	3720 W	7370 W	7400 W	
C 2790 W	2820 W	5580 W	5610 W	
C 15.4 A	15.5 A	30.7 A	30.8 A	
C 13.4 A	13.6 A	26.8 A	27.0 A	

PRODUCT DIMENSIONS

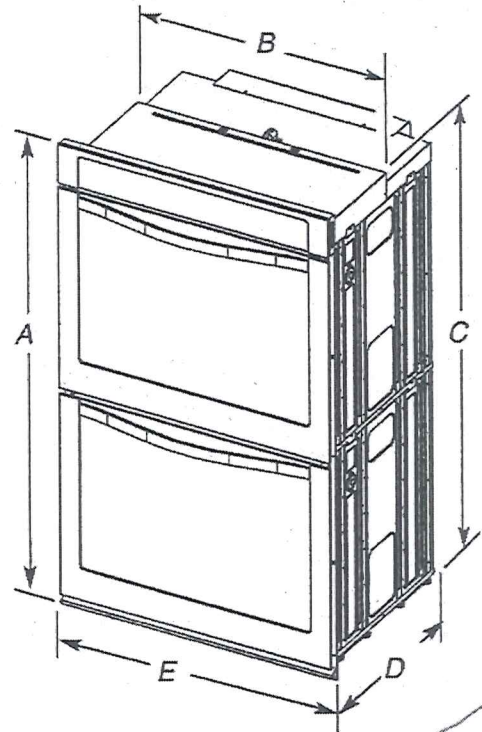


27" (68.6 cm) models

A. 28 3/4" (72.8 cm) max. overall height
 B. 25 1/8" (64.6 cm) max. recessed width
 C. 26 3/4" (67.9 cm) recessed height
 D. 23 1/4" (59.1 cm) max. recessed depth
 E. 27" (68.6 cm) overall width

30" (76.2 cm) models

A. 28 3/4" (72.8 cm) max. overall height
 B. 28 1/2" (72.4 cm) max. recessed width
 C. 26 3/4" (67.9 cm) recessed height
 D. 23 1/4" (59.1 cm) max. recessed depth
 E. 30" (76.2 cm) overall width



27" (68.6 cm) models

A. 51 1/8" (130.0 cm) max. overall height
 B. 25 1/8" (64.6 cm) max. recessed width
 C. 48 1/8" (124.0 cm) recessed height
 D. 23 1/4" (59.1 cm) max. recessed depth
 E. 27" (68.6 cm) overall width

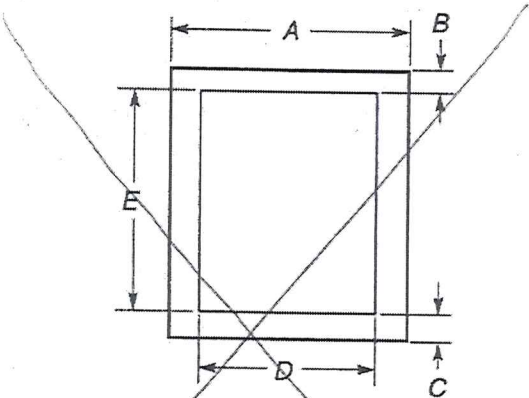
30" (76.2 cm) models

A. 51 1/8" (130.0 cm) max. overall height
 B. 28 1/2" (72.4 cm) max. recessed width
 C. 48 1/8" (124.0 cm) recessed height
 D. 23 1/4" (59.1 cm) max. recessed depth
 E. 30" (76.2 cm) overall width

Lot 144 Ph 2
 Bowmanville

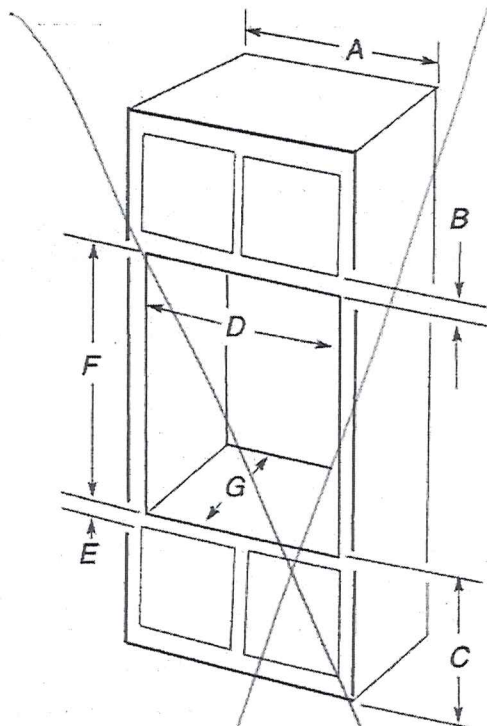
NET OPENING DIMENSIONS

3.6 cm) and 30" (76.2 cm) Single Oven Undercounter cut cooktop installed above)



- 27" (68.6 cm) min. cabinet width on 27" (68.6 cm) models
- 30" (76.2 cm) min. cabinet width on 30" (76.2 cm) models
- 1 1/2" (3.8 cm) min. top of cutout to underside of countertop
- 5 1/4" (13.3 cm) bottom of cutout to floor
- 25 1/2" (64.8 cm) cutout width
- 28 1/2" (72.4 cm) cutout width
- 28" (71.2 cm) min. cutout height

Single Ovens Installed in Cabinet

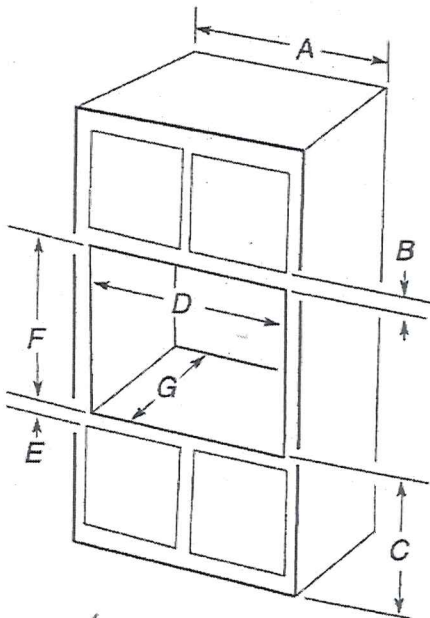


- 27" (68.6 cm) min. cabinet width
- 1" (2.5 cm) top of cutout to bottom of upper cabinet door
- 32" (81.3 cm) bottom of cutout to floor
- 25 1/2" (64.8 cm) cutout width
- 1 1/2" (3.8 cm) min. bottom of cutout to top of cabinet door
- 28" (71.2 cm)* recommended cutout height
- 24" (60.7 cm) cutout depth

- 30" (76.2 cm) min. cabinet width
- 1" (2.5 cm) top of cutout to bottom of upper cabinet door
- 14 3/4" (37.5 cm) bottom of cutout to floor is recommended. 4"-14 3/4" (10.2-37.5 cm) bottom of cutout to floor is acceptable.
- 28 1/2" (72.4 cm) cutout width
- 1 1/2" (3.8 cm) min. bottom of cutout to top of cabinet door
- 50 3/4" (127.6 cm)* recommended cutout height
- 24" (60.7 cm) cutout depth

The cutout height can be between 48 7/8" (124.1 cm) and 132.6 cm) for double ovens.

Single Ovens Installed in Cabinet



27" (68.6 cm) models

- 27" (68.6 cm) min. cabinet width
- 1" (2.5 cm) top of cutout to bottom of upper cabinet door
- 32" (81.3 cm) bottom of cutout to floor
- 25 1/2" (64.8 cm) cutout width
- 1 1/2" (3.8 cm) min. bottom of cutout to top of cabinet door
- 28" (71.2 cm)* recommended cutout height
- 24" (60.7 cm) cutout depth

30" (76.2 cm) models

- 30" (76.2 cm) min. cabinet width
- 1" (2.5 cm) top of cutout to bottom of upper cabinet door
- 32" (81.3 cm) bottom of cutout to floor
- 28 1/2" (72.4 cm) cutout width
- 1 1/2" (3.8 cm) min. bottom of cutout to top of cabinet door
- 28" (71.2 cm)* recommended cutout height
- 24" (60.7 cm) cutout depth

NOTE: The cutout height can be between 26 15/16" (68.4 cm) and 29 7/16" (74.8 cm) for single ovens.

Lot 144 Ph 2
Bowmanville