



CONSTRUCTION SUMMARY

23N - 3 - The Barossa 19 (S38-19) Elev C

Extras at Time of Sale

Note:

CEILINGS

Inv.680 1 - CEILINGS - SMOOTH CEILINGS THROUGHOUT MAIN FLOOR ONLY

Line8243 Note:

9Dec21 / 10Mar22

CONSTRUCTION - STRUCTURAL CHANGES

Inv.680 1 - INTERIOR RAIL UPG 2 - WROUGHT IRON

Line8248 Note:

9Dec21 / 10Mar22

Inv.680 1 - PLEASE ADD WALL ON GLASS SHOWER IN SHARED ENSUITE AS PER SKETCH. PLEASE ADD DOOR IN SHARED ENSUITE AS PER SKETCH. INCLUDES REGULAR DOOR.

Line8241 Note:

9Dec21 / 10Mar22

PAINT AND STAIN

Inv.680 1 - PAINT AND STAIN - WROUGHT IRON STAIRCASE - STAIN STAIRCASE TO MATCH

Line8247 Note:

9Dec21 / 10Mar22

WINDOWS - BASEMENT

Inv.680 4 - BASEMENT WINDOW - 30 X 24

Line8250 Note:

9Dec21 / 10Mar22

Inv.680 2 - BASEMENT WINDOW - WINDOW WELL

Line8251 Note:

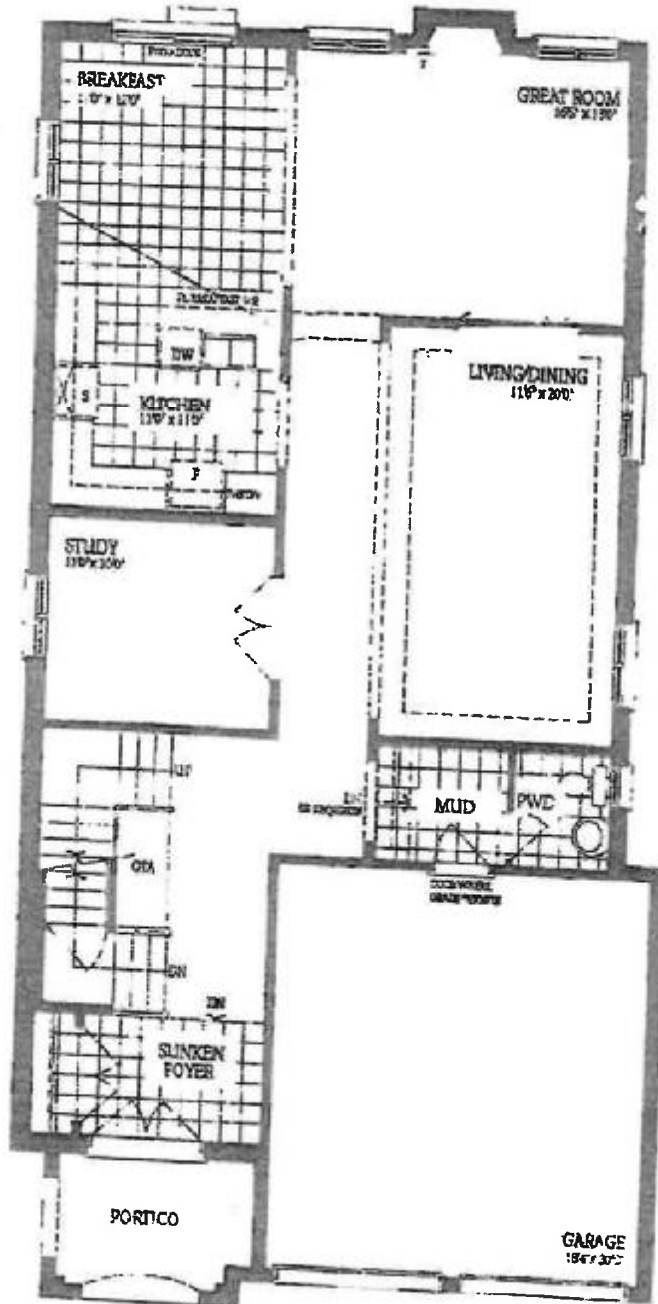
9Dec21 / 10Mar22

The Barossa 19

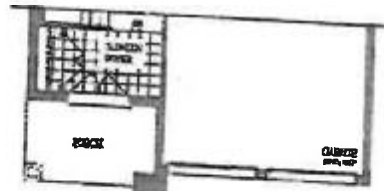
ELEVATION A - 3134 SQ.FT.

ELEVATION B - 3144 SQ.FT.

ELEVATION C - 3134 SQ.FT.



Ground Floor
Elevation A



Ground Floor
Elevation C

Lot 23
Elev C

DS
KD

DS
DS

The Barossa 19 (S38-19) Elev C

The Barossa 19

ELEVATION A - 3134 SQ.FT.

ELEVATION B - 3144 SQ.FT.

ELEVATION C - 3134 SQ.FT.



Second Floor
Elevation A

lot 23

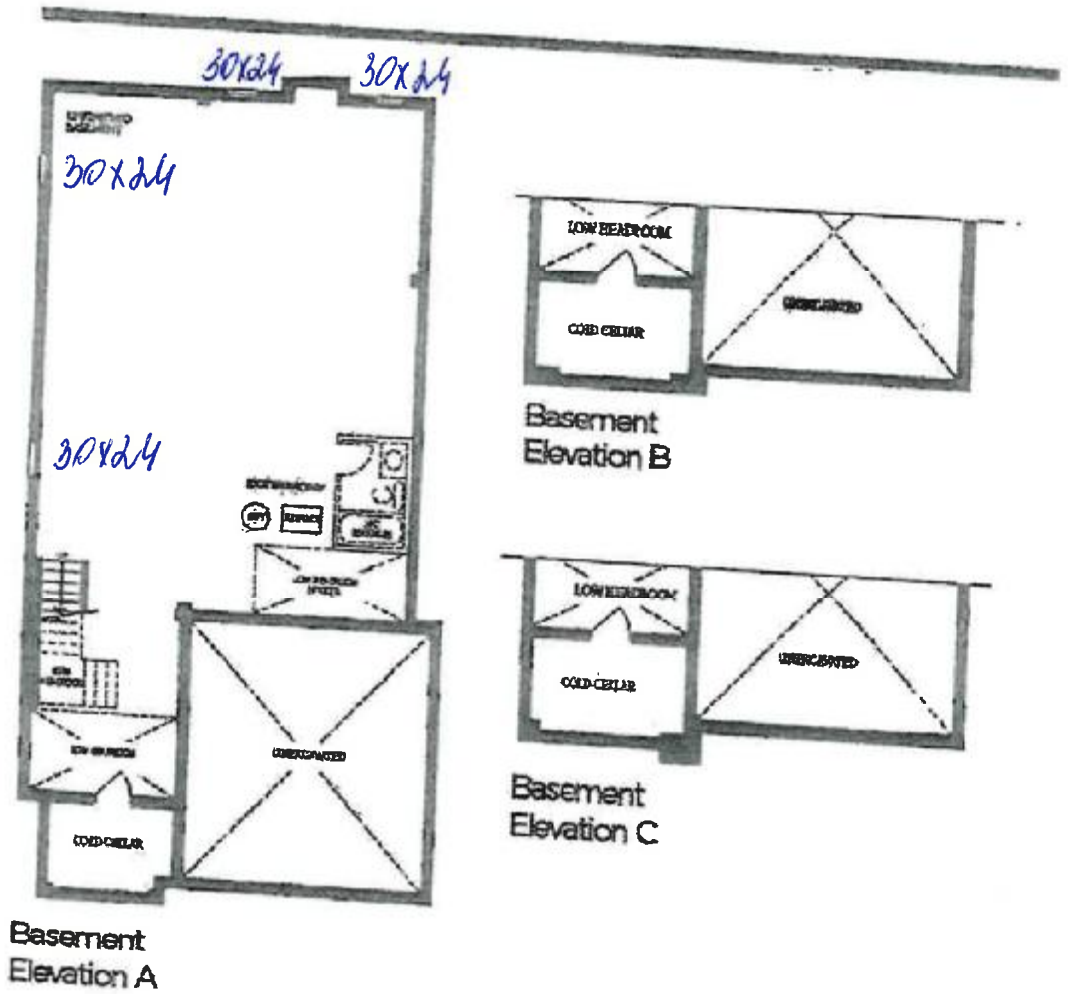


Second Floor
Elevation C

The Barossa 19 (S38-19) Elev C

The Barossa 19

ELEVATION A - 3134 SQ.FT.
ELEVATION B - 3144 SQ.FT.
ELEVATION C - 3134 SQ.FT.



DS
KD

DS
DS