



CONSTRUCTION SUMMARY

10 - 2 - The Golden Eye 2 (S48-2) Elev B

Extras at Time of Sale

Note:

CABINETRY

Inv.713	1 - CABINETRY - KITCHEN - UPGRADE 4
Line6659	Note:
14Dec21 / 24Jan22	
Inv.713	1 - ADJUST CABINETRY TO ACCOMMODATE A 36" STAND ALONE STOVE (UPGRADE 4)
Line7137	Note: CENTRE STOVE TO ALIGN WITH THE ISLAND.
14Dec21 / 24Jan22	
Inv.713	1 - IN LIEU OF UPPER CABINETS ABOVE STOVE SUPPLY AND INSTALL 2 PANELS. (UPG 4)
Line7173	Note:
14Dec21 / 24Jan22	

CABINETRY - ACCESSORIES

Inv.713	1 - BASE DRAWER STYLE MICROWAVE CABINET - UPGRADE 4
Line7134	Note: PLEASE SEE SKETCH FOR LOCATION OF MICROWAVE CABINET. MICROWAVE 26" WIDE, 15" TALL, 20" DEEP.
14Dec21 / 24Jan22	
Inv.713	1 - DEEP FRIDGE UPPER WITH GABLES - UPGRADE 4
Line7136	Note:
14Dec21 / 24Jan22	

CABINETRY - VANITY CABINETS

Inv.713	1 - CABINETRY - ENSUITE - UPGRADE 2
Line6655	Note:
14Dec21 / 24Jan22	

CONSTRUCTION

Inv.713	1 - SHOWER NICHE 24" WIDE BY 14" TALL
Line6657	Note:
14Dec21 / 24Jan22	

CONSTRUCTION - STRUCTURAL CHANGES*

Inv.713	1 - 9 FOOT CEILINGS IN BASEMENT
Line6647	Note:
14Dec21 / 24Jan22	

CONSTRUCTION - STRUCTURAL CHANGES

COUNTER TOP - GRANITE

Inv.713	1 - COUNTER TOP - GRANITE - ENSUITE -STANDARD COLOUR
Line6650	Note:
14Dec21 / 24Jan22	
Inv.713	1 - COUNTER TOP - GRANITE - ISLAND INCLUDING BREAKFAST BAR - STANDARD COLOUR
Line6651	Note:
14Dec21 / 24Jan22	



CONSTRUCTION SUMMARY

10 - 2 - The Golden Eye 2 (S48-2) Elev B

Inv.713	1 - COUNTER TOP - GRANITE - KITCHEN - STANDARD COLOUR
Line6652	Note:
14Dec21 / 24Jan22	

DO NOT INSTALL

Inv.713	1 - DO NOT INSTALL CERAMIC ACCESSORIES (TOWEL BAR, PAPER HOLDER, SOAP DISH)
Line6661	Note:
14Dec21 / 24Jan22	

ELECTRICAL

Inv.713	1 - ELECTRICAL - SUPPLY AND INSTALL PLUG ON SEPARATE CIRCUIT (FOR BEVERAGE FRIDGE)
Line7132	Note: PLEASE SEE SKETCH FOR LOCATION OF BEVERAGE FRIDGE
14Dec21 / 24Jan22	

Inv.713	1 - ELECTRICAL - SUPPLY AND INSTALL PLUG ON SEPARATE CIRCUIT (FOR MICROWAVE)
Line7133	Note: PLEASE SEE SKETCH FOR LOCATION OF MICROWAVE
14Dec21 / 24Jan22	

HARDWOOD FLOORING

Inv.713	1 - HARDWOOD FLOORING - STANDARD - MASTER BEDROOM
Line6648	Note:
14Dec21 / 24Jan22	

Inv.713	1 - HARDWOOD FLOORING - STANDARD - UPPER HALL
Line6649	Note:
14Dec21 / 24Jan22	

Inv.713	1 - HARDWOOD FLOORING - STANDARD - LANDING AT STAIRS UP
Line6656	Note:
14Dec21 / 24Jan22	

HEATING AND AIR CONDITIONING

Inv.713	1 - UPGRADE TO 10" KITCHEN EXHAUST
Line6664	Note: TO ACCOMMODATE 42" HOOD EXHAUST FAN
14Dec21 / 24Jan22	

INTERIOR RAILING

Inv.713	1 - UPGRADE RAILING - UPGRADE 1 - WROUGHT IRON
Line7070	Note:
14Dec21 / 24Jan22	

PLUMBING

SINK

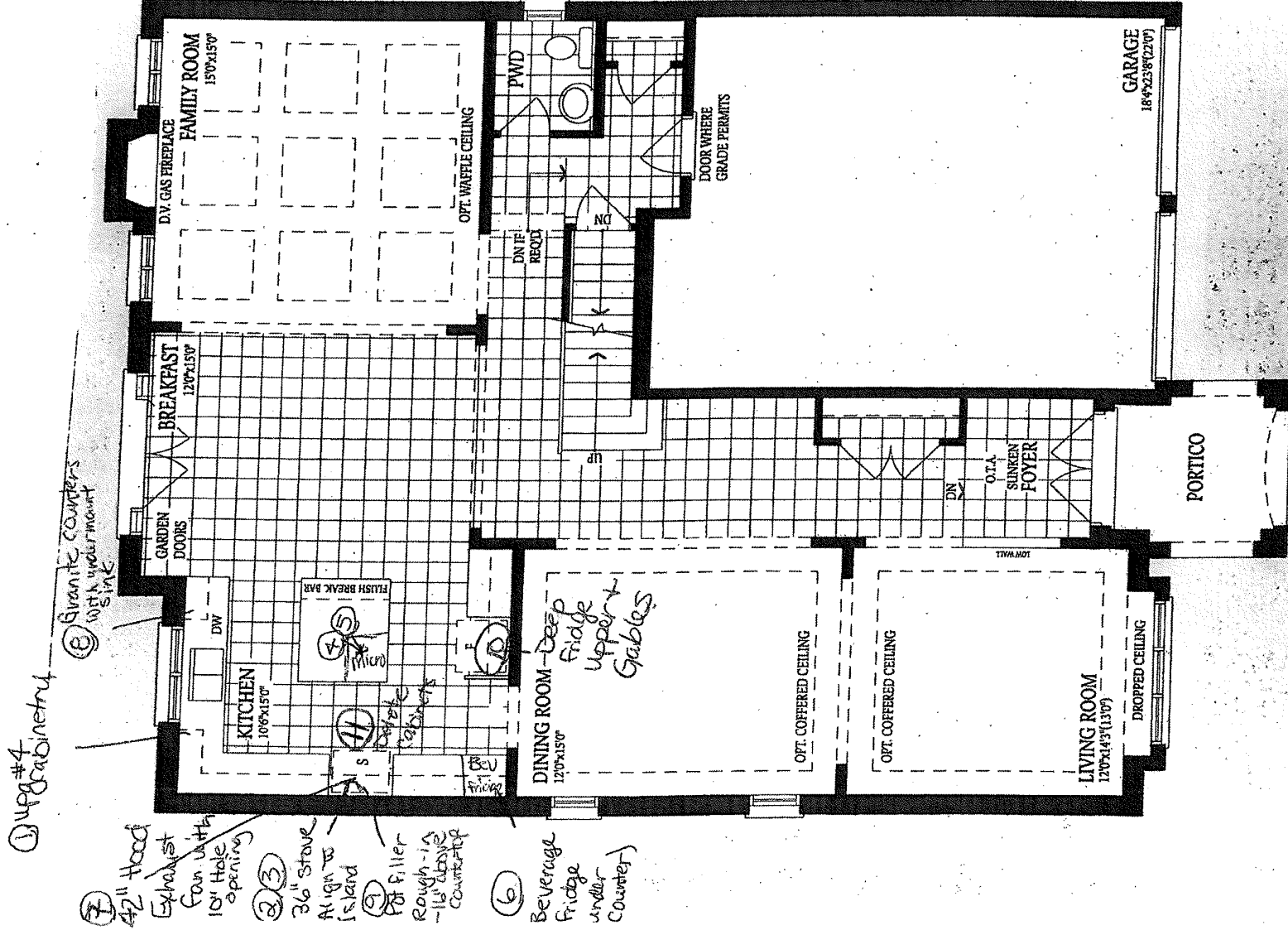
Inv.713	1 - SINK - SUPPLY AND INSTALL UNDERMOUNT SOUTHPORT KITCHEN SINK IN LIEU OF STANDARD KITCHEN SINK
Line6653	Note:
14Dec21 / 24Jan22	



CONSTRUCTION SUMMARY

10 - 2 - The Golden Eye 2 (S48-2) Elev B

Inv.713	2 - SINK - SUPPLY AND INSTALL UNDERMOUNT OVAL PORCELAIN VANITY SINK IN LIEU OF STANDARD VAINITY SINK - MASTER ENSUITE
Line6654	Note:
14Dec21 / 24Jan22	



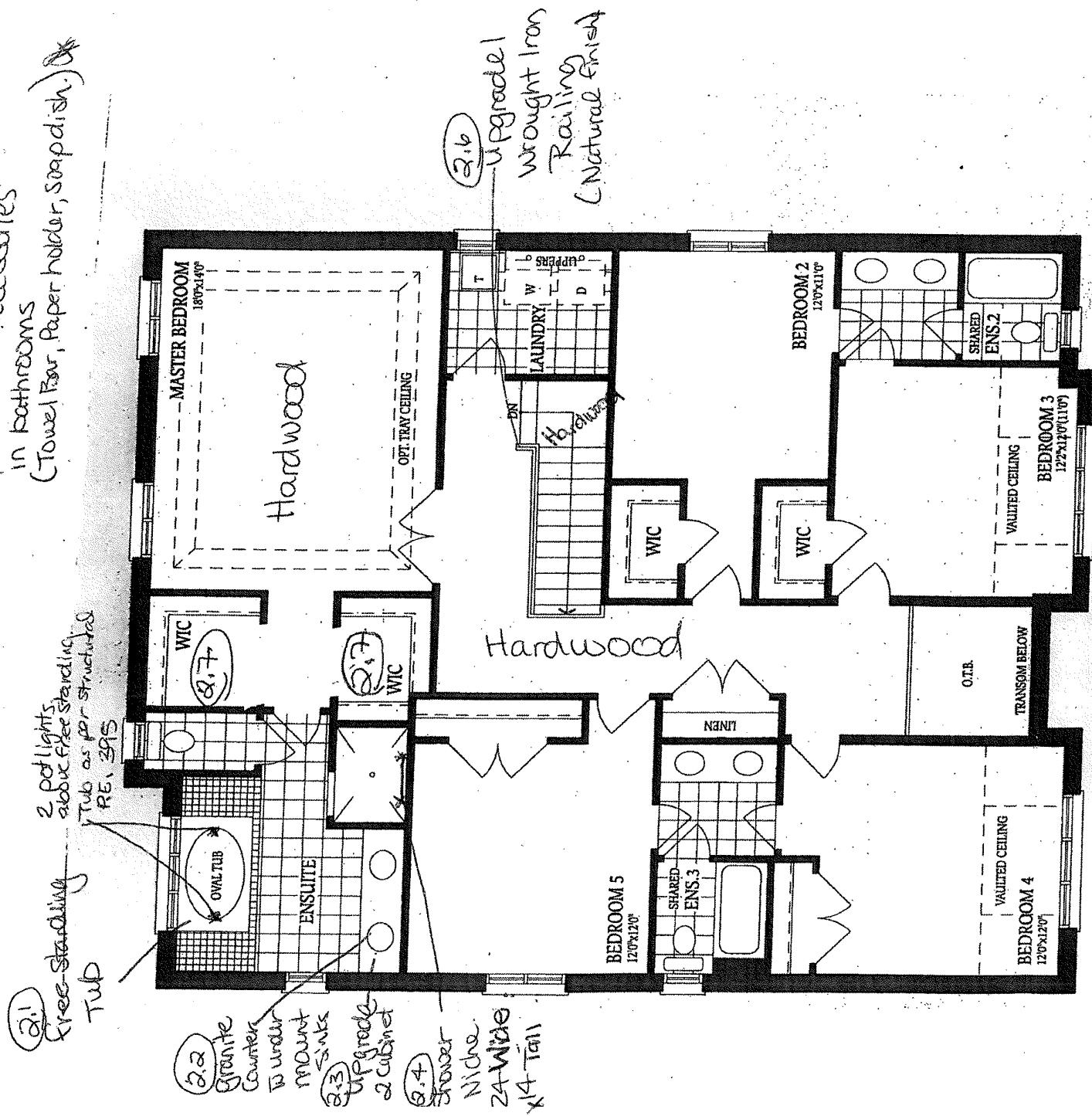
GROUND FLOOR
ELEVATION A

- ① Upgrade #4 Cabinetry
- ② Adjust opening for 36" stove.
- ③ Align stove with island
- ④ Base Drawer style Microwave Cabinet
- ⑤ Electrical for microwave.
- ⑥ Beverage fridge + Electrical
- ⑦ 42" Hood Exhaust fan with 10" Hole opening
- ⑧ Granite counter in Kitchen with undermount sink
- ⑨ Rough-in Pot filler installed above stove (16" above countertop)
- ⑩ Deep Fridge uppers + Gable.
- ⑪ Delete cabinets above stove + install 2 panels



LOT 10
Goldeneye 2
Elev. B

* Do not install Ceramic Accessories in Bathrooms (Towel Bar, Paper holder, Soapdish.)



SECOND FLOOR ELEVATION A

- 2.1 Free standing tub
- 2.2 Granite Counter w/ undermount sink
- 2.3 Upgrade 2 Cabinetry Shower Niche
- 2.4 2 potlights above free-standing tub
- 2.5 Upgrade 1 Wrought Iron Railing (Natural finish)
- 2.7 Remove walls with closet doors hardware to hang clothes to remain (P.E. 395 structural)

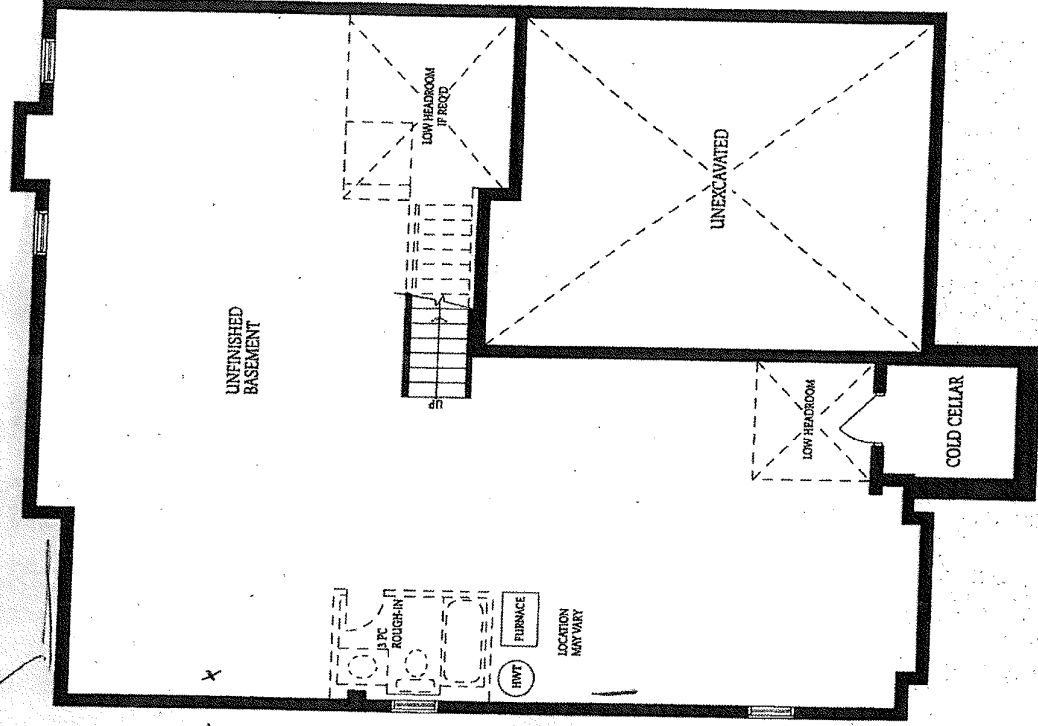


LOT 10
Goldeneye 2
Elev. B

Add window
48x60

gas line
Basement

Rough-in
Laundry



BASEMENT ELEVATION A



LOT 10
GoldenEye 2
Elev. B