



CONSTRUCTION SUMMARY

66N Right - 2 - The Sonoma 4 Corner (SD25-4) Elev A

Extras at Time of Sale

Note:

CONSTRUCTION

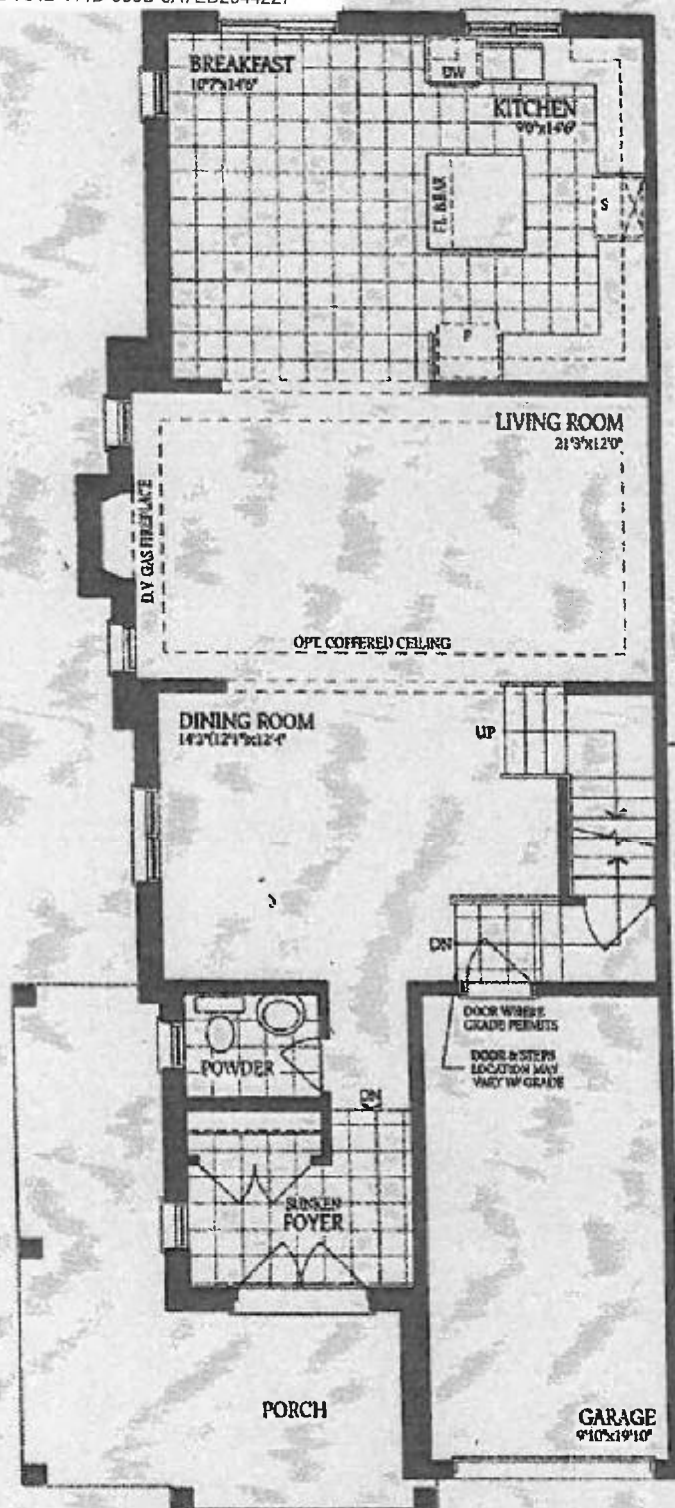
Inv.270	1 - OPTIONAL SECOND FLOOR CORNER UNIT WITH ALTERNATE ENSUITE
Line2570	Note:
19May21 / 26May21	

INTERIOR RAILING

Inv.270	1 - INTERIOR RAILING - UPGRADE 1 - WROUGHT IRON
Line2571	Note:
19May21 / 26May21	

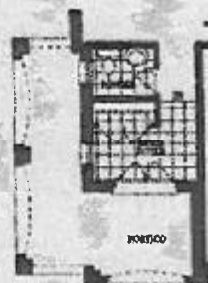
PAINT AND STAIN

Inv.270	1 - PAINT AND STAIN - WROUGHT IRON STAIRCASE - STAIN STAIRCASE TO MATCH
Line2572	Note:
19May21 / 26May21	



upgrade /
wrought iron
(stain to match)

Ground Floor
Corner Unit
Elevation A



Ground Floor
Corner Unit
Elevation B

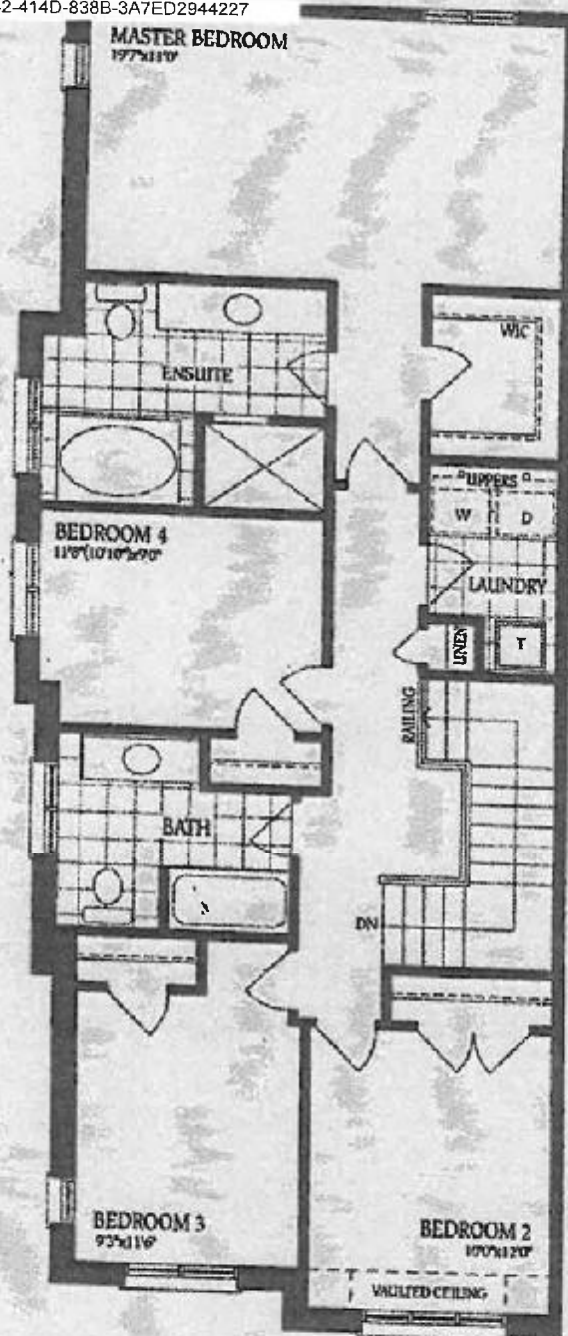


Ground Floor
Corner Unit
Elevation C

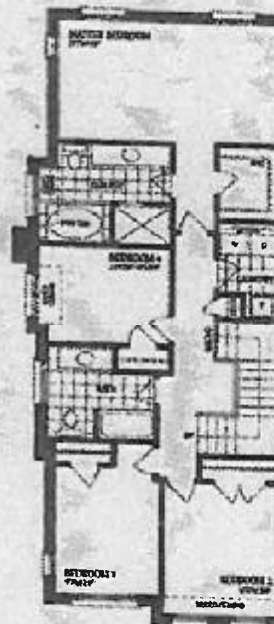
The Sonoma 4 CORNER

ELEVATION A - 2248 SQ.FT.
ELEVATION B - 2248 SQ.FT.
ELEVATION C - 2270 SQ.FT.

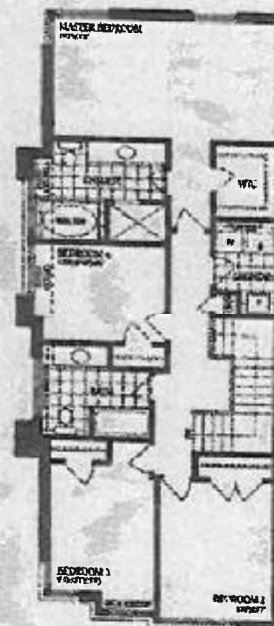
100 Right



Second Floor
Corner Unit
Elevation A



Second Floor
Corner Unit
Elevation B



Second Floor
Corner Unit
Elevation C

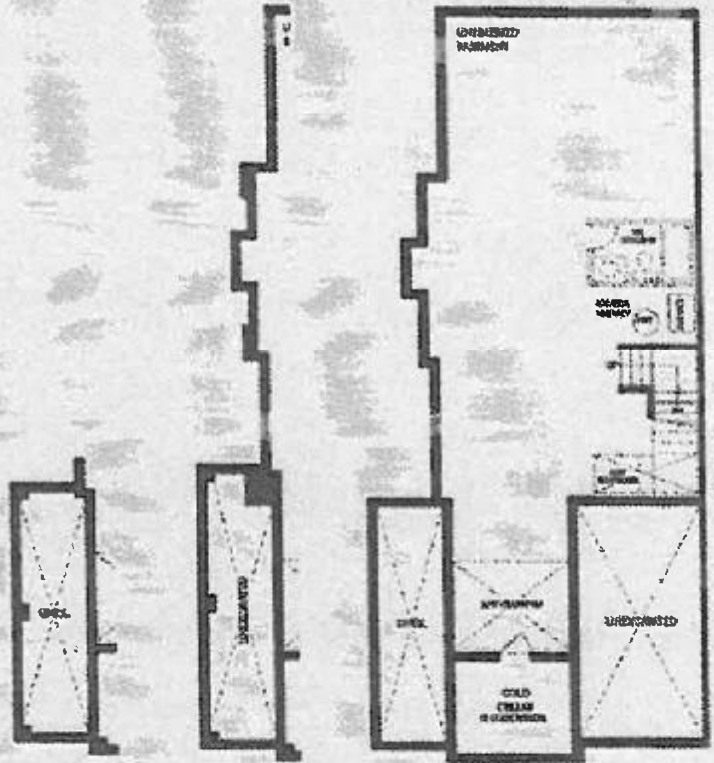
The **Sonoma 4 CORNER**
ELEVATION A - 2248 SQ.FT.
ELEVATION B - 2248 SQ.FT.
ELEVATION C - 2270 SQ.FT.

Lot 66R

The Sonoma 4 CORNER

ELEVATION A - 2248 SQ.FT.
ELEVATION B - 2248 SQ.FT.
ELEVATION C - 2270 SQ.FT.

66 Right



Basement
Corner Unit
Elevation B

Basement
Corner Unit
Elevation C

Basement - Corner Unit
Elevation A

[Handwritten signature]