



CONSTRUCTION SUMMARY

69N Left - 2 - The Sonoma 4 Corner (SD25-4) Elev C

Extras at Time of Sale

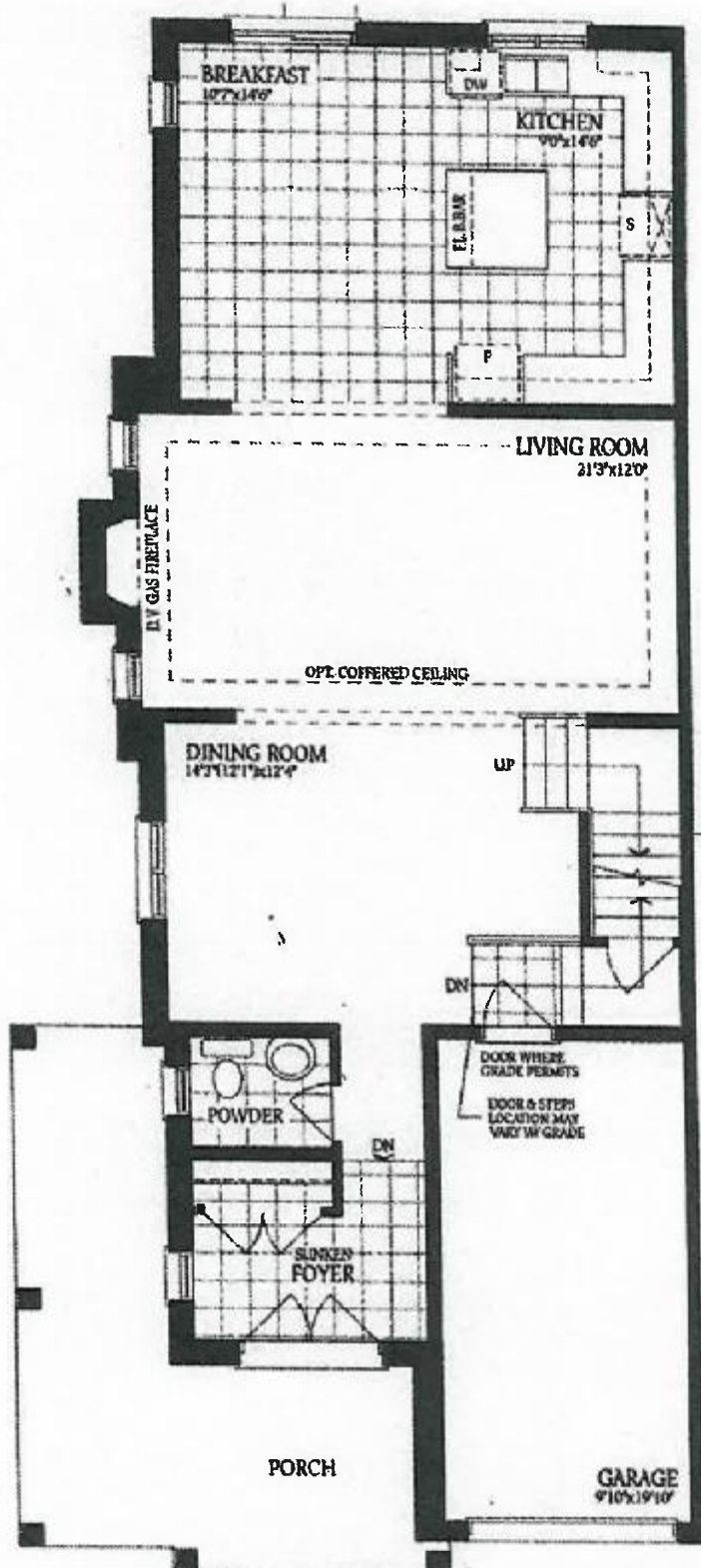
Note:
-------

INTERIOR RAILING

Inv.272	1 - INTERIOR RAILING - UPGRADE 1 - WROUGHT IRON
Line2576	Note:
20May21 / 20May21	

PAINT AND STAIN

Inv.272	1 - PAINT AND STAIN - WROUGHT IRON STAIRCASE - STAIN STAIRCASE TO MATCH
Line2577	Note:
20May21 / 20May21	



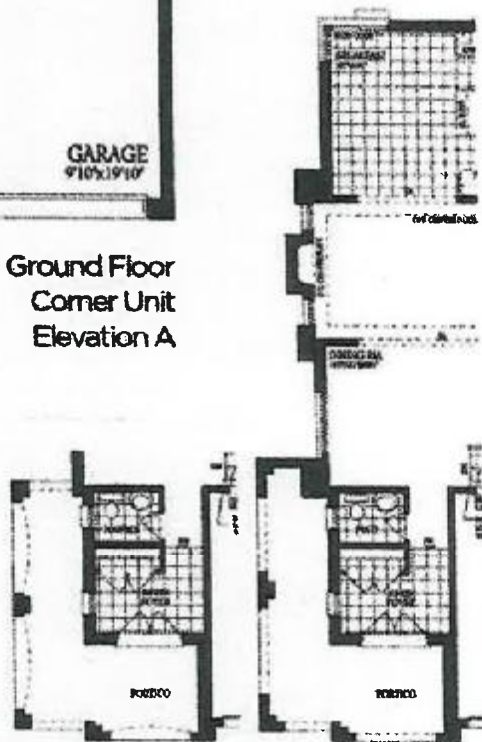
69L  
Sonoma 4-C

Upgrade 1  
Wrought iron staircase  
stairs to match

Ground Floor  
Corner Unit  
Elevation A

# The Sonoma 4 CORNER

ELEVATION A - 2248 SQ.FT.  
ELEVATION B - 2248 SQ.FT.  
ELEVATION C - 2270 SQ.FT.

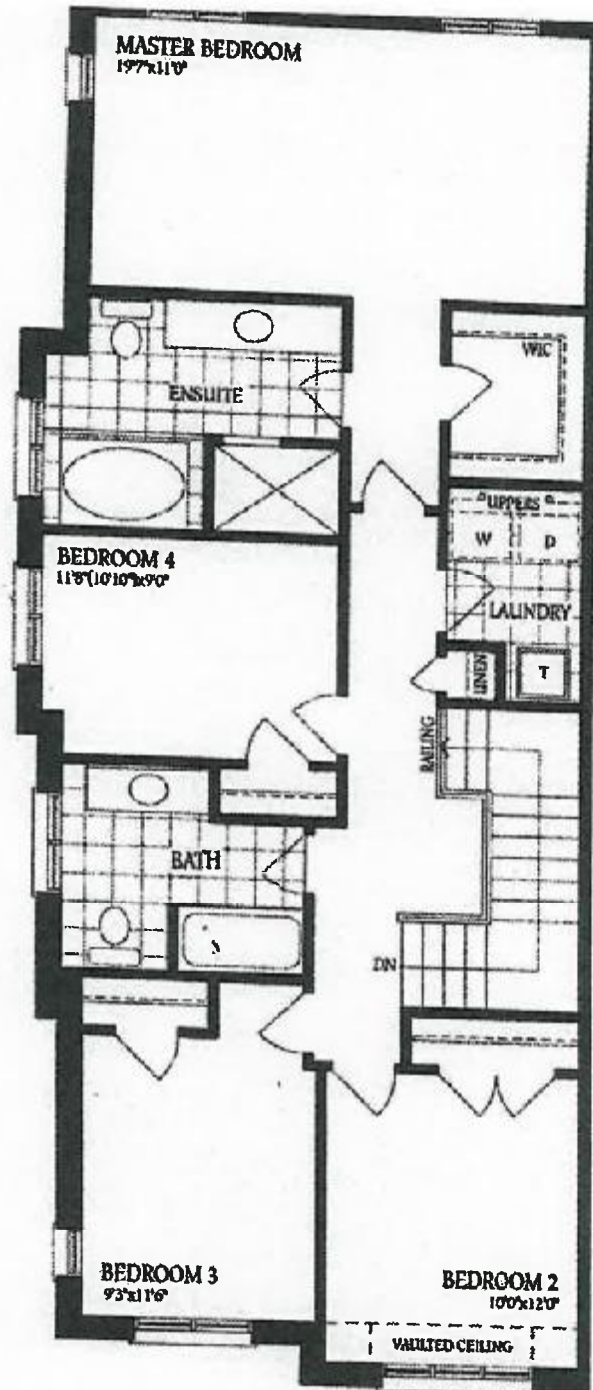


Ground Floor  
Corner Unit  
Elevation B

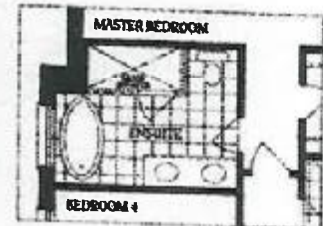
Ground Floor  
Corner Unit  
Elevation C

FI

69L  
Sonoma 4-C



Second Floor  
Corner Unit  
Elevation A



Optional Second Floor  
Corner Unit  
with Alternate Ensuite

## The Sonoma 4 CORNER

ELEVATION A - 2248 SQ.FT.  
ELEVATION B - 2248 SQ.FT.  
ELEVATION C - 2270 SQ.FT.



Second Floor  
Corner Unit  
Elevation B



Second Floor  
Corner Unit  
Elevation C

FT

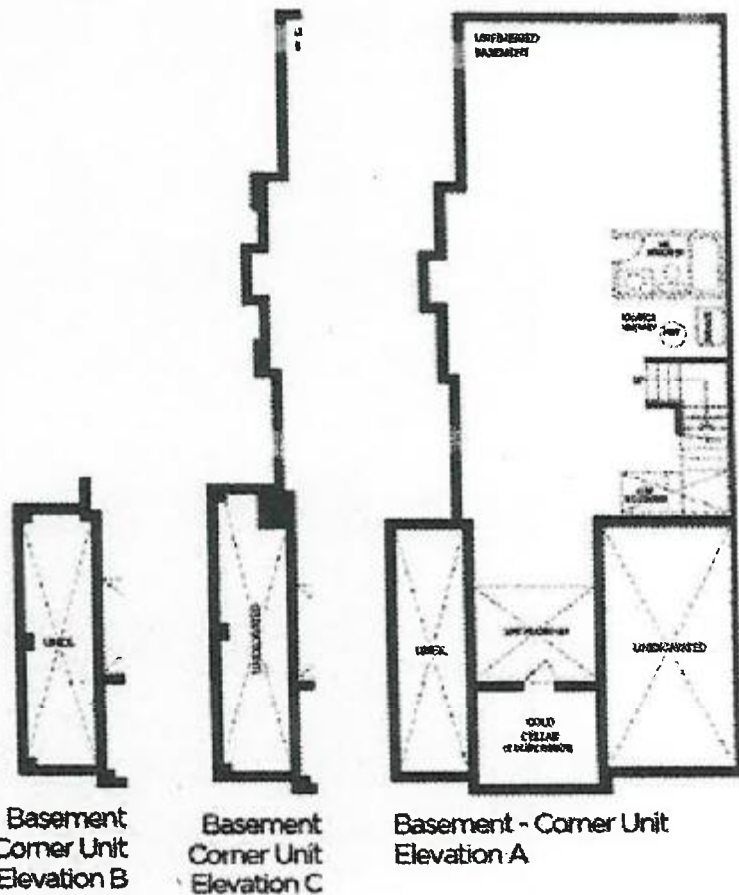
# The Sonoma 4 CORNER

ELEVATION A - 2248 SQ.FT.

ELEVATION B - 2248 SQ.FT.

ELEVATION C - 2270 SQ.FT. ✓

69L



FT