



CONSTRUCTION SUMMARY

64N Right - 2 - The Sonoma 3 (SD25-3) Elev B

Extras at Time of Sale

Note:

CONSTRUCTION

Inv.255	1 - OPTIONAL SECOND FLOOR WITH ALTERNATE ENSUITE
Line2499	Note:
12May21 / 18May21	

Inv.255	1 - ROUGH-IN GARAGE DOOR IF GRADE DOESN'T PERMIT (NO DOOR)
Line2501	Note:
12May21 / 18May21	

CONSTRUCTION - STRUCTURAL CHANGES

Inv.255	1 - SEPERATE SIDE ENTRANCE (AS PER SKETCH) APPROVED WITH 20 MINUTE FIRE-RATED DOOR AND FRAME.
Line2500	Note:
12May21 / 18May21	

INTERIOR RAILING

Inv.255	1 - INTERIOR RAILING - UPGRADE 1 - WROUGHT IRON
Line2498	Note:
12May21 / 18May21	

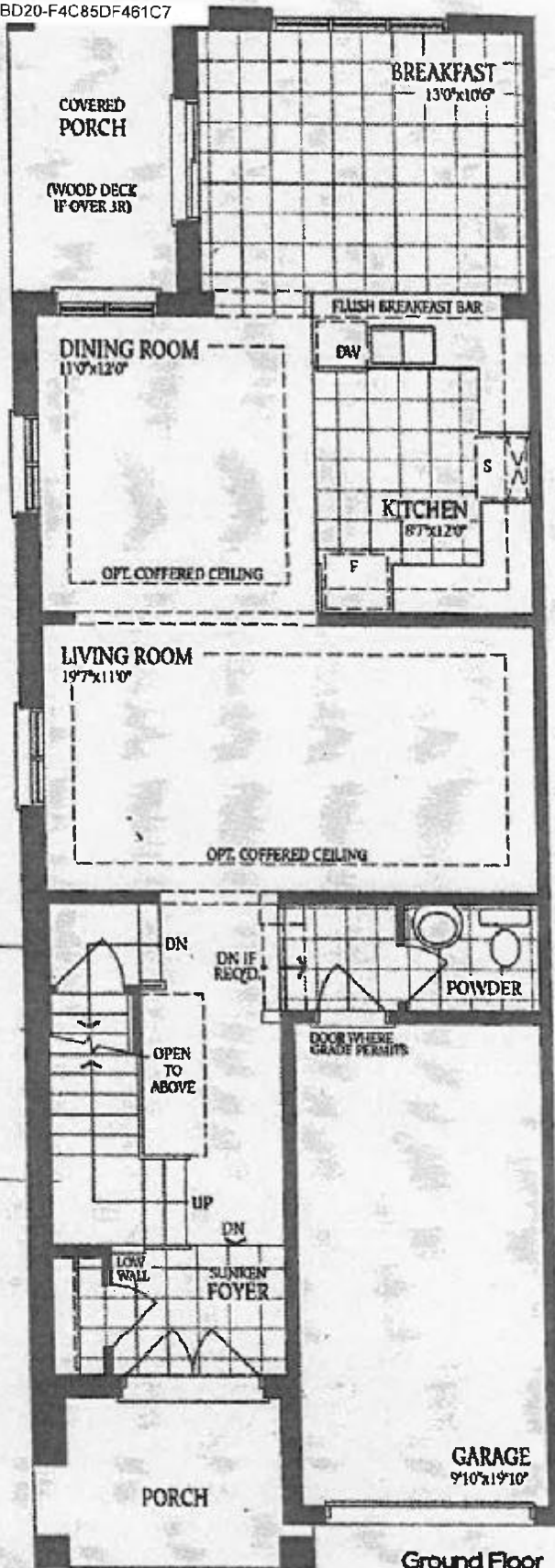
PAINT AND STAIN

Inv.255	1 - PAINT AND STAIN - WROUGHT IRON STAIRCASE - STAIN STAIRCASE TO MATCH
Line2497	Note:
12May21 / 18May21	

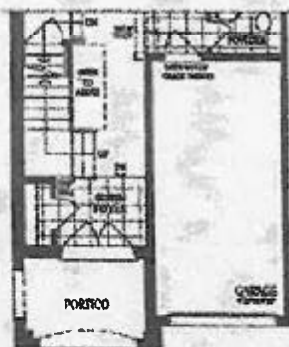
The Sonoma 3

ELEVATION A - 2062 SQ.FT.
ELEVATION B - 2070 SQ.FT.
ELEVATION C - 2056 SQ.FT.

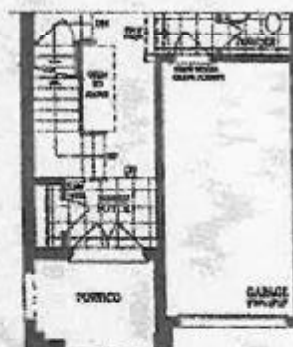
dot 64 Right



Ground Floor
Elevation A



Ground Floor
Elevation B



Ground Floor
Elevation C & C-Mod

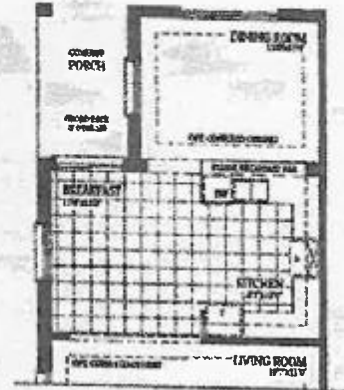
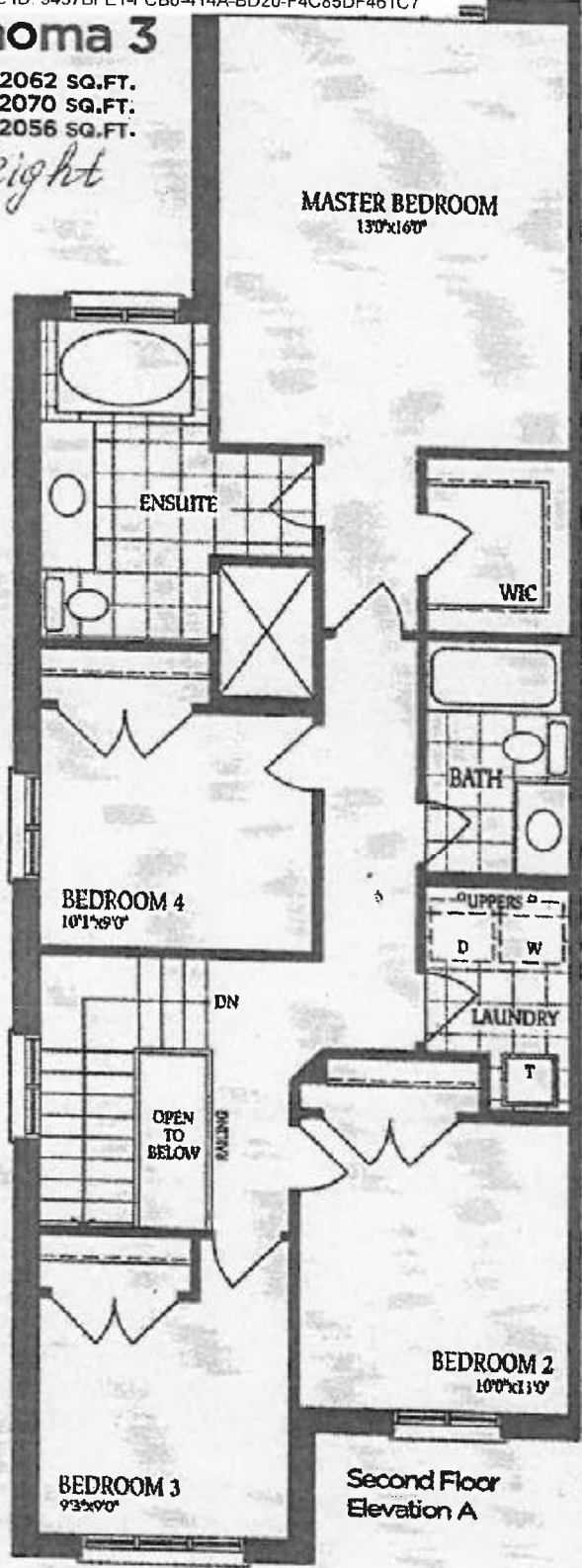
Designed by
Andy Benner
BAC2008062017

13-May-21

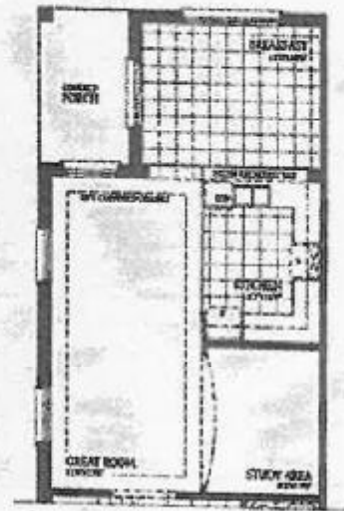
The Sonoma 3

ELEVATION A - 2062 SQ.FT.
ELEVATION B - 2070 SQ.FT.
ELEVATION C - 2056 SQ.FT.

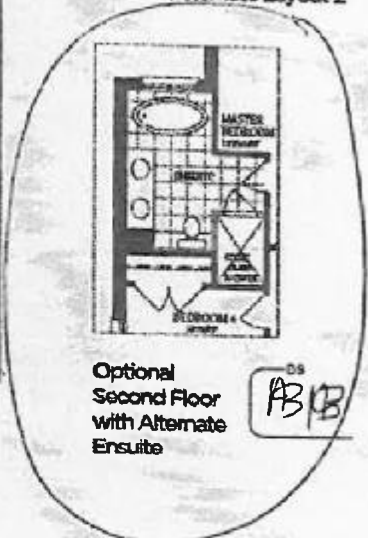
not 64 right



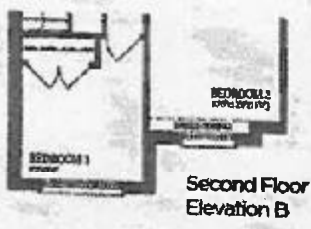
Optional Ground Floor with Alternate Layout 1



Optional Ground Floor with Alternate Layout 2



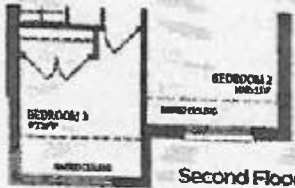
Optional Second Floor with Alternate Ensuite



Second Floor Elevation B



Second Floor Elevation C



Second Floor Elevation C - Mod.

Total for Elev. C-Mod:
2066 sq.ft.

The Sonoma 3

ELEVATION A - 2062 SQ.FT.
ELEVATION B - 2070 SQ.FT.
ELEVATION C - 2056 SQ.FT.

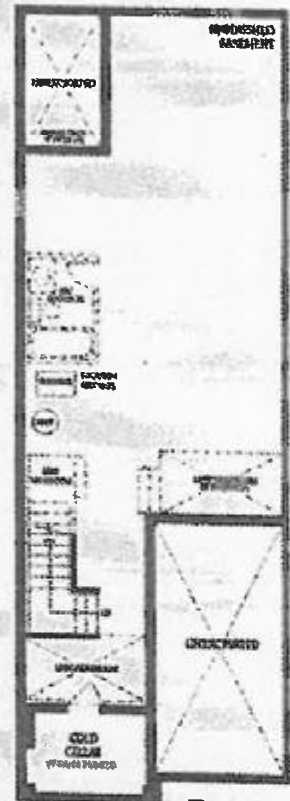
dot Gt Right



Basement
Elevation B



Basement
Elevation C & C-Mod.



Basement
Elevation A