



CONSTRUCTION SUMMARY

57N Left - 2 - The Sonoma 3 (SD25-3) Elev C Opt Alt Ground Floor

Extras at Time of Sale

Note:

CABINETRY

Inv.218	1 - CONVERT PENINSULA TO ISLAND
Line1937	Note:
21Apr21 / 13May21	
Inv.218	1 - LEAVE 36 INCH OPENING FOR STOVE
Line1946	Note:
21Apr21 / 13May21	

CEILINGS

Inv.218	1 - CEILINGS - SMOOTH CEILINGS THROUGHOUT MAIN FLOOR
Line1945	Note:
21Apr21 / 13May21	

CONSTRUCTION

Inv.218	1 - 3 PIECE WASHROOM WITH FULL GLASS SHOWER - IN LIEU OF LAUNDRY - AS PER SKETCH #2
Line1934	Note: (CLOSE OF THE DOOR FROM UPPER HALL)
21Apr21 / 13May21	
Inv.218	1 - OPTIONAL SECOND FLOOR WITH ALTERNATE ENSUITE
Line1935	Note:
21Apr21 / 13May21	
Inv.218	1 - 1 DOOR CLOSET IN LIEU OF 2 DOOR CLOSET - BEDROOM (TO ACCOMODATE ADDITIONAL ENSUITE)- AS PER SKETCH # 2
Line1933	Note:
21Apr21 / 13May21	
Inv.218	1 - MOVE LAUNDRY TO THE BASEMENT- AS PER SKETCH # 1
Line1932	Note: PURCHASER IS AWARE THAT BASEMENT IS UNFINISHED AND NO CABINETRY WILL BE INSTALLED , PLEASE LEAVE CABINETS IN GARAGE.
21Apr21 / 13May21	

ELECTRICAL

Inv.218	8 - ELECTRICAL - EXTRA INTERIOR CEILING OUTLET ROUGH-IN - NO FIXTURE - ON NEW SWITCH - OVER BREAKFAST BAR CENTERED, OVER SINKS IN MASTER ENSUITE- 2PC AND 1 ON N/SW OVER TUB , OVER SINK IN MAIN BATH , OVER SINK IN ADDITIONAL ENSUITE, OVER SINK IN POWDER ROOM
Line1947	Note: DO NOT INSTALL WALL MOUNT BARS IN ALL WASHROOMS INCLUDING POWDER ROOM, USE PURCHASED ROUGH INS, ADD TEMPORARY BULB OR ANYTHING THAT WOULD REQUIRE TO CLOSE HOME.
21Apr21 / 13May21	

HEATING AND AIR CONDITIONING

Inv.218	1 - HEATING AND AIR CONDITIONING - INCREASE KITCHEN EXHAUST TO 8 INCH
Line1939	Note:
21Apr21 / 13May21	
Inv.218	1 - HEATING AND AIR CONDITIONING - ROUGH IN GAS LINE - PER APPLIANCE
Line1938	Note: LEAVE ELECTRICAL PLUG FOR ELECTRIC STOVE
21Apr21 / 13May21	

PAINT AND STAIN



CONSTRUCTION SUMMARY

57N Left - 2 - The Sonoma 3 (SD25-3) Elev C Opt Alt Ground Floor

Inv.218	1 - PAINT AND STAIN - WROUGHT IRON STAIRCASE - STAIN STAIRCASE TO MATCH
Line1941	Note:
21Apr21 / 13May21	

PLUMBING

Inv.218	1 - PLUMBING - WATERLINE FOR ICE MAKER HOOK UP - INCLUDES VALVE
Line1942	Note:
21Apr21 / 13May21	

Inv.218	1 - PLUMBING - POT TOP ROUGH IN ONLY - ABOVE STOVE - CENTERED
Line2451	Note:
21Apr21 / 13May21	

STAIRS AND RAILING

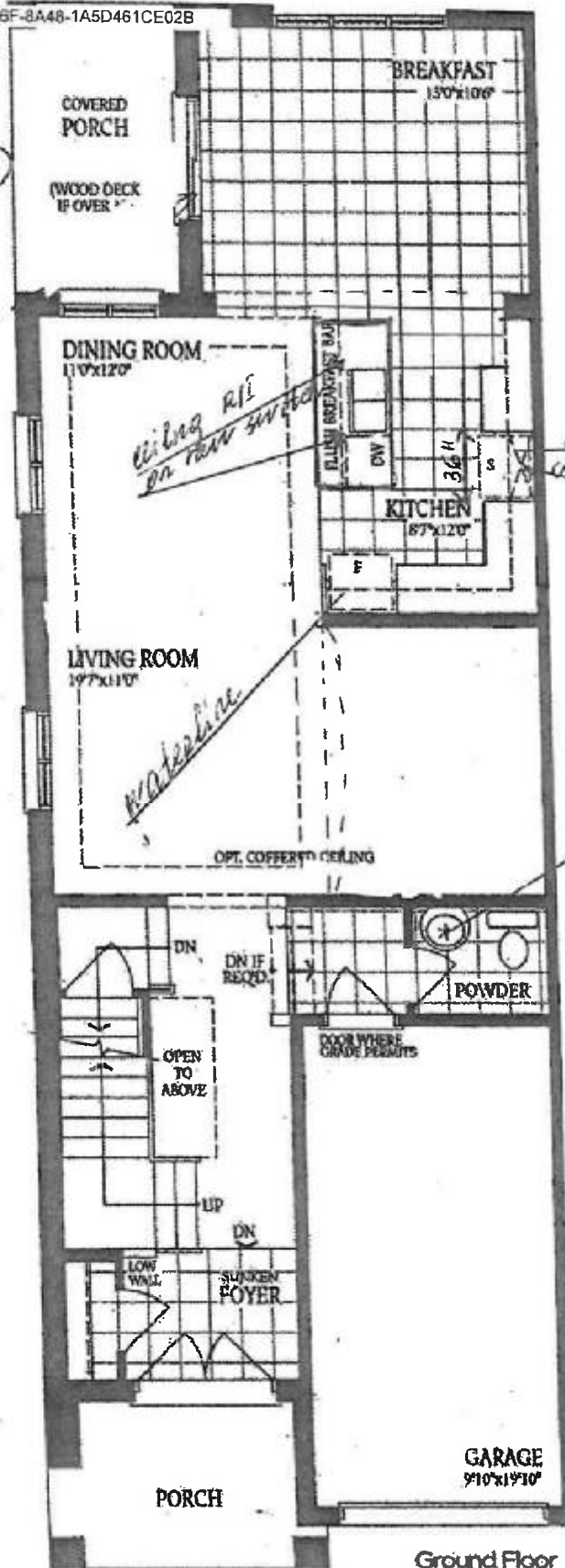
Inv.218	1 - UPGRADE RAILING -MAIN TO SECOND FLOOR - UPGRADE 2 - WROUGHT IRON (NATURAL FINISH)
Line1940	Note:
21Apr21 / 13May21	

TRIM CARPENTRY

Inv.218	1 - 8FT DOORS AND ARCHWAYS THROUGHOUT MAIN FLOOR
Line1943	Note:
21Apr21 / 13May21	

THE SCHOLIA 3
ELEVATION A - 2062 SQ.FT.
ELEVATION B - 2070 SQ.FT.
ELEVATION C - 2056 SQ.FT.

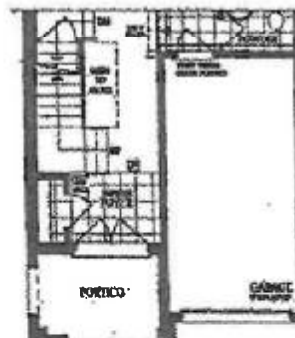
*Optional ground floor
not 57 left*



Ground Floor
Elevation A



Ground Floor
Elevation B



Ground Floor
Elevation C & C-Mod

DS
AAT

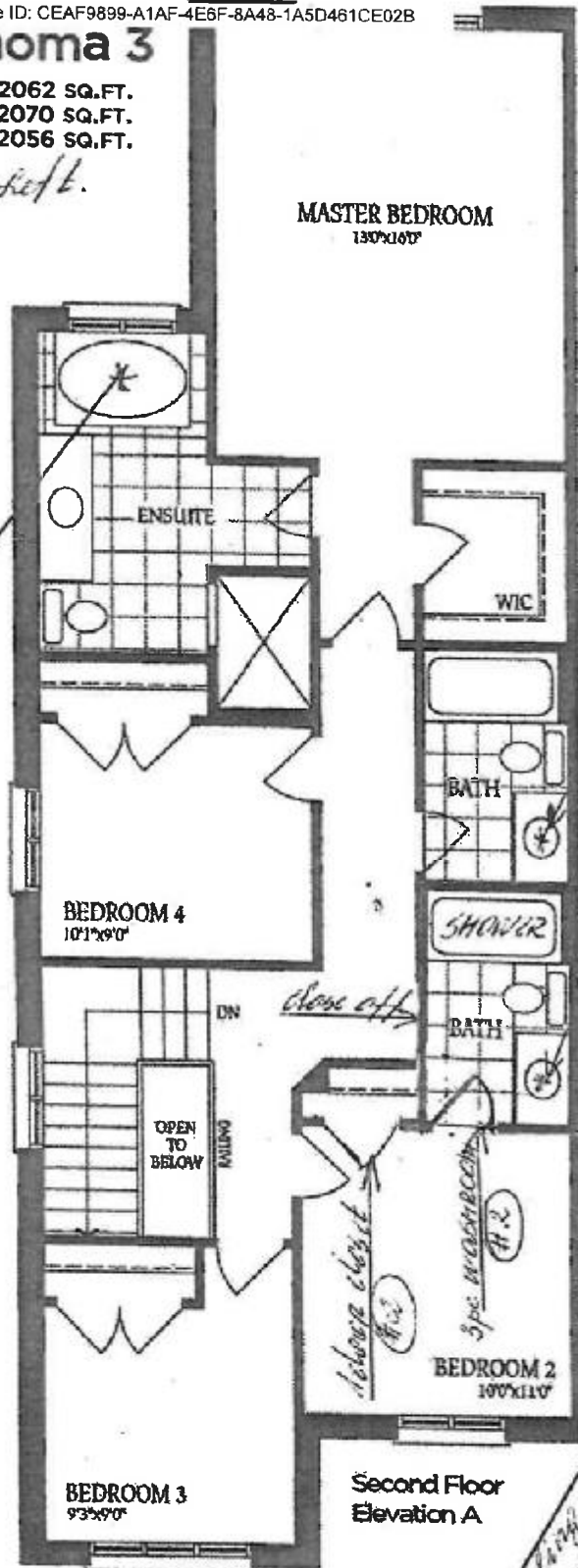
The Sonoma 3

ELEVATION A - 2062 SQ.FT.

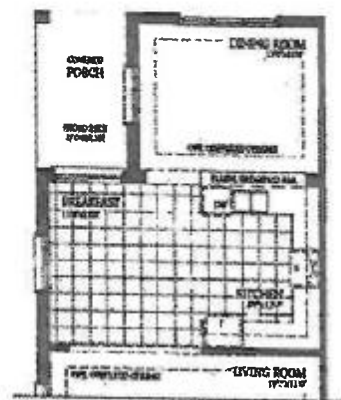
ELEVATION B - 2070 SQ.FT.

ELEVATION C - 2056 SQ.FT.

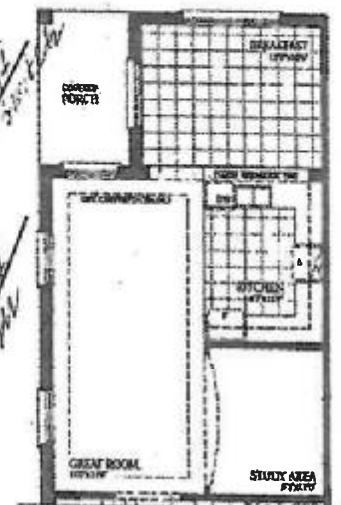
dot 57 left.



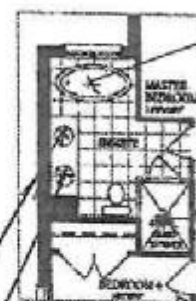
Second Floor
Elevation A



Optional Ground Floor
with Alternate Layout 1



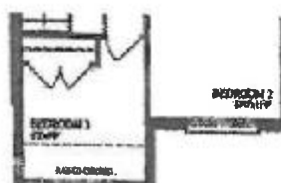
Optional Ground Floor
with Alternate Layout 2



Optional
Second Floor
with Alternate
Ensuite



Second Floor
Elevation B



Second Floor
Elevation C



Second Floor
Elevation C - Mod.

Total for Elev. C-Mod:
2066 sq.ft.

