



CONSTRUCTION SUMMARY

61N Left - 2 - The Sonoma 3 (SD25-3) Elev B

Extras at Time of Sale

Note:

CEILINGS

Inv.224 1 - CEILINGS - SMOOTH CEILINGS THROUGHOUT MAIN FLOOR ONLY

Line2089 Note:

26Apr21 / 3May21

CONSTRUCTION

Inv.224 1 - OPTIONAL SECOND FLOOR WITH ALTERNATE ENSUITE

Line2087 Note:

26Apr21 / 3May21

ELECTRICAL

Inv.224 1 - ELECTRICAL - EXTRA INTERIOR CEILING OUTLET ROUGH-IN - NO FIXTURE - ON NEW SWITCH

Line2094 Note:

26Apr21 / 3May21

HEATING AND AIR CONDITIONING

Inv.224 1 - HEATING AND AIR CONDITIONING - ROUGH IN GAS LINE - PER APPLIANCE

Line2093 Note:

26Apr21 / 3May21

INTERIOR RAILING

Inv.224 1 - INTERIOR RAILING - UPGRADE 1 - WROUGHT IRON

Line2090 Note:

26Apr21 / 3May21

PAINT AND STAIN

Inv.224 1 - PAINT AND STAIN - WROUGHT IRON STAIRCASE - STAIN STAIRCASE TO MATCH

Line2091 Note:

26Apr21 / 3May21

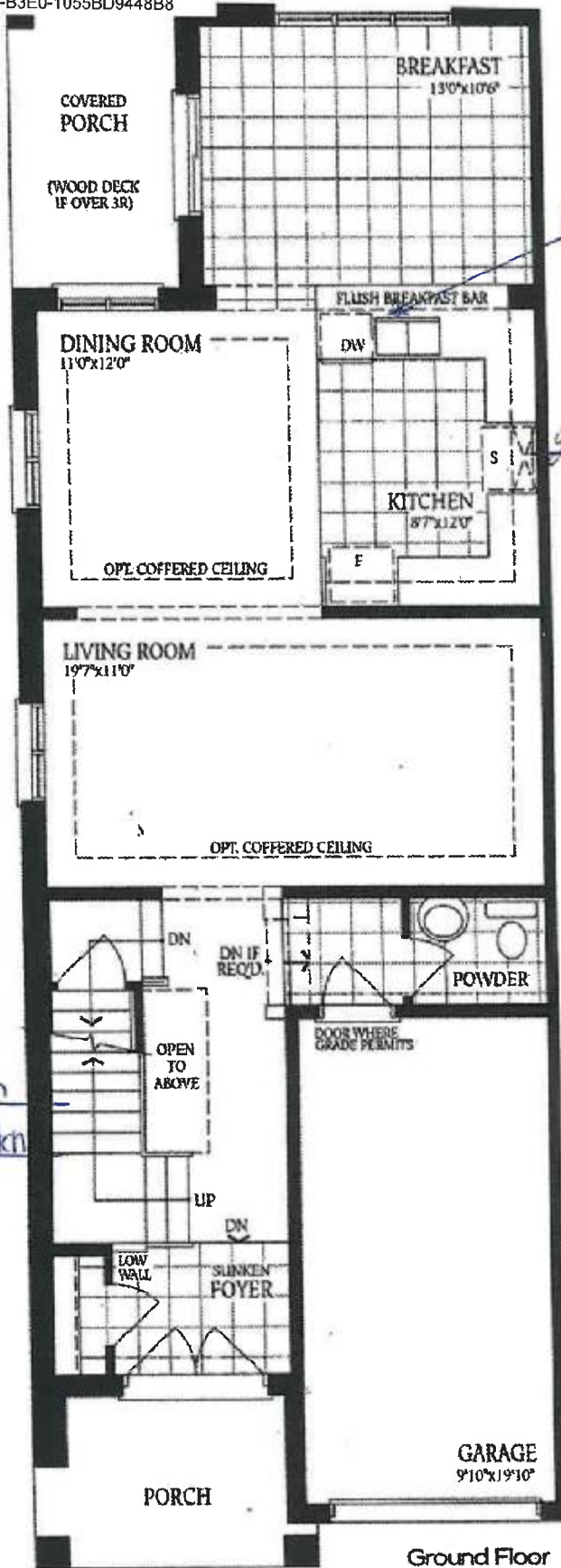
The Sonoma 3

ELEVATION A - 2062 SQ.FT.

ELEVATION B - 2070 SQ.FT.

ELEVATION C - 2056 SQ.FT.

Lot 61 Left



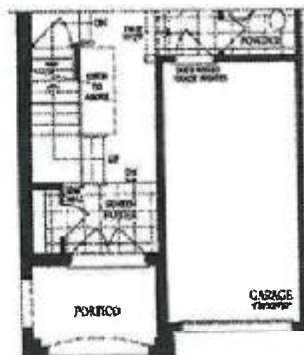
wiring R/E on new ser.

cab line

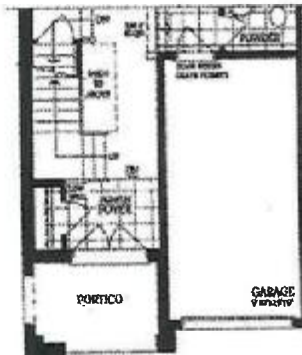
upgrade 1 wrought iron
slat staircase to match

*Smooth ceilings on
main floor only*

Ground Floor
Elevation A



Ground Floor
Elevation B



Ground Floor
Elevation C & C-Mod

DocuSigned by:  R. Day Sarkar
29-Apr-21 29-Apr-21

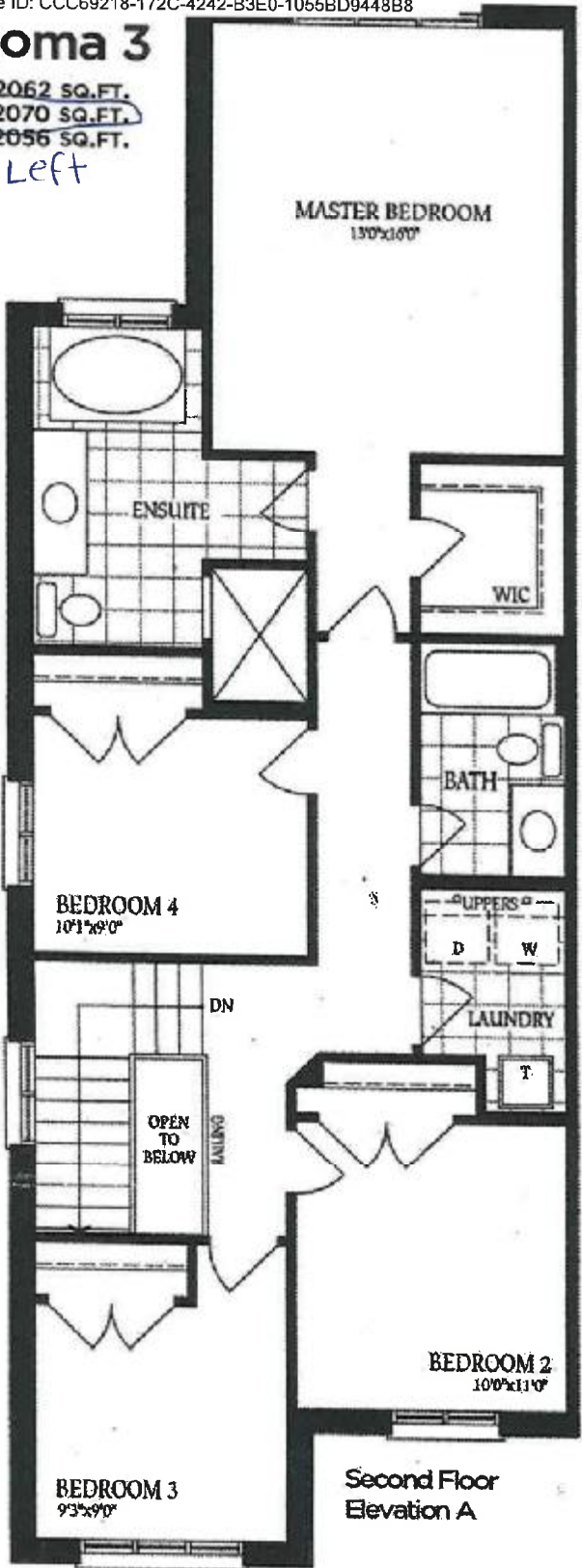
The Sonoma 3

ELEVATION A - 2062 SQ.FT.

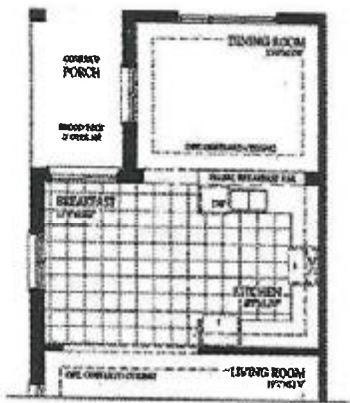
ELEVATION B - 2070 SQ.FT.

ELEVATION C - 2056 SQ.FT.

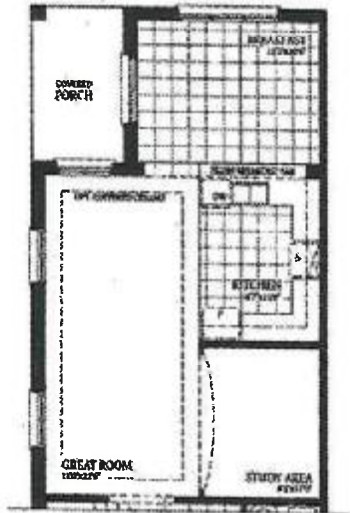
Lot 61 Left



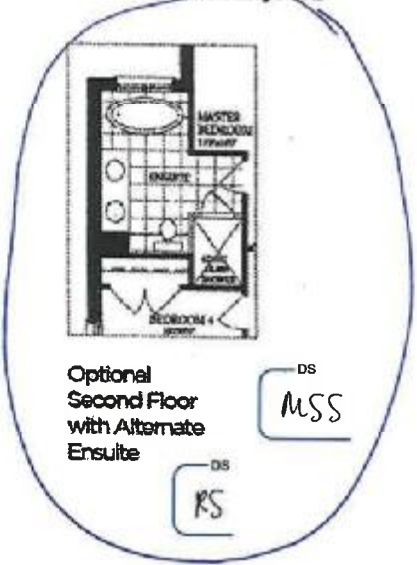
Second Floor
Elevation A



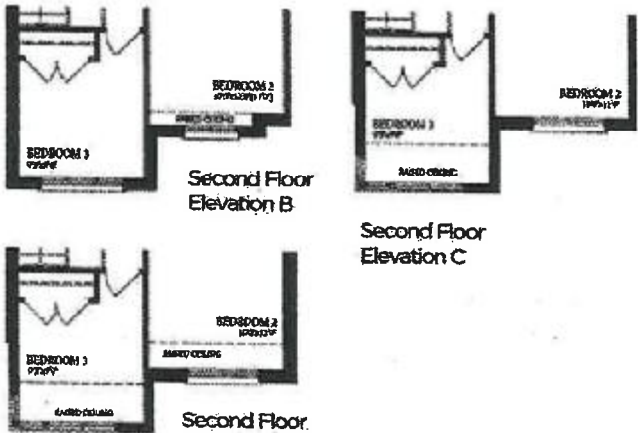
Optional Ground Floor
with Alternate Layout 1



Optional Ground Floor
with Alternate Layout 2



Optional
Second Floor
with Alternate
Ensuite



Total for Elev. C-Mod:
2066 sq.ft.

DS
RS

DS
MSS

The Sonoma 3

ELEVATION A - 2062 SQ.FT.

ELEVATION B - 2070 SQ.FT.

ELEVATION C - 2056 SQ.FT.

- Lot 61 Left

