



CONSTRUCTION SUMMARY

139N Right - 1 - The Sonoma 2 (SD25-2) Elev C

Extras at Time of Sale

Note:

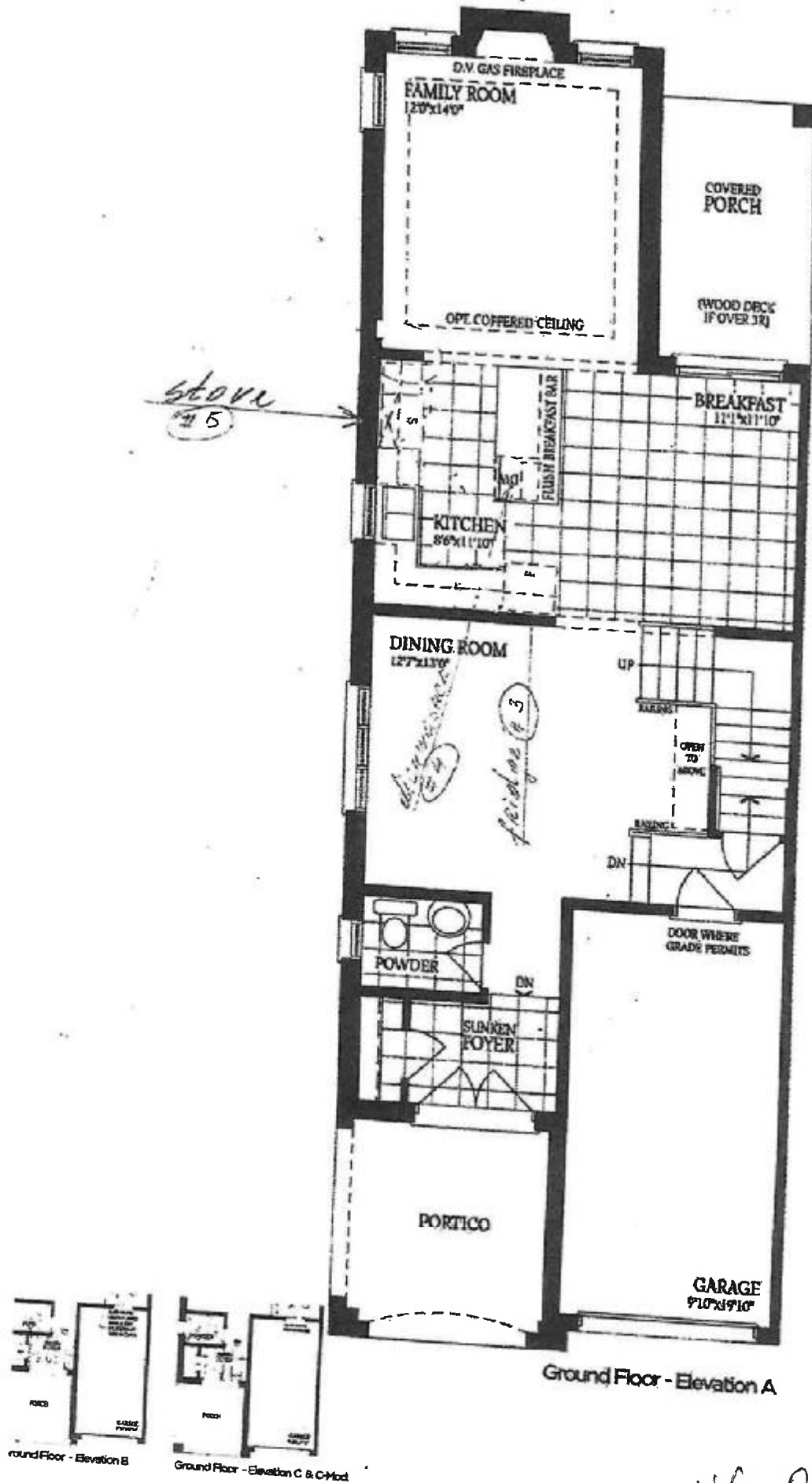
CONSTRUCTION

Inv.139	1 - MOVE MASTER BEDROOM DOOR APPRIXIMATELY 3FT INSIDE BEDROOM - AS PER SKETCH # 1
Line1051	Note:
24Feb21 / 15Mar21	
Inv.139	1 - DELETE LINEN CLOSETS BACK WALL - LEAVE DOOR AS ENTRY TO MAIN BATH- AS PER SKETCH #2
Line1052	Note:
24Feb21 / 15Mar21	
Inv.139	1 - REARRANGE APPLIANCES - IN KITCHEN 1)MOVE FRIDGE TO THE INTERIOR WALL - BETWEEN KITCHEN AND DINING ROOM - AS PER SKETCH # 3 2) MOVE DISHWASHER TO THE ISLAND - AS PER SKETCH # 4 3) MOVE STOVE TO EXTERIOR WALL - AS PER SKETCH # 5
Line1053	Note: PRICE INCLUDES ALL CHANGES
24Feb21 / 15Mar21	
Inv.139	1 - ROUGH IN MAN GARAGE DOOR *IF* GRADE DOES NOT PERMIT.
Line1075	Note:
24Feb21 / 15Mar21	

The Sonoma 2

ELEVATION A - 1895 SQ. FT.
ELEVATION B - 1893 SQ. FT.
ELEVATION C - 1904 SQ. FT.

lot 139 right

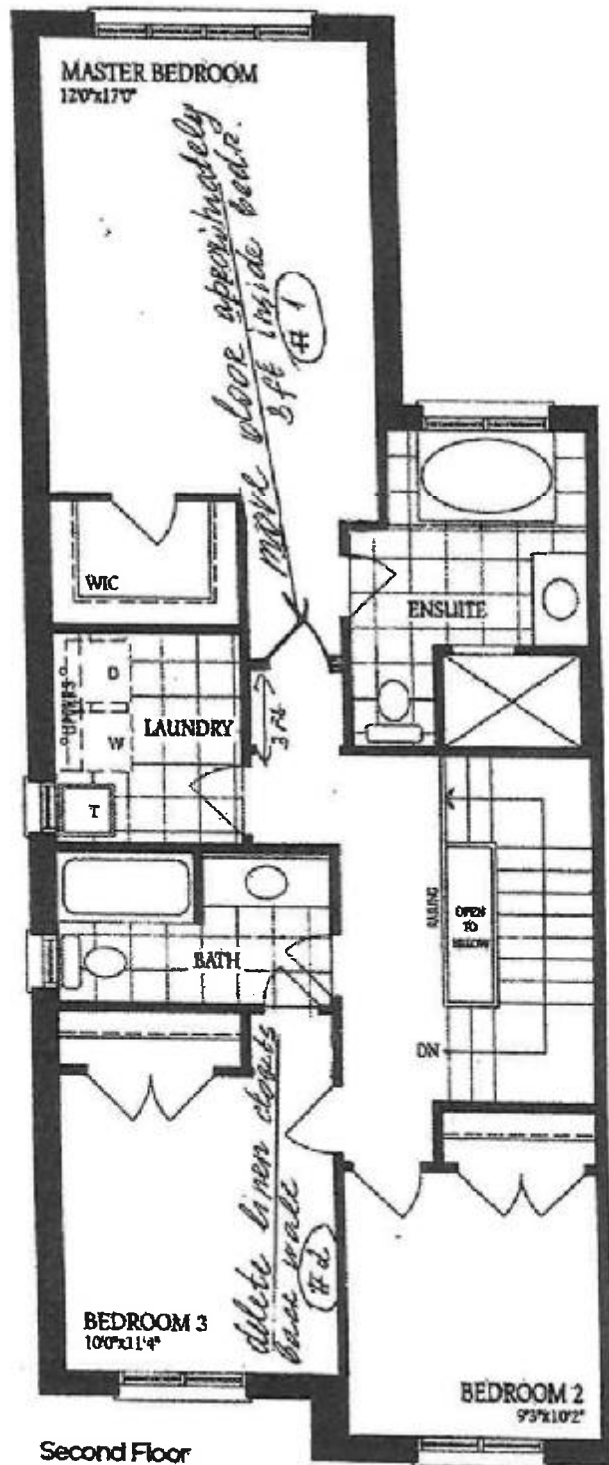


VG OB

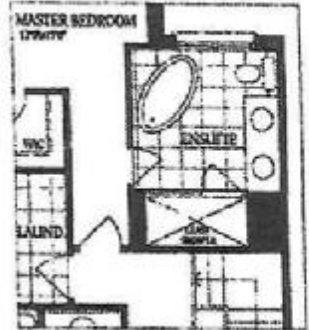
The Sonoma 2

ELEVATION A - 1895 SQ.FT.
ELEVATION B - 1893 SQ.FT.
ELEVATION C - 1904 SQ.FT.

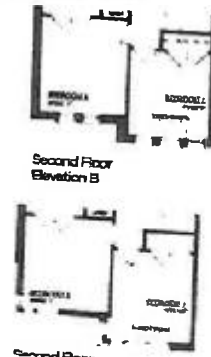
Lot 13 B Right



Second Floor
Elevation A



Optional Second Floor
with Alternate Ensuite



Second Floor
Elevation B



Second Floor
Elevation C - Mod.
Total for Elev. C-Mod:
1015 sq.ft.

VG OB

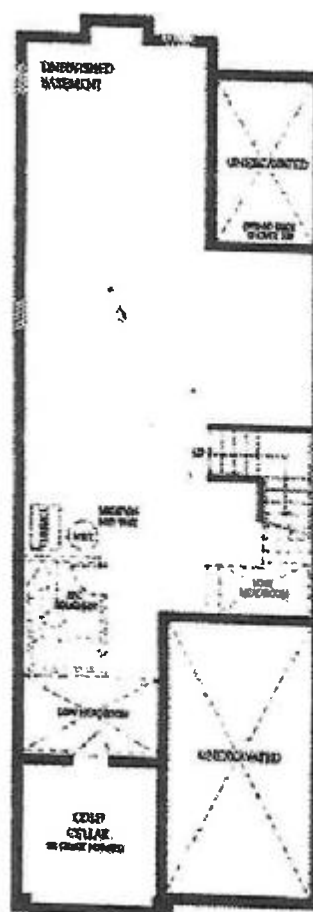
The Sonoma 2

ELEVATION A - 1895 SQ.FT.
ELEVATION B - 1005

ELEVATION B - 1893 SQ.FT.
ELEVATION C - 1893 SQ.FT.

ELEVATION C - 1904 SQ.FT.

Lot 13 right



Basement

VG OB