



POURED-IN-PLACE STAIRS
WITH MASONRY VENEER
ON BOTH SIDES

DROP GARAGE ROOF 12"

LOT #156 - FRONT ELEVATION
UNIT # 42-15 ELEV. 'C'



DROP GARAGE ROOF 12"

LOT #155 - FRONT ELEVATION
UNIT # 42-15 ELEV. 'B' REV



LOT #154L - FRONT ELEVATION
UNIT # SD25-4 ELEV. 'C'



LOT #154R - FRONT ELEVATION
UNIT # SD25-4COR 154 ELEV. 'C'



DROP GARAGE ROOF 12"

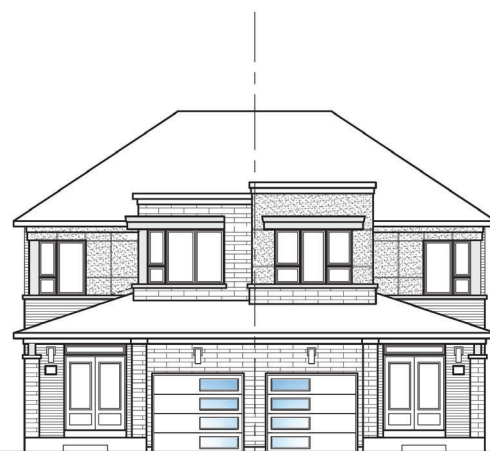
LOT #154R - FLANKAGE ELEVATION
UNIT # SD25-4COR 154 ELEV. 'C'



LOT #154R - REAR ELEVATION LOT #154L - REAR ELEVATION
UNIT # SD25-4COR 154 EL. 'C' UNIT # SD25-2 ELEV. 'C'



LOT #153L - FRONT ELEVATION
UNIT # SD25-2 ELEV. 'B'



LOT #153R - FRONT ELEVATION
UNIT # SD25-2 ELEV. 'B' REV



LOT #152L - FRONT ELEVATION
UNIT # SD25-2 ELEV. 'C'



LOT #152R - FRONT ELEVATION
UNIT # SD25-2MOD EL. 'C' REV



LOT #151 - FRONT ELEVATION
UNIT # 38-6 ELEV. 'C'



LOT #149 - FRONT ELEVATION
UNIT # 38-17 ELEV. 'B' REV



LOT #148 - FRONT ELEVATION
UNIT # 38-15 ELEV. 'A'



LOT #147 - FRONT ELEVATION
UNIT # 38-3 ELEV. 'A' REV



LOT #146 - FRONT ELEVATION
UNIT # 38-17 ELEV. 'C'



LOT #145 - FRONT ELEVATION
UNIT # 38-3 ELEV. 'C' REV



LOT #144 - FRONT ELEVATION
UNIT # 38-6 ELEV. 'B'

POURED-IN-PLACE STAIRS
WITH MASONRY VENEER
ON BOTH SIDES



LOT #143 - FRONT ELEVATION
UNIT # 38-17 ELEV. 'C' REV

POURED-IN-PLACE STAIRS
WITH MASONRY VENEER
ON BOTH SIDES



LOT #142 - FRONT ELEVATION
UNIT # 38-1 ELEV. 'C'



DROP GARAGE ROOF 12"


LOT #141 - FRONT ELEVATION
UNIT # 38-3 ELEV. 'C' REV

It is the builder's complete responsibility to ensure that all plans submitted for approval fully comply with the Architectural Guidelines and all applicable regulations and requirements including zoning provisions and any provisions in the subdivision agreement. The Control Architect is not responsible in any way for examining or approving site (lotting) plans or working drawings with respect to any zoning or building code or permit matter or that any house can be properly built or located on its lot.

LOTS 143-145, 147, 149, 151 & 156

This is to certify that these plans comply with the applicable Architectural Design Guidelines approved by the Town of BRADFORD WEST GWILLIMBURY.

JOHN G. WILLIAMS LTD., ARCHITECT
ARCHITECTURAL CONTROL REVIEW
AND APPROVAL

APPROVED BY: 
DATE: MAR 08, 2021

This stamp certifies compliance with the applicable Design Guidelines only and bears no further professional responsibility.

BAYVIEW WELLINGTON
"GREEN VALLEY EAST"

2 OF 3

VA3 Design
16023 NOVEMBER 2020

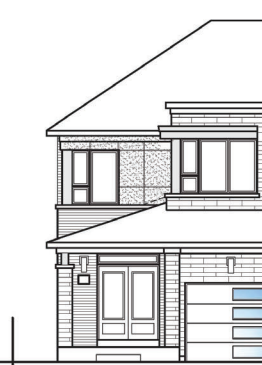
16023-SSA



LOT #140L - FRONT ELEVATION
UNIT # SD25-3 ELEV. 'B'



LOT #140R - FRONT ELEVATION
UNIT # SD25-3 ELEV. 'B'



LOT #139L - FRONT ELEVATION
UNIT # SD25-2 ELEV. 'C'



LOT #139R - FRONT ELEVATION
UNIT # SD25-2MOD ELEV. 'C'



LOT #138R - REAR ELEVATION
UNIT # SD25-3 ELEV. 'B'



LOT #138L - REAR ELEVATION
UNIT # SD25-5COR ELEV. 'B'



LOT #138L - FLANKAGE ELEVATION
UNIT # SD25-5COR ELEV. 'B'



LOT #138L - FRONT ELEVATION
UNIT # SD25-5COR ELEV. 'B'



LOT #138R - FRONT ELEVATION
UNIT # SD25-3 ELEV. 'B'



LOT #137 - FRONT ELEVATION
UNIT # 38-1 ELEV. 'A'



LOT #136 - FRONT ELEVATION
UNIT # 38-3 ELEV. 'C'



LOT #135 - FRONT ELEVATION
UNIT # 38-17 ELEV. 'C' REV



LOT #183 - FRONT ELEVATION
UNIT # 38-6 ELEV. 'C'

BLOCK #184 PART 5 - FRONT ELEVATION
UNIT # 38-3 ELEV. 'C' REV



BLOCK #184 PART 4 - FRONT ELEVATION
UNIT # 38-15 ELEV. 'C'
MODEL HOME



BLOCK #184 PART 3 - FRONT ELEVATION
UNIT # 38-6 ELEV. 'B' REV
PRESENTATION CENTER

CURRENT PARKING LOT

BLOCK #184 PART 2 - FRONT ELEVATION
UNIT # 38-? ELEV. 'C'

BLOCK #184 PART 1 - FRONT ELEVATION
UNIT # 38-? ELEV. 'C'

It is the builder's complete responsibility to ensure that all plans submitted for approval fully comply with the Architectural Guidelines and all applicable regulations and requirements including zoning provisions and any provisions in the subdivision agreement. The Control Architect is not responsible in any way for examining or approving site (lotting) plans or working drawings with respect to any zoning or building code or permit matter or that any house can be properly built or located on its lot.

BLOCK 184 PART 3 & 4
This is to certify that these plans comply with the applicable Architectural Design Guidelines approved by the Town of BRADFORD WEST GWILLIMBURY.

JOHN G. WILLIAMS LTD., ARCHITECT
ARCHITECTURAL CONTROL REVIEW
AND APPROVAL

APPROVED BY:
DATE: MAR 08, 2021

This stamp certifies compliance with the applicable Design Guidelines only and bears no further professional responsibility.