

GOEMANS APPLIANCES

Expect More. Get More.

APPLIANCE SPECIFICATIONS



PROJECT PARTNER:
Bill To: 6479896103

SHIP TO:
Ship To: 6479896103

SHEYKHISLYAMOV, LYERA & ALIM
2 WESTLAKE CRES BLOCK 161 UNIT # 5
BRADFORD, ON L3Z 4K3

REMINDER:

To ensure a smooth project it is the responsibility of the homeowner / purchaser of appliances to share all the attached specifications with their cabinet provider, contractor, or any other tradesperson so they have the information required to complete their work accurately. Product specifications are for planning purposes only and are subject to change without notice. Refer to installation instructions shipped with the product before cutting cabinets, counters, panels, etc.

Goemans Appliances assumes no liability for product specifications.

Ship To: 6479896103

Bill To: 6479896103

SHEYKHISLYAMOV, LYERA & ALIM
2 WESTLAKE CRES BLOCK 161 UNIT # 5
BRADFORD, ON L3Z 4K3

| <i>Models</i> | <i>Pages</i> |
|---------------------------------------|--------------|
| LRMNC1803S LG Refrigeration | 3-4 |
| LDT5678SS LG Dishwasher | 5-6 |
| LREL6323S LG Range | 7-9 |

**Goemans Appliances**

goemans.com

JASON NG

9052641771

Document **HB00023157-21-1**

Version 1.1

Tue, Mar 9, 2021

3:11 PM EST



enterprise.steelcod.com/sp/goem/ZSELM4N
D

Note about page numbers:

Because the original manufacturer's documents are not altered in any way, the page numbers displayed on the page may not correspond to the page number within this package.

All specifications are intended for initial planning purposes only.

Manufacturers reserve the right to change specifications at any time without notice. Always consult the installation instructions found on the manufacturer's website or included with the appliances before installation.

LG REFRIGERATION

LRMNC1803_

33" Counter Depth 4-Door Refrigerator, 19 cu.ft.

Inverter Linear Compressor with 10 Year Warranty

Smudge Resistant Stainless Steel Finish

Counter Depth Design

Smart Cooling System with Door Cooling+

1 Full Shelf + 2 Half Shelves (1 Folding)

Premium LED Lighting

Flat Duct Design

ENERGY STAR® Qualified



CAPACITY

| | |
|-------------------------|------|
| Refrigerator (cu.ft.) | 11.2 |
| Freezer (cu.ft.) | 7.8 |
| Total Capacity (cu.ft.) | 19.0 |

ENERGY

| | |
|-------------------------------|-----|
| Energy Consumption (kWh/Year) | 459 |
| ENERGY STAR® Qualified | Yes |

WATER & ICE SYSTEM

| | |
|-----------------------|----|
| Ice & Water Dispenser | No |
| Dispenser Type | - |
| Ice System | - |
| Dual Ice | No |
| Dispenser Light | - |
| Water Filter | - |

COOLING

| | |
|----------------------------|-----|
| Inverter Linear Compressor | Yes |
| Smart Cooling® System | Yes |
| Multi-Air Flow Cooling | Yes |
| Temperature Sensors | 3 |
| Fresh Air Filter | No |

CONVENIENCE

| | |
|----------------------------|----------------------|
| Display Type | Membrane / White LED |
| Temperature Controls | Electronic/Digital |
| Door Alarm | Yes |
| Child Lock | Yes |
| Auto Closing Door Hinge | Yes |
| Sabbath Mode | No |
| LoDecibel™ Quiet Operation | Yes |

REFRIGERATOR

| | |
|-------------------------------|---------------------------------|
| No. of Shelves | 1 Full, 2 Half (1 Folding) |
| Cantilevered Shelves | Hybrid Cantilevered |
| Shelf Construction | Spill Protector™ Tempered Glass |
| Crisper Bins | 2 Humidity Crispers |
| Glide N' Serve® Pantry Drawer | No |
| Refrigerator Light | Ceiling LED |

REFRIGERATOR DOOR

| | |
|-----------------------|-----------------|
| No. of Bins | 6 Total |
| Door Bin Construction | 1 Piece (Clear) |

FREEZER

| | |
|-----------------------------|---------------------|
| Door Type | Pull Drawer |
| Drawers | 2-Tier Organization |
| DuraBase™ Solid Drawer Base | Yes |
| Freezer Light | Yes |

SMART FEATURES

| | |
|------------------|-----|
| Wi-Fi Enabled | No |
| Voice Activation | No |
| Works with | - |
| SmartDiagnosis™ | Yes |

MATERIALS AND FINISHES

| | |
|------------------|----------------------------------|
| Contour Door | Yes |
| Hidden Hinges | Yes |
| Surface | Smooth |
| Available Colour | Smudge Resistant Stainless Steel |

DIMENSIONS/CLEARANCES/WEIGHTS

| | |
|--------------------------------------|-----------------------------|
| Depth with Handles | 28 3/4" |
| Depth without Handles | 28 3/4" |
| Depth without Door | 24" |
| Depth (Total with Door Open) | 41 7/8" |
| Height to Top of Case | 68 5/8" |
| Height to Top of Door Hinge | 70 3/8" |
| Width | 32 7/8" |
| Width (Door Open 90° with Handle) | 36 7/8" |
| Width (Door Open 90° without Handle) | 36 7/8" |
| Door Edge Clearance with Handle | 3 1/8" |
| Door Edge Clearance without Handle | 3 1/8" |
| Installation Clearance | Sides 1/8", Top 1", Back 2" |
| Weight (Unit/Carton) | 231 lbs. / 253 lbs. |
| Carton Dimensions (WxHxD) | 37 1/2" x 71 7/8" x 37" |

LIMITED WARRANTY

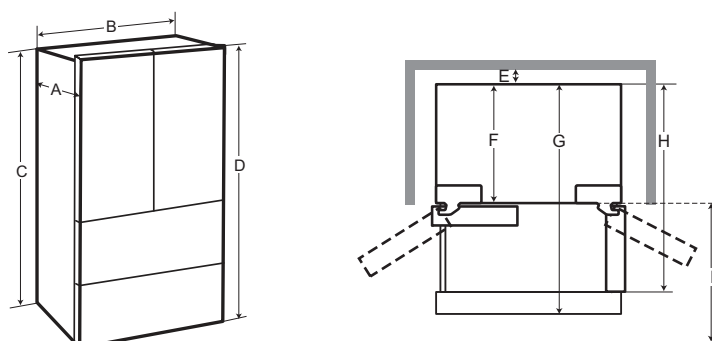
| | |
|----------------------------|----------|
| Parts & Labor | 1 Year |
| Sealed System | 7 Years |
| Inverter Linear Compressor | 10 Years |

UPC CODES

| | |
|--------------------|--------------|
| LRMNC1803S.ASTCNA0 | 772454071676 |
|--------------------|--------------|

Dimensions and Clearances

- Check the dimensions of the appliance and the installation path to ensure there is sufficient room to move the refrigerator through doors or narrow openings.
- If an opening is too narrow to fit the refrigerator through, remove the refrigerator doors. See Removing/Assembling the Doors and Drawers in this manual.
- The installation location chosen for the refrigerator should allow space behind the unit for connections and airflow and space in front to open the doors and drawers.
- Too small of a distance from adjacent items may result in lowered freezing capability and increased electricity consumption charges. Allow at least 24 inches (610 mm) in front of the refrigerator to open the doors, and at least 2 inches (50 mm) between the back of the refrigerator and the wall.



| - | Dimension/Clearance | LRMNC1803* |
|---|----------------------------------------|-------------------|
| A | Depth without Handle | 28 3/4" (734 mm) |
| B | Width | 32 7/8" (835 mm) |
| C | Height to Top of Case | 68 5/8" (1742 mm) |
| D | Height to Top of Hinge | 70 3/8" (1787 mm) |
| E | Back Clearance | 2" (50 mm) |
| F | Depth without Door | 24 1/4" (610 mm) |
| G | Depth (Total with Freezer Drawer Open) | 45 3/4" (1162 mm) |
| H | Depth (Total with Door Open 90°) | 41 7/8" (1063 mm) |
| I | Front Clearance | 24" (610 mm) |

LG DISHWASHERS

LDT5678_

Top Control Wi-Fi Enabled Dishwasher
with QuadWash® and 3rd Rack

QuadWash®

Smudge Resistant Finish

SmartThinQ® Wi-Fi Connectivity

3rd Rack

EasyRack™ Plus System

Stainless Steel Tub

Inverter Direct Drive™ Motor

LoDecibel™ Quiet Operation (46 dBA)

ENERGY STAR® Qualified



Enjoy new ways to control your
home with LG smart appliances

- Get notifications when dishes are clean
- Monitor the cycle time from your smartphone
- Works with the LG SmartThinQ® app

SmartThinQ®

works with the
Google AssistantWORKS WITH
alexa

CAPACITY

| | |
|------------------------------|-------|
| Total Place Settings | 15 |
| Upper Rack Dish Height Limit | 7.1" |
| Lower Rack Dish Height Limit | 12.5" |

RACKS AND BASKETS

| | |
|---------------------------------------|--------------------------|
| Cutlery Baskets | Yes |
| Cup Rack | Yes |
| Fold Down Tines | Yes (Half Upper & Lower) |
| BPA-Free Nylon Coated Racks and Tines | Yes |
| Rack Handle | Yes (Upper) |
| EasyRack™ Plus System | Yes |
| Height Adjustable Upper Rack | Yes |
| 3rd Rack | Yes |

STYLE AND DESIGN

| | |
|------------------------|---------------------------------------------------------|
| Control Panel Location | Top Control |
| Electronic Controls | Fully Integrated Control Panel |
| Tub Material | NeveRust™ Stainless Steel |
| Handle | Bar Handle |
| Available Finishes | Smudge Resistant Stainless Steel, Black Stainless Steel |

FEATURES

| | |
|-----------------------------------|----------------------------------------------------------------------------------------------------|
| QuadWash® | Yes |
| Inverter Direct Drive Motor | Yes |
| LoDecibel™ Quiet Operation | 46 dBA |
| Number of Wash Cycles | 9 (Auto, Heavy, Delicate, Normal, Turbo, Download Cycle, Machine Clean, Rinse, Express) |
| Number of Options | 8 (Dual Zone, Half Load, Energy Saver, High Temp, Extra Dry, Delay Start, Control Lock, Night Dry) |
| Number of Spray Arms | 3 (Top, Upper, Lower) |
| SenseClean™ Wash System | Yes |
| Vario Wash | Yes |
| Detergent and Rinse-Aid Dispenser | Yes |
| Hybrid Condensing Drying System | Yes |
| End of Cycle Indicator | Yes (Beeper + END indication on display) |
| Hidden Water Heater | Yes |
| Safety Float Switch (Leaks) | Yes |
| Soil (Turbidity) Sensor | Yes |



| | |
|------------------------------------------------------------------------------------|-----|
| Tub Insulation (Damping Sheet, Sound Absorbing Material (felt), Base) | Yes |
| BPA-Free Nylon Coated Racks and Tines | Yes |
| Anti-Bacterial Treatment (Sump, Inner / Outer filter, Drain pump case, Drain hose) | Yes |
| Balanced Door | Yes |
| 3-Stage Filtration System | Yes |

SmartThinQ® SMART FEATURES

| | |
|------------------|-----------------------------------|
| Wi-Fi Enabled | Yes |
| Voice Activation | Yes |
| Works with | Google Assistant and Amazon Alexa |
| SmartDiagnosis™ | Yes |

POWER RATINGS

| | |
|------------------------|--------------|
| ENERGY STAR® Qualified | Yes |
| CEE Tier | 1 |
| Energy Use (kWh/Year) | 258 kWh/Year |
| Water Factor (WF) | 2.8 |

DIMENSIONS / CLEARANCES / WEIGHT

| | |
|-----------------------------------------|------------------------|
| Product Dimensions (in) (W x H x D) | 23.75" x 33.6" x 24.6" |
| Product Weight (lbs) | 79.6 lbs |
| Depth with Door Closed with Handle (in) | 24.6" |
| Depth with Door Open (in) | 50.5" |
| Carton Dimensions (in) (W x H x D) | 28" x 34.7" x 29.6" |
| Shipping Weight with Carton (lbs) | 91.7 lbs |

LIMITED WARRANTY

| | |
|---------------------------------------------------------|----------|
| Labour | 1 Year |
| Parts | 1 Year |
| Control Board, rack, stainless steel door liner and tub | 5 Years |
| Inverter Direct Drive Motor | 10 Years |

UPC CODES

| | |
|----------------------------------------------|--------------|
| LDT5678SS (Smudge Resistant Stainless Steel) | 048231341301 |
| LDT5678BD (Black Stainless Steel) | 772454071867 |

LG DISHWASHERS

LDT5678_

Top Control Wi-Fi Enabled Dishwasher
with QuadWash® and 3rd Rack

QUICK INSTALL & CLEARANCES

For full installation directions/clearances please refer to the corresponding User Manual and Installation Guide.

DIMENSIONS / CLEARANCES / WEIGHT

| | |
|-----------------------------------------|-----------------------------|
| Product Dimensions (in) (W x H x D) | 23 3/4" x 33 5/8" x 24 5/8" |
| Depth with Door Closed with Handle (in) | 24 3/5" |
| Depth with Door Open (in) | 50 1/2" |
| Carton Dimensions (in) (W x H x D) | 28" x 34 3/4" x 29 5/8" |

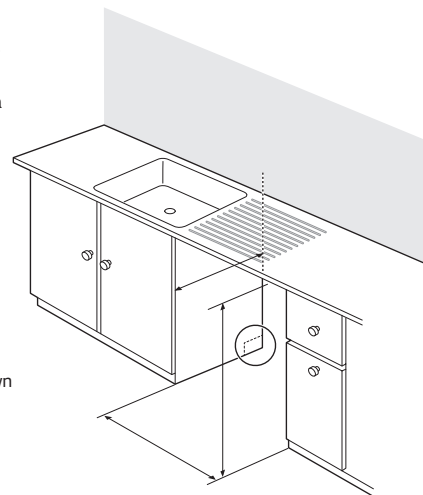
POWER RATINGS

| | |
|------------------------|--------------|
| ENERGY STAR® Qualified | Yes |
| CEE Tier | 1 |
| Energy Use (kWh/Year) | 258 kWh/Year |
| Water Factor (WF) | 2.8 |



PREPARING CABINET OPENING

- This dishwasher is designed to fit a standard dishwasher opening. An opening may be needed on both sides to route plumbing and electrical connections.
- Select a location as close to the sink as possible for easy connections to water and drain lines.
- To ensure proper drainage, install the dishwasher no more than 12 ft. from the sink.
- If installing the dishwasher in a corner, leave a minimum of 2" between the dishwasher and the adjacent wall.
- To allow for proper clearance of plumbing and electrical, use the template included with the literature to determine the clearance on the side of the cabinet where the cabinet meets the back wall. Using a 2 1/2" diameter hole saw, drill a hole in the target area as shown on the template.



⚠ WARNING

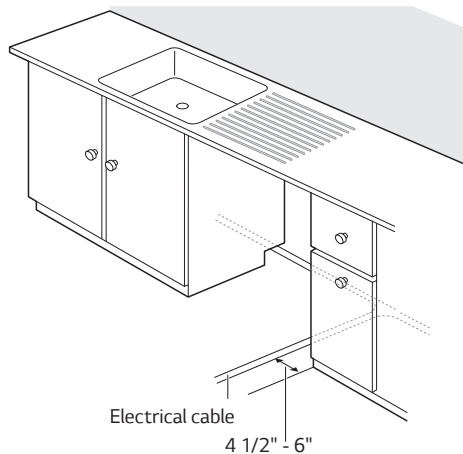
Don't use existing holes unless they are in the target area. Otherwise, the water supply and drain hose may be damaged by being crushed or kinked.

⚠ CAUTION

Failure to properly locate the hole for the water and drain lines may prevent the dishwasher from installing flush with the cabinets and could result in kinked or damaged lines. Installation damage is not covered by the warranty, and leaks caused by improper installation may result in property damage.

PREPARING ELECTRICAL WIRING

- Operate this appliance with the correct voltage as shown in your User Manual and on the rating plate. Connect it to a dedicated, properly grounded branch circuit which is protected by a time delay fuse. Connect the appliance using 3-wires, including a ground wire.
- If an outlet and other power connector are used, it should be in an accessible location adjacent to and not behind the dishwasher and within 4 ft. of the dishwasher's side.
- The wiring must be grounded properly. If in doubt, have it checked by a qualified electrician. Do not connect any other appliance to the same outlet.
- Route the wiring.
- Make sure the electrical cable is oriented in the right side channel.

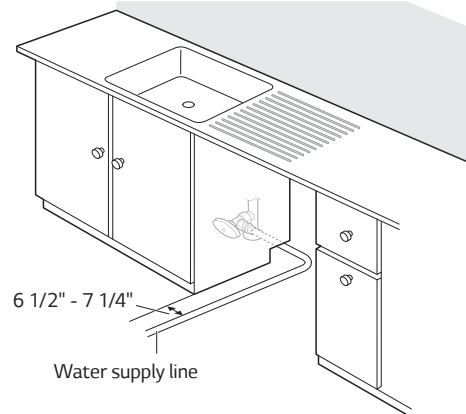


⚠ WARNING

- For personal safety, remove house fuse or open circuit breaker before installation.
- Do not use an extension cable or adapter with this dishwasher
- If you find any damage to the dishwasher, contact your retailer or contractor.

PREPARING WATER SUPPLY CONNECTION

- Make sure the house water supply is turned off before connecting the dishwasher water lines.
- Connect the dishwasher to a hot water supply with a temperature range between 120 °F (49 °C) and 149 °F (65 °C). This temperature range provides the best washing results and shortest cycle time. To prevent damage to dishes, the temperature should not exceed 149 °F (65 °C).
- When connecting the dishwasher water line, sealing tape or compound should be used on pipe threads to avoid leaks. Tape or compound should not be used on compression fittings.
- The water supply tube must be located in the left side channel.



NOTE

Use new hoses when connecting to the water supply. Do not reuse old hoses.

LREL6323_

6.3 cu. ft. Electric Convection Smart Range with Air-Fry

AirFry

Fan Convection

ThinQ® & Proactive Customer Care

9" & 12" Dual Elements

Self Clean & EasyClean®

Stainless Trim Cooktop

AVAILABLE COLORS



STAINLESS STEEL



PRINTPROOF™ BLACK STAINLESS STEEL

Enjoy new ways to control your home with LG smart appliances

- Install Setup Quick Check
- Preventative Alerts & Guidance
- Performance & Usage Reports

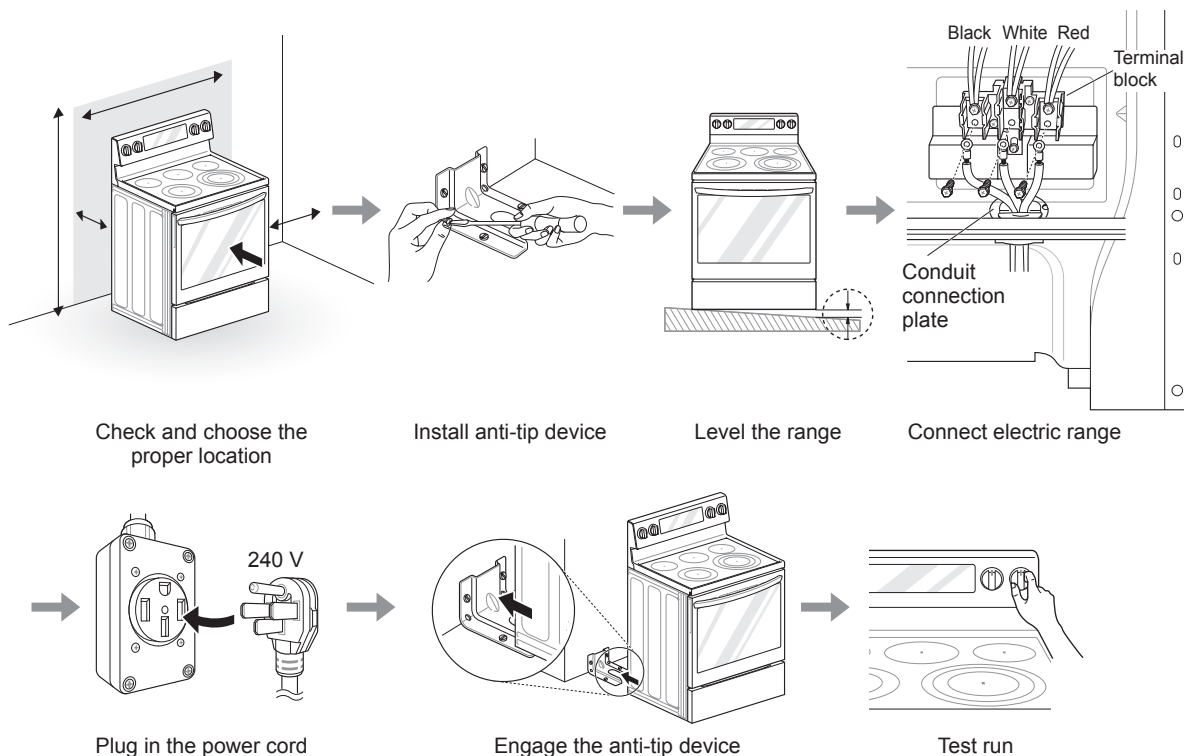
works with the
Google AssistantWORKS WITH
alexa

| CAPACITY | | DRAWER FEATURES | | DIMENSIONS/CLEARANCES/WEIGHTS | |
|------------------------------------|-------------------------------------------------------------------------------------|----------------------------------|----------------------------------------------------|-----------------------------------------------|-----------------------------|
| Oven Capacity (cu. ft.) | 6.3 cu.ft. | Type | Storage | Shipping Weight (lbs) | 198 |
| Storage Drawer Capacity (cu.ft.) | 0.8 (No Handle) | CONTROL | | Product Weight (lbs) | 164 |
| COOKTOP | | Cooktop Control Type | Front Control Knobs | Cabinet Width (in) | 30" |
| Type | Radiant | Oven Control Type | Keypad | Overall Depth (in) - including handle | 28 15/16" |
| No. of Radiant Elements | 5 | Display | White LED | Overall Height (in) | 47 5/16" |
| Element Size/Wattage - Left Rear | 1200 (6") | Language | English | Overall Width (in) | 29 7/8" |
| Element Size/Wattage - Right Rear | 1200 (6") | Clock | 12 hr or 24 hr (option) | Oven Interior Dimensions (in) (W x H x D) | 24 7/8" x 21 3/8" x 20" |
| Element Size/Wattage - Left Front | 3200 (9") / 1400 (6") (Ultra-Heat™) | Kitchen Timer | Yes | Height to Cooking Surface (in) | 36" |
| Element Size/Wattage - Right Front | 3000 (12") / 1700 (9") | Timed Cook | Yes | Drawer Dimensions (in) (W x H x D) | 22 3/16" x 4 1/2" x 16 3/8" |
| Center (Warming Zone) | 100 (7") | Temperature Unit of Measure | Fahrenheit / Celsius | Carton Dimensions (in) (W x H x D) | 31 1/2" x 51" x 30 17/32" |
| Hot Surface LED Indicator | Yes | Cooking Complete Reminder Volume | Beeper (Hi, Lo, Off) | POWER/RATINGS | |
| OVEN FEATURES | | Certified Sabbath mode | Yes | Amp Rating at 208V | 48.6A |
| Broil Element (Watt) | Sheath 4200 / 6 Pass | APPEARANCE | | Amp Rating at 240V | 56.3A |
| Oven Bake Element Wattage | 3400 | All Available Colors | Stainless Steel, PrintProof™ Black Stainless Steel | KW Rating at 208V | 10.1kW |
| Convection (Watt) | Sheath 700W / Sheath 3400W (6 Pass Hidden Bake) | Knobs | Stainless Steel, PrintProof™ Black Stainless Steel | KW Rating at 240V | 13.5kW |
| Convection Fan | Single Speed | Handle | Stainless Steel, PrintProof™ Black Stainless Steel | Required Power Supply (amp) | 40A |
| Convection Type | Fan Convection | PrintProof | Yes (PrintProof™ Black Stainless Steel) | ACCESSORIES | |
| Oven Modes | Bake, Broil, Air Fry, Easy&Self Clean, Convection Bake, Convection Roast, Keep Warm | Oven Door Feature | WideView™ Window (Smog Glass) | Standard Rack | 2 |
| Oven Control Features | Keypad | Cooktop Trim | Stainless Steel | Spray Bottle | Yes |
| Convection Conversion | Yes | SMART FEATURES | | Scouring Pad | Yes |
| EasyClean® | Yes (10 min) | Wi-Fi Connectivity | Yes | LIMITED WARRANTY | |
| Self Clean | Yes | ThinQ® | Yes | Parts & Labor | 1 Year |
| Oven Light | 1 Light | Works with | Google Assistant & Amazon Alexa | UPC CODES | |
| No. of Rack Positions | 7 | SmartDiagnosis™ | Yes | LREL6323S (Stainless Steel) | 048231341431 |
| Door Lock | Yes | 3rd Party Recipe App | Sidechef, Innit, Drop, Tovala | LREL6323D (PrintProof™ Black Stainless Steel) | 048231341448 |
| Automatic Safety Shut-Down | After 12 Hours | Proactive Customer Care Service | Yes | | |

INSTALLATION

Installation Overview

Please read the following installation instructions first after purchasing this product or transporting it to another location.



Product Specifications

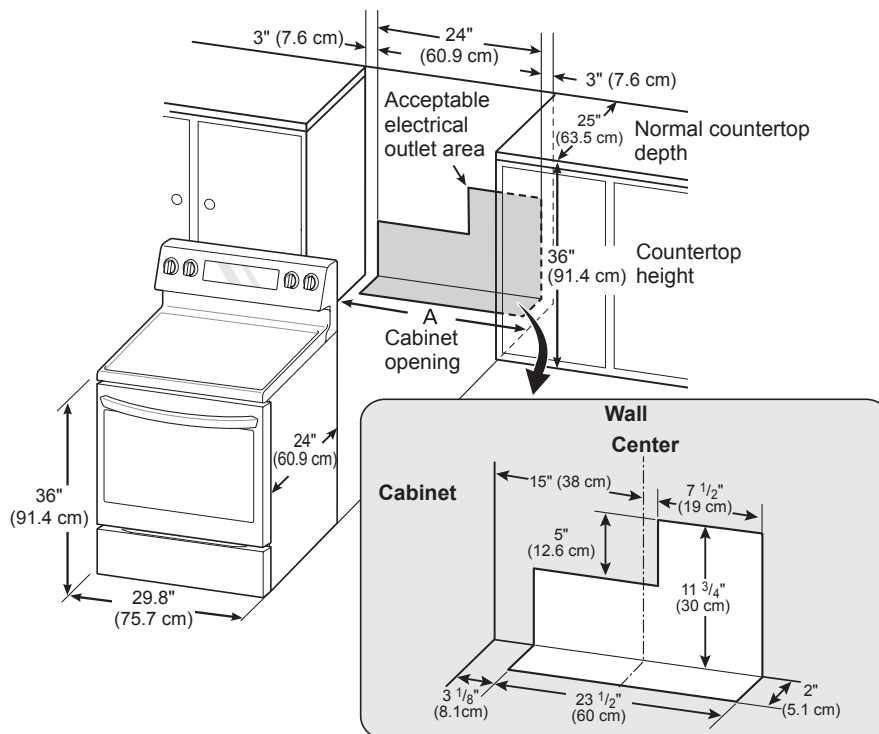
The appearance and specifications listed in this manual may vary due to constant product improvements.

| Oven Range Models | LREL6325** | LREL6323** | LREL6321** |
|----------------------------------|-----------------------------------------------------------------------------------------------------------------------------------------------------------------------------------|---------------------|---------------------------------------|
| Net weight | 139.6 lb (63.3 kg) | 136.2 lb (61.78 kg) | 130.5 lb (59.2 kg) |
| Electrical requirements | 120/240 V: 12.9 kW, 120/208 V: 9.7 kW | | 120/240 V: 13.1 kW, 120/208 V: 9.8 kW |
| Description | Electric Single Oven Range | | |
| Exterior Dimensions | 29 4/5" (W) x 46 1/2" (H) x 26 1/2" (D) (D with door closed and excluding door handle) 75.9 cm (W) x 118.1 cm (H) x 67.4 cm (D) (D with door closed and excluding door handle) | | |
| Height to cooking surface | 36" (91.3 cm) | | |
| Total capacity | 6.3 cu.ft. | | |

Dimensions and Clearances

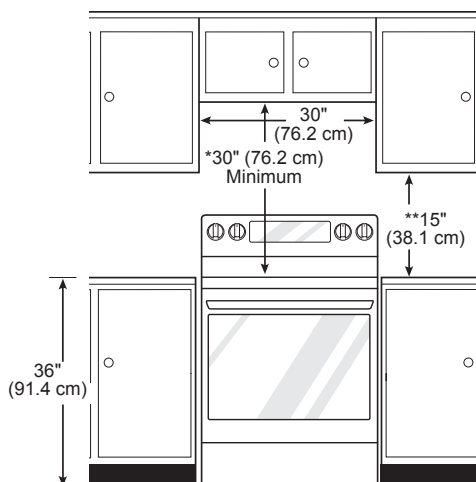
NOTE

Save for the use of the local electrical inspector.



A = 30" (76.2 cm) For U.S.A
= 30" (76.2 cm) ~ 31" (78.7 cm) For CANADA

For installation in Canada, a free-standing range is not to be installed closer than $\frac{15}{32}$ " (12 mm) from any adjacent surface.



Minimum Dimensions

* 30" (76.2 cm) minimum clearance between the top of the cooking surface and the bottom of an unprotected wood or metal cabinet; or 24" (60.9 cm) minimum when bottom of wood or metal cabinet is protected by not less than $\frac{1}{4}$ " (6.4 cm) flame retardant millboard covered with not less than no. 28 MSG sheet steel, 0.015" (0.381 mm) stainless steel, 0.024" (0.610 mm) aluminum or 0.020" (0.508 mm) copper.

** 15" (38.1 cm) minimum between countertop and adjacent cabinet bottom.