



CONSTRUCTION SUMMARY

80N Right - 1 - The Sonoma 2 (SD25-2) Elev C

Extras at Time of Sale

Note:

CONSTRUCTION

Inv.123 1 - ROUGH IN GARAGE DOOR IN CASE GRADE DOES NOT PERMIT.

Line851 Note:

13Feb21 / 3Mar21

STAIRS AND RAILING

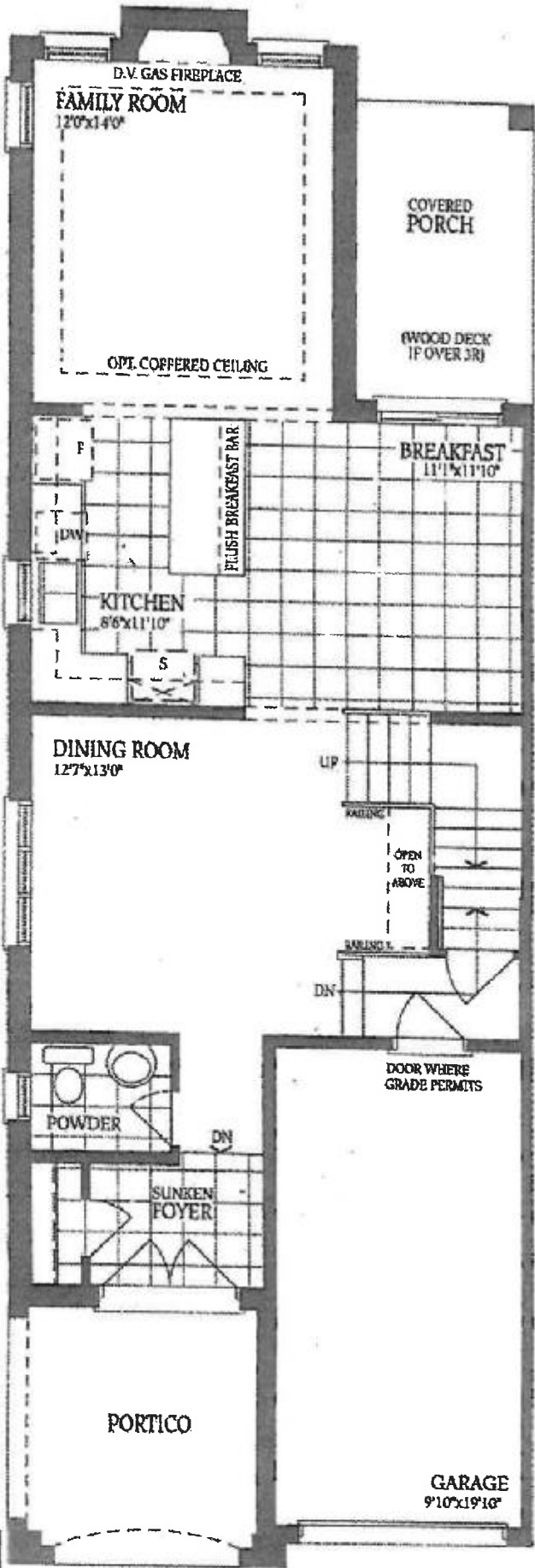
Inv.123 1 - UPGRADE 1 - WROUGHT IRON STAIRCASE - FROM MAIN FLOOR TO SECOND.

Line849 Note:

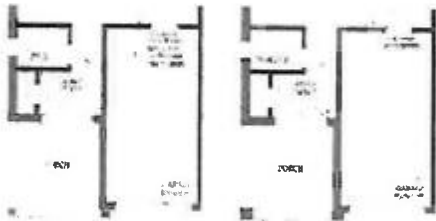
13Feb21 / 3Mar21

The Sonoma 2  
ELEVATION A - 1895 SQ.FT.  
ELEVATION B - 1893 SQ.FT.  
ELEVATION C - 1904 SQ.FT.

30 right



Ground Floor - Elevation A



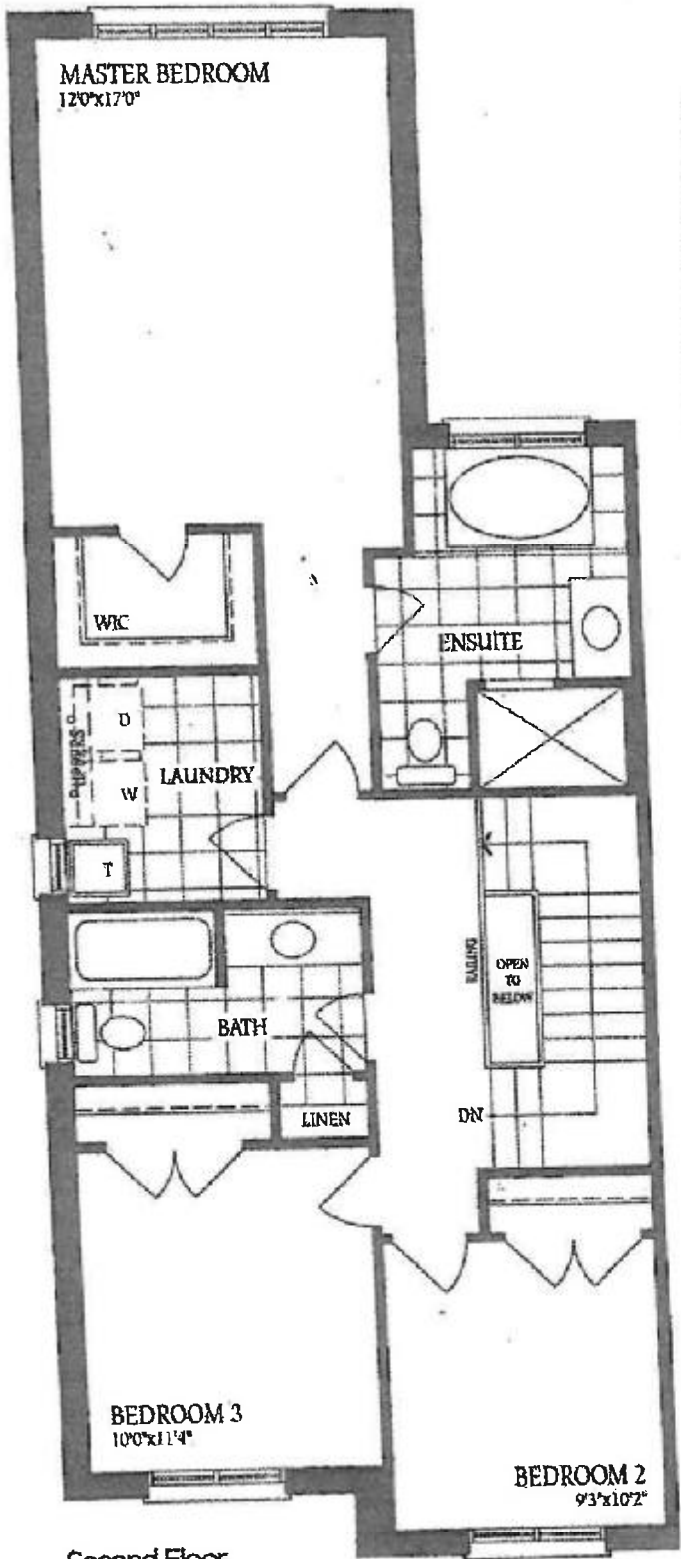
Ground Floor - Elevation B      Ground Floor - Elevation C & C-Mod

DS  
af

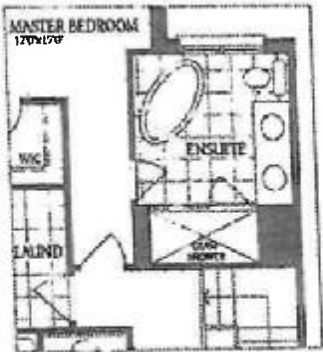
The **Sonoma 2**

ELEVATION A - 1895 SQ.FT.  
ELEVATION B - 1893 SQ.FT.  
ELEVATION C - 1904 SQ.FT.

*80Righ*



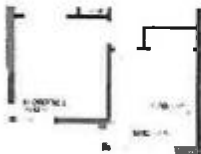
Second Floor  
Elevation A



Optional Second Floor  
with Alternate Ensuite



Second Floor  
Elevation B



Second Floor  
Elevation C



Second Floor  
Elevation C - Mod

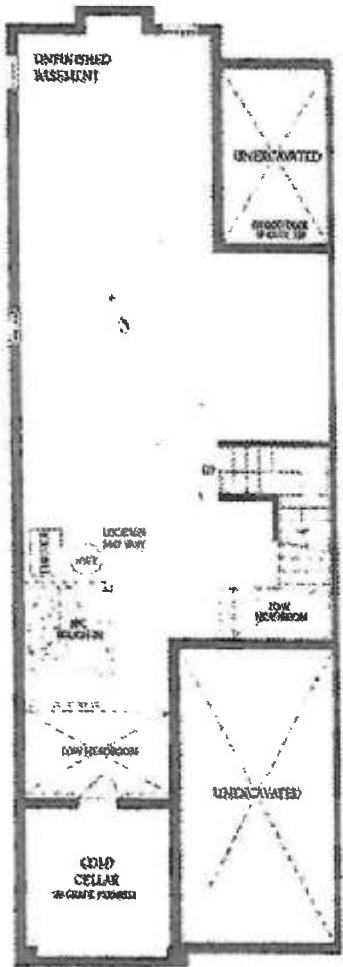
Total for Elev. C-Mod:  
1915 sq.ft.

DS  
*af*

# The Sonoma 2

ELEVATION A - 1895 SQ.FT.  
ELEVATION B - 1893 SQ.FT.  
ELEVATION C - 1904 SQ.FT.

80 Right



Basement

DS  
[Signature]