



CONSTRUCTION SUMMARY

140N Right - 1 - The Sonoma 3 (SD25-3) Elev B

Extras at Time of Sale

Note:

CONSTRUCTION

Inv.114 1 - ROUGH IN GARAGE DOOR - IN CASE GRADE DOES NOT PERMIT - ROUGH IN ONLY - NO DOOR PROVIDED.

Line795 Note:

4Feb21 / 25Feb21

ELECTRICAL

Inv.114 1 - ELECTRICAL - EXTRA INTERIOR CEILING OUTLET ROUGH-IN - NO FIXTURE - ON NEW SWITCH

Line802 Note: over breakfast bar - centered

4Feb21 / 25Feb21

PAINT AND STAIN

Inv.114 1 - STAIN STAIRCASE TO MATCH HARDWOOD (WITH UPGRADE 1 WROUGHT IRON STAIRCASE)

Line805 Note:

4Feb21 / 25Feb21

PLUMBING

Inv.114 1 - PLUMBING - WATERLINE FOR ICE MAKER HOOK UP - INCLUDES VALVE

Line800 Note:

4Feb21 / 25Feb21

STAIRS AND RAILING

Inv.114 1 - UPGRADE 1 - WROUGHT IRON STAIRCASE - MAIN FLOOR TO SECOND FLOOR

Line804 Note:

4Feb21 / 25Feb21

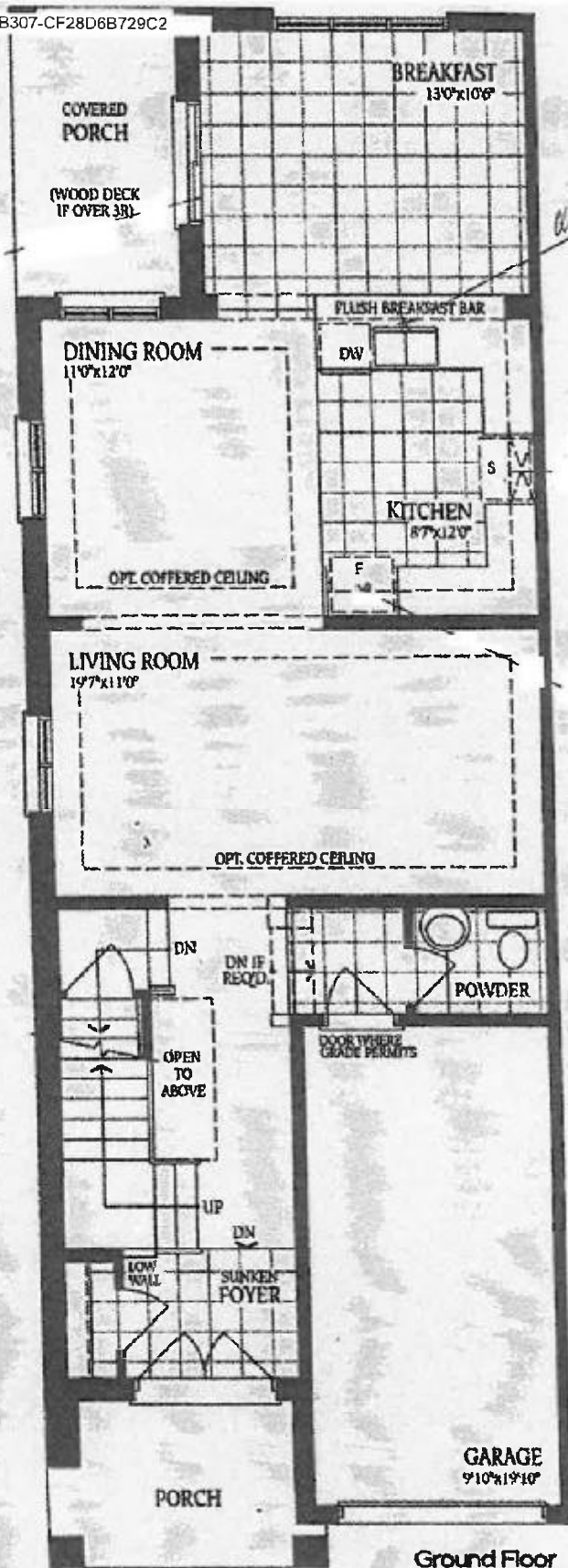
TRIM CARPENTRY

Inv.114 1 - 8FT DOORS AND ARCHWAYS - THROUGH OUT MAIN FLOOR

Line798 Note:

4Feb21 / 25Feb21

the Schmitts
 ELEVATION A - 2062 SQ.FT.
 ELEVATION B - 2070 SQ.FT.
 ELEVATION C - 2056 SQ.FT.



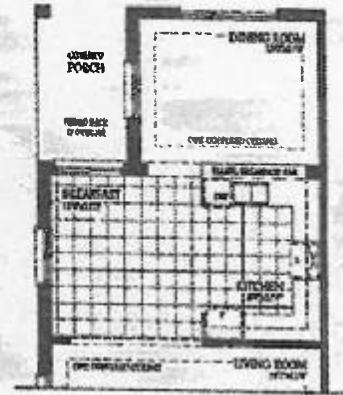
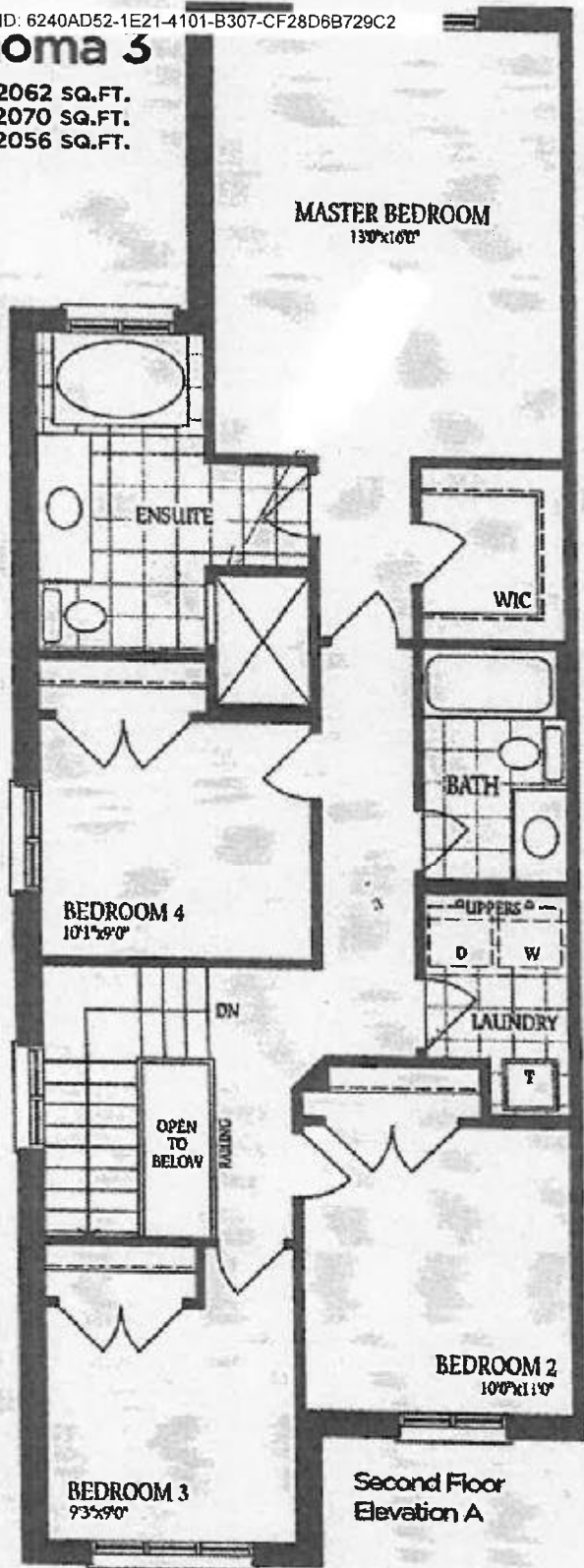
Lot 140 Right

DS
 L A

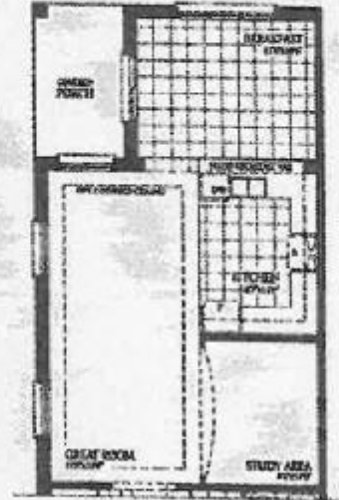


The Sonoma 3

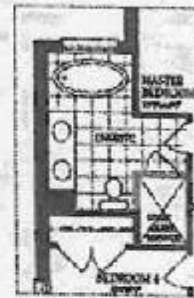
ELEVATION A - 2062 SQ.FT.
ELEVATION B - 2070 SQ.FT.
ELEVATION C - 2056 SQ.FT.



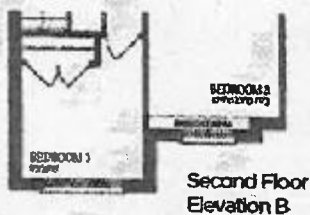
Optional Ground Floor
with Alternate Layout 1



Optional Ground Floor
with Alternate Layout 2



Optional
Second Floor
with Alternate
Ensuite



Second Floor
Elevation B



Second Floor
Elevation C



Second Floor
Elevation C - Mod.

Total for Elev. C-Mod:
2066 sq.ft.

Lot 140 right

DS
L A

The Sonoma 3

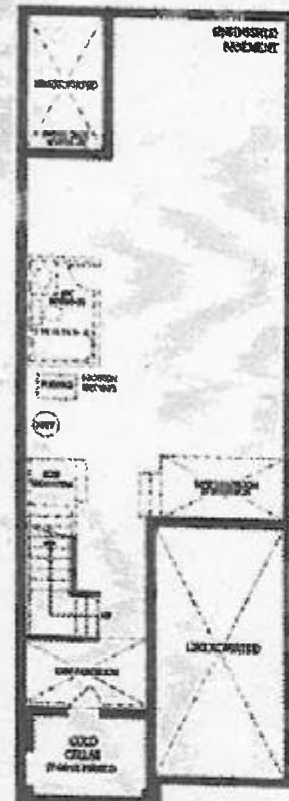
ELEVATION A - 2062 SQ.FT.
ELEVATION B - 2070 SQ.FT.
ELEVATION C - 2056 SQ.FT.



Basement
Elevation B



Basement
Elevation C & C-Mod.



Basement
Elevation A

dot 140 right.

LA