



CONSTRUCTION SUMMARY

153N Left - 1 - The Sonoma 2 (SD25-2) Elev B

Extras at Time of Sale

Note:

CONSTRUCTION

Inv.116	1 - GARAGE MAN DOOR - ROUGH IN GARAGE DOOR- IN CASE GRADE DOES NOT PERMIT - ROUGH IN ONLY - NO DOOR PROVIDED.
Line811	Note:
6Feb21 / 22Feb21	
Inv.116	1 - OPTIONAL SECOND FLOOR WITH ALTERNATE ENSUITE
Line819	Note:
6Feb21 / 22Feb21	

ELECTRICAL

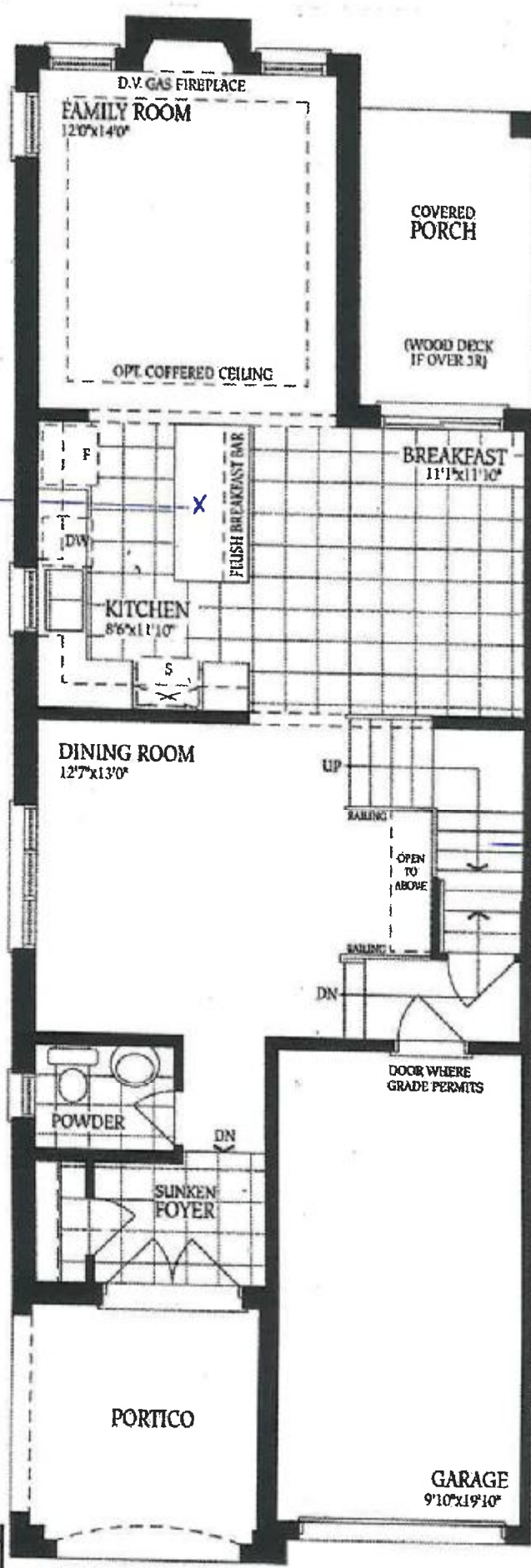
Inv.116	1 - ELECTRICAL - EXTRA INTERIOR CEILING OUTLET ROUGH-IN - NO FIXTURE - ON NEW SWITCH- OVER BREAKFAST BAR CENTERED-AS PER SKETCH
Line834	Note:
6Feb21 / 22Feb21	

STAIRS AND RAILING

Inv.116	1 - UPGRADE RAILING - MAIN TO SECOND FLOOR - UPGRADE 1- WROUGHT IRON
Line831	Note: PRICE DOES NOT INCLUDE STAIN
6Feb21 / 22Feb21	

The Sonoma 2

ELEVATION A - 1895 SQ.FT.  
ELEVATION B - 1893 SQ.FT. - 153 Left  
ELEVATION C - 1904 SQ.FT.



R/I outlet centered  
P.D.  
A.A

UP 1 wrought iron  
P.D.  
A.A

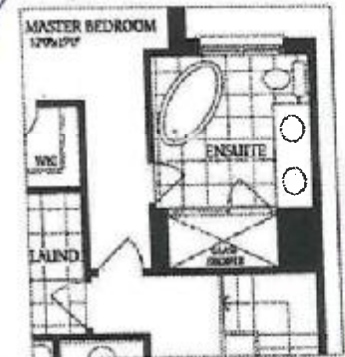
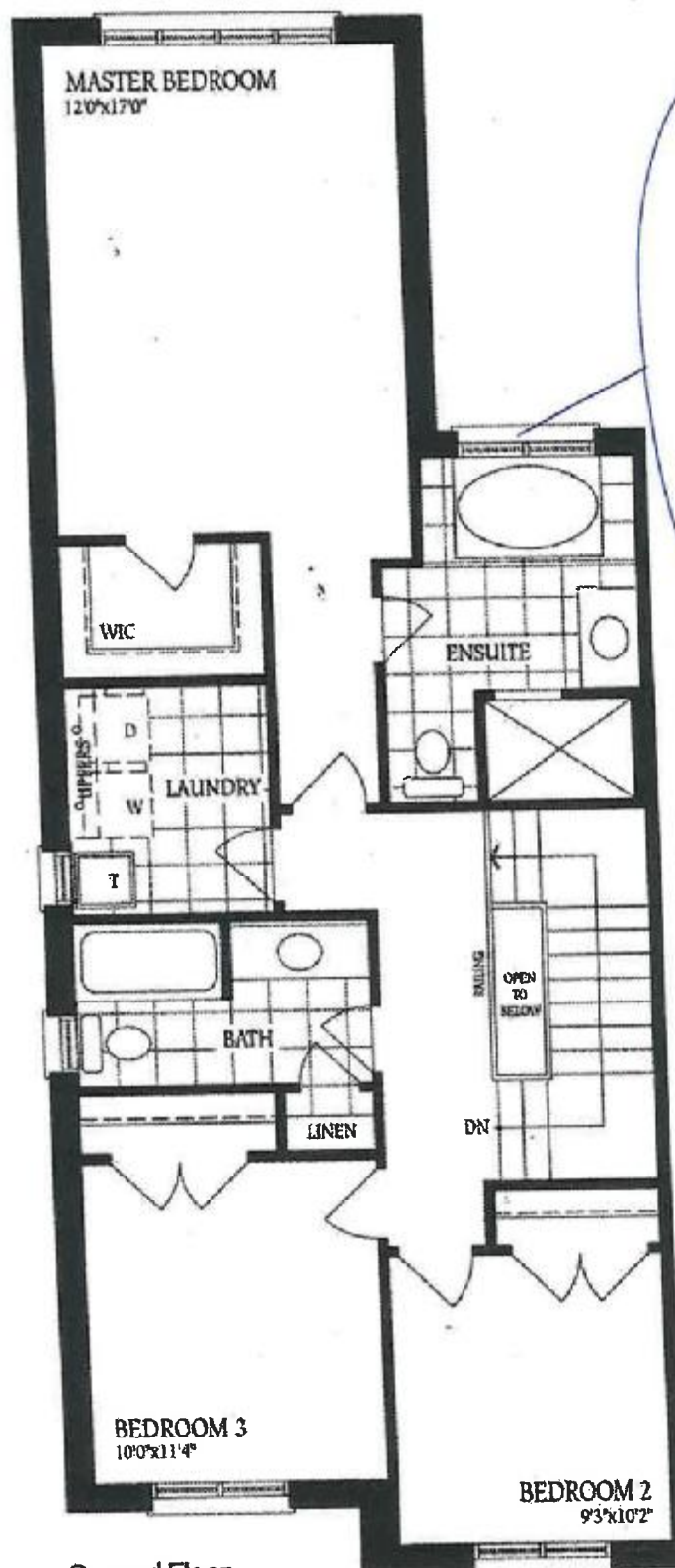


Ground Floor - Elevation A

Ground Floor - Elevation B      Ground Floor - Elevation C & C-Mod

# The Sonoma 2

ELEVATION A - 1895 SQ.FT.  
 ELEVATION B - 1893 SQ.FT. - 153 Left  
 ELEVATION C - 1904 SQ.FT.



Optional Second Floor  
with Alternate Ensuite

RR AA

Second Floor  
Elevation A



Second Floor  
Elevation B



Second Floor



Second Floor  
Elevation C - Mod.

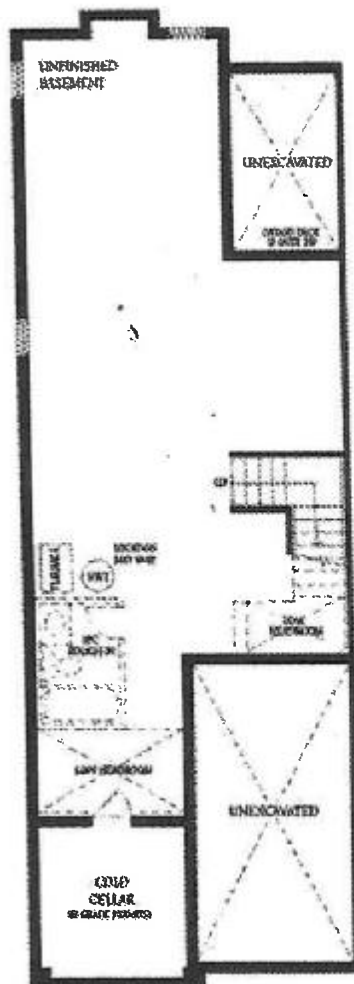
Total for Elev. C-Mod:  
1915 sq.ft.

# The Sonoma 2

ELEVATION A - 1895 SQ.FT.

ELEVATION **(B)** - 1893 SQ.FT. - 153 Left

ELEVATION C - 1904 SQ.FT.



Basement

P-2  
A-A