



CONSTRUCTION SUMMARY

80N Left - 1 - The Sonoma 2 (SD25-2) Elev C

Extras at Time of Sale

Note:

CEILINGS

Inv.117	1 - SMOOTH CEILINGS - THROUGH OUT MAIN FLOOR
Line817	Note:
6Feb21 / 22Feb21	

Inv.117	1 - SMOOTH CEILINGS - THROUGH OUT SECOND FLOOR
Line818	Note:
6Feb21 / 22Feb21	

CONSTRUCTION

Inv.117	1 - GARAGE MAN DOOR - ROUGH IN GARAGE DOOR - IN CASE GRADE DOES NOT PERMIT.
Line810	Note: GRADE DOES NOT PERMIT - ROUGH IN ONLY - NO DOOR PROVIDED
6Feb21 / 22Feb21	

Inv.117	1 - OPTIONAL SECOND FLOOR WITH ALTERNATE ENSUITE
Line814	Note:
6Feb21 / 22Feb21	

PAINT AND STAIN

Inv.117	1 - STAIN STAIRCASE TO MATCH HARDWOOD/LAMINATE - (WITH WROUGHT IRON STAIRCASE)
Line816	Note:
6Feb21 / 22Feb21	

STAIRS AND RAILING

Inv.117	1 - UPGRADE RAILING - MAIN TO SECOND FLOOR - UPGRADE 1- WROUGHT IRON
Line815	Note:
6Feb21 / 22Feb21	

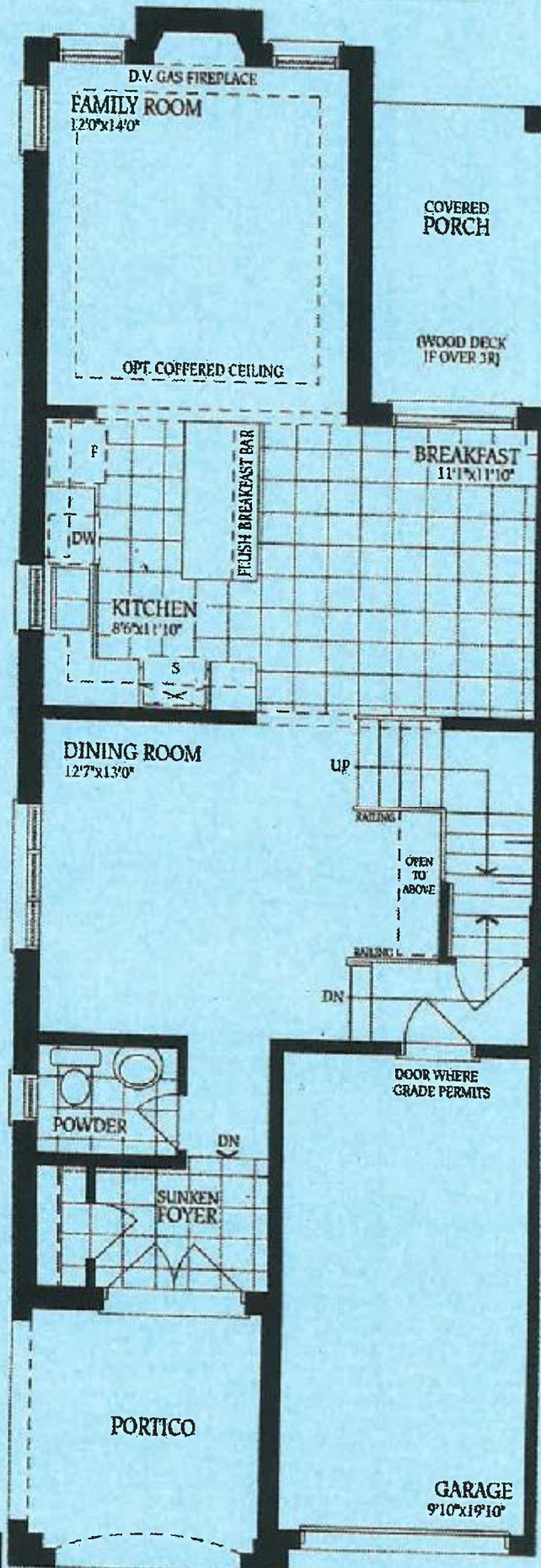
The Sonoma 2

ELEVATION A - 1895 SQ.FT.

ELEVATION B - 1893 SQ.FT.

ELEVATION C - 1904 SQ.FT.

- 30 left - C



UP 1 Wrought Iron
stair staircase
to match

*Smooth ceilings
on main floor*



Ground Floor - Elevation B



Ground Floor - Elevation C & C-Mod

Ground Floor - Elevation A

DS
PC

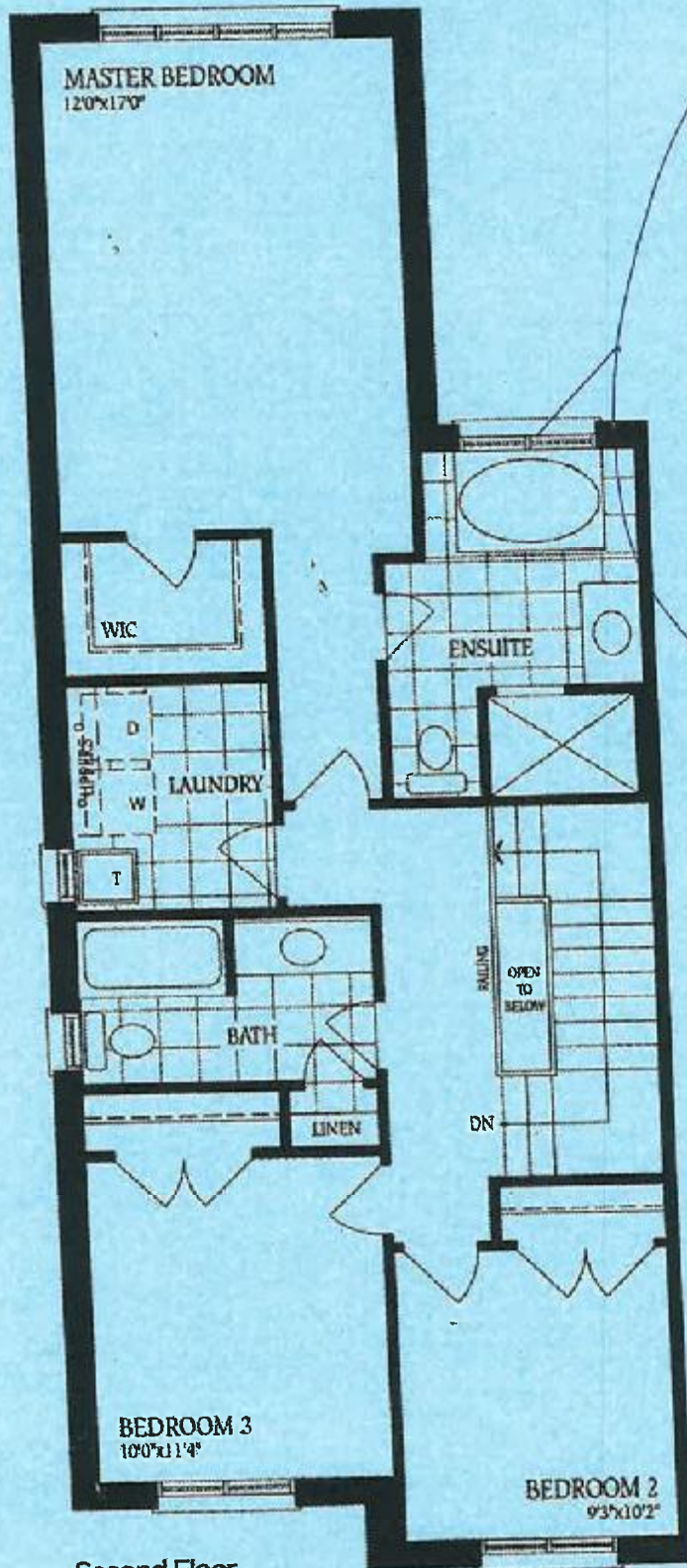
DS
OB

The Sonoma 2

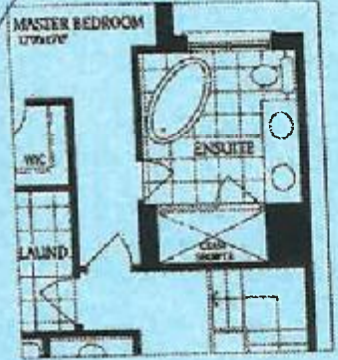
ELEVATION A - 1895 SQ.FT.

ELEVATION B - 1893 SQ.FT.

ELEVATION C - 1904 SQ.FT. - 80 left - C



Second Floor
Elevation A



Optional Second Floor
with Alternate Ensuite

DS
PC DS
OB

* smooth ceilings
on second floor *

DS
OB DS
PC



Second Floor
Elevation B



Second Floor
Elevation C - Mod.



Second Floor
Elevation C - Mod.

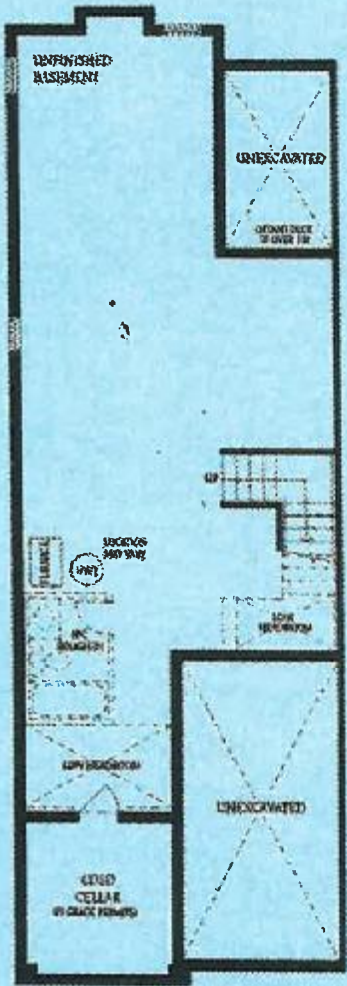
Total for Elev. C-Mod:
1915 sq.ft.

The Sonoma 2

ELEVATION A - 1895 SQ.FT.

ELEVATION B - 1893 SQ.FT.

ELEVATION C - 1904 SQ.FT. - 80 left - c



Basement