



CONSTRUCTION SUMMARY

87N Left - 1 - The Sonoma 2 (SD25-2) Elev C

Extras at Time of Sale

Note:

CONSTRUCTION

Inv.121	1 - GARAGE MAN DOOR ROUGH IN - IN CASE GRADE DOES NOT PERMIT
Line844	Note: ROUGH IN ONLY - NO DOOR PROVIDED
13Feb21 / 17Feb21	

Inv.131	1 - OPTIONAL SECOND FLOOR WITH ALTERNATE ENSUITE - AS PER SKETCH
Line930	Note:
20Feb21 / 22Feb21	

HEATING AND AIR CONDITIONING

Inv.121	1 - HEATING AND AIR CONDITIONING - ROUGH IN GAS LINE - PER APPLIANCE - STOVE
Line846	Note:
13Feb21 / 17Feb21	

PLUMBING

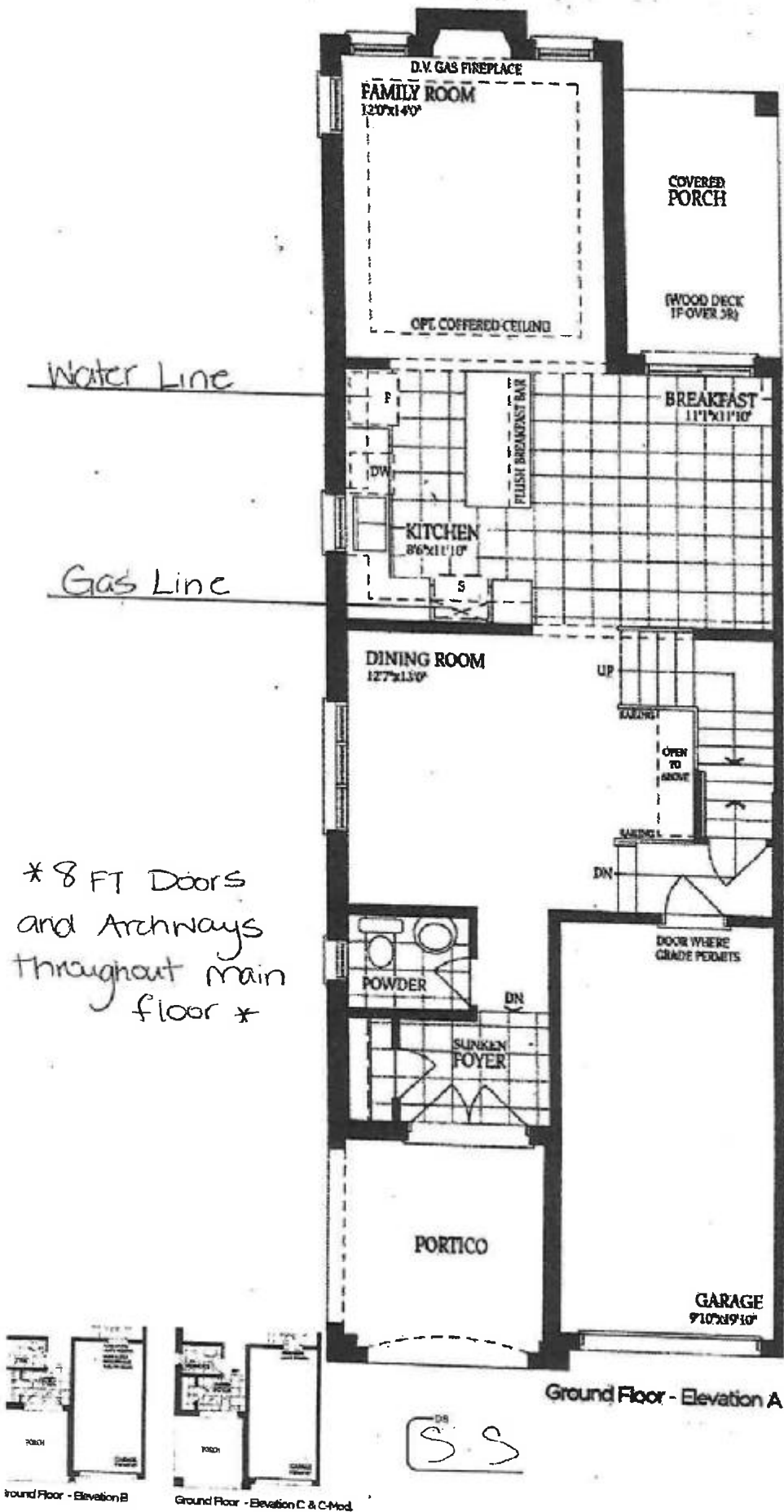
Inv.121	1 - PLUMBING - WATERLINE FOR ICE MAKER HOOK UP - INCLUDES VALVE - FRIDGE
Line847	Note:
13Feb21 / 17Feb21	

TRIM CARPENTRY

Inv.121	1 - 8 FOOT DOORS AND ARCHWAYS - THROUGHOUT MAIN FLOOR
Line845	Note: DUE TO CONSTRUCTION SPECIFIC - TO INCREASE BASEMENT DOOR MIGHT NOT BE POSSIBLE.
13Feb21 / 17Feb21	

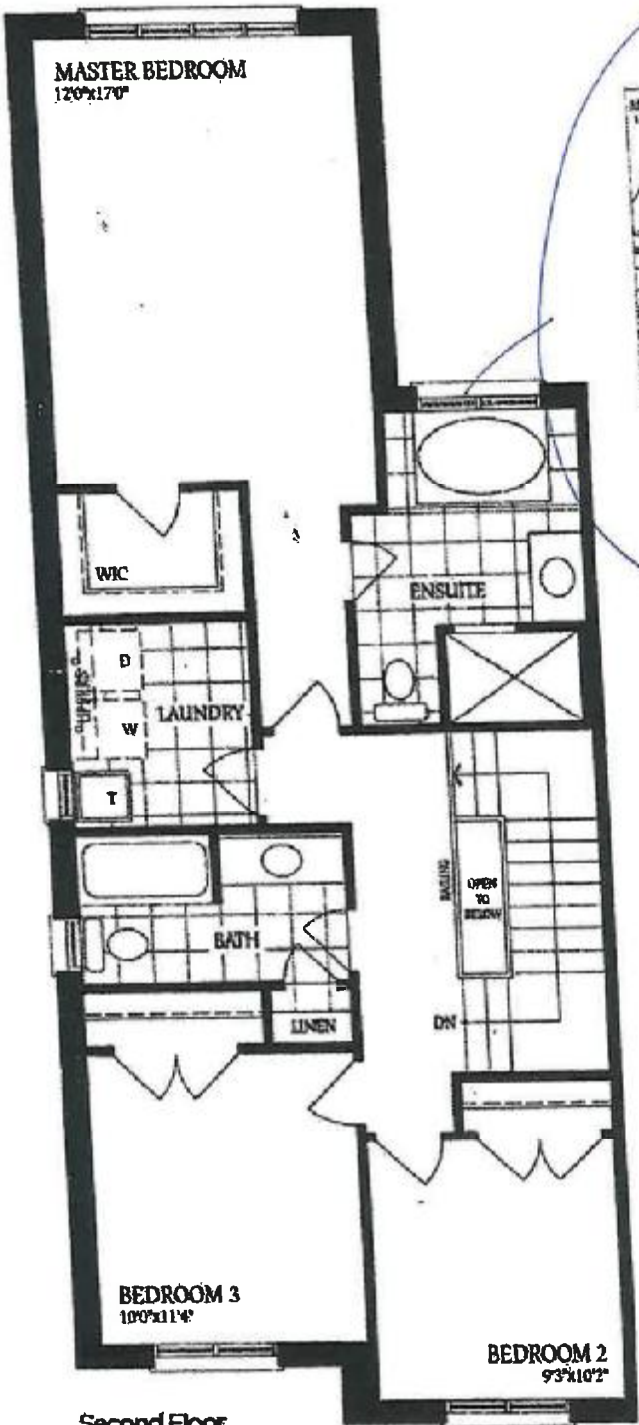
The Sonoma 2

ELEVATION A - 1895 SQ.FT.
ELEVATION B - 1893 SQ.FT.
ELEVATION C - 1904 SQ.FT. - 87 Left

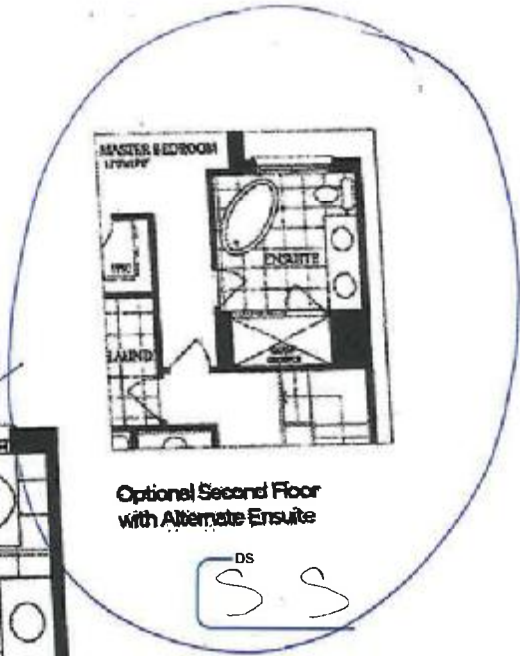


The Sonoma 2

ELEVATION A - 1895 SQ.FT.
ELEVATION B - 1893 SQ.FT.
ELEVATION C - 1904 SQ.FT. - 87 Left



Second Floor
Elevation A



Optional Second Floor
with Alternate Ensuite

DS
S S



Second Floor
Elevation B



Second Floor
Elevation C - Mod



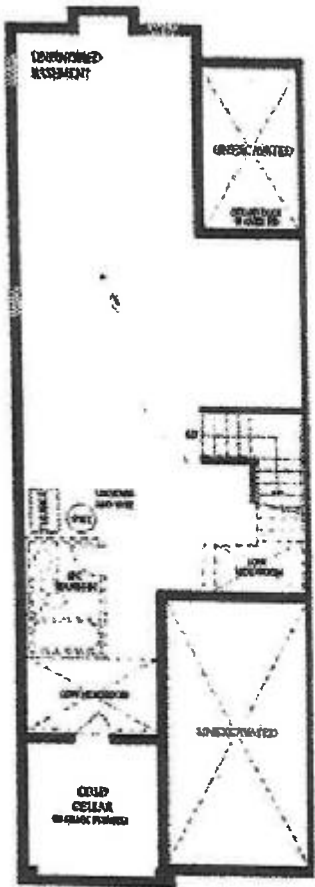
Second Floor
Elevation C - Mod

Total for Elev. C-Mod:
1875 sq.ft.

DS
S S

The Sonoma 2

ELEVATION A - 1895 SQ.FT.
ELEVATION B - 1893 SQ.FT.
ELEVATION C - 1904 SQ.FT. -87 Left



Basement

SS