



CONSTRUCTION SUMMARY

82N Right - 1 - The Sonoma 1 (SD25-1) Elev A

Extras at Time of Sale

Note:
-------

CONSTRUCTION

Inv.120	1 - GARAGE DOOR - ROUGH IN GARAGE - IN CASE GRADE DOES NOT PERMIT.
Line828	Note:
7Feb21 / 17Feb21	

MISCELLANEOUS

Inv.74	1 - 5 APPLIANCES - STAINLESS STEEL: FRIDGE, RANGE, DISHWASHER AND HOOD FAN – WHITE: WASHER AND DRYER. FROM VENDORS STANDARD LINE.
Line539	Note: AS PER BONUS
17Jan21 / 9Feb21	

PAINT AND STAIN

Inv.120	1 - STAIN STAIRCASE TO MATCH HARDWOOD/LAMINATE - (WITH WROUGHT IRON STAIRCASE)
Line830	Note:
7Feb21 / 17Feb21	

STAIRS AND RAILING

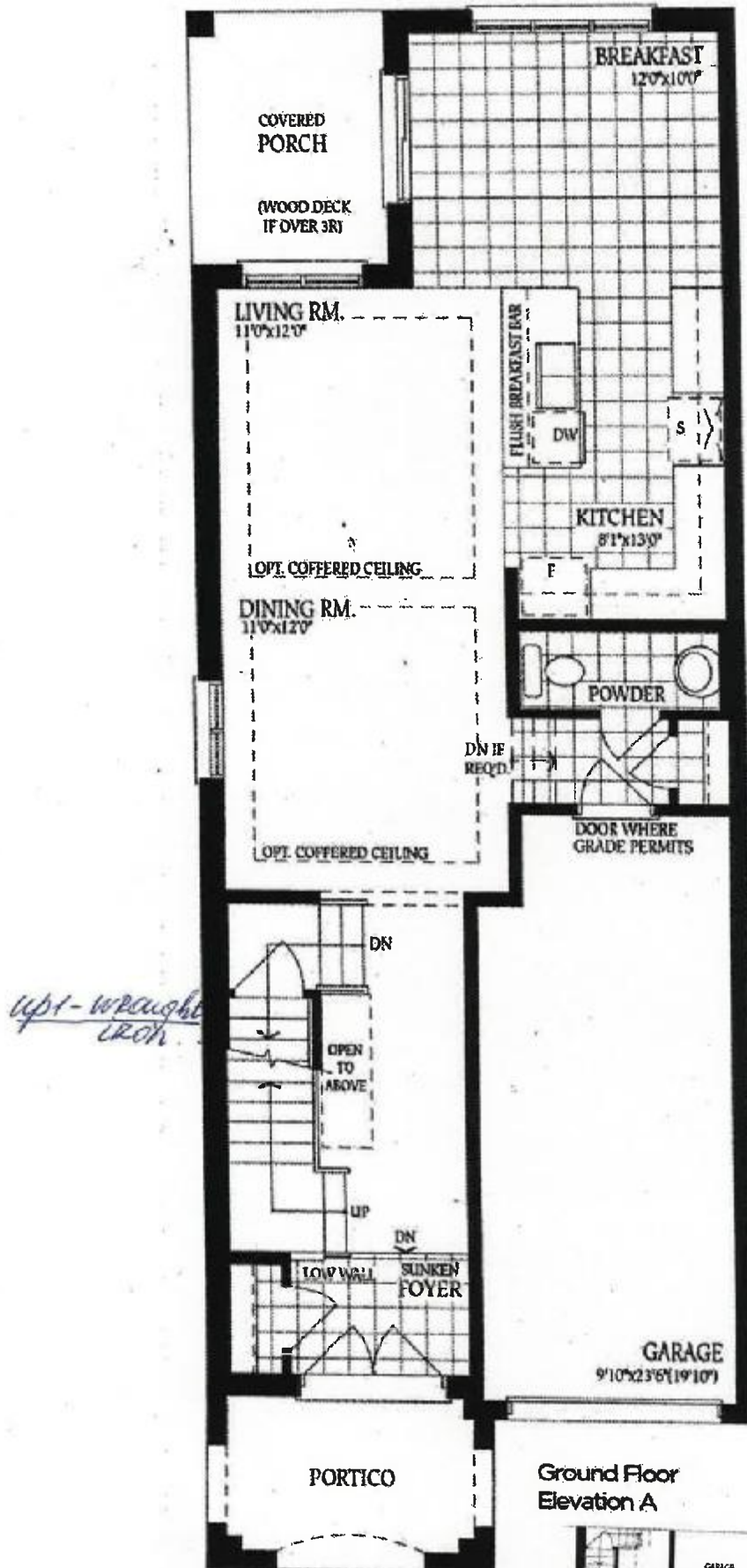
Inv.120	1 - UPGRADE RAILING - MAIN TO SECOND FLOOR - UPGRADE 1- WROUGHT IRON (NATURAL FINISH)
Line829	Note:
7Feb21 / 17Feb21	

# The Sonoma 1

ELEVATION A - 1770 SQ.FT. = *82 Right*

ELEVATION B - 1769 SQ.FT.

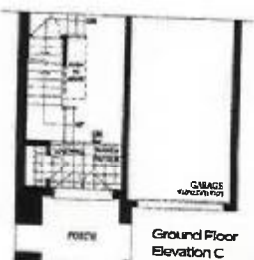
ELEVATION C - 1766 SQ.FT.



Ground Floor  
Elevation A



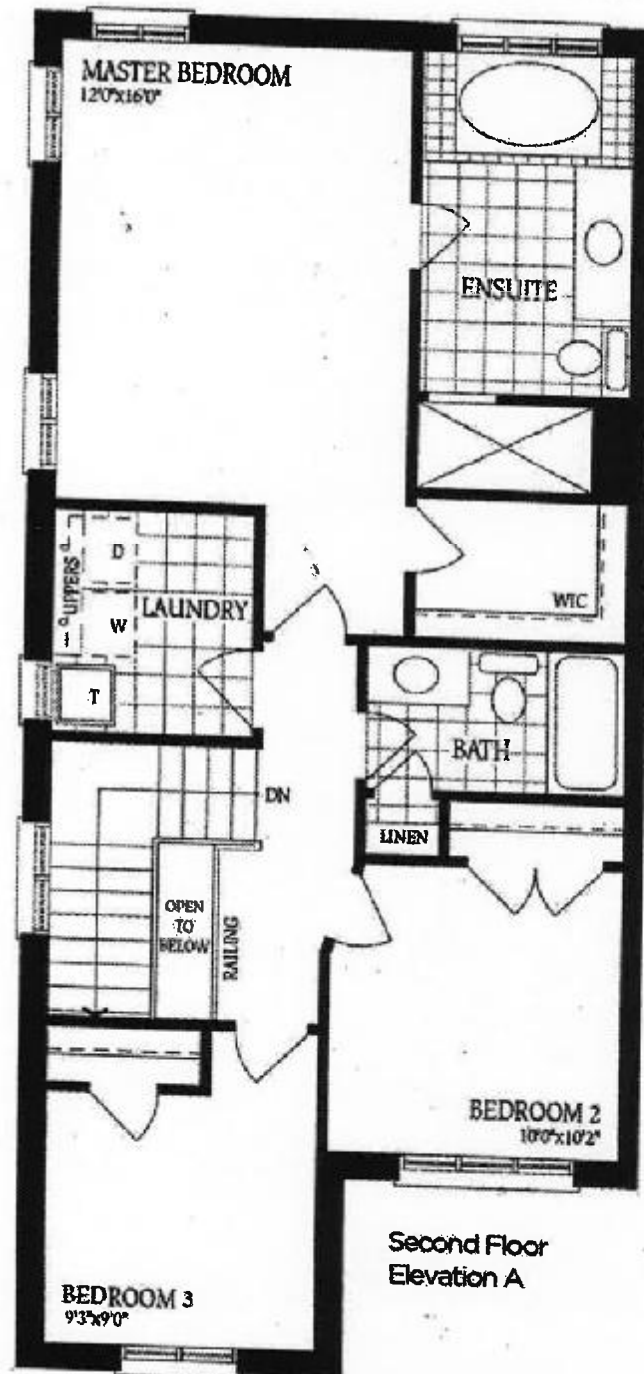
Ground Floor  
Elevation B



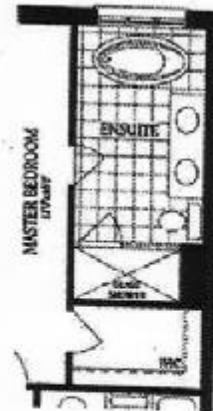
Ground Floor  
Elevation C

# The Sonoma 1

ELEVATION A - 1770 SQ.FT. - *82 Right*  
 ELEVATION B - 1769 SQ.FT.  
 ELEVATION C - 1766 SQ.FT.



Second Floor  
Elevation A



Optional Second Floor  
with Alternate Ensuite



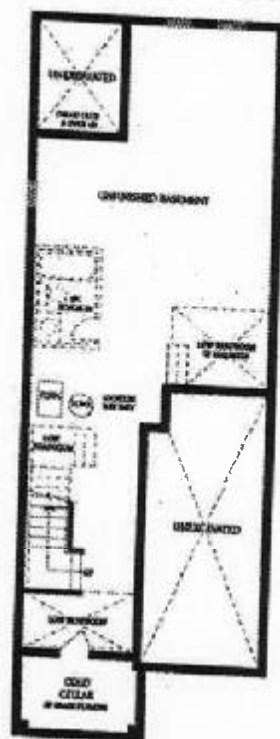
Second Floor  
Elevation B



Second Floor  
Elevation C

# The Sonoma 1

ELEVATION A - 1770 SQ.FT. - *82 Right*  
ELEVATION B - 1769 SQ.FT.  
ELEVATION C - 1766 SQ.FT.



Basement