



CONSTRUCTION SUMMARY

153N Right - 1 - The Sonoma 2 (SD25-2) Elev B

Extras at Time of Sale

Note:

CONSTRUCTION

| | |
|-------------------|--|
| Inv.85 | 1 - 8FT INTERIOR DOORS AND ARCHWAYS THROUGH OUT MAIN FLOOR |
| Line555 | Note: |
| 25Jan21 / 17Feb21 | |
| Inv.85 | 1 - GARAGE DOOR - ROUGH IN GARAGE DOOR IN CASE GRADE DOES NOT PERMIT |
| Line852 | Note: |
| 25Jan21 / 17Feb21 | |

ELECTRICAL

| | |
|-------------------|--|
| Inv.85 | 1 - ELECTRICAL - EXTRA INTERIOR CEILING OUTLET ROUGH-IN - NO FIXTURE - ON NEW SWITCH |
| Line793 | Note: CENTERED OVER BREAKFAST BAR - AS PER SKETCH. |
| 25Jan21 / 17Feb21 | |

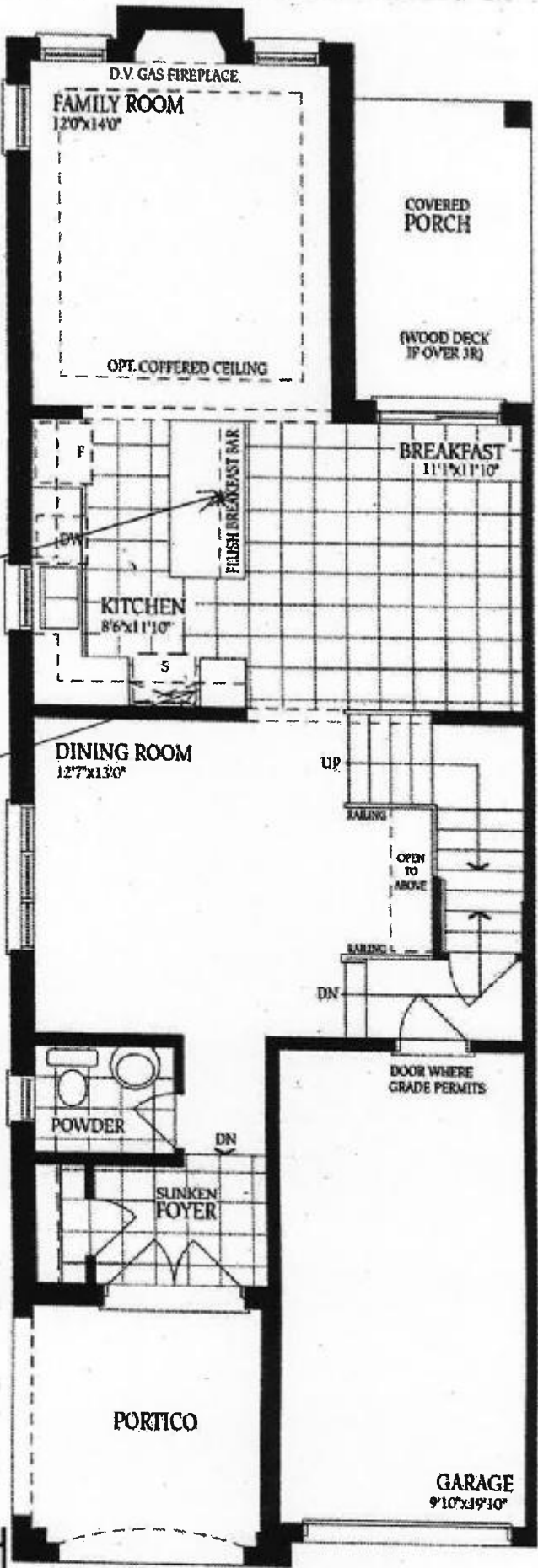
HEATING AND AIR CONDITIONING

| | |
|-------------------|---|
| Inv.85 | 1 - HEATING AND AIR CONDITIONING - ROUGH IN GAS LINE - PER APPLIANCE- STOVE |
| Line558 | Note: |
| 25Jan21 / 17Feb21 | |

The Sonoma 2

ELEVATION A - 1895 SQ.FT.
ELEVATION B - 1893 SQ.FT.
ELEVATION C - 1904 SQ.FT.

dot 153 Right



Ground Floor - Elevation A



Ground Floor - Elevation B



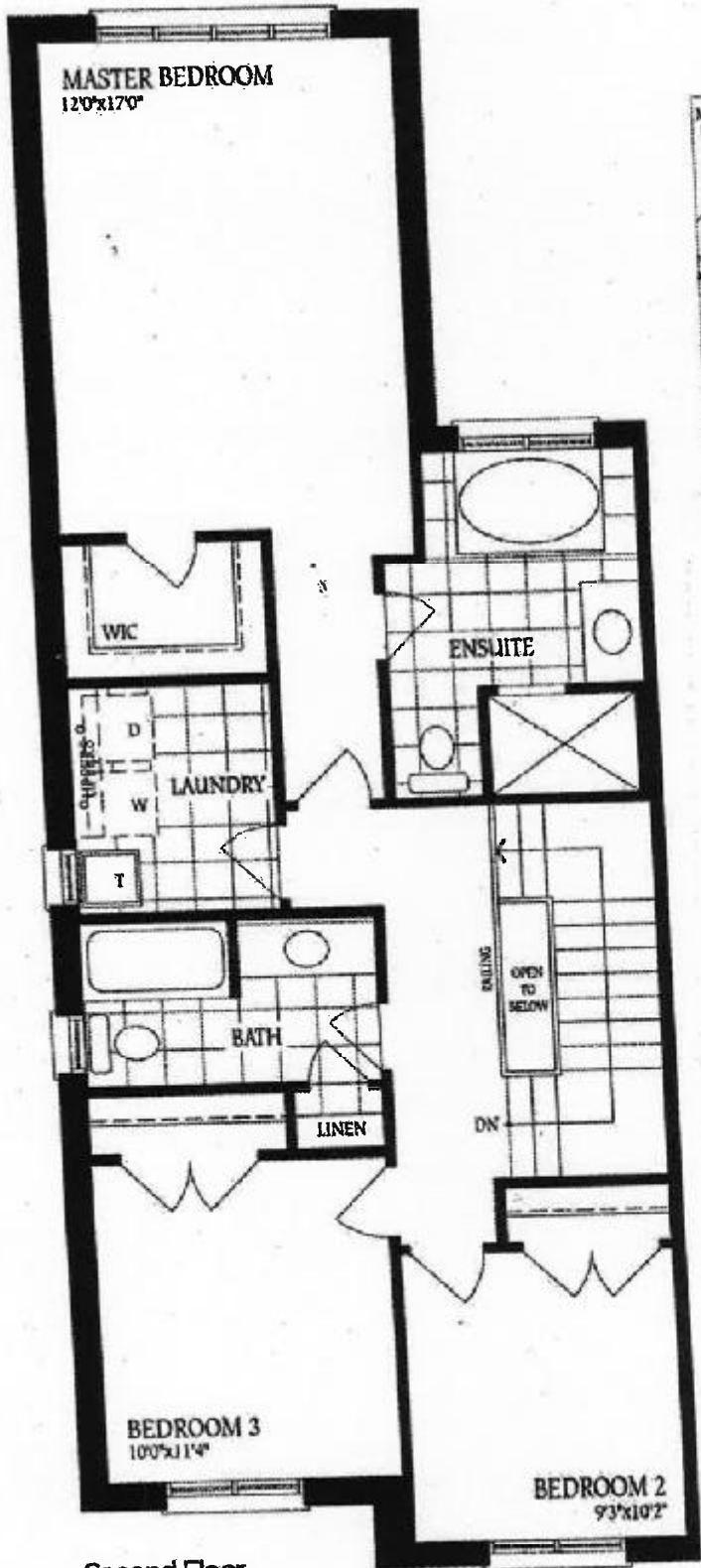
Ground Floor - Elevation C & C-Mod

DS DS
M T M

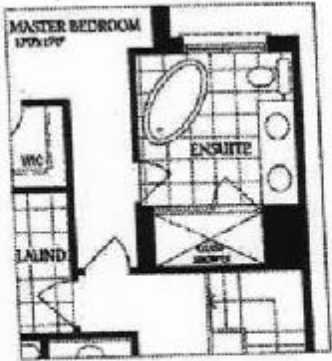
The Sonoma 2

ELEVATION A - 1895 SQ.FT.
ELEVATION B - 1893 SQ.FT.
ELEVATION C - 1904 SQ.FT.

Rot 153 Right



Second Floor
Elevation A



Optional Second Floor
with Alternate Ensuite



Second Floor
Elevation B



Second Floor
Elevation C-Mod



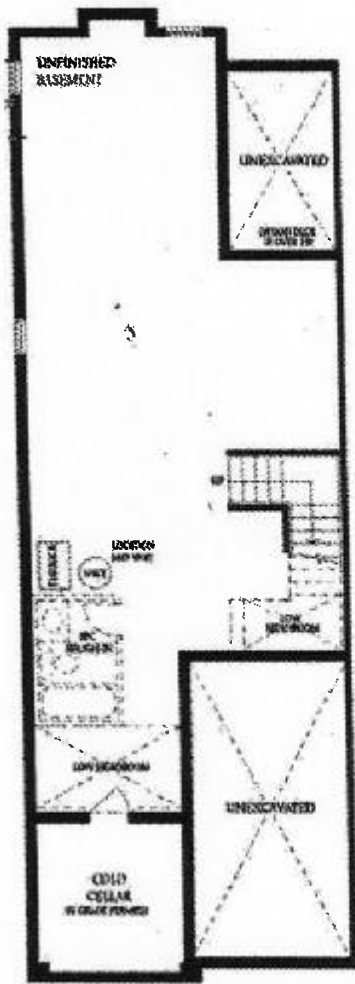
Second Floor
Elevation C-Mod
Total for Elev. C-Mod:
1915 sq ft

DS DS
Handwritten signature/initials

The Sonoma 2

ELEVATION A - 1895 SQ.FT.
ELEVATION B - 1893 SQ.FT.
ELEVATION C - 1904 SQ.FT.

Lot 153 Right



Basement

DS
M
DS
M