



CONSTRUCTION SUMMARY

85N Left - 1 - The Sonoma 1 (SD25-1) Elev B

Extras at Time of Sale

Note:

CONSTRUCTION

|                   |  |
|-------------------|--|
| Inv.98            | 1 - ROUGH IN GRADE DOOR IF GRADE DOES NOT PERMIT.                                  |
| Line674           | Note: GRADE PERMITS GARAGE DOOR.   |
| 30Jan21 / 11Feb21 |  |
| Inv.98            | 1 - SIDE ENTRANCE - AS PER SKETCH  |
| Line682           | Note: SOLID DOOR, FIRE RATED 20 MINUTES WITH SELF CLOSE - SAME AS GARAGE MAN DOOR. |
| 30Jan21 / 11Feb21 |  |

MISCELLANEOUS

|                   |   |
|-------------------|---|
| Inv.72            | 1 - 5 APPLIANCES - STAINLESS STEEL: FRIDGE, RANGE, DISHWASHER AND HOOD FAN – WHITE: WASHER AND DRYER. FROM VENDORS STANDARD LINE. |
| Line536           | Note: AS PER BONUS  |
| 14Jan21 / 19Jan21 |   |

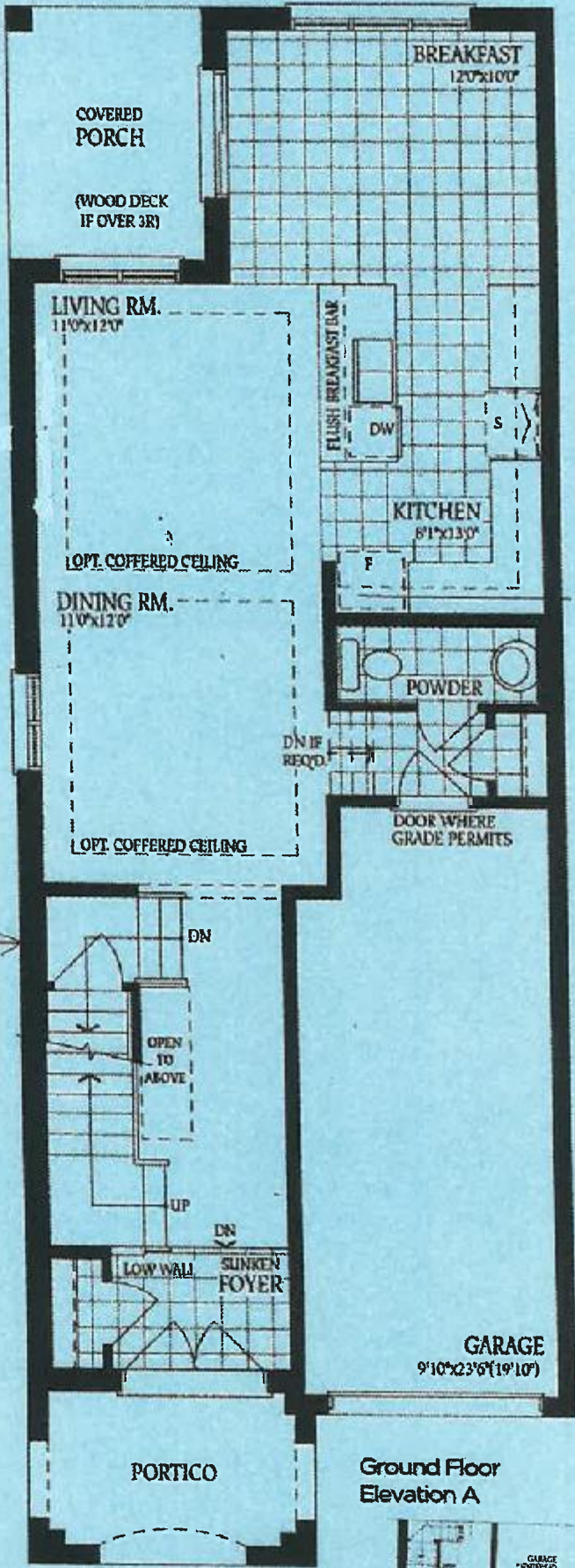
TRIM CARPENTRY

|                   |  |
|-------------------|--|
| Inv.98            | 1 - 8 FOOT DOORS AND ARCHWAYS - THROUGH OUT MAIN FLOOR |
| Line676           | Note:  |
| 30Jan21 / 11Feb21 |  |

The Sonoma 1

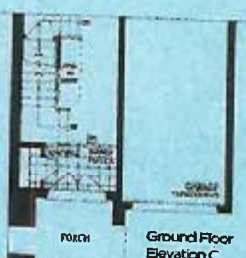
ELEVATION A - 1770 SQ.FT.  
ELEVATION B - 1769 SQ.FT.  
ELEVATION C - 1766 SQ.FT.

85 left



side entrance →

Ground Floor  
Elevation A

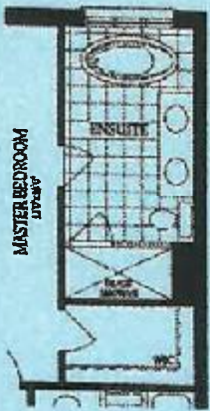
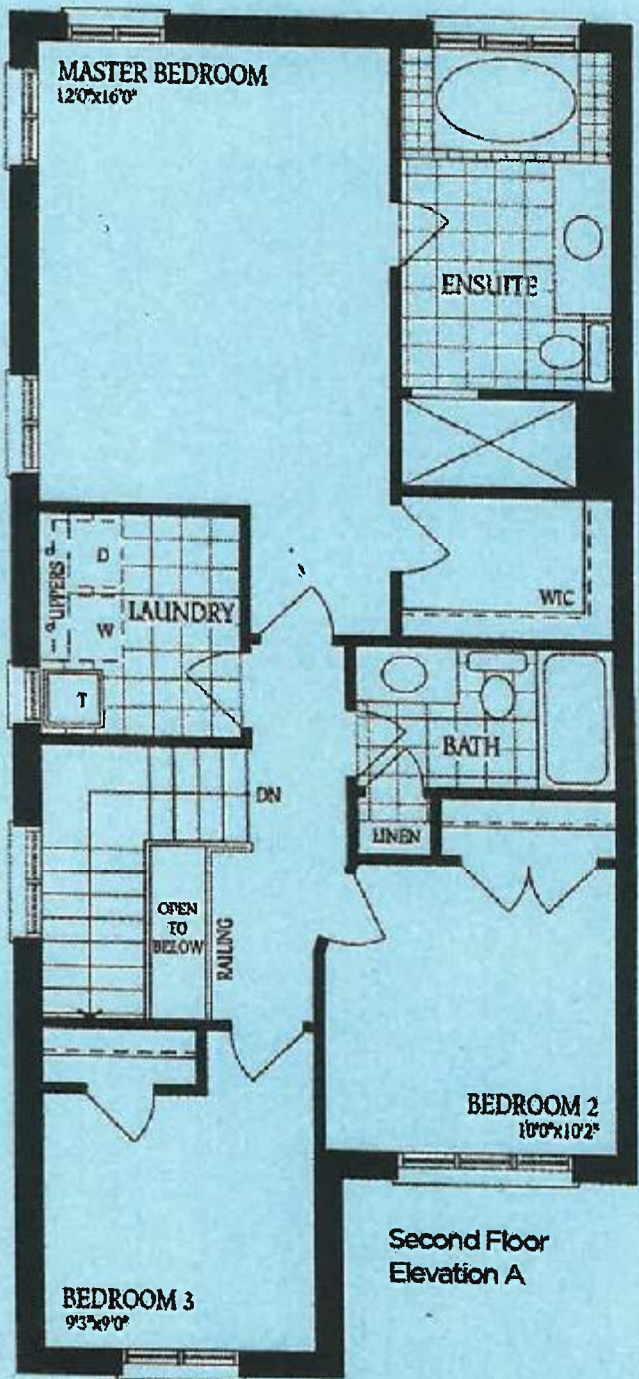




The Sonoma I

ELEVATION A - 1770 SQ.FT.  
ELEVATION B - 1769 SQ.FT.  
ELEVATION C - 1766 SQ.FT.

25 left



Optional Second Floor  
with Alternate Ensuite

Second Floor  
Elevation A



Second Floor  
Elevation B



Second Floor  
Elevation C

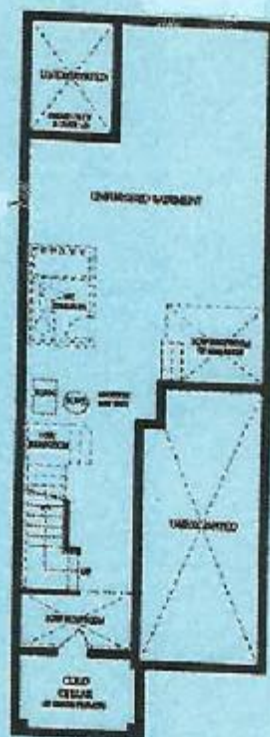




# The Sonoma 1

ELEVATION A - 1770 SQ.FT.  
ELEVATION B - 1769 SQ.FT.  
ELEVATION C - 1766 SQ.FT.

*Lot 85 Left 6*



Basement