



CONSTRUCTION SUMMARY

157N Left - 1 - The Sonoma 4 (SD25-4) Elev C

Extras at Time of Sale

Note:

CABINETRY

Inv.87 1 - LEAVE 36 INCH OPENING IN KITCHEN FOR FRIDGE

Line788 Note:

25Jan21 / 10Feb21

CONSTRUCTION

Inv.87 1 - ROUGH IN GARAGE DOOR IF GRADE DOES NOT PERMIT.

Line566 Note: GRADE DOES NOT PERMIT GARAGE DOOR. ROUGH IN ONLY. NO DOOR PROVIDED.

25Jan21 / 10Feb21

ELECTRICAL

Inv.87 1 - ELECTRICAL - CELING ROUGH IN - NO FIXTURE - ON NEW SWITCH.

Line567 Note: CENTERED ABOVE KITCHEN ISLAND - AS PER SKETCH.

25Jan21 / 10Feb21

TRIM CARPENTRY

Inv.87 1 - INTERIOR TRIM- 8 FT TALL DOORS AND ARCHWAYS - THROUGH OUT MAIN FLOOR

Line568 Note:

25Jan21 / 10Feb21

Inv.87 1 - TRIM AND CARPENTRY- ADD 2 FT WALL AS PER SKETCH # 1

Line565 Note: NO CHARGE.

25Jan21 / 10Feb21

Inv.87 1 - INTERIOR TRIM- DELETE RAILING AND ADD WALL INSTEAD - AS PER SKETCH # 2

Line569 Note: NO CHARGE.

25Jan21 / 10Feb21

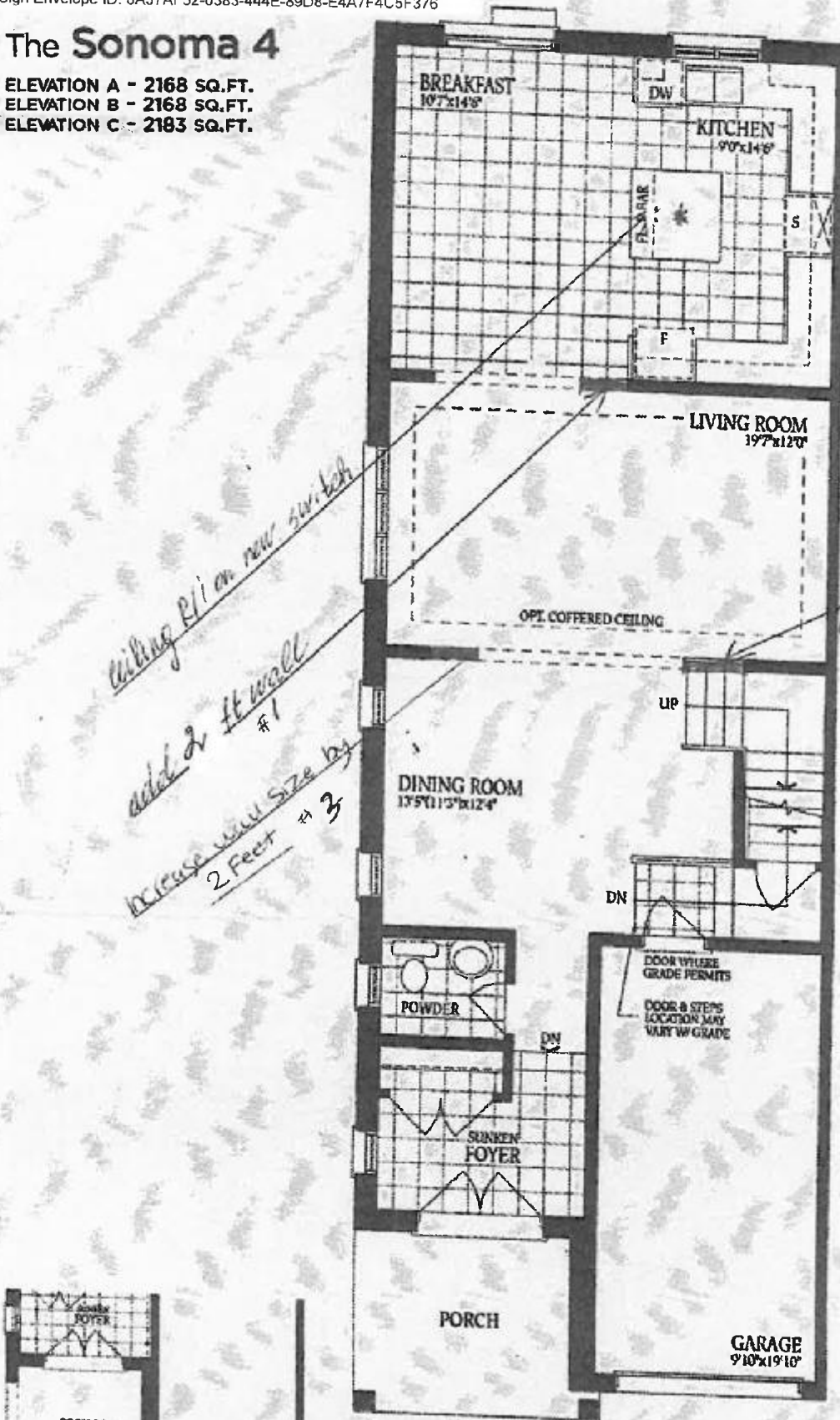
Inv.87 1 - TRIM AND CARPENTRY- ADD 2 FT WALL BETWEEN LIVING & DINING ROOM AS PER SKETCH #3

Line840 Note:

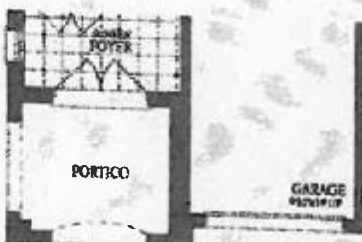
25Jan21 / 10Feb21

The Sonoma 4

ELEVATION A - 2168 SQ.FT.
ELEVATION B - 2168 SQ.FT.
ELEVATION C - 2183 SQ.FT.



Ground Floor
Elevation A



Ground Floor
Elevation B



Ground Floor
Elevation C

157 Left

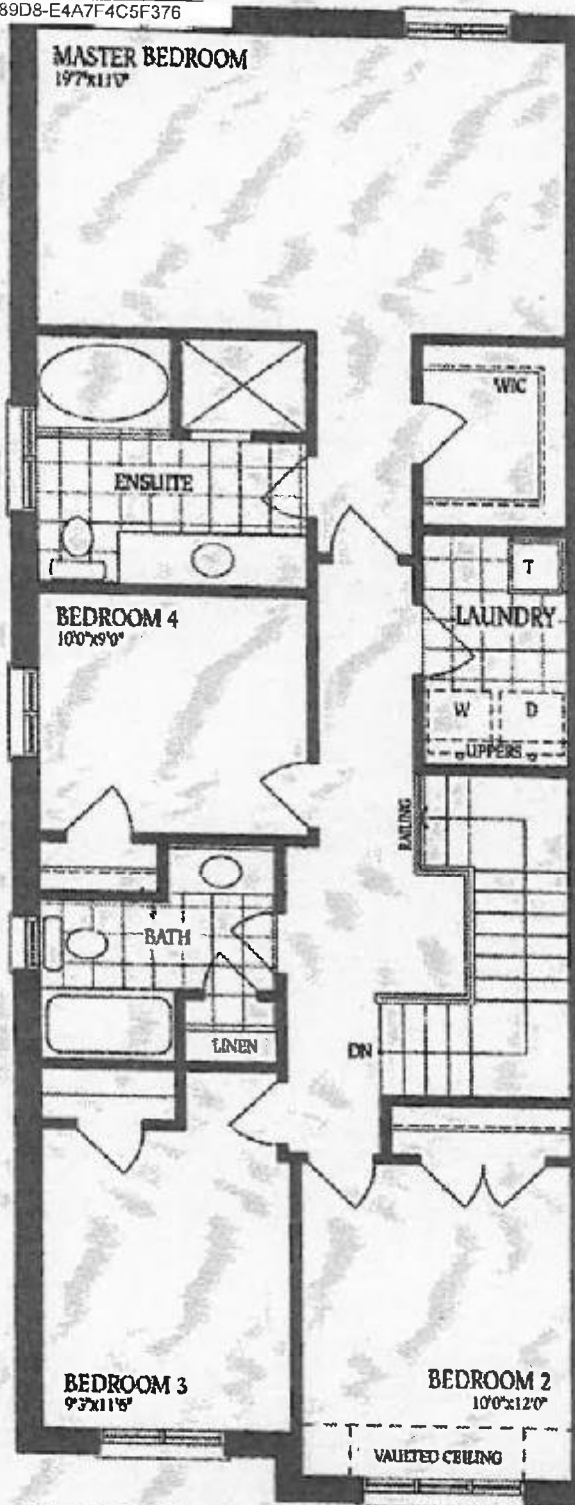
DS
and DS
PA

The Sonoma 4

ELEVATION A - 2168 SQ.FT.

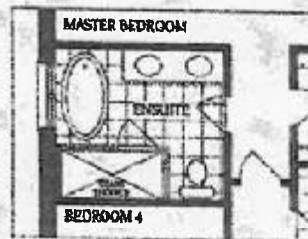
ELEVATION B - 2168 SQ.FT.

ELEVATION C - 2183 SQ.FT.



Second Floor
Elevation A

157 Left



Optional Second Floor
with Alternate Ensuite



Second Floor
Elevation B



Second Floor
Elevation C

DS
and

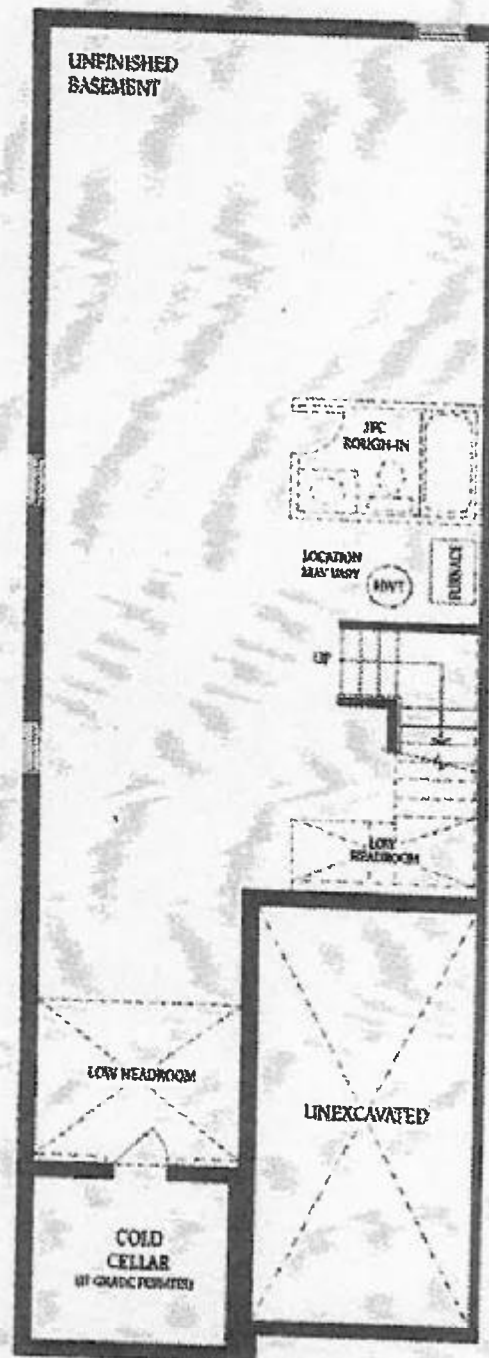
DS
PA

The Sonoma 4

ELEVATION A - 2168 SQ.FT.

ELEVATION B - 2168 SQ.FT.

ELEVATION C - 2183 SQ.FT.



Lot 157 left.

DS
PA

DS
And