



CONSTRUCTION SUMMARY

87N Right - 1 - The Sonoma 2 (SD25-2) Elev C

Extras at Time of Sale

Note:

CONSTRUCTION

Inv.96	1 - MAN DOOR - GRAGE DOOR ROUGH IN - IN CASE GRADE DOES NOT PERMIT.
Line660	Note: GRADE DOES NOT PERMIT - ROUGH IN ONLY - NO DOOR PROVIDED
30Jan21 / 10Feb21	
Inv.96	1 - 8 FOOT DOORS AND ARCHWAYS - THROUGH OUT MAIN FLOOR.
Line662	Note: DUE TO CONSTRUCTION SPECIFIC -TO INCREASE BASEMENT DOOR MIGHT NOT BE POSSIBLE
30Jan21 / 10Feb21	

HEATING AND AIR CONDITIONING

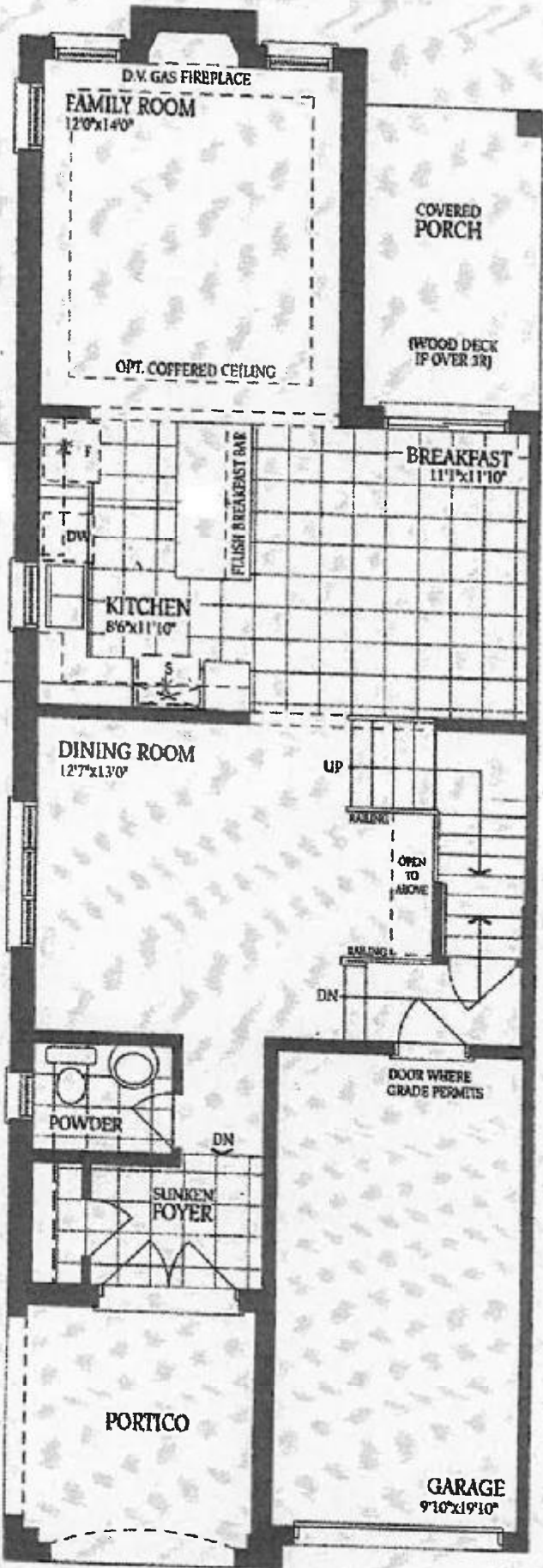
Inv.96	1 - HEATING AND AIR CONDITIONING - ROUGH IN GAS LINE - PER APPLIANCE - STOVE
Line669	Note:
30Jan21 / 10Feb21	

PLUMBING

Inv.96	1 - PLUMBING - WATERLINE FOR ICE MAKER HOOK UP - INCLUDES VALVE- FRIDGE
Line665	Note:
30Jan21 / 10Feb21	

The Sonoma 2

ELEVATION A - 1895 SQ.FT.
ELEVATION B - 1893 SQ.FT.
ELEVATION C - 1904 SQ.FT. - 87 Right



Ground Floor - Elevation A



Ground Floor - Elevation B Ground Floor - Elevation C & C-Mod

DS
[Signature]

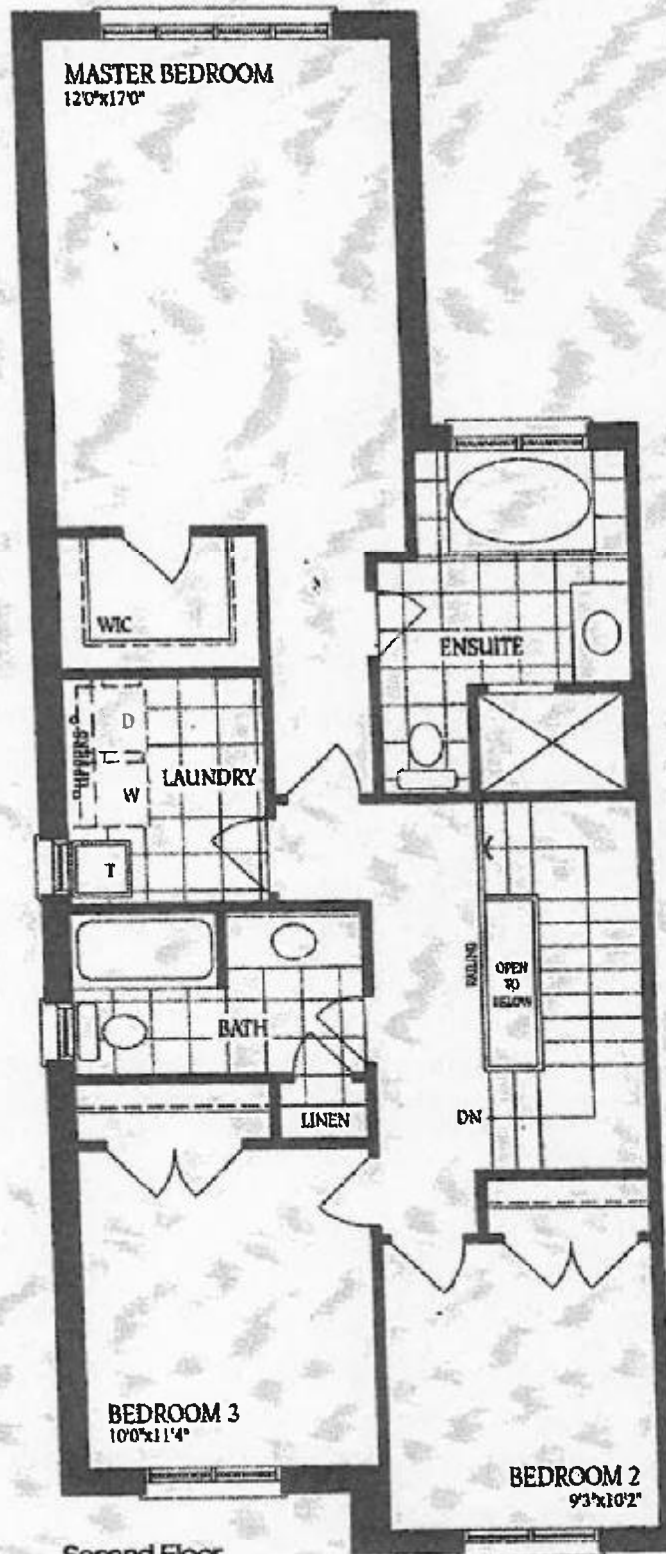
The Sonoma 2

ELEVATION A - 1895 SQ.FT.

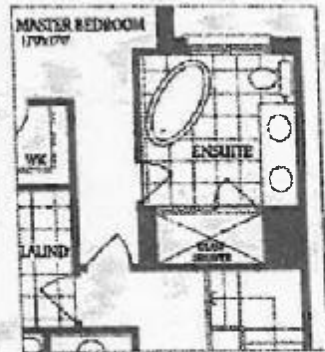
ELEVATION B - 1893 SQ.FT.

ELEVATION C - 1904 SQ.FT.

87 Right



Second Floor
Elevation A



Optional Second Floor
with Alternate Ensuite



Second Floor
Elevation B



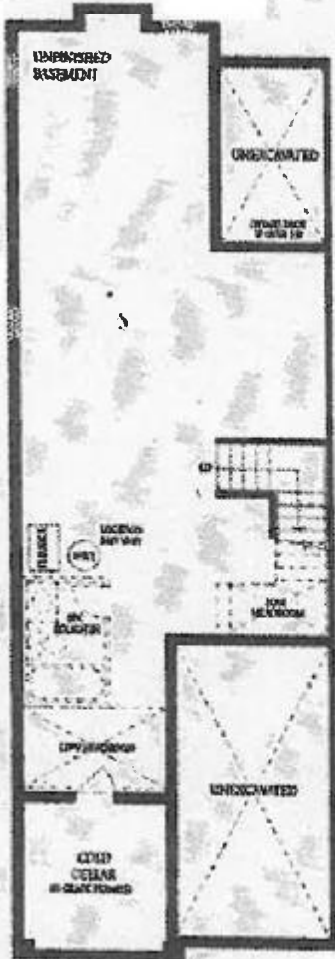
Second Floor
Elevation C - Mod

Total for Elev C-Mod.
1915 sq.ft.

05
OB

The Sonoma 2

ELEVATION A - 1895 SQ.FT.
ELEVATION B - 1893 SQ.FT.
ELEVATION C - 1904 SQ.FT. - 87 Right



Basement

