



CONSTRUCTION SUMMARY

85N Right - 1 - The Sonoma 1 (SD25-1) Elev B

Extras at Time of Sale

Note:

CONSTRUCTION

Inv.97	1 - ROUGH IN GARAGE DOOR IF GRADE DOES NOT PERMIT.
Line673	Note: GRADE PERMITS GARAGE DOOR.
30Jan21 / 10Feb21	

Inv.97	1 - SIDE ENTRANCE - AS PER SKETCH
Line681	Note: SOLID DOOR, FIRE RATED 20 MINUTES, SELF CLOSE- SAME AS GARAGE MAN DOOR.
30Jan21 / 10Feb21	

MISCELLANEOUS

Inv.65	1 - 5 APPLIANCES - STAINLESS STEEL: FRIDGE, RANGE, DISHWASHER AND HOOD FAN – WHITE: WASHER AND DRYER. FROM VENDORS STANDARD LINE.
Line529	Note: AS PER BONUS
13Jan21 / 19Jan21	

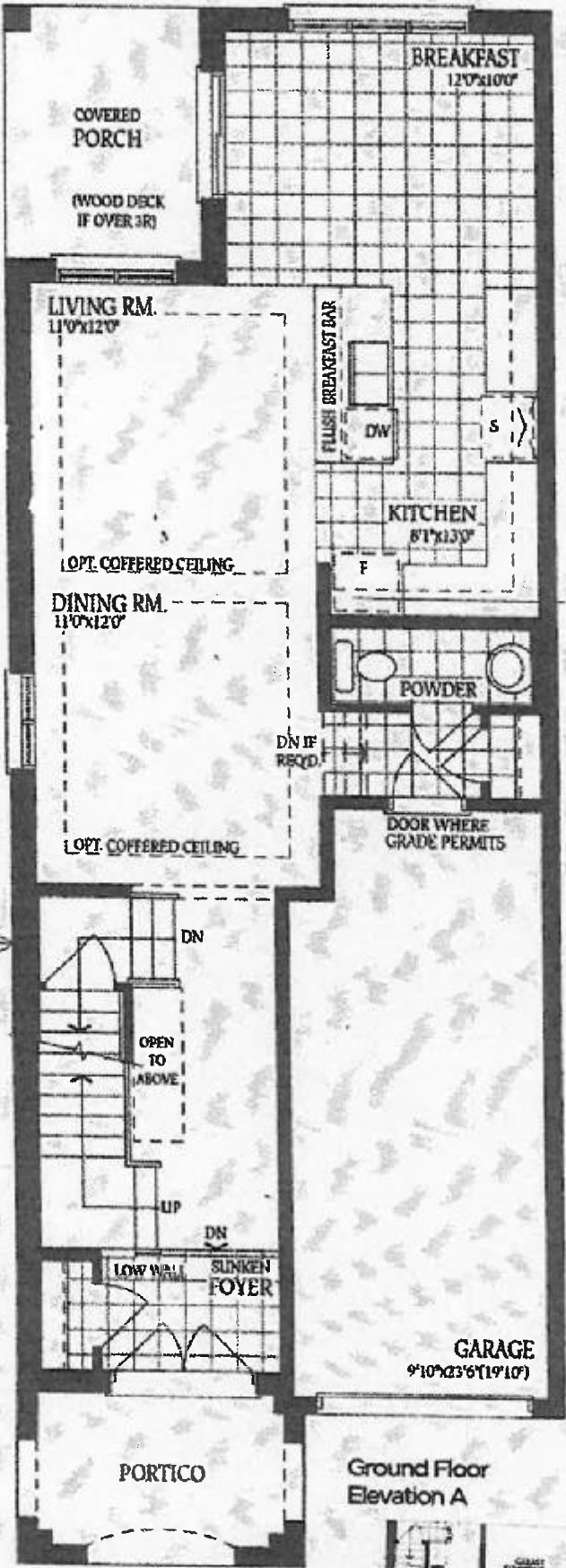
TRIM CARPENTRY

Inv.97	1 - 8 FOOT DOORS AND ARCHWAYS - THROUGH OUT MAIN FLOOR
Line675	Note:
30Jan21 / 10Feb21	

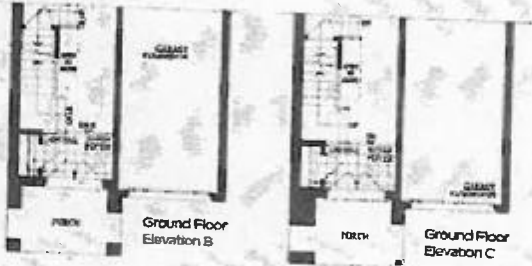
The Sonoma 1

ELEVATION A - 1770 SQ.FT.
ELEVATION B - 1769 SQ.FT.
ELEVATION C - 1766 SQ.FT.

85 right



Ground Floor
Elevation A



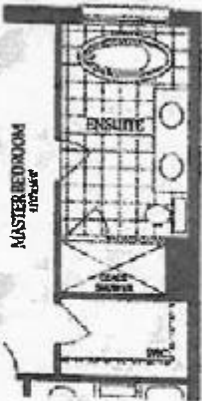
DS
MG

DS
CL

The **Sonoma 1**

ELEVATION A - 1770 SQ.FT.
ELEVATION B - 1769 SQ.FT.
ELEVATION C - 1766 SQ.FT.

85 Right



Optional Second Floor
with Alternate Ensuite



Second Floor
Elevation B

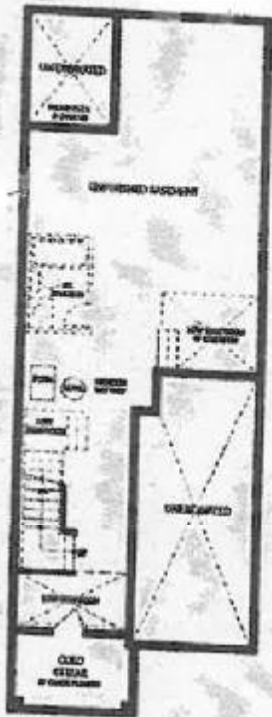


Second Floor
Elevation C



The Sonoma 1 *85 Right*

ELEVATION A - 1770 SQ.FT.
ELEVATION B - 1769 SQ.FT.
ELEVATION C - 1766 SQ.FT.



Basement