



CONSTRUCTION SUMMARY

Block 158 Unit 8 - 1 - The Napa 7 (TH-7E) Elev A

Extras at Time of Sale

Note:

CEILINGS

Inv.34	1 - SMOOTH CEILINGS ON MAIN FLOOR
Line331	Note:
17Dec20 / 4Feb21	

CONSTRUCTION

Inv.34	1 - REMOVE WALL BETWEEN THE KITCHEN AND THE FAMILY ROOM - AS PER SKETCH
Line332	Note: PRICE DOES NOT INCLUDE ISLAND FINISHING
17Dec20 / 4Feb21	

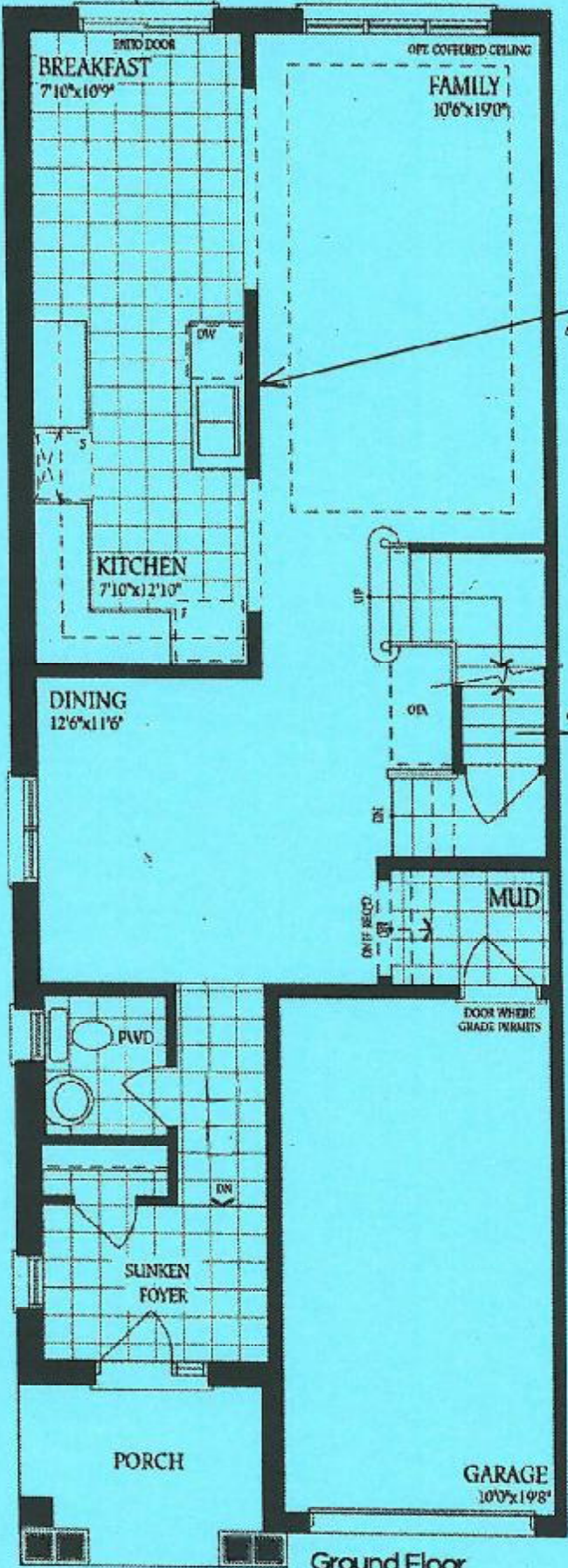
MISCELLANEOUS

Inv.78	1 - 5 APPLIANCES - STAINLESS STEEL: FRIDGE, RANGE, DISHWASHER AND HOOD FAN – WHITE: WASHER AND DRYER. FROM VENDORS STANDARD LINE.
Line653	Note: AS PER BONUS.
21Jan21 / 4Feb21	

PAINT AND STAIN

Inv.34	1 - STAIN STAIRCASE TO MATCH LAMINTE
Line333	Note: PLEASE CONFIRM DOWN STAIRS STEPS
17Dec20 / 4Feb21	

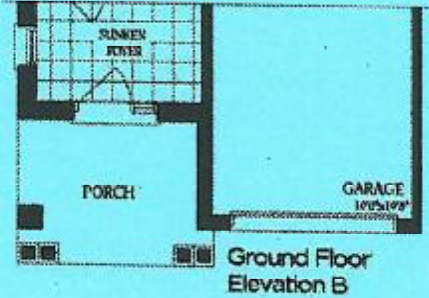
Block 158 - Unit 8  
 Napa 7-End



Remove wall completely

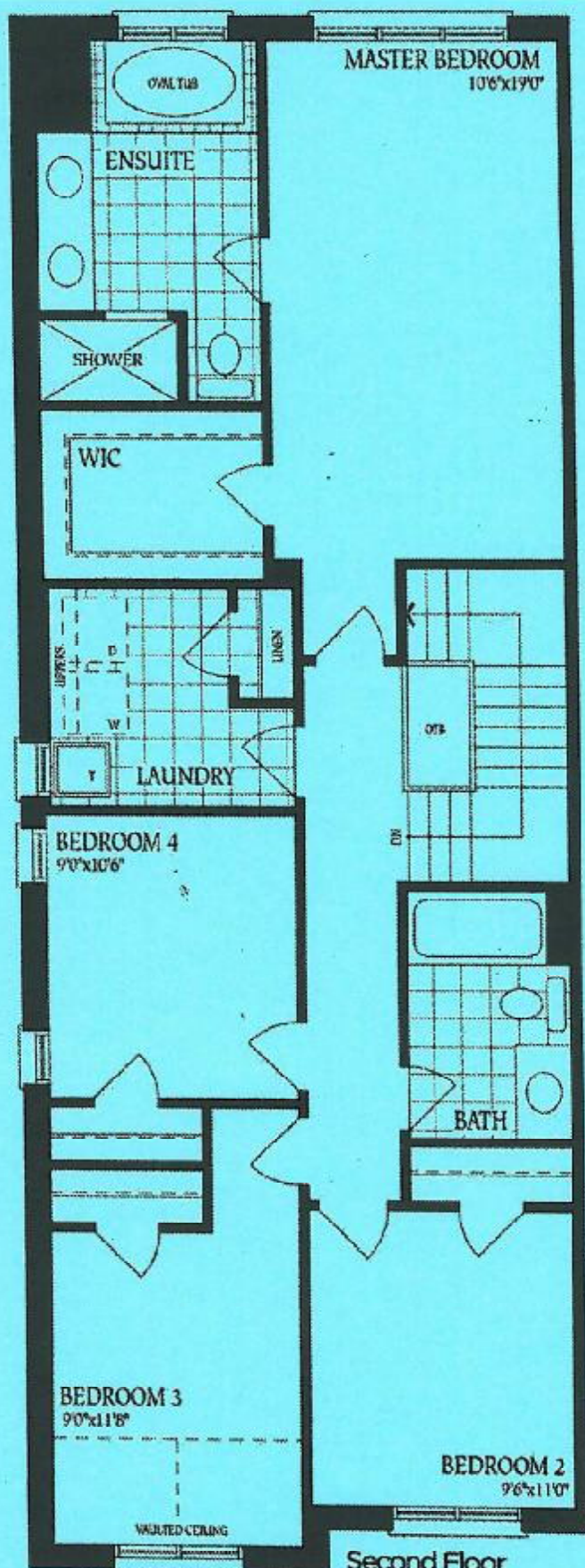
Stain standard staircase

\* Smooth ceiling on main floor \*

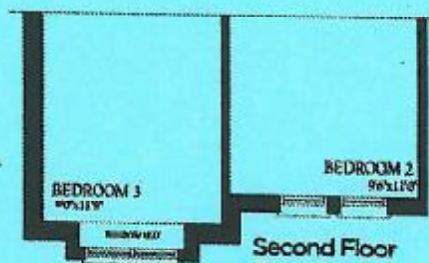




Block 158-unit 8  
Napa 7-End



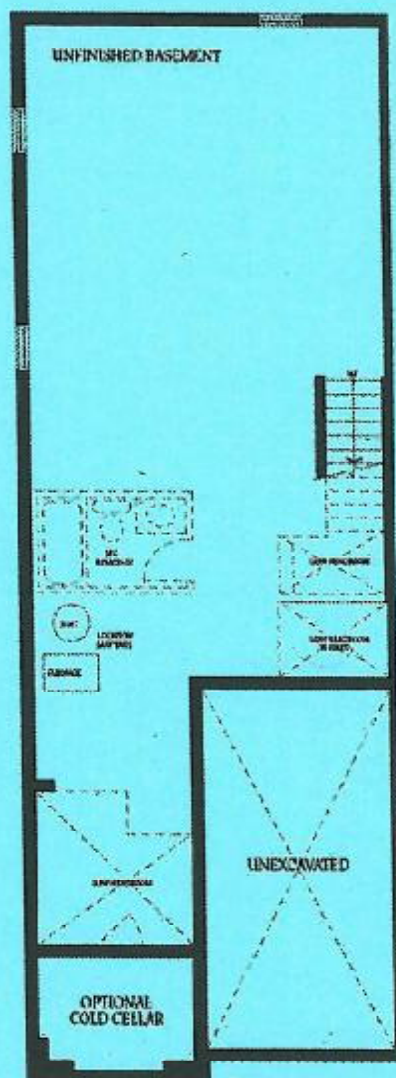
Second Floor  
Elevation A



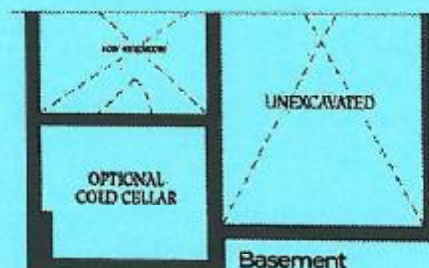
Second Floor  
Elevation B



Block 158 Unit 8  
Napa 7-End



Basement  
Elevation A



Basement  
Elevation B