

GOEMANS APPLIANCES

Expect More. Get More.

APPLIANCE SPECIFICATIONS



PROJECT PARTNER:
Bill To: 4168344740

SHIP TO:
Ship To: 4168344740

PORTILLO & UMPIERREZ, MARIA & JORGE
52 TIBERINI WAY BLOCK 159 UNIT # 3
BRADFORD, ON L3Z 4K3

REMINDER:

To ensure a smooth project it is the responsibility of the homeowner / purchaser of appliances to share all the attached specifications with their cabinet provider, contractor, or any other tradesperson so they have the information required to complete their work accurately. Product specifications are for planning purposes only and are subject to change without notice. Refer to installation instructions shipped with the product before cutting cabinets, counters, panels, etc.

Goemans Appliances assumes no liability for product specifications.

Ship To: 4168344740

Bill To: 4168344740

PORTILLO & UMPIERREZ, MARIA & JORGE
52 TIBERINI WAY BLOCK 159 UNIT # 3
BRADFORD, ON L3Z 4K3

<i>Models</i>	<i>Pages</i>
LRFWS2200S LG Refrigeration	3-8
WM3700HVA LG Washer	9-12
DLEX3700V LG Dryer	13-16

GOEMANS
APPLIANCES**Goemans Appliances**

goemans.com

JASON NG

9052641771

Document **HB00023157-1-1**

Version 1.1

Mon, Jan 18, 2021

7:19 PM EST

steelcod.com/sp/goem/ZK1F9JAK**Note about page numbers:**

Because the original manufacturer's documents are not altered in any way, the page numbers displayed on the page may not correspond to the page number within this package.

All specifications are intended for initial planning purposes only.

Manufacturers reserve the right to change specifications at any time without notice. Always consult the installation instructions found on the manufacturer's website or included with the appliances before installation.

DIMENSIONS



CAPACITY

21.8 cu.ft.

MEASUREMENTS (WXHxD)

30" x 67 1/4" x 33"

INSTAVIEW™ DOOR-IN-DOOR®

No

THINQ®

No

BRAND

LG Brand	Yes
----------	-----

WIDTH

Width	30"
-------	-----

DEPTH

Standard Depth	Yes
----------------	-----

Counter Depth	No
---------------	----

CAPACITY

Refrigerator (cu.ft.)	14.5
-----------------------	------

Freezer (cu.ft.)	7.3
------------------	-----

Total Capacity (cu.ft.)	21.8
-------------------------	------

ENERGY

Energy Consumption (kWh/year)	587
-------------------------------	-----

ENERGY STAR® Qualified	Yes
------------------------	-----

WATER & ICE SYSTEM

Water Dispenser	Yes
-----------------	-----

Ice System	Factory Installed Ice Maker
------------	-----------------------------

Dispenser Light	Yes
Water Filter	LT1000P

COOLING

Linear Compressor	Yes
Smart Cooling Plus™ System	Yes
Multi-Air Flow™ System	Yes
Temperature Sensors	4

CONVENIENCE

Display Type	Membrane/Green LED
Temperature Controls	Electronic/Digital
Door Alarm	Yes
Child Lock	Yes
ADA Compliant	Yes
LoDecibel™ Quiet Operation	Yes
SmartDiagnosis™	Yes

REFRIDGERATOR

No. of Shelves	4 Split
Cantilevered Shelves	Hybrid Cantilevered
Shelf Construction	Spill Protector™ Tempered Glass

Crisper Bins	2 Humidity Crispers
Glide N'Serve® Drawer	Yes
Refrigerator Light	Ceiling LED

REFRIDGERATOR DOOR

Number of Bins	7 Total
Dairy Corner	Yes

FREEZER

Door Type	Pull Drawer
Drawers	2-Tier Organization
DuraBase™ Solid Drawer Base	Yes
Drawer Divider	Yes
Ice Bin	Yes
Freezer Light	Ceiling LED
Freezer Handle	SmartPull™ Handle

MATERIALS AND FINISHES

Contour Door	Yes
Hidden Hinges	Yes
Surface	Smooth
Handles	Matching Commercial Handles

Available Colour

Smudge Resistant Stainless Steel

DIMENSIONS/CLEARANCES/WEIGHTS

Depth with Handles	35 1/2"
--------------------	---------

Depth without Handles	33"
-----------------------	-----

Depth without Door	29"
--------------------	-----

Depth (Total with Door Open)	44 3/4"
------------------------------	---------

Height to Top of Case	67 1/4"
-----------------------	---------

Height to Top of Door Hinge	68 1/2"
-----------------------------	---------

Width	29 3/4"
-------	---------

Width (Door Open 90° with Handle)	38 1/4"
-----------------------------------	---------

Width (Door Open 90° without Handle)	33 1/4"
--------------------------------------	---------

Door Edge Clearance with Handle	4 1/4"
---------------------------------	--------

Door Edge Clearance without Handle	2"
------------------------------------	----

Installation Clearance	Sides 1/8", Top 1", Back 1"
------------------------	-----------------------------

Weight (Unit/Carton)	237/259
----------------------	---------

Carton Dimensions (WxHxD)	31 1/2" x 69 3/8" x 36 3/4"
---------------------------	-----------------------------

LIMITED WARRANTY

Parts & Labour	1 Year
----------------	--------

Sealed System (Parts)	7 Years
-----------------------	---------

Linear Compressor (Parts Only)

10 Years

UPC CODES

LRFWS2200S (Smudge Resistant Stainless Steel)

772454073212

WM3700H_A

4.5 cu. ft. Front Load Washer

12 Wash Programs

6 Motion™ Technology

Inverter Direct Drive Motor with 10-Year Warranty

Steam Technology

TWINWash™ Compatibility

SmartThinQ® (Wi-Fi Enabled)

SmartDiagnosis™

ColdWash™ Option

ENERGY STAR® Most Efficient 2018

NeverRust™ Stainless Steel Drum



SmartThinQ®

Enjoy new ways to control your home with LG smart appliances

- Start the laundry while you're out shopping
- Get alerts when the cycle is finished
- Works with the LG SmartThinQ® app



SUMMARY	
Capacity (cu.ft.)	4.5 cu. ft.
Matching Electric Dryer	DLEX3700_
Matching Gas Dryer	DLGX3701_
Color	White (W), Graphite Steel (V)
APPEARANCE	
Hard Buttons	Yes
Touch Buttons	Yes
Dial-A-Cycle™	Yes
ENERGY	
ENERGY STAR® Most Efficient 2018	Yes
ENERGY STAR® Qualified	Yes
CEE Tier	2
IMEF	2.92
IWF	2.9
WASH PROGRAMS	
No. of Programs	12
	Normal, Heavy Duty, Bedding, Sanitary, Allergiene™, Tub Clean, Bright White, Perm. Press, Delicates, Towels, Speed Wash, Downloaded
WASH OPTIONS	
No. of Options	12
	Steam, Fresh Care, Prewash, Remote Start, Delay Wash, Wi-Fi, Add Garments, Cold-Wash, Water Plus, Extra Rinse, Rinse+Spin, Child Lock
WASH DETAILS	
No. of Wash/Rinse Temps	5
Wash/Rinse Temps	Extra Hot, Hot, Warm, Cold, Tap Cold
No. of Spin Speeds	5
Spin Speeds	Extra High, High, Medium, Low, No Spin
Max RPM	1300
Water Levels	Load Sensing
No. of Soil Levels	5

FABRIC CARE FEATURES	
Steam Technology	Yes
Allergiene™ Cycle	Yes
Sanitary Cycle	Yes
ColdWash™ Option	Yes
SenseClean™ System	Yes
CONVENIENCE FEATURES	
TrueBalance™ Anti-Vibration System	Yes
4 Tray Dispenser	Prewash, Main Wash (with liquid detergent cup), Bleach, Fabric Softener
LoDecibel™ Quiet Operation	Yes
End of Cycle Signal	Yes
LoadSense	Yes
Child Lock*	Yes
Auto Suds Removal	Yes
Leveling Legs	4 Adjustable Legs
Easy Loading TiTub™	Yes
SMARTTHINQ® TECHNOLOGY	
SmartDiagnosis™ (v3.0)	Yes
Wi-Fi	Yes
Energy Monitoring	Yes
Cycle Monitoring and Notification	Yes
MOTOR	
Motor Type	Inverter Direct Drive Motor
Axis	Horizontal
MATERIALS AND FINISHES	
NeverRust™ Stainless Steel Drum	Yes
Cabinet	PCM
Control Panel	Plastic
Top Plate	Painted
Door / Rim	Glass/Chrome
Door Cover	Clear Round Cover
All Available Colors	White (W), Graphite Steel (V), Cherry Red (R)
CERTIFICATION	
AFFA	Yes

POWER SOURCE	
Ratings	UL Listed
Electrical Requirements	120V, 10 Amps
Type	Electric
OPTIONS/ACCESSORIES	
Pedestal	WDP4_
Pedestal (WxHxD)	27 x 14 1/8 x 30 3/4 (50 9/16 D with door open)
LG Sidekick™ Pedestal Washer	WD100C_
LG Sidekick™ Pedestal Washer (WxHxD)	27 x 14 1/8 x 30 3/4 (50 9/16 D with door open)
Stacking Kit	KSTK1
DIMENSIONS	
Product (WxHxD)	27" x 39" x 30 1/4"
Depth with Door Open	(55" D with door open)
Carton (WxHxD)	29 23/32" x 41 27/32" x 31 17/32"
Weight (Product/Carton)	202.8 / 224.8 lbs.
LIMITED WARRANTY	
Parts and Labor	3 Years
Direct Drive Motor	10 Years
Drum	Limited Lifetime
UPC CODES	
WM3700HVA (Washer Graphite Steel)	048231024600
DLEX3700V (Electric Dryer Graphite Steel)	048231024921
DLGX3701V (Gas Dryer Graphite Steel)	048231024938
WDP4V (Pedestal Graphite Steel)	048231011198
WD100CV (LG SideKick™ Graphite Steel)	048231015165
WM3700HWA (Washer White)	048231024624
DLEX3700W (Electric Dryer White)	048231024969
DLGX3701W (Gas Dryer White)	048231024976
WDP4W (Pedestal White)	048231011211
WD100CW (LG SideKick™ White)	048231015172

WM3700H_A

4.5 cu. ft. Front Load Washer

QUICK INSTALL & CLEARANCES

For full installation directions/clearances please refer to the corresponding User Manual and Installation Guide.

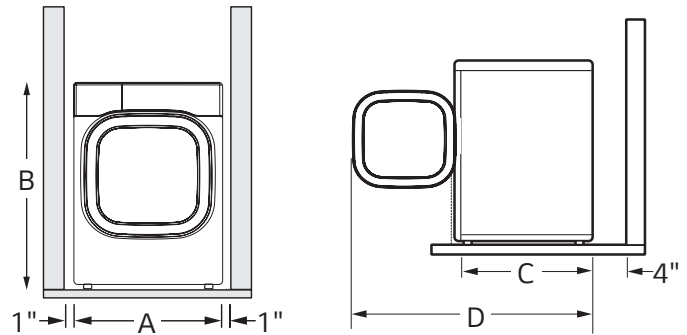
DIMENSIONS

A Width	27"
B Height	39"
C Depth	30 1/4"
D Depth with Door Open	55"
Carton (WxHxD)	29 23/32" x 41 27/32" x 31 17/32"

POWER SOURCE

Ratings	UL Listed
Electrical Requirements	120V, 10 Amps
Type	Electric

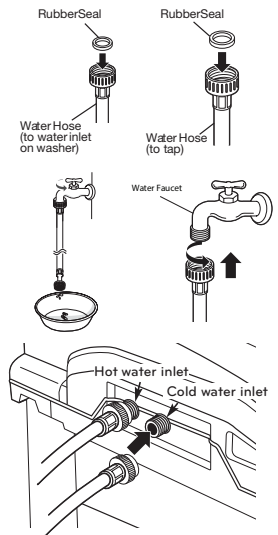
DIMENSIONS AND CLEARANCES



- Install the washing machine on a solid floor that is strong and rigid enough to support the weight of the washing machine, even when fully loaded, without flexing or bouncing. If the floor has too much flex, you may need to reinforce it to make it more rigid. If the floor is not solid, it may cause severe vibration and noise.

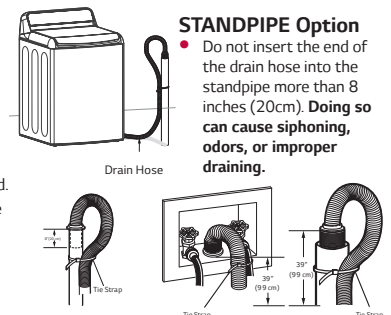
CONNECTING THE WATER LINES

- LG recommends the use of LG hoses. Any leaking, property damage, or damage to the washing machine caused by an improper installation or by the use of non-LG hoses is not covered under the terms of the LG warranty and is the sole responsibility of the customer and/or an installer.
- Water supply pressure must be between 20 psi and 120 psi (138-827 kPa). If the water supply pressure is more than 120 psi, a pressure reducing valve must be installed.
- Inspect the threaded fitting on each hose and make sure there is a rubber seal in place in both ends of each hose.
- Connect the water supply hoses to the HOT and COLD water faucets tightly by hand and then tighten another 2/3 turn with pliers.
- Always run a gallon or two of water through each inlet hose to flush dirt, scale and other debris out of the water lines. Doing so will help prevent future problems with clogged filter screens, and will also allow you to verify which water line is hot and which is cold.
- Attach the hot water line to the hot water inlet on the back of the washer. Attach the cold water line to the cold water inlet on the back of the washer. Tighten the fittings securely. Turn ON both faucets all the way and check for leaks at both ends of the hoses.



CONNECTING THE DRAIN HOSE

- The drain hose should always be properly secured. Failure to properly secure the drain hose can result in flooding and property damage.
- The drain must be installed in accordance with any applicable local codes and regulations.
- Make sure that the drain hose is not stretched, pinched, crushed, or kinked.
- Normal height of the end of the hose should be approximately 35"-47" (0.9-1.2 m) from the floor.
- Do not install the end of the drain hose lower than 29 in. (73.7 cm) or higher than 96 in. (243.8 cm) above the bottom of the washer or more than 60 in. (152.4 cm) away from the washer.
- Never create an airtight seal between the hose and the drain with tape or other means. If no air gap is present, water can be siphoned out of the tub resulting in poor wash/rinse performance or clothing damage.



STANDPIPE Option

- Do not insert the end of the drain hose into the standpipe more than 8 inches (20cm). Doing so can cause siphoning, odors, or improper draining.

LAUNDRY TUB Option

- Do not use this drain hose with a floor drain. The end of the drain hose must be at least 29 inches above the floor for proper draining to occur.

ELECTRICAL REQUIREMENTS

- The washer should be plugged into a 120-VAC, 60-Hz grounded 3-prong outlet. Plug in the washer. Improper connection of the equipment-grounding conductor can result in risk of electric shock. Check with a qualified electrician or service technician if you are in doubt as to whether the appliance is properly grounded. Do not modify the plug provided with the appliance. If it does not fit the outlet, have a proper outlet installed by a qualified electrician. Failure to follow these warnings can cause serious injury, fire, electrical shock, or death.
- The power outlet must be within 60 inches (1.5 m) of either side of the washer.
- The appliance and outlet must be positioned so that the plug is easily accessible.
- Do not overload the outlet with more than one appliance.
- The outlet must be grounded in accordance with current wiring codes and regulations.
- Time-delay fuse or circuit breaker is recommended.
- It is the personal responsibility and obligation of the product owner to have a proper outlet installed by a qualified electrician.



Product Specifications

The appearance and specifications listed in this manual may vary due to constant product improvements.

Electrical requirements	120 VAC @ 60 Hz
Min. / Max. water pressure	20 – 120 psi (138–827 kPa)
Dimensions	70 cm(W) X 77 cm(D) X 99 cm(H), 139.6 cm (D with door open) 27"(W) X 30 ¼"(D) X 39"(H), 55" (D with door open)
Net weight	187.4 lb (85 kg)
Max spin speed	1300 RPM

WARNING

- Moving or installation of the appliance requires two or more people. Failure to follow these instructions may result in injury.
- Store and install the appliance where it will not be exposed to temperatures below freezing or exposed to outdoor weather conditions. Failure to follow this warning can cause product or part failure, serious injury, fire, electric shock, or death.
- Properly ground the washer to conform with all governing codes and ordinances. Failure to follow this warning can cause serious injury, fire, electric shock, or death.
- To reduce the risk of electric shock, do not install the appliance in humid spaces. Failure to follow this warning can cause serious injury, fire, electric shock, or death.
- To ensure proper airflow, do not block the large opening on the bottom of the washer with carpeting or other materials.
- Do not remove the ground prong. Do not use an adapter or extension cord. Plug into a grounded 3-prong outlet. Failure to follow this warning can cause serious injury, fire, electric shock, or death.
- Certain internal parts are intentionally not grounded and may present a risk of electric shock only during servicing. Service personnel - Do not contact the following parts while the appliance is energized: pump, valve, motor, control board.

Choosing the Proper Location

Install the washer on a solid floor that is strong and rigid enough to support the weight of the washer, even when fully loaded, without flexing or bouncing. If the floor has too much flex, you may need to reinforce it to make it more rigid. If the floor is not solid, it may cause severe vibration and noise.

NOTE

- Before installing the washer, make sure the floor is clean, dry and free of dust, dirt, water and oil so the washer feet cannot slide easily. Leveling feet that can move or slide on the floor can contribute to excess vibration and noise due to poor contact with the floor.
- If a drip pan must be used, take extra care to follow the instructions provided with the drip pan and make sure the leveling feet are adjusted for firm and even contact with the pan. Use of drip pans and failure to properly level the machine may result in increased vibration and noise during operation.
- Allow for sufficient space between the walls and the washer for installation.

Power Outlet

- The power outlet must be within 60 inches (1.5 m) of either side of the washer.
- The appliance and outlet must be positioned so that the plug is easily accessible.
- Do not overload the outlet with more than one appliance.
- The outlet must be grounded in accordance with current electrical wiring codes and regulations.
- Use a time-delay fuse or circuit breaker.

NOTE

- It is the personal responsibility and obligation of the product owner to have a proper outlet installed by qualified service personnel.

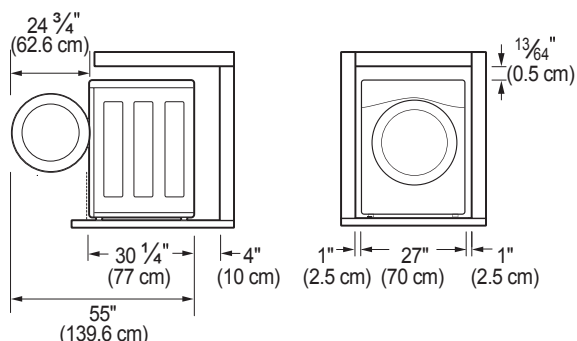
Flooring

- To minimize noise and vibration, the washer must be installed on a solidly constructed floor.
- Allowable slope under the entire washer is a maximum 1 inch (2.5 cm) difference from side to side or from front to back.
- Installing on carpeting and soft tile surfaces is not recommended.
- Never install the washer on a platform or weakly supported structure.

NOTE

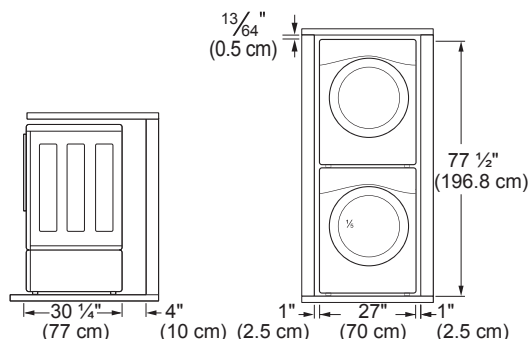
- The washer must be installed on firm flooring to minimize vibration during the spin cycle. Concrete flooring is best, but a wood floor is sufficient, provided it is built to FHA standards.

Floor Installation



To ensure sufficient clearance for water lines, the drain line and airflow, allow minimum clearances of at least 1 inch (2.5 cm) at the sides and 4 inches (10 cm) behind the unit. Be sure to allow for wall, door, or floor moldings that may increase the required clearances.

Stacked or Pedestal Installation



NOTE

- Refer to the instructions packaged with the optional pedestal kit before installing with a pedestal kit.
- Do not use a drip pan with a pedestal or pedestal washer installation as it can block the drawer. Using a drip pan may result in increased vibration and noise during operation.

LG LAUNDRY

DLEX3700_/DLGX3701_

7.4 cu. ft. Front Load Dryer

7.4 cu. ft. Capacity

12 Dryer Programs

ENERGY STAR® Qualified

SmartThinQ® Technology

SmartDiagnosis™

TurboSteam™

Wi-Fi Connectivity



Enjoy new ways to control your home with LG smart appliances

- Get an alert when kids forget to close the door
- Make more ice while you're at work
- Works with LG SmartThinQ® app

SmartThinQ®



SUMMARY

Capacity	7.4 cu. ft.
Matching Washer	WM3700HWA
Sensor Dry	Yes
Steam	Yes
Colors	White (W), Graphite Steel (V), Wild Cherry Red (R)

APPEARANCE

Intelligent Electronic Controls with LED Display	Yes
Dial-A-Cycle™	Yes
Touch Buttons	Yes

ENERGY

ENERGY STAR® Qualified	Yes
------------------------	-----

DRYER PROGRAMS

No. of Programs	12
	Normal, Heavy Duty, Bedding, Anti Bacterial, SteamSanitary™, SteamFresh™, Perm. Press, Delicates, Towels, Speed Dry (Manual Dry), Air Dry (Manual Dry), Downloaded

DRYER OPTIONS

No. of Options	12
	More Time, Less Time, Damp Dry Signal, Wrinkle Care, Control Lock, Custom Program, PGM Save, Wi-Fi Connect, Energy Saver, TurboSteam™, Reduce Static, Remote Start
Temperature Settings	High, Medium High, Medium, Low, Ultra Low
Drying Levels	Very Dry, More Dry, Normal Dry, Less Dry, Damp Dry
Manual Dry Times	60 min., 50 min., 40 min., 30 min., 20 min., More Time/Less Time

FABRIC CARE FEATURES

Sensor Dry	Yes
Precise Temperature Control with Variable Heater	Yes
Steam	TurboSteam™

CONVENIENCE FEATURES

3 Minute Installation Check	Yes
LoDecibel™ Quiet Operation	Yes
End of Cycle Signal	Yes
Drum Light	Yes
Reversible Door	Yes
FlowSense™ Duct Clogging Indicator	Yes
Wrinkle Care Option	Yes
Child Lock	Yes
Venting Option	Electric: 4 Way Venting / Gas: 3 Way Venting
4 Adjustable Legs	Yes
Remaining Time Display/Status Indicator(s)	Yes

SMARTTHINQ® TECHNOLOGY

SmartDiagnosis™	Yes
Wi-Fi	Yes
Voice Activation	Yes
Works with	Google Assistant
Remote Control and Cycle monitor	Yes
Energy Monitoring	Yes (Wi-Fi)

ENERGY

ENERGY STAR® Qualified	Yes
------------------------	-----

MATERIALS AND FINISHES

Aluminized Alloy Steel Drum	Yes
Tub Rear	Painted
Cabinet	Painted Steel
Door	Round w/ Chrome trim
All Available Colors	White (W), Graphite Steel (V), Wild Cherry Red (R)

POWER SOURCE

Ratings	CSA Listed
Electrical Requirements	120V, 15 Amps (Gas) / 240V 30 Amps (Electric)
Type	Electric (DLEX3700_) Gas (DLGX3701_)
BTU Rating	10,000 Feet

OPTIONS/ACCESSORIES

LP Conversion Kit	383EEL3002D
Side Venting Kit	383EEL9001B
Pedestal	WDP4W
Pedestal (WxHxD)	27 x 14 1/8 x 30 3/4 (50 1/2 D with door open)

DIMENSIONS

Product (WxHxD)	27" x 38 11/16" x 30"
Depth with Door Open	51"
Carton (WxHxD)	29 7/10" x 43 1/5" x 31 3/10"
Weight (Product/Carton) Electric	123
Weight (Product/Carton) Gas	136.2

WARRANTY

Parts and Labor	1 Year
-----------------	--------

WARRANTY

DLEX3700W	048231024969
DLGX3701W	048231024976
WM3700HWA	048231024624
WM3700HVA	048231024600
DLEX3700V	048231024921
DLGX3701V	048231024938
WDP4W (Pedestal)	048231011211
WD100CW (LG SideKick™)	048231015172

Installation Location Requirements

WARNING

- Read all installation instructions completely before installing and operating your dryer! It is important that you review this entire manual before installing and using your dryer. Detailed instructions concerning electrical connections, gas connections, and exhaust requirements are provided on the following pages.

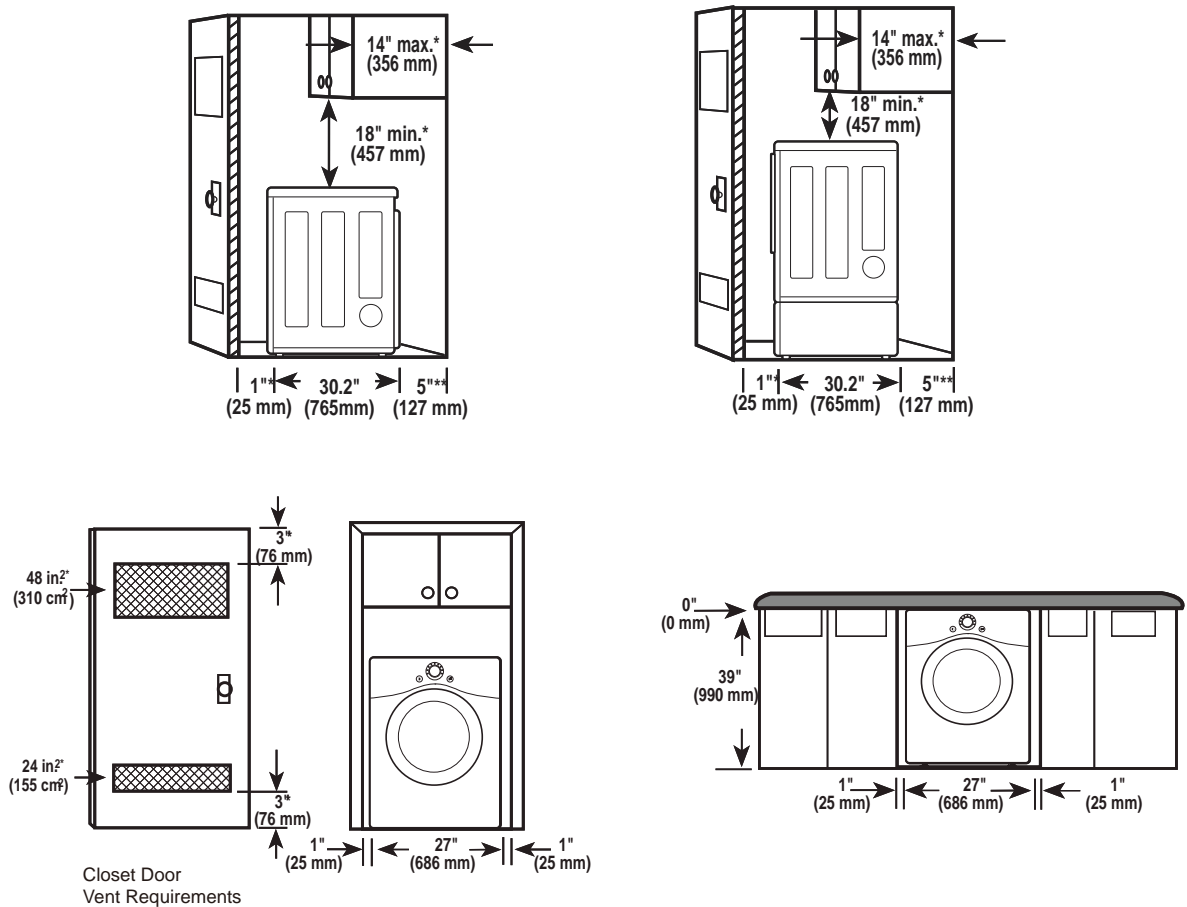
The installation requires:

- A location that allows for proper exhaust installation. A gas dryer must be exhausted to the outdoors. See Venting the Dryer.
- A grounded electrical outlet located within 2 ft. (61 cm) of either side of the dryer. See Connecting Electric Dryers.
- A sturdy floor to support the total dryer weight of 200 lb (90.7 kg). The combined weight of a companion appliance should also be considered.
- No other fuel-burning appliance can be installed in the same closet as a dryer.
- Additional clearances might be required for wall, door and floor moldings.
- Companion appliance spacing should also be considered.

NOTE

- The floor must be level, with a maximum slope of 1 inch (2.5 cm) under the entire dryer. Clothes may not tumble properly, and automatic sensor cycles may not operate correctly if the dryer is not level.
- For garage installation, you will need to place the dryer at least 18 inches (45.7 cm) above the floor. The standard pedestal height is 15 inches (38 cm). You will need 18 inches (45.7 cm) from the garage floor to the bottom of the dryer.
- Do not operate your dryer at temperatures below 45 °F (7 °C). At lower temperatures, the dryer might not shut off at the end of an automatic cycle. This can result in longer drying times.
- The dryer must not be installed or stored in an area where it will be exposed to water and/or weather.
- Check code requirements that limit, or do not permit, installation of the dryer in garages, closets, mobile homes or sleeping quarters. Contact your local building inspector.

Clearances



Installation Spacing for Recessed Area or Closet Installation

The following clearances are recommended for this dryer. This dryer has been tested for clearances of 1 inch (2.5 cm) on the sides and rear. Recommended clearances should be considered for the following reasons:

- Additional clearances should be considered for ease of installation and servicing.
- Additional clearances should be considered on all sides of the dryer to reduce noise transfer. For closet installation, with a door, minimum ventilation openings in the top and bottom of the door are required. Louvered doors with equivalent ventilation openings are acceptable.

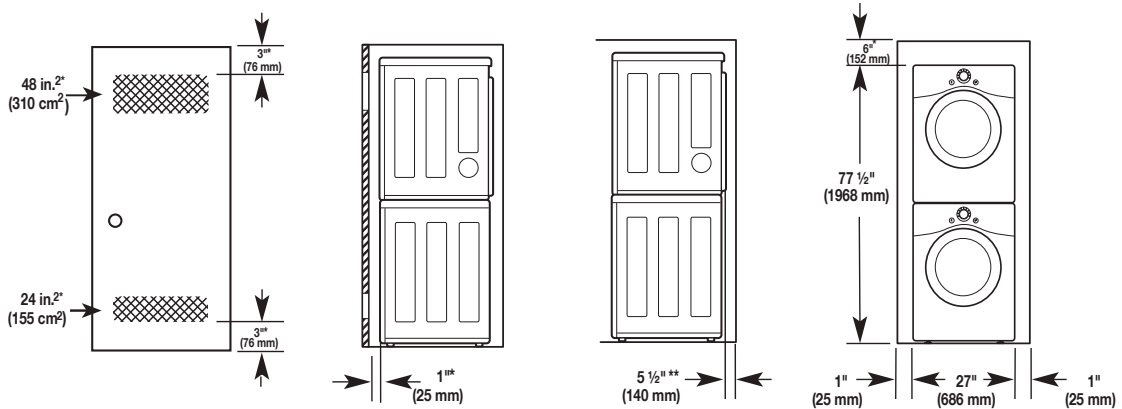
Closet Ventilation Requirements

Closets with doors must have both an upper and lower vent to prevent heat and moisture buildup in the closet. One upper vent opening with a minimum opening of 48 sq. in. (310 cm²) must be installed no lower than 6 feet above the floor. One lower vent opening with a minimum opening of 24 sq. in. (155 cm²) must be installed no more than one foot above the floor. Install vent grills in the door or cut down the door at the top and bottom to form openings. Louvered doors with equivalent ventilation openings are also acceptable.

NOTE

- There should be at least a little space around the dryer (or any other appliance) to eliminate the transfer of vibration from one appliance to another. If there is enough vibration, it could cause appliances to make noise or come into contact, causing paint damage and further increasing noise.

Installation Spacing for Recessed Area or Closet, with Stacked Washer and Dryer



* Required spacing

** For side or bottom venting, 2-inch (5.1 cm) of spacing is allowed.

Installation Spacing for Cabinet

For cabinet installation with a door, minimum ventilation openings in the top of the cabinet are required.

* Required spacing

