

Lot 192

KitchenAid® Microwave Hood Combination

PRODUCT MODEL NUMBERS

KMHC319E KMHP519E KMHS120E

ELECTRICAL REQUIREMENTS

Required:

- A 120 volt, 60 Hz, AC only, 15- or 20-amp electrical supply with a fuse or circuit breaker.

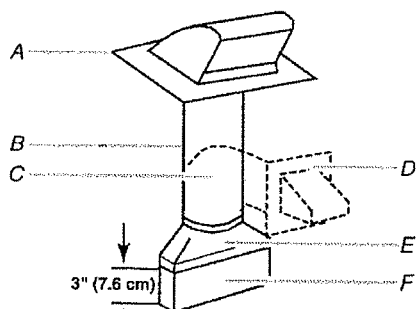
Recommended:

- A time-delay fuse or time-delay circuit breaker.
- A separate circuit serving only this microwave oven.

VENTING REQUIREMENTS

Rectangular to Round Transition:

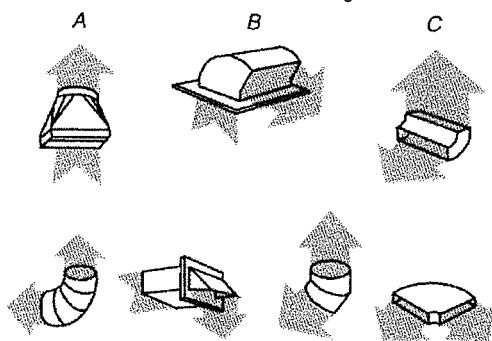
NOTE: The minimum 3" (7.6 cm) clearance must exist between the top of the microwave oven and the rectangular to round transition piece so that the damper can open freely and fully.



- A. Roof cap
B. 6" (15.2 cm) min. diameter round vent
C. Elbow (for wall venting only)
D. Wall cap
E. 3 1/4" x 10" to 6" (8.3 x 25.4 cm to 15.2 cm) rectangular to round transition piece
F. Vent extension piece, at least 3" (7.6 cm) high

Recommended Standard Fittings

The following length equivalents are for use when figuring vent length. See the examples in "Recommended Vent Length."



- A. Rectangular to round transition piece: 3 1/4" x 10" to 6" = 5 ft (8.3 x 25.4 cm to 15.2 cm = 1.5 m)
B. Roof cap: 3 1/4" x 10" = 24 ft (8.3 x 25.4 cm = 7.3 m)
C. 90° elbow: 3" x 10" = 25 ft (8.3 x 25.4 cm = 7.6 m)
D. 90° elbow: 6" = 10 ft (15.2 cm = 3 m)
E. Wall cap: 3 1/4" x 10" = 40 ft (8.3 x 25.4 cm = 12.2 m)
F. 45° elbow: 6" = 5 ft (15.2 cm = 1.5 m)
G. 90° flat elbow: 3 1/4" x 10" = 10 ft (8.3 x 25.4 cm = 3 m)

Recommended Vent Length

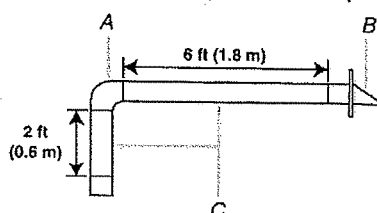
A 3 1/4" x 10" (8.3 x 25.4 cm) rectangular or 6" (15.2 cm) round vent should be used.

The total length of the vent system including straight vent, elbow(s), transitions and wall or roof caps must not exceed the equivalent of 140 ft (42.7 m) for either type of vent. See "Recommended Standard Fittings" section for equivalent lengths.

For best performance, use no more than three 90° elbows.

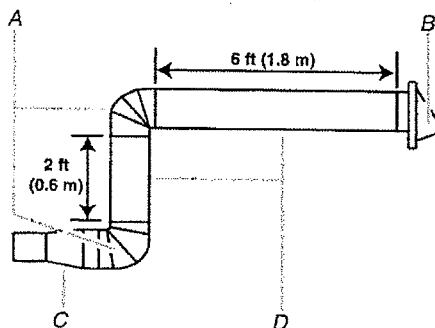
To calculate the length of the system you need, add the equivalent lengths of each vent piece used in the system. See the following examples:

3 1/4" x 10" (8.3 x 25.4 cm) vent system = 73 ft (22.2 m) total



- A. One 3 1/4" x 10" (8.3 x 25.4 cm) 90° elbow = 25 ft (7.6 m)
B. 1 wall cap = 40 ft (12.2 m)
C. 2 ft (0.6 m) + 6 ft (1.8 m) straight = 8 ft (2.4 m)

6" (15.2 cm) vent system = 73 ft (22.2 m) total



- A. Two 90° elbows = 20 ft (6.1 m)
B. 1 wall cap = 40 ft (12.2 m)
C. 1 rectangular to round transition piece = 5 ft (1.5 m)
D. 2 ft (0.6 m) + 6 ft (1.8 m) straight = 8 ft (2.4 m)

If the existing vent is round, a rectangular to round transition piece must be used. In addition, a rectangular 3" (7.6 cm) extension vent between the damper assembly and rectangular to round transition piece must be installed to keep the damper from sticking.

192

LOCATION REQUIREMENTS

Special Requirements

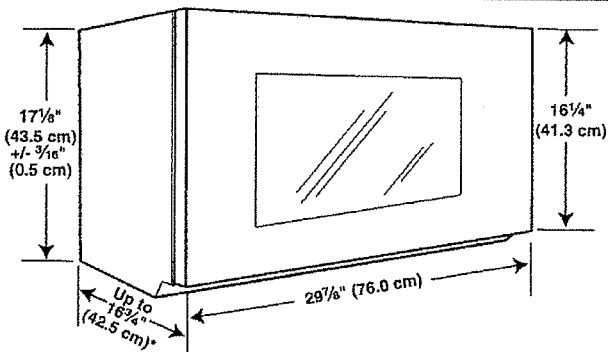
For Wall Venting Installation Only:

- Cutout must be free of any obstructions so that the vent fits properly, and the damper blade opens freely and fully.

For Roof Venting Installation Only:

- If you are using a rectangular to round transition piece, 3" (7.6 cm) clearance needs to exist above the microwave oven so that the damper blade can open freely and fully. See "Rectangular to Round Transition" illustration in "Venting Design Specifications" section.

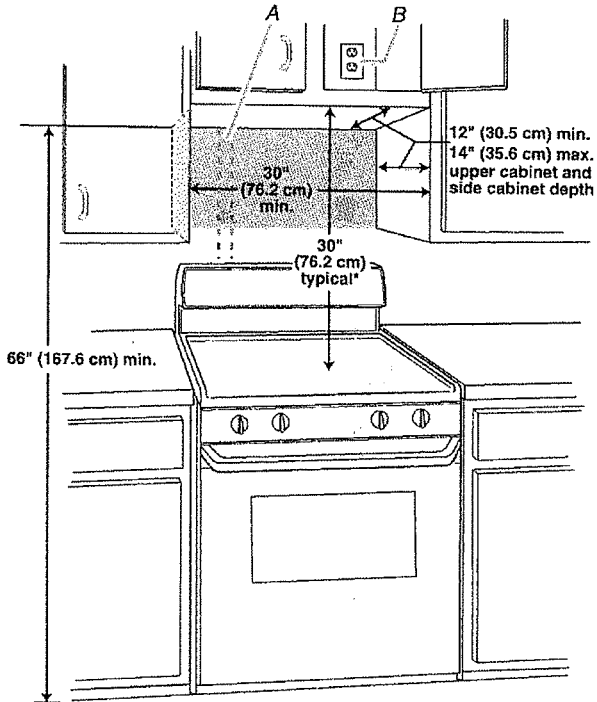
PRODUCT DIMENSIONS



* Overall depth of product will vary slightly depending on door design.

INSTALLATION DIMENSIONS

NOTE: The grounded 3 prong outlet must be inside the upper cabinet. See "Electrical Requirements" section.



A. 2" x 4" (5.1 x 10.2 cm) wall stud
B. Grounded 3 prong outlet

*30" (76.2 cm) is typical for 66" (167.6 cm) installation height. Exact dimension may vary depending on type of range/cooktop below.

192



3041 DUFFERIN ST
TORONTO, ON M6B 3T8
Tel: (416) 781-9145

Online Banking Account #

To arrange pick-up,
delivery, installation or
service, please call
289 748-0322

7975 Heritage Rd
Brampton, ON L6Y 5X5

www.tasco.net

Delivery Date	Invoice #
24-Jul-17	TT00024398
Order Date	Terms
2-Jan-17	2 WKS PRIOR
Salesperson	PO #
NARESH NARANG	
Salesperson Email	
nnarang@tasco.net	



Bill To: 6479923260 DIMARCO, SAM BRADFORD, ON (647) 992-3260		Ship To 6479923260 DIMARCO, SAM BRADFORD, ON (647) 992-3260 SDDiMarco@basspro.com		
Delivery / Special Instructions:		Printed 1/2/2017 8:00 pm	Invoice Type SS	Map Zone GTN

QTY	MODEL / ITEM #	LOC	DESCRIPTION	PRICE	TOTAL
1	KSIB900ESS		FNT CTRL RANGE,INDUCTN,7.1 CU. FT,AQUALIFT S/C,TR	2,630.00	2,630.00
1	KRFC704FPS		KITCHENAID, RANGE, INDUCTION, FREE-STANDIN, STAINLESS	4,067.00	4,067.00
1	KDTE204ESS		23.8 CU FT., COUNTER DEPTH, PLATINUM INTERIOR, PRE KITCHENAID, REFRIGERATOR, FRENCH 3-DOOR, C	799.00	799.00
1	WM3770HVA		46DB,6CYC,6OPT,3RD RCK,14 PL STNG,UPR STN GLD RK	839.00	839.00
1	DLEX3570V		KITCHENAID, DISHWASHER, INTEGRATED, COLOUR, STAINLESS	0.00	0.00
1			PART# W10574777 REQUIRED FOR INSTALLATION (EXTRA CHARGE).	839.00	839.00
2	HOSE LNDRY 6FT 48369		5.2 CUFT,STEAM,HTR,1200RPM,12 WASH/10 OPT LG ELECTRONICS, WASHER, FRONT LOAD, LARGE CAPA	0.00	0.00
1			DRIVER BASIC LDRY H/U DECLINED	0.00	0.00
-1	Payment		MUST PURCHASE OPTIONAL HOSES	120.00	120.00
			27W,7.3CUFT,STEAM,LED DISPLAY	120.00	-120.00
			LG ELECTRONICS, DRYER, ELECTRIC - TO MATCH LAR, GRAPHITE STEEL	1,046.62	1,046.62
			DRIVER BASIC LDRY H/U DECLINED		
			1X 6 FT WASH HOSE, 3/4,STAINLESS STEEL BRAID		
			RELIABLE PARTS, ACCESSORY WASHER		
			P-DELIVERY \$5,000-9,999		
			SALES DELIVERY ALLOWANCE		
			VISA		
			BALANCE BY CERTIFIED CHEQUE / CASH / DEBIT/INTERNET BANKING 2 WKS PRIOR TO DELIVERY. IF CHANGING FROM CASH TO CREDIT CARD ANY CASH DISCOUNTS WILL BE FORFEITED AND APPLIED TO THE INVOICE ACCORDINGLY.		

192



3041 DUFFERIN ST
TORONTO, ON M6B 3T8
Tel: (416) 781-9145

Online Banking Account #

To arrange pick-up,
delivery, installation or
service, please call
289 748-0322

7975 Heritage Rd
Brampton, ON L6Y 5X5

www.tasco.net

Delivery Date 24-Jul-17	Invoice # TT00024398
Order Date 2-Jan-17	Terms 2 WKS PRIOR
Salesperson NARESH NARANG	PO #
Salesperson Email nnarang@tasco.net	



Bill To: 6479923260 DIMARCO, SAM BRADFORD, ON (647) 992-3260	Ship To: 6479923260 DIMARCO, SAM BRADFORD, ON (647) 992-3260 SDDiMarco@basspro.com						
Delivery / Special Instructions:	<table><tr><td>Printed</td><td>Invoice Type</td><td>Map Zone</td></tr><tr><td>1/2/2017 8:00 pm</td><td>SS</td><td>GTN</td></tr></table>	Printed	Invoice Type	Map Zone	1/2/2017 8:00 pm	SS	GTN
Printed	Invoice Type	Map Zone					
1/2/2017 8:00 pm	SS	GTN					

- Y ☒ N Extended Warranty
Y ☒ N Remove old: All old appliances moved at the owner's risk and must be disconnected prior to delivery
Y ☒ N Installation: Not included unless otherwise specified
Y ☒ N Product specifications received
Y ☒ N I give permission for **TASCO** to send me information concerning my appliances and upcoming sales and events

Other Terms and Conditions

- 2 weeks prior to scheduled delivery date invoice must be paid in full
- Product specifications are for planning purposes only and are subject to change without notice. Refer to installation instructions shipped with the product before cutting cabinets, counters, panels, etc. **TASCO** assumes no liability for product specifications
- Delivery/removal access is the customer's responsibility
- Upon delivery customer agrees to accept service in accordance with the manufacturer's warranty
- Any and all payments are refundable only at **TASCO'S** discretion. A 25% minimum restocking charge will apply on cancellations and returns
- Portions of your personal information may be shared with manufacturers and distributors in order to validate the product warranty and/or ensure the proper maintenance of your products
- All product remains the property of **TASCO** until paid in full
- Interest of 18% per annum will be charged on overdue accounts
- This sales invoice is based on delivery within 1 year from date of purchase. After 1 year (or if market conditions adversely change) **Tasco** reserves the right to review the pricing/delivery on this order and offer our customers options to accommodate these changes. Any & all date sensitive supplier promotions are exempt from the 1 year price guarantee and must be taken by the promotional delivery deadline.

I have read and agree to comply with the selected payment and other terms and conditions

CUSTOMER SIGNATURE _____
Print Name _____

FOR THE WAY IT'S MADE.®

30" (76.2 cm) Freestanding Electric Range

PRODUCT MODEL NUMBERS

KSEB900E

KSEG700F

KSIB900E

Electrical: If codes permit and a separate ground wire is used, it is recommended that a qualified electrical installer determine that the ground path and wire gauge are in accordance with local codes.

Do not use an extension cord.

To properly install your range, you must determine the type of electrical connection you will be using and follow the instructions provided for it here.

- Range must be connected to the proper electrical voltage and frequency as specified on the model/serial number rating plate. The model/serial rating plate is located behind the oven door on the top right-hand side of the oven frame.
- This range is manufactured with the neutral terminal connected to the cabinet. Use a 3-wire, UL listed, 40- or 50-amp power supply cord (pigtail) (see following Range Rating chart). If local codes do not permit ground through the neutral, use a 4-wire power supply cord rated at 250 volts, 40 or 50 amps and investigated for use with ranges.

Range Rating*

**Specified Rating of
Power Supply Cord Kit
and Circuit Protection
Amps**

120/240 Volts	120/208 Volts	Amps
8.8 - 16.5 KW	7.8 - 12.5 KW	40 or 50**
16.6 - 22.5 KW	12.6 - 18.5 KW	50

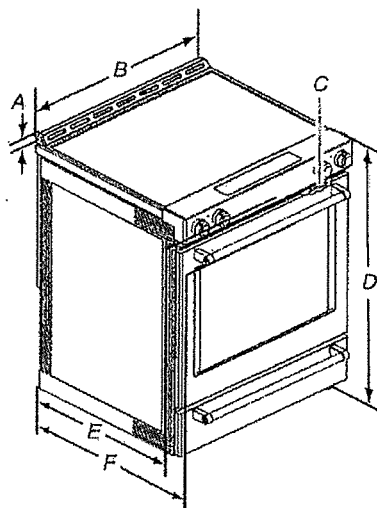
*The NEC calculated load is less than the total connected load listed on the model/serial rating plate.

****If connecting to a 50-amp circuit, use a 50-amp rated cord with kit. For 50-amp rated cord kits, use kits that specify use with a nominal 1½" (34.9 mm) diameter connection opening.**

- A circuit breaker is recommended.

PRODUCT DIMENSIONS

This manual covers several models. Your model may appear different from the models depicted. Dimensions given are maximum dimensions across all models.



- A. 1 1/8" (3.0 cm) height from cooktop to top of vent
- B. 29 3/8" (75.9 cm)
- C. Model/serial number plate (located behind the oven door on the top right-hand side of the oven frame)
- D. 36" (91.4 cm) height to top of cooktop edge with leveling legs screwed all the way in*
- E. 28 1/8" (71.9 cm) max. depth from front of console to back of range.
- F. 28 3/8" (73.3 cm) max. depth from handle to back of range.

IMPORTANT: Range must be level after installation. Follow the instructions in the "Level Range" section. Using the cooktop as a reference for leveling the range is not recommended.

*Range can be raised approximately 1" (2.5 cm) by adjusting the leveling legs.

192

CABINET OPENING DIMENSIONS

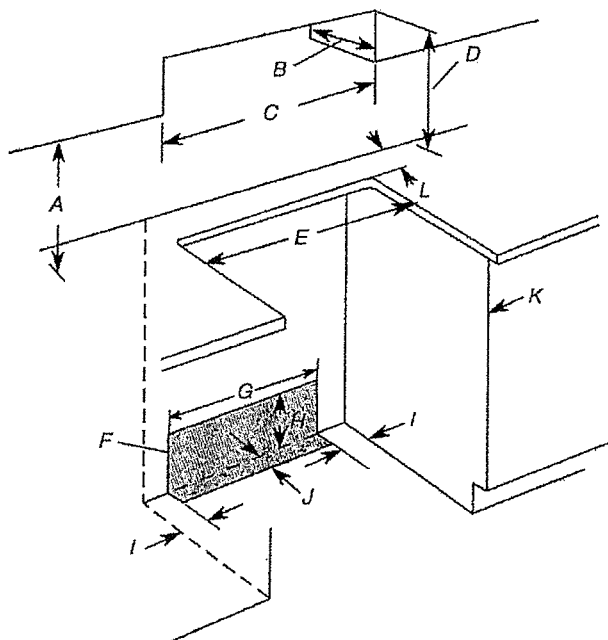
Cabinet opening dimensions shown are for 25" (64.0 cm) countertop depth, 24" (61.0 cm) base cabinet depth and 36" (91.4 cm) countertop height.

IMPORTANT: If installing a range hood or microwave hood combination above the range, follow the range hood or microwave hood combination installation instructions for dimensional clearances above the cooktop surface.

Range may be installed next to combustible walls with zero clearance.

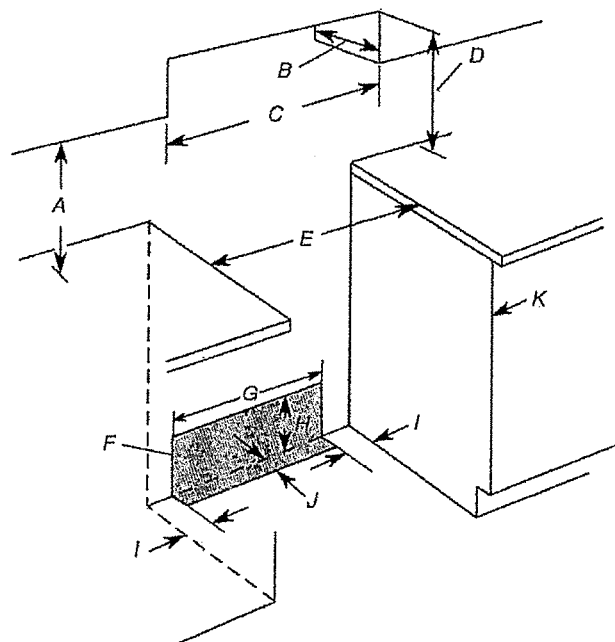
NOTE: When installed in a slide-in cutout, the front of oven door may protrude beyond the base cabinet.

Slide-in Cutout



- A. 18" (45.7 cm) upper side cabinet to countertop
- B. 13" (33 cm) max. upper cabinet depth
- C. 30" (76.2 cm) min. opening width
- D. For minimum clearance to top of cooktop, see NOTE*.
- E. In U.S.A.: 30" (76.2 cm) min. opening width
In Canada: 31" (78.7 cm) min. opening width
- F. The shaded area is recommended for installation of grounded outlet.
- G. 13 1/8" (33.3 cm)
- H. 7 1/16" (19.5 cm)
- I. 4 1/16" (12.2 cm)
- J. 3 1/16" (9.4 cm) or measurement of L, whichever is greater
- K. Cabinet door or hinges should not extend into the cutout.
- L. Remaining counter depth should not exceed 2 1/4" (5.7 cm)

Freestanding cutout



- A. 18" (45.7 cm) upper side cabinet to countertop
- B. 13" (33 cm) max. upper cabinet depth
- C. 30" (76.2 cm) min. opening width
- D. For minimum clearance to top of cooktop, see NOTE*.
- E. In U.S.A.: 30" (76.2 cm) min. opening width
In Canada: 31" (78.7 cm) min. opening width
- F. The shaded area is recommended for installation of grounded outlet.
- G. 13 1/8" (33.3 cm)
- H. 7 1/16" (19.5 cm)
- I. 4 1/16" (12.2 cm)
- J. 3 1/16" (9.4 cm)
- K. Cabinet door or hinges should not extend into the cutout.

***NOTE:** 24" (61.0 cm) minimum when bottom of wood or metal cabinet is shielded by not less than 1/4" (0.64 cm) flame retardant millboard covered with not less than No. 28 MSG sheet steel, 0.015" (0.4 mm) stainless steel, 0.024" (0.6 mm) aluminum or 0.020" (0.5 mm) copper.

30" (76.2 cm) minimum clearance between the top of the cooking platform and the bottom of an uncovered wood or metal cabinet.

KitchenAid®

French Door w/Ice Dispenser Refrigerator

PRODUCT MODEL NUMBERS

KRFC704F KRFC604F

Electrical: A 115-volt, 60 Hz, AC-only 15- or 20-amp fused, grounded electrical supply is required. It is recommended that a separate circuit serving only your refrigerator and approved accessories be provided. Use an outlet that cannot be turned off by a switch. Do not use an extension cord.

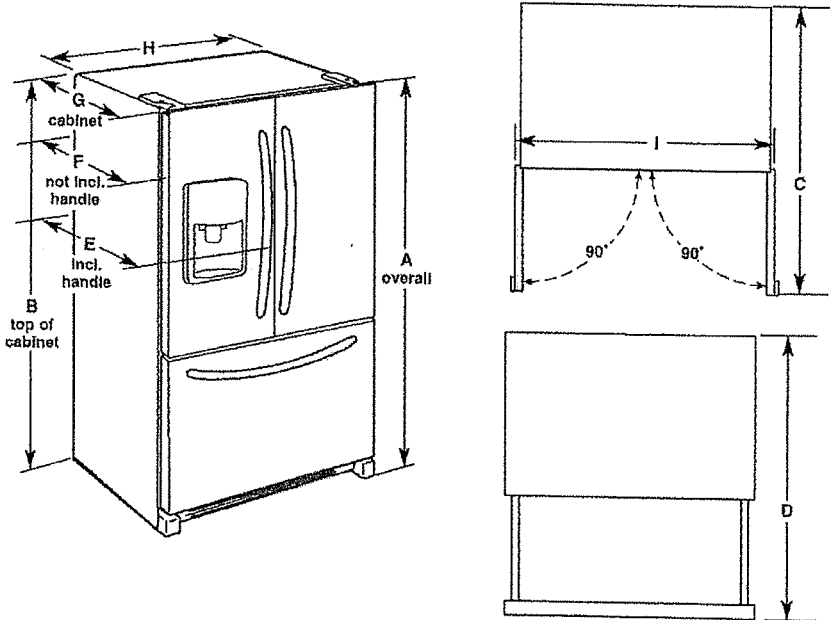
Water: A cold water supply with water pressure between 35 and 120 psi (241 and 827 kPa) is required to operate the water dispenser and ice maker. If you have questions about your water pressure, call a licensed, qualified plumber.

NOTE: If the water pressure is less than what is required, the flow of water from the water dispenser could decrease or ice cubes could be hollow or irregular shaped.

Reverse Osmosis Water Supply:
IMPORTANT: The pressure of the water supply coming out of a reverse osmosis system going to the water inlet valve of the refrigerator needs to be between 35 and 120 psi (241 and 827 kPa).

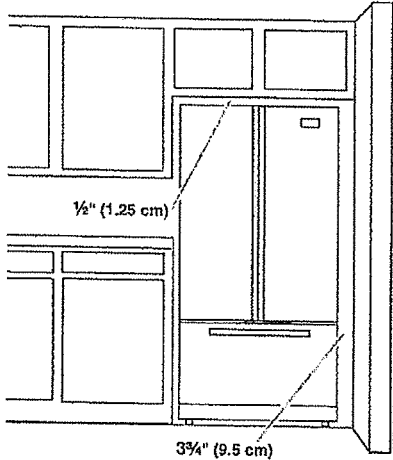
If a reverse osmosis water filtration system is connected to your cold water supply, the water pressure to the reverse osmosis system needs to be a minimum of 40 to 60 psi (276 to 414 kPa).

PRODUCT DIMENSIONS



Model Size	Height - Overall "A"	Height - Top of Cabinet "B"	Depth - Door Open 90° "C"	Depth - Drawer Open "D"	Depth - With Handles "E"	Depth - Without Handles "F"	Depth - Cabinet Only "G"	Width - Cabinet "H"	Width - Door Open 90° "I"
23.8 cu. ft.	71 1/4" (182.6 cm)	70 7/8" (180.0 cm)	43 3/4" (111.1 cm)	45 1/4" (116.5 cm)	31 1/2" (80.0 cm)	28 7/8" (73.3 cm)	24 9/16" (61.9 cm)	35 5/8" (90.5 cm)	43 3/4" (110.8 cm)

LOCATION REQUIREMENTS



IMPORTANT: This refrigerator is designed for indoor, household use only. To ensure proper ventilation for your refrigerator, allow for a 1/2" (1.25 cm) of space on each side and at the top. Allow for a 1" (2.54 cm) space behind the refrigerator. If your refrigerator has an ice maker, allow extra space at the back for the water line connections. When installing your refrigerator next to a fixed wall, leave a 3 3/4" (9.5 cm) minimum space between the refrigerator and wall to allow the door to swing open.

NOTE: This refrigerator is intended for use in a location where the temperature ranges from a minimum of 55°F (13°C) to a maximum of 110°F (43°C). The preferred room temperature range for optimum performance, which reduces electricity usage and provides superior cooling, is between 60°F (15°C) and 90°F (32°C). It is recommended that you do not install the refrigerator near a heat source, such as an oven or radiator.

192

KitchenAid®
FOR THE WAY IT'S MADE.®
Undercounter Dishwasher

PRODUCT MODEL NUMBERS

KDFE104D, KDFE304D, KDTE204D, KDTE404D, KDTE704D, KDTM354D, KDFE204E, KDFE454C, KDTE104E, KDTE204E, KDTE254E, KDTM354E, KDTM384E, KDTM404E, KDTM504E, KDTM704E, KDTM804E

Electrical Requirements: 120-volt, 60 Hz, AC-only, 15- or 20-amp. fused electrical supply. Copper wire only. A time delay fuse or circuit breaker and separate circuit is recommended.

If direct wiring dishwasher: Use flexible, armored or nonmetallic, sheathed copper wire with grounding wire that meets the wiring requirements for your home and local codes and ordinances. Use a UL Listed or CSA Approved conduit connector.

If connecting dishwasher with a power supply cord:

Use power supply cord kit (Part Number 4317824) marked for use with dishwashers. Follow the kit instructions for installing the power supply cord.

Power supply cord must plug into a grounded 3 prong outlet located in the cabinet next to the dishwasher opening. Outlet must meet all local codes and ordinances.

Water Supply Requirements: A hot water line with 20 to 120 psi (138 to 862 kPa) water pressure. Water temperature must be 120°F (49°C) water at dishwasher. Use 3/8" O.D. copper tubing with compression fitting or flexible braided water supply line

Note: 1/2" minimum plastic tubing is not recommended.

Use a 90° elbow with 3/4" hose connection with rubber washer (Part Number W10273460). Do not solder within 6" (15.2 cm) from water inlet valve.

Drain Requirements: A new drain hose is supplied with your dishwasher. If this is not long enough, use a new drain hose with a maximum length of 12' (3.7 m) (Part Number 3385556) that meets all current AHAM/IAPMO test standards, is resistant to heat and detergent, and fits the 1" (2.5 cm) drain connector of the dishwasher.

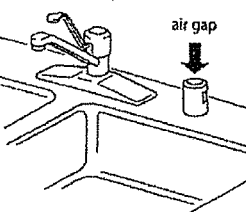
Make sure to connect the drain hose to waste tee or disposer inlet above drain trap in house plumbing and 20" (50.8 cm) minimum above the floor. It is recommended

that the drain hose either be looped up and securely fastened to the underside of the counter or be connected to an air gap.

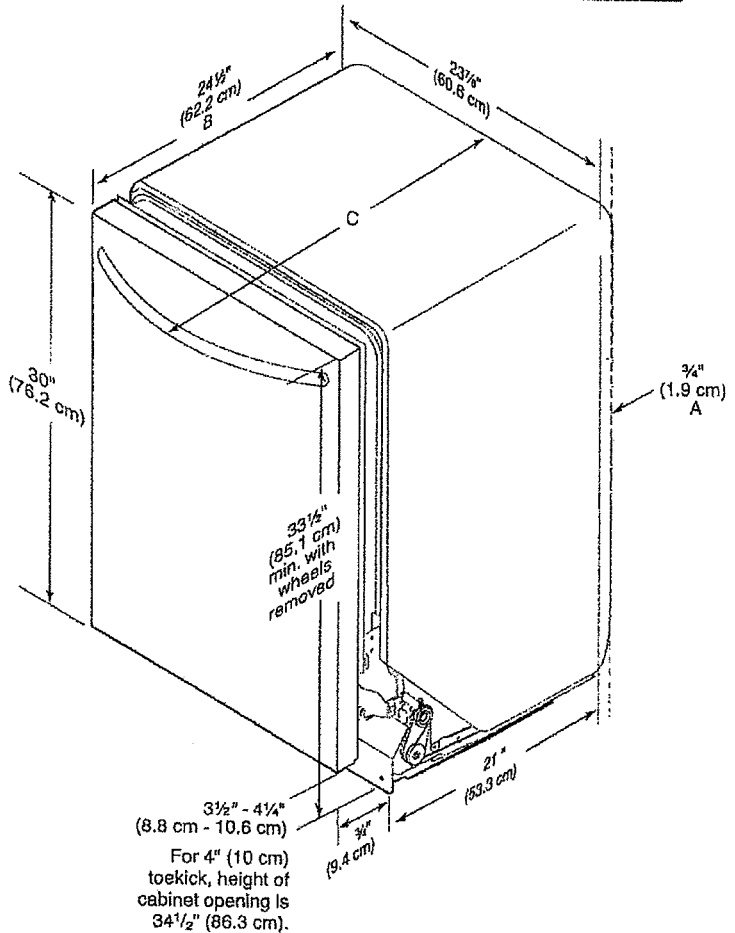
Make sure to use an air gap if the drain hose is connected to house plumbing lower than 20" (50.8 cm) above subfloor or floor.

Use 1/2" (1.3 cm) minimum I.D. drain line fittings.

If required, the air gap should be installed in accordance with the air gap installation instructions. When connecting the air gap, a rubber hose (not provided) will be needed to connect to the waste tee or disposer inlet.



PRODUCT DIMENSIONS

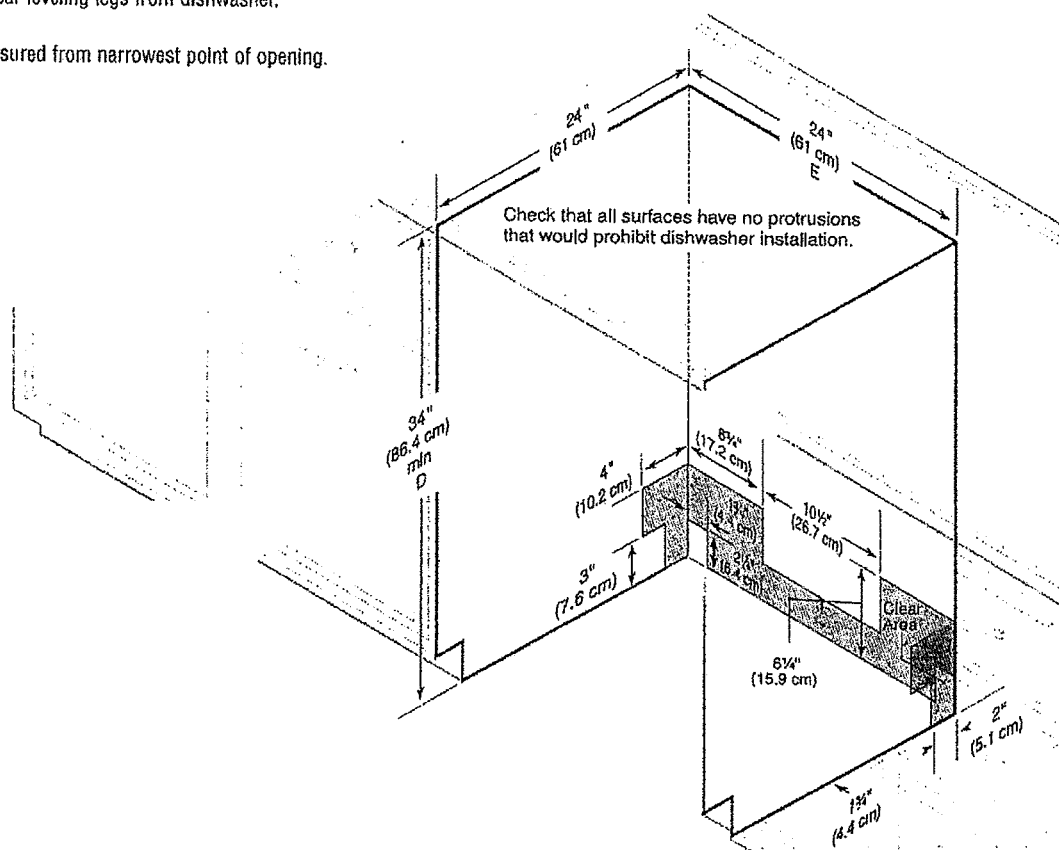


- A. Insulation may be compressed (not used on all models).
- B. For panel-ready models, dishwasher depth is 24" (60 cm) not including the 3/4" (1.9 cm) custom door panel.
- C. Door handles may protrude forward of the face of the dishwasher; varies by model.

CABINET CUTOUT DIMENSIONS

*Measure from the lowest point on the underside of the countertop. May be reduced to 33½" (85.1 cm) by removing the rear leveling legs from dishwasher.

**Minimum, measured from narrowest point of opening.



FRONT LOAD WASHERS

WM3770HVA

Performance

- 5.2 cu.ft. Ultra Large Capacity with NeveRust™ Stainless Steel Drum (IEC)
- DirectDrive™ Motor for the Ultimate in Durability and Reliability with 10 Year Warranty
- 10° TiLTub™ for Easy Reach into the Rear of the Drum
- 1300 RPM Powerful Spin for Efficient Water Extraction

Intelligent Fabric Care

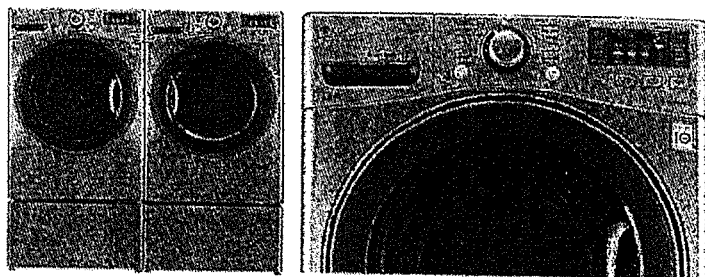
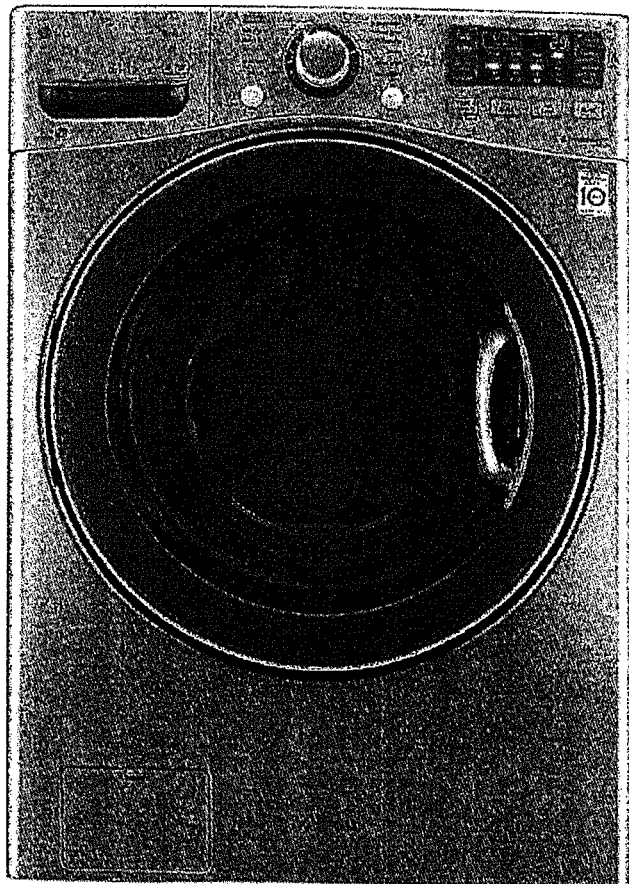
- TurboWash™ Technology
- Steam Technology
- ASC Certified Allergiene™ Cycle
- NSF Certified Sanitary Cycle
- ColdWash™ Technology
- 6Motion™ Technology
- NFC Tag On
- SmartDiagnosis™
- TrueBalance™ Anti-Vibration System
- Magnet Ventilation
- SenseClean™ System for Intelligent Fabric Care
- 12 Washing Programs and 5 Temperature Settings
- Delay Wash up to 19 hours for Washing Convenience

Style and Design

- Upfront Electronic Control Panel with Dual LED Display and Dial-A-Cycle™
- Large Chrome Rimmed Glass Door with Dark Blue Tinted Cover

Technology Benefits

- LoDecibel™ Quiet Operation
- Highly Energy and Water Efficient



Graphite Steel



Fast Forward your Laundry

Tired of spending hours on end finishing your family's laundry? Now, those days are gone. LG's revolutionary TurboWash™ Technology allows you to save 20 minutes on larger loads, with outstanding cleaning performance! It's like pressing the fast forward button on your laundry.

Deep Clean with Steam

LG Steam Technology penetrate fabric to remove soil and enhance cleaning results, it also removes common household allergens. The Allergiene™ cycle gently removes over 95% of common household allergens, like dust mites and pet dander from even the most delicate fabrics. It's so effective it's certified by the Asthma Society of Canada (ASC).

More Free Time

Towers of towels, piles of sweatshirts, and a mountain of jeans? Go for it. The ultra large capacity (5.2 cu.ft.) washer lets you do more laundry in fewer loads. That's time well saved.

Count On It

When you buy a washer, you don't want to worry that it won't last. Because the DirectDrive™ Motor uses fewer moving parts and operates more efficiently, LG confidently backs the motor with a 10-year warranty.

NFC Tag On

Easily change and customize cycles with a simple tap of a smart phone app. Can't find a cycle you need? There's an app for that. Your laundry just got a little bit smarter.

Call, Connect, Resolve

SmartDiagnosis™ uses self-diagnosing technology that can communicate 24/7 with LG customer service over the telephone providing you with comfort and reliability.

All the Right Moves

With 6Motion™ Technology, each wash cycle combines up to 6 different wash motions to provide a revolutionary cleaning experience and ultimate fabric care.

PRODUCT FEATURES

TYPE	
Front Loader	•
Design Lock	Front Control
Intelligent Electronic Controls with Dual LED Display	•
Dial-A-Cycle™	•
Capacity	IEC 5.2 cu.ft.
TYPE	
Energy Star	•
WASH PROGRAMS	
12 Programs	Cotton/Normal, Bulky/Large, Perm. Press, Delicates, Download, Speed Wash, Tub Clean, Sanitary, Allergiene™, Heavy Duty, Towels, Bright Whites™
10 Options	Prewash, Rinse+Spin, TurboWash™, Extra Rinse, Child Lock, ColdWash™, Steam, FreshCare™, Delay Wash (up to 19 hours), Add Garment
5 Wash/Rinse Temperatures	Extra Hot, Hot, Warm, Cold, Tap Cold (All Cold Rinses)
5 Spin Speeds	Extra High (1300 max), High, Medium, Low, No Spin
No. of Water Levels	Automatically adjusts to the size of load
No. of Soil Levels	5
FABRIC CARE FEATURES	
TurboWash™	•
Steam	•
Allergiene™ Cycle	•
ColdWash™	•
6Motion™	•
SenseClean™ System	•
CONVENIENCE FEATURES	
4 Tray Dispenser	Prewash, Main Wash (with liquid detergent cup), Bleach, Fabric Softener
TrueBalance™ Anti-Vibration System	•
NFC Tag On	•
SmartDiagnosis™	•
Load Sense	•
Status Indicator(s)	•
End of Cycle Signal	•

Child Lock	•
Auto Suds Removal	•
Forced Drain System	•
Internal Water Heater	•
Easy Loading TITub™	•
Leveling Legs	4 Adjustable Legs
LoDecibel™ Quiet Operation	•
MOTOR AND AGITATOR	
Motor Type / Motor Speed / Axis	Direct Drive / Variable / Horizontal
MATERIALS AND FINISHES	
NeveRust™ Stainless Steel Drum	•
Cabinet	Painted Steel
Control Panel	Plastic
Top Plate	Painted
Transparent Glass Door	•
Door Rim	Large Chrome Rimmed Glass Door with Dark Blue Tinted Cover
Available Colours	Graphite Steel (V)
POWER SOURCE	
Ratings / Electrical Requirements / Type	UL Listed / 120V, 10 Amps / Electric
OPTIONS	
Pedestal	WDP4V
Pedestal (WxHxD)	27" x 13 3/5" x 25 2/5"
Stacking Kit	KSTK1
DIMENSIONS	
Product (WxHxD)	27" x 38 11/16" x 29 3/4" (51" D with door open)
Carton (WxHxD)	29 1/2" x 43 5/16" x 31 5/16"
Weight (Product/Carton)	202.8 lbs/224.8 lbs
UPC CODES	
WM3770HVA (Washer)	772454 067594
WDP4V (Pedestal)	772454 052866
KSTK1 (Stacking Kit)	772454 059896
WARRANTY	
	1 Year Parts and Labour
	5 Years Part on Drum
	10 Years Part on DirectDrive™ Motor



LG ELECTRONICS CANADA INC.

20 Norelco Drive, North York, Ontario M9L 2X6

Tel: 647-253-6300 | LG.com

Customer Service & Parts

1-888-542-2623

Design, features and specifications are subject to change without notice.
Non-metric weights and measurements are approximate.
All trademarks are property of their respective owners.

Printed in August 2016

192

Ultra Large Capacity SteamDryer™ w/ NFC Tag On

DLEX3570 /DLGX3571



ALWAYS STAY EFFICIENT.

Efficiency can mean a lot nowadays, and this dryer knows it. Its ultra large capacity will handle extra-large loads, so you finish your laundry faster. The Intelligent Electronic Controls with Dual LED Display make it easier to get the settings right, so you can just "set it and go." Plus, the Sensor Dry System will detect the level of moisture in the fabric and automatically adjust drying time and temperature. If you appreciate efficiency, so does this dryer.

SPECIFICATIONS

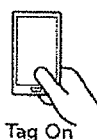
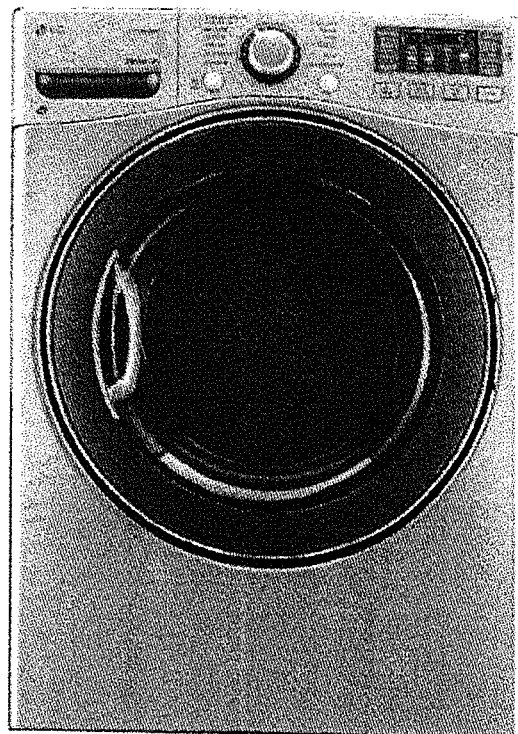
- 7.4 cu. ft. Ultra Capacity with Alcosta Steel Drum
- 12 Drying Programs
- 5 Temperature Settings

STYLISH DESIGN

- Upfront Electronic Control Panel with Dual LED Display and Dial-A-Cycle™
- Large Chrome Rimmed Glass Door with Dark Blue Tinted Cover
- Reversible Door
- Stackable with Matching Washer (Stacking Kit sold separately)
- Optional Matching Drawer Pedestal

INNOVATIONS

- TrueSteam™ Technology
- SteamFresh™ Cycle
- SteamSanitary™ Cycle
- ReduceStatic™ Option
- EasyIron™ Option
- Sensor Dry System
- Precise Temperature Control with Variable Heat Source
- LoDecibel™ Quiet Operation
- NFC Tag On
- SmartDiagnosis™
- 3 Minute Installation Check
- FlowSense™ Duct Clogging Indicator
- Wrinkle Care Option
- Anti-Bacterial Cycle
- Damp Dry Signal



SMART DIAGNOSIS™

7.4 cu.ft. Ultra Large Capacity

Do laundry a little less often. With 7.4 cubic feet of capacity, this dryer handles really large loads, saving you time and energy.

SteamSanitary™ Cycle

You probably wish you could clean your throw pillows or children's toys. With the SteamSanitary™ Cycle, you can. It uses steam to safely sanitize delicate items right in the dryer.

NFC Tag On

Easily change and customize cycles with a simple tap of a smart phone app. Can't find a cycle you need? There's an app for that. Your laundry just got a little bit smarter.

192

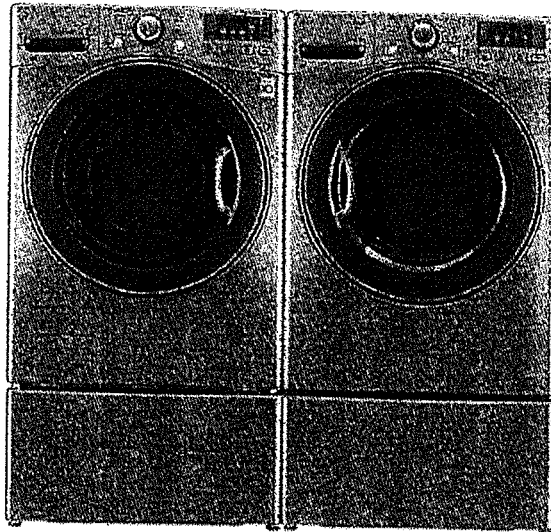
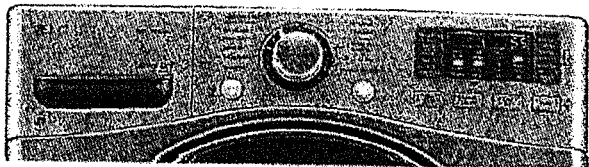
Ultra Large Capacity SteamDryer™ w/ NFC Tag On

DLEX3570_/DLGX3571_



CAPACITY		
Capacity	7.4 cu. ft.	
APPEARANCE		
Design Look	Front Control	
Intelligent Electronic Controls with Dual LED Display		
Dial-A-Cycle™		
DRYING PROGRAMS		
No. of Programs	12	
Programs (Sensor Dry)	Cotton/Normal, Perm. Press, Towels, Delicates, Small Load, Heavy Duty, Bulky/Large, SteamFresh™, SteamSanitary™, Download	
Programs (Manual Dry)	Speed Dry, Air Dry	
No. of Options	10	
Options	More Time, Less Time, Custom Program, Damp Dry Signal, Wrinkle Care, Child Lock, ReduceStatic™, EasyIron™, Rack Dry, End of Cycle Signal	
Temperature Settings	High, Medium High, Medium, Low, Ultra Low	
Drying Levels	Very Dry, More Dry, Normal Dry, Less Dry, Damp Dry	
Manual Dry Times	60 min., 50 min., 40 min., 30 min., 20 min., More Time/Less Time	
FABRIC CARE FEATURES		
SteamFresh™ Cycle		
SteamSanitary™ Cycle		
ReduceStatic™ Option		
EasyIron™ Option		
Sensor Dry		
Precise Temperature Control and Variable Heater		
CONVENIENCE FEATURES		
NFC Tag On		
LoDecibel™ Quiet Operation		
SmartDiagnosis™		
FlowSense™ Duct Clogging Indicator		
Wrinkle Care Option		
Remaining Time Display/Status Indicator(s)		
End of Cycle Signal		
Child Lock		
Drying Rack		
Drum Light		
Reversible Door		
Leveling Legs		
Venting Option	4 Adjustable Legs	
3 Minute Installation Check	Electric: 4 Way Venting / Gas: 3 Way Venting	
MATERIALS AND FINISHES		
Alcorta Steel Drum		
Cabinet		Painted Steel
Control Panel		Plastic
Top Plate		Painted Steel
Transparent Glass Door		
Door Rim		Large Chrome Rimmed Glass Door with Dark Blue Tinted Cover
Available Colors		White (W), Graphite Steel (V)
POWER SOURCE		
Ratings		CSA Listed
Electrical Requirements	120V, 15 Amps (Gas) / 240V, 30 Amps (Electric)	
Type		Gas/Electric
OPTIONS		
Pedestal		WDP4W/WDP4V
Pedestal (WxHxD)		27" x 13 3/5" x 28 2/5"
Stacking Kit		KSTK1
LP Conversion Kit		383EEL3002D
Side Venting Kit		3911EZ9131X
DIMENSIONS		
Product (WxHxD)		27" x 38 11/16" x 29 3/4"
		(51" D with door open)
Carton (WxHxD)		29 1/2" x 42 1/4" x 31 1/4"
Weight (Product/Carton)		136lbs. / 155lbs.
LIMITED WARRANTY		
		1 Year Parts and Labor
UPC CODES		
DLEX3570V Electric Dryer (Graphite Steel)		048231 014229
DLGX3571V Gas Dryer (Graphite Steel)		048231 014236
DLEX3570W Electric Dryer (White)		048231 014199
DLGX3571W Gas Dryer (White)		048231 014205
WM3570HVA Washer (Graphite Steel)		048231 014083
WM3570HWA Washer (White)		048231 014052
WDP4V Pedestal (Graphite Steel)		048231 011198
WDP4W Pedestal (White)		048231 011211
KSTK1 Stacking Kit (Chrome)		048231 013024

Optional washer & pedestals sold separately



LG Electronics U.S.A., Inc.

1000 Sylvan Avenue Englewood Cliffs, NJ 07632

Customer Service and Technical Support: (800) 243-0000

LG.com

Design, features and specifications are subject to change without notice. Non-metric weights and measurements are approximate.

© 2014 LG Electronics USA, Inc. All rights reserved. "LG Life's Good" is a registered trademark of LG Corp. All other product and brand names are trademarks or registered trademarks of their respective companies. 4/10/14