

GOEMANS APPLIANCES

1-877-463-6267

HST # 105167993 WWW.GOEMANS.COM
Find us on Facebook at www.facebook.com/GoemansAppliances

PACKING SLIP

HB00012920-1

Salesperson: JASON NG
Purchase Date: 11/18/16
Invoice Finished Date:
Delivery/Pickup Date: Dec 19, 2016
Invoice Type: VBL
Date Printed: Nov 18, 2016
Page: 1

ONLINE BANKING ACCOUNT

BILL TO: 6476067149

KARZAI, ABDULSAMI & ABDULWALI
1028 BYRON ST NORTH
LOT 3L
WHITBY, ON L1N 7H9

TEL# (647) 606-7149 BUS# (416) 439-7687

Directions: BROCK & ROSSLAND

SHIP TO: 6476067149

KARZAI, ABDULSAMI & ABDULWALI
1028 BYRON ST NORTH
LOT 3L
WHITBY, ON L1N 7H9

TEL# (647) 606-7149 BUS# (416) 439-7687

QTY	LOC	MODEL #	SERIAL #	COLOUR	BRAND - DESCRIPTION
1		RF23HCEDBSR/AA		STAINLES	SAM, REBC3: REFRIGERATOR, FRENCH 3-DOOR, C
1		YKSEG700ESS		STAINLES	23 CU.FT BM FD FRIDGE, IW DISP, COUNTER DEPTH
1		YKMHS120ES		STAINLES	KIT, RAEF: RANGE, ELECTRIC, FREE-STANDING
1		KDTE204ESS		STAINLES	FNT CTRL RANGE,CERAN,6.4 CU. FT,AQUALIFT S/C,TRU C
					KIT, MIOR: MICROWAVE, OVER-THE-RANGE
					2.0 CU.FT,1,000 WATTS,300 CFM,10 POWER LEVELS,3-SP
					KIT, DISIC: DISHWASHER, INTEGRATED, COLOUR
					46DB,6CYC,6OPT,3RD RCK,14 PL STNG,UPR STN GLD RK
		PART# W10574777 REQUIRED FOR INSTALLATION (EXTRA CHARGE).			
		SPP 4 YR EXT GOLD - 4 APP - \$3500-4999.99			
		Model #	Mfg Wty		
			# of Months		
		YKMHS120ES	12		
		Payment		VISA	

- All products remain the property of Goemans until paid in full.
- Removal of old appliances at owner's risk and must be disconnected.
- Please refer to delivery/installation brochures for important details.
- All authorized returned products will be subject to a restocking charge.
- Interest of 18% per annum will be charged on overdue accounts.
- Upon delivery customer agrees to accept service in accordance with manufacturer's warranty.
- This sales invoice is based on delivery within 12 months from date of purchase. After 12 months (or if market conditions adversely change) Goemans reserves the right to review pricing/delivery on this order and offer our customers options to accommodate these changes. Any & all date sensitive supplier promotions are exempt from the 12 month price guarantee and must be taken by the promotional delivery deadline.

WHITE CUSTOMER COPY

PINK GOEMANS COPY

GOEMANS APPLIANCES

1-877-463-6267

HST# 105167993 WWW.GOEMANS.COM
Find us on Facebook at www.facebook.com/GoemansAppliances

PACKING SLIP

HB00012920-1

Salesperson: JASON NG
Purchase Date: 11/18/16
Invoice Finished Date:
Delivery/Pickup Date: Dec 19, 2016
Invoice Type: VBL
Date Printed: Nov 18, 2016
Page: 1

ONLINE BANKING ACCOUNT

BILL TO: 6476067149

KARZAI, ABDULSAMI & ABDULWALI
1028 BYRON ST NORTH
LOT 3L
WHITBY, ON LIN 7H9

TEL# (647) 606-7149 BUS# (416) 439-7687

Directions: BROCK & ROSSLAND

SHIP TO: 6476067149

KARZAI, ABDULSAMI & ABDULWALI
1028 BYRON ST NORTH
LOT 3L
WHITBY, ON LIN 7H9

TEL# (647) 606-7149 BUS# (416) 439-7687

QTY	LOC	MODEL #	SERIAL #	COLOUR	BRAND - DESCRIPTION
1		RF23HCEDBSR/AA		STAINLES	SAM, REBC3: REFRIGERATOR, FRENCH 3-DOOR, C
1		YKSEG700ESS		STAINLES	23 CU.FT BM FD FRIDGE, IW DISP, COUNTER DEPTH
1		YKMHS120ES		STAINLES	KIT, RAEF: RANGE, ELECTRIC, FREE-STANDING
1		KDTE204ESS		STAINLES	FNT CTRL RANGE, CERAN, 6.4 CU. FT, AQUALIFT S/C, TRU C
					KIT, MIOR: MICROWAVE, OVER-THE-RANGE
					2.0 CU.FT, 1,000 WATTS, 300 CFM, 10 POWER LEVELS, 3-SP
					KIT, DISIC: DISHWASHER, INTEGRATED, COLOUR
					46DB, 6CYC, 6OPT, 3RD RCK, 14 PL STNG, UPR STN GLD RK
		PART# W10574777 REQUIRED FOR INSTALLATION (EXTRA CHARGE).			
		SPP 4 YR EXT GOLD - 4 APP - \$3500.4999.99			
		Model #	Mfg Wty		
			# of Months		
		YKMHS120ES	12		
		Payment		VISA	

- All products remain the property of Goemans until paid in full.
- Removal of old appliances at owner's risk and must be disconnected.
- Please refer to delivery/installation brochures for important details.
- All authorized returned products will be subject to a restocking charge.
- Interest of 18% per annum will be charged on overdue accounts.
- Upon delivery customer agrees to accept service in accordance with manufacturer's warranty.
- This sales invoice is based on delivery within 12 months from date of purchase. After 12 months (or if market conditions adversely change) Goemans reserves the right to review pricing/delivery on this order and offer our customers options to accommodate these changes. Any & all date sensitive supplier promotions are exempt from the 12 month price guarantee and must be taken by the promotional delivery deadline.

WHITE CUSTOMER COPY

PINK GOEMANS COPY

RF23HCEDBSR

22.5 cu. ft. Counter-Depth French Door Refrigerator with CoolSelect Pantry

Features

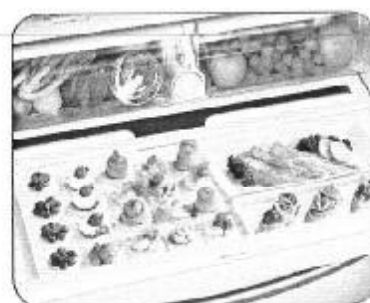
- 3-Door Counter-Depth Design
- Large Capacity – 22.5 cu. ft.
- Twin Cooling Plus® System
- ENERGY STAR® Compliant
- Ice Master Ice Maker in the Refrigerator
- CoolSelect Pantry® with Temperature Control
- Premium External Filtered Water and Ice Dispenser
- High-Efficiency LED Lighting
- EZ-Open Handle on Freezer Door
- Adjustable Shelf for Tall, Oversized Items
- Two Humidity-Controlled Crispers
- Tempered Glass Spill-Proof Shelves
- Auto Pull-Out Upper Freezer Drawer
- Easy-to-Access Water Filter

Convenience

- Door Alarm
- Water Filter Indicator
- Child Lock



Ice Master



CoolSelect Pantry with Temperature Control

Available Colour:



Stainless Steel

Signature Features

SLEEK, BUILT-IN LOOK

- Stylish, counter-depth design allows for more work space in the kitchen.
- Sleek, built-in look enhances overall kitchen design.

TWIN COOLING PLUS

- Refrigerator is kept at higher humidity levels to keep perishable fruits and vegetables fresher longer.*
- Freezer air is kept drier for less freezer burn and better tasting frozen foods.
- Fruits and veggies are no longer limited to the crispers. Produce can be placed anywhere in the fresh food compartment and retain ultimate freshness.

*When compared to Samsung fridge models that do not have triple cooling.

ICE MASTER

- Produces up to 10 lbs. of ice per day and stores 4.2 lbs.
- Space-saving design leaves more room in the refrigerator.

COOLSELECT PANTRY

- Provides additional temperature control for your food storage needs with Deli, Fresh and Chilled options.



Ranked "Highest in Customer Satisfaction
with French door Refrigerators"
in 2014 by J.D. Power and Associates.

SAMSUNG

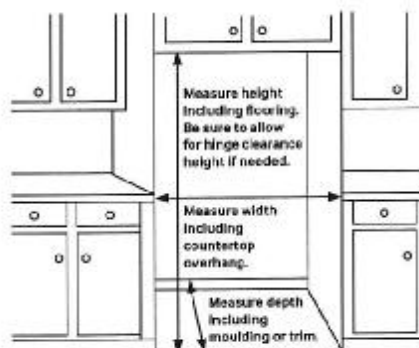
RF23HCEDBSR

22.5 cu. ft. Counter-Depth French Door Refrigerator with CoolSelect Pantry

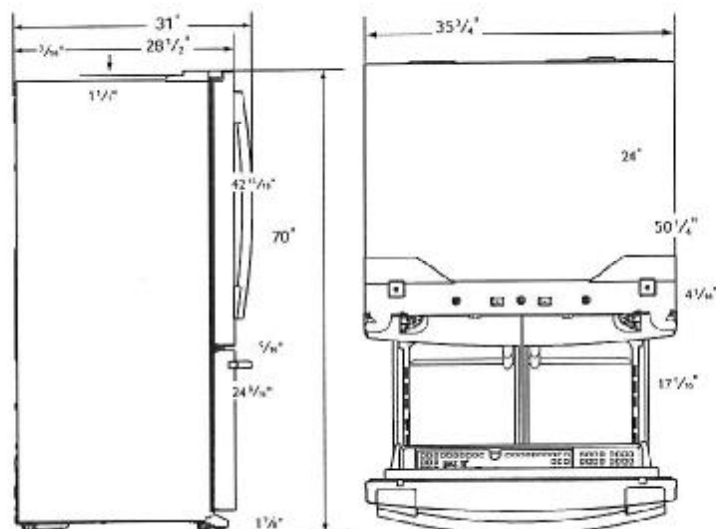
Installing Your Refrigerator

1. Measure the height, width and depth of the opening, making sure to include baseboards, moulding tile, countertop overhang, etc. Check to be sure there is enough room to open the door (consider walls, islands or other obstacles when measuring).
2. Refer to illustration below to determine dimensions.
3. Allow 2" of clearance on hinge side of refrigerator when installing next to a wall where handle may make contact.
4. Allow 1" minimum clearance at rear for proper air circulation and water/electrical connections. Allow a 3/8" minimum clearance at sides and top for ease of installation.
5. Ensure each door and entry way in the home is wide enough for the refrigerator to be moved through easily.

Please note: The following dimension and cut-out information is for planning purposes only. For complete installation details consult manual packed with product, or download manual online at samsung.com.



Dimensions



Total Capacity: 22.5 cu. ft.

Refrigerator: 15.7 cu. ft.

- Premium External Filtered Water and Ice Dispenser
- Ice Master Ice Maker
- CoolSelect Pantry with Temperature Control – Deli (41°F), Fresh (38°F) and Chilled (32°F) options
- 2 Humidity-Controlled Crispers
- 5 Tempered Glass Spill-Proof Shelves
- Adjustable Shelf for Tall, Oversized Items
- 6 Door Bins
 - Right Door: 3 Gallon Bins
 - Left Door: 3 Regular Bins
- High-Efficiency LED Lighting

Freezer: 6.8 cu. ft.

- EZ-Open Handle
- 1 Drawer Divider
- High-Efficiency LED Lighting

Accessories

Water Filter: HAF-CIN

Warranty

One (1) Year Parts and Labour on Refrigerator

Five (5) Years Parts and Labour on Sealed Refrigeration System Only*

Ten (10) Years Parts and Five (5) Years Labour on Digital Inverter Compressor

*Compressor, evaporator, condenser, drier, connecting tubing

Product Dimensions & Weight

Dimensions (WxHxD with hinges, handles and doors):

35 3/4" x 70" x 31"

Dimensions (WxHxD without hinges and door):

35 3/4" x 68 7/8" x 24"

Dimensions (WxHxD with hinge and door, no handle):

35 3/4" x 70" x 28 1/2"

Weight: 297.62 lbs.

Shipping Dimensions & Weight (WxHxD)

Dimensions: 38 1/4" x 76 5/8" x 31 1/4"

Weight: 321.87 lbs.

Colour	Model #	UPC Code
Stainless Steel	RF23HCEDBSR	887276966106

SAMSUNG

Samsung received the highest numerical score for ranges/cooktops/ovens, microwaves, and french door refrigerators (3-way tie) in the proprietary J.D. Power and Associates 2014 Kitchen Appliance Satisfaction Study. The 2014 Kitchen Appliance Satisfaction Study is based on more than 3,200 evaluations from customers who purchased cooktops/ranges/ovens; more than 2,100 evaluations from customers who purchased over-the-range microwaves; and more than 6,400 evaluations from customers who purchased refrigerators during the past 24 months. The study was fielded from January through March 2014. Actual colour may vary. Design, specifications, and colour availability are subject to change without notice. Non-metric weights and measurements are approximate. © 2014 Samsung Electronics Canada Inc. All rights reserved. Samsung is a registered trademark of Samsung Electronics Co., Ltd., used with permission.

30" (76.2 cm) Freestanding Electric Range

PRODUCT MODEL NUMBERS

KSEB900E **KSEG700E** KSIB900E

Electrical: If codes permit and a separate ground wire is used, it is recommended that a qualified electrical installer determine that the ground path and wire gauge are in accordance with local codes.

Do not use an extension cord.

To properly install your range, you must determine the type of electrical connection you will be using and follow the instructions provided for it here.

- Range must be connected to the proper electrical voltage and frequency as specified on the model/serial number rating plate. The model/serial rating plate is located behind the oven door on the top right-hand side of the oven frame.
- This range is manufactured with the neutral terminal connected to the cabinet. Use a 3-wire, UL listed, 40- or 50-amp power supply cord (pigtail) (see following Range Rating chart). If local codes do not permit ground through the neutral, use a 4-wire power supply cord rated at 250 volts, 40 or 50 amps and investigated for use with ranges.

Range Rating*		Specified Rating of Power Supply Cord Kit and Circuit Protection
120/240 Volts	120/208 Volts	Amps
8.8 - 16.5 KW	7.8 - 12.5 KW	40 or 50**
16.6 - 22.5 KW	12.6 - 18.5 KW	50

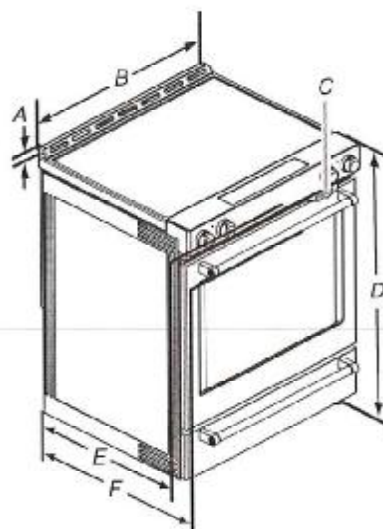
*The NEC calculated load is less than the total connected load listed on the model/serial rating plate.

**If connecting to a 50-amp circuit, use a 50-amp rated cord with kit. For 50-amp rated cord kits, use kits that specify use with a nominal 1 $\frac{3}{4}$ " (34.9 mm) diameter connection opening.

- A circuit breaker is recommended.

PRODUCT DIMENSIONS

This manual covers several models. Your model may appear different from the models depicted. Dimensions given are maximum dimensions across all models.



A. 1 $\frac{3}{8}$ " (3.0 cm) height from cooktop to top of vent.

B. 29 $\frac{7}{8}$ " (75.9 cm)

C. Model/serial number plate (located behind the oven door on the top right-hand side of the oven frame)

D. 35" (91.4 cm) height to top of cooktop edge with leveling legs screwed all the way in*

E. 28 $\frac{5}{8}$ " (71.9 cm) max. depth from front of console to back of range.

F. 28 $\frac{1}{2}$ " (73.3 cm) max. depth from handle to back of range.

IMPORTANT: Range must be level after installation. Follow the instructions in the "Level Range" section. Using the cooktop as a reference for leveling the range is not recommended.

*Range can be raised approximately 1" (2.5 cm) by adjusting the leveling legs.

CABINET OPENING DIMENSIONS

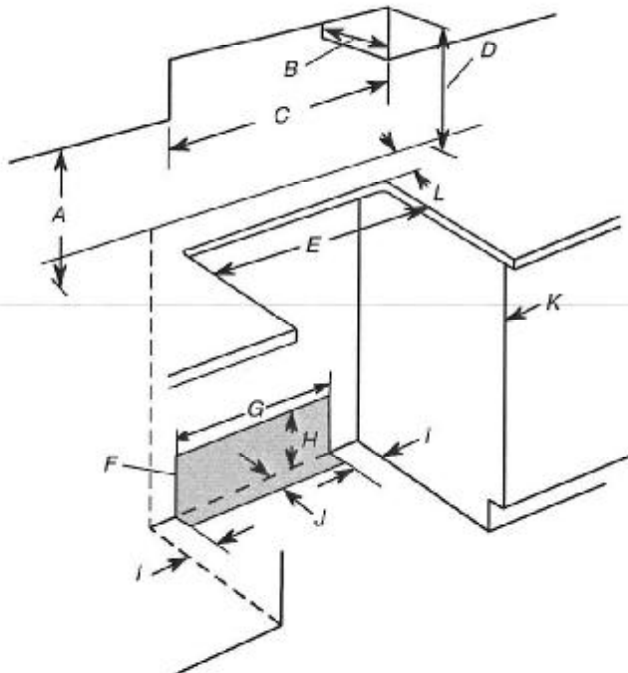
Cabinet opening dimensions shown are for 25" (64.0 cm) countertop depth, 24" (61.0 cm) base cabinet depth and 36" (91.4 cm) countertop height.

IMPORTANT: If installing a range hood or microwave hood combination above the range, follow the range hood or microwave hood combination installation instructions for dimensional clearances above the cooktop surface.

Range may be installed next to combustible walls with zero clearance.

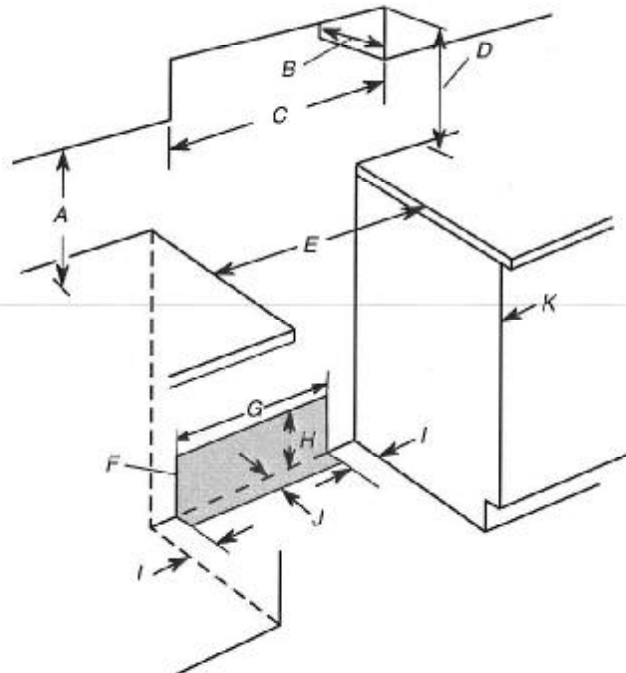
NOTE: When installed in a slide-in cutout, the front of oven door may protrude beyond the base cabinet.

Slide-in Cutout



- A. 18" (45.7 cm) upper side cabinet to countertop
- B. 13" (33 cm) max. upper cabinet depth
- C. 30" (76.2 cm) min. opening width
- D. For minimum clearance to top of cooktop, see NOTE*.
- E. In U.S.A.: 30" (76.2 cm) min. opening width
In Canada: 31" (78.7 cm) min. opening width
- F. The shaded area is recommended for installation of grounded outlet.
- G. 13 1/8" (33.3 cm)
- H. 7 1/8" (19.5 cm)
- I. 4 9/16" (12.2 cm)
- J. 3 1/8" (9.4 cm) or measurement of L, whichever is greater
- K. Cabinet door or hinges should not extend into the cutout.
- L. Remaining counter depth should not exceed 2 1/4" (5.7 cm)

Freestanding cutout



- A. 18" (45.7 cm) upper side cabinet to countertop
- B. 13" (33 cm) max. upper cabinet depth
- C. 30" (76.2 cm) min. opening width
- D. For minimum clearance to top of cooktop, see NOTE*.
- E. In U.S.A.: 30" (76.2 cm) min. opening width
In Canada: 31" (78.7 cm) min. opening width
- F. The shaded area is recommended for installation of grounded outlet.
- G. 13 1/8" (33.3 cm)
- H. 7 1/8" (19.5 cm)
- I. 4 9/16" (12.2 cm)
- J. 3 1/8" (9.4 cm)
- K. Cabinet door or hinges should not extend into the cutout.

*NOTE: 24" (61.0 cm) minimum when bottom of wood or metal cabinet is shielded by not less than 1/4" (0.64 cm) flame retardant millboard covered with not less than No. 28 MSG sheet steel, 0.015" (0.4 mm) stainless steel, 0.024" (0.6 mm) aluminum or 0.020" (0.5 mm) copper.

30" (76.2 cm) minimum clearance between the top of the cooking platform and the bottom of an uncovered wood or metal cabinet.

KitchenAid® Microwave Hood Combination

PRODUCT MODEL NUMBERS

KMHC319E

KMHP519E

KMHS120E

ELECTRICAL REQUIREMENTS

Required:

- A 120 volt, 60 Hz, AC only, 15- or 20-amp electrical supply with a fuse or circuit breaker.

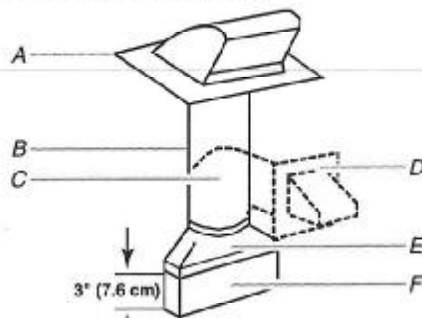
Recommended:

- A time-delay fuse or time-delay circuit breaker.
- A separate circuit serving only this microwave oven.

VENTING REQUIREMENTS

Rectangular to Round Transition:

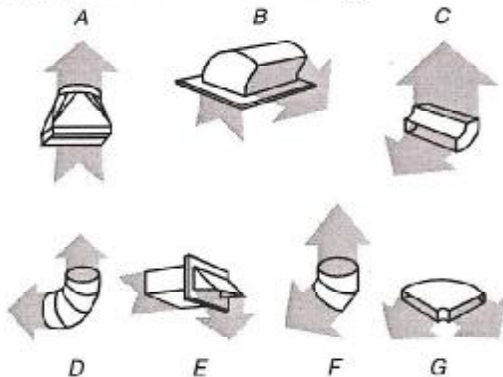
NOTE: The minimum 3" (7.6 cm) clearance must exist between the top of the microwave oven and the rectangular to round transition piece so that the damper can open freely and fully.



- A. Roof cap
- B. 6" (15.2 cm) min. diameter round vent
- C. Elbow (for wall venting only)
- D. Wall cap
- E. 3/4" x 10" to 6" (8.3 x 25.4 cm to 15.2 cm) rectangular to round transition piece
- F. Vent extension piece, at least 3" (7.6 cm) high

Recommended Standard Fittings

The following length equivalents are for use when figuring vent length. See the examples in "Recommended Vent Length."



- A. Rectangular to round transition piece: 3/4" x 10" to 6" = 5 ft (8.3 x 25.4 cm to 15.2 cm = 1.5 m)
- B. Roof cap: 3/4" x 10" = 24 ft (8.3 x 25.4 cm = 7.3 m)
- C. 90° elbow: 3" x 10" = 25 ft (8.3 x 25.4 cm = 7.6 m)
- D. 90° elbow: 6" = 10 ft (15.2 cm = 3 m)
- E. Wall cap: 3/4" x 10" = 40 ft (8.3 x 25.4 cm = 12.2 m)
- F. 45° elbow: 6" = 5 ft (15.2 cm = 1.5 m)
- G. 90° flat elbow: 3/4" x 10" = 10 ft (8.3 x 25.4 cm = 3 m)

Recommended Vent Length

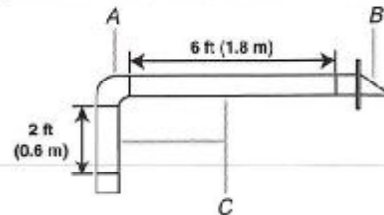
A 3/4" x 10" (8.3 x 25.4 cm) rectangular or 6" (15.2 cm) round vent should be used.

The total length of the vent system including straight vent, elbow(s), transitions and wall or roof caps must not exceed the equivalent of 140 ft (42.7 m) for either type of vent. See "Recommended Standard Fittings" section for equivalent lengths.

For best performance, use no more than three 90° elbows.

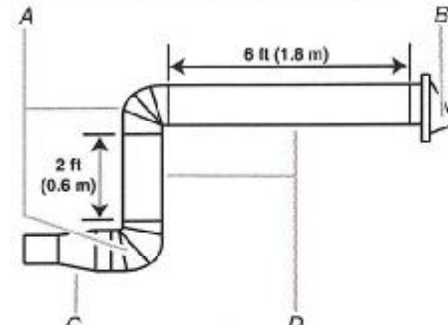
To calculate the length of the system you need, add the equivalent lengths of each vent piece used in the system. See the following examples:

3/4" x 10" (8.3 x 25.4 cm) vent system = 73 ft (22.2 m) total



- A. One 3/4" x 10" (8.3 x 25.4 cm) 90° elbow = 25 ft (7.6 m)
- B. 1 wall cap = 40 ft (12.2 m)
- C. 2 ft (0.6 m) + 6 ft (1.8 m) straight = 8 ft (2.4 m)

6" (15.2 cm) vent system = 73 ft (22.2 m) total



- A. Two 90° elbows = 20 ft (6.1 m)
- B. 1 wall cap = 40 ft (12.2 m)
- C. 1 rectangular to round transition piece = 5 ft (1.5 m)
- D. 2 ft (0.6 m) + 6 ft (1.8 m) straight = 8 ft (2.4 m)

If the existing vent is round, a rectangular to round transition piece must be used. In addition, a rectangular 3" (7.6 cm) extension vent between the damper assembly and rectangular to round transition piece must be installed to keep the damper from sticking.

LOCATION REQUIREMENTS

Special Requirements

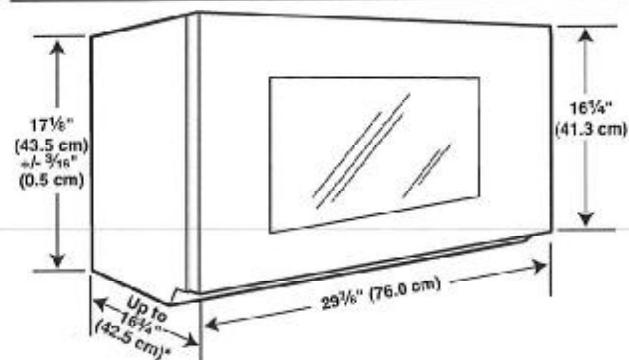
For Wall Venting Installation Only:

- Cutout must be free of any obstructions so that the vent fits properly, and the damper blade opens freely and fully.

For Roof Venting Installation Only:

- If you are using a rectangular to round transition piece, 3" (7.5 cm) clearance needs to exist above the microwave oven so that the damper blade can open freely and fully. See "Rectangular to Round Transition" illustration in "Venting Design Specifications" section.

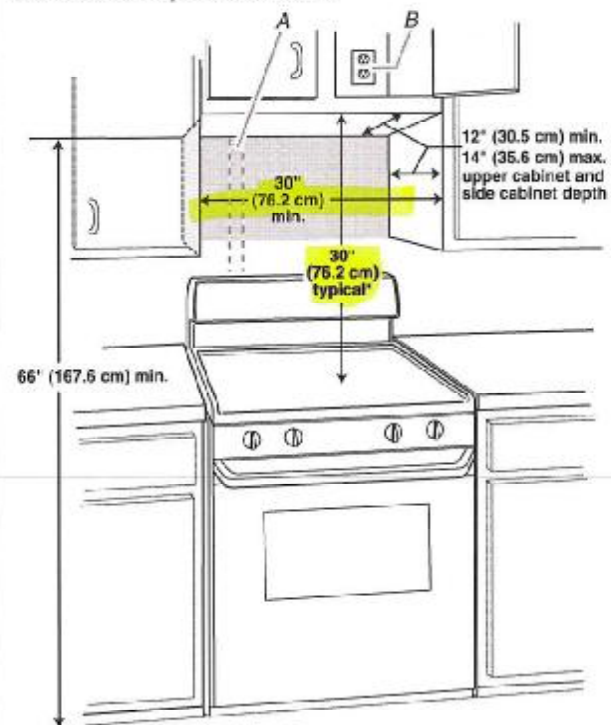
PRODUCT DIMENSIONS



* Overall depth of product will vary slightly depending on door design.

INSTALLATION DIMENSIONS

NOTE: The grounded 3 prong outlet must be inside the upper cabinet. See "Electrical Requirements" section.



*30" (76.2 cm) is typical for 66" (167.6 cm) installation height. Exact dimension may vary depending on type of range/cooktop below.

KitchenAid®

FOR THE WAY IT'S MADE.®

Undercounter Dishwasher

PRODUCT MODEL NUMBERS

KDFE204E, KDFE454C, KDTE104E, KDTE204E,
KDTE254E, KDTM354E, KDTM384E, KDTM404E,
KDTM504E, KDTM704E, KDTM804E

Electrical Requirements: 120-volt, 60 Hz, AC-only, 15- or 20-amp. fused electrical supply. Copper wire only. A time delay fuse or circuit breaker and separate circuit is recommended.

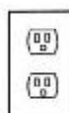
If direct wiring dishwasher: Use flexible, armored or nonmetallic, sheathed copper wire with grounding wire that meets the wiring requirements for your home and local codes and ordinances.

Use a UL Listed or CSA Approved conduit connector.

If connecting dishwasher with a power supply cord:

Use power supply cord kit (Part Number 4317824) marked for use with dishwashers. Follow the kit instructions for installing the power supply cord.

Power supply cord must plug into a grounded 3 prong outlet located in the cabinet next to the dishwasher opening. Outlet must meet all local codes and ordinances.



Water Supply Requirements: A hot water line with 20 to 120 psi (138 to 862 kPa) water pressure. Water temperature must be 120°F (49°C) water at dishwasher. Use 3/4" O.D. copper tubing with compression fitting or flexible braided water supply line.

Note: 1/2" minimum plastic tubing is not recommended.

Use a 90° elbow with 3/4" hose connection with rubber washer (Part Number W10273460). Do not solder within 6" (15.2 cm) from water inlet valve.

Drain Requirements: A new drain hose is supplied with your dishwasher. If this is not long enough, use a new drain hose with a maximum length of 12 (3.7 m) (Part Number 3385556) that meets all current AHAM/IAPMO test standards, is resistant to heat and detergent, and fits the 1" (2.5 cm) drain connector of the dishwasher.

Make sure to connect the drain hose to waste tee or disposer inlet above drain trap in house plumbing and 20" (50.8 cm) minimum above the floor. It is recommended

that the drain hose either be looped up and securely fastened to the underside of the counter or be connected to an air gap.

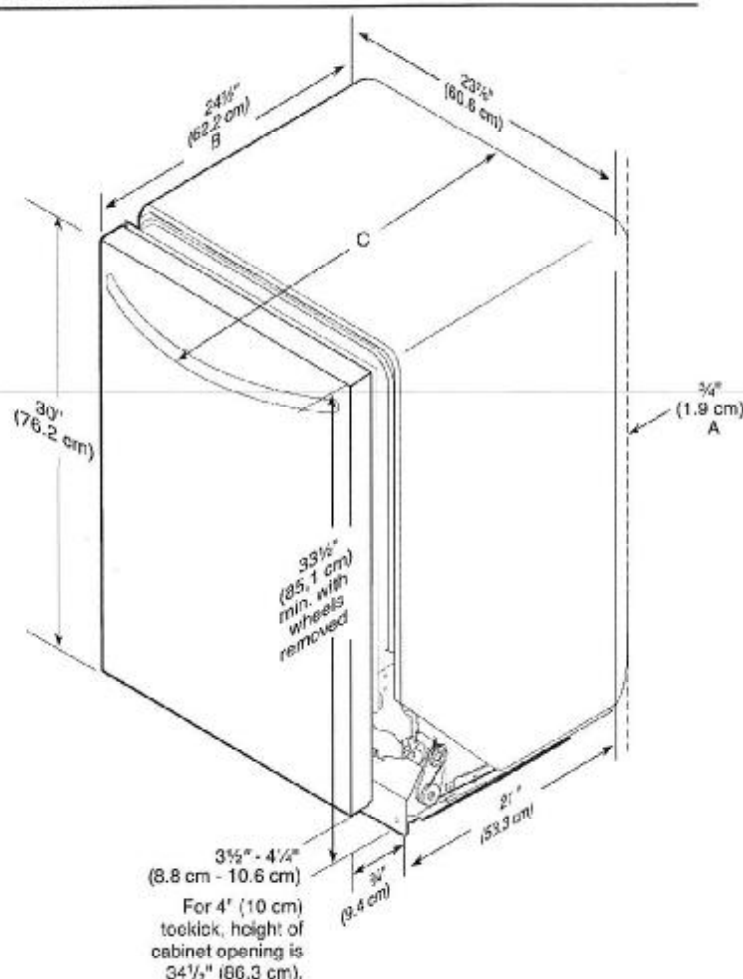
Make sure to use an air gap if the drain hose is connected to house plumbing lower than 20" (50.8 cm) above subfloor or floor.



Use 1/2" (1.3 cm) minimum I.D. drain line fittings.

If required, the air gap should be installed in accordance with the air gap installation instructions. When connecting the air gap, a rubber hose (not provided) will be needed to connect to the waste tee or disposer inlet.

PRODUCT DIMENSIONS



A. Insulation may be compressed (not used on all models).

B. For panel-ready models, dishwasher depth is 24" (60 cm) not including the 3/4" (1.9 cm) custom door panel.

C. Door handles may protrude forward of the face of the dishwasher; varies by model.

CABINET CUTOUT DIMENSIONS

NOTE: Shaded areas of cabinet walls show where utility connections may be installed.

* Measure from the lowest point on the underside of the countertop. May be reduced to 33½" (85.1 cm) by removing the rear leveling legs from dishwasher.

** Minimum, measured from narrowest point of opening.

