



CONSTRUCTION SUMMARY

84 - 2 - The Barossa 5 (38-5) Elev C

Extras at Time of Sale

OPTIONAL LOGGIA - AS PER PLAN
Worksheet Note:

CEILINGS

Inv.392	1 - 9 FOOT CEILINGS IN BASEMENT
Line6305	Note:
25Oct15 / 7Oct16	

Inv.392	1 - 10 FOOT CEILING ON MAIN FLOOR
Line6304	Note:
25Oct15 / 7Oct16	

CONSTRUCTION

Inv.392	1 - CREATE SIDE DOOR ENTRANCE- AS PER SKETCH
	WOULD INCLUDE CONCRETE SLAB STEPS , EXTERIOR DOOR
	PLEASE MAKE DOOR AS BIG AS POSSIBLE
Line5974	Note:
25Oct15 / 7Oct16	

Inv.392	1 - OPTIONAL LOGGIA IF GRADE PERMITS - AS PER SKETCH
	INCLUDED IN PURCHASE PRICE
Line6314	Note:
25Oct15 / 7Oct16	

MISCELLANEOUS

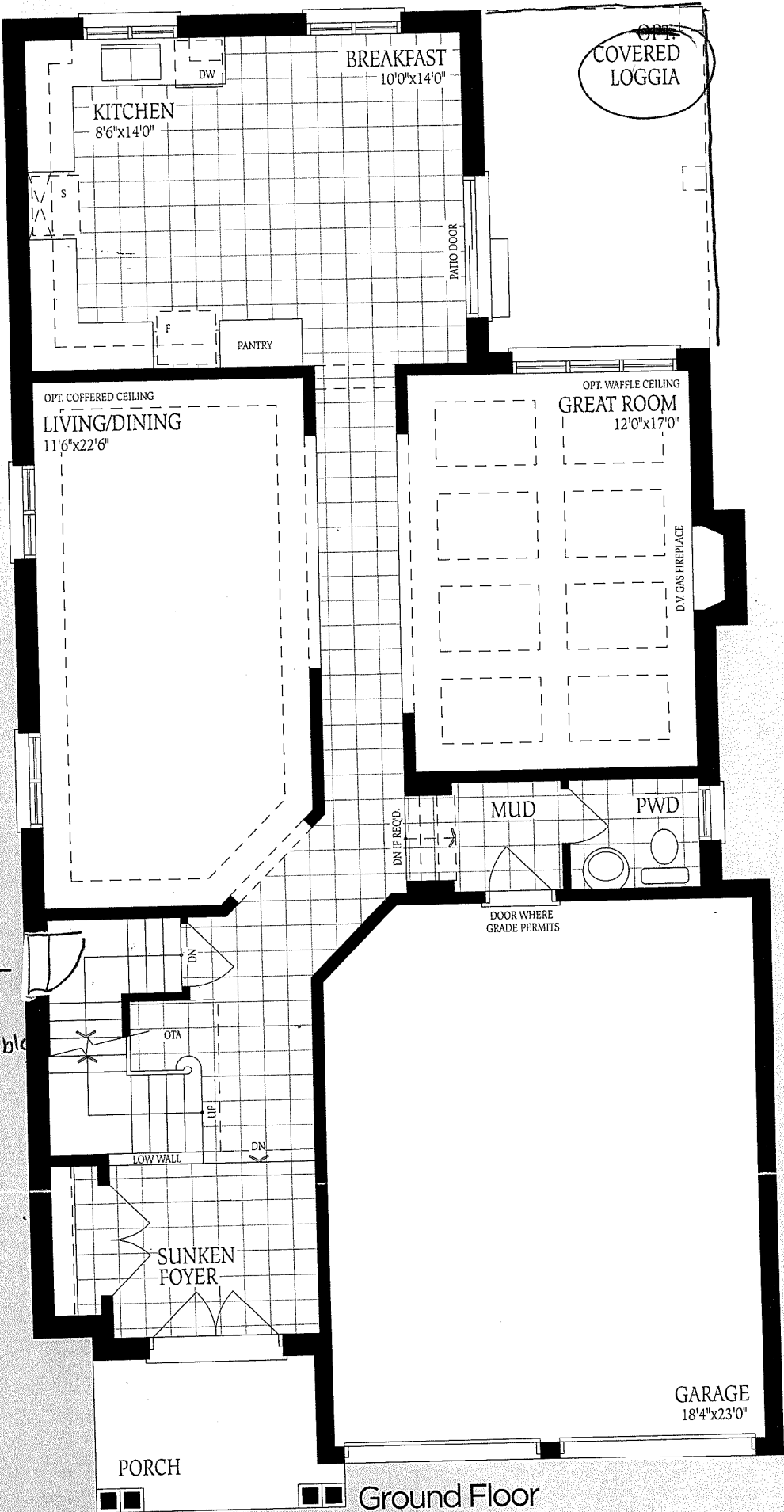
Inv.392	1 - CREDIT TO VENDOR FOR CHANGES MADE TO A LOCKED AND FINALIZED COLOUR CHART.
Line12012	Note:
25Oct15 / 7Oct16	

WINDOWS - BASEMENT

Inv.392	1 - BASEMENT WINDOW - 47 X 36 - EGRESS WINDOW- AS PER SKETCH
Line6313	Note:
25Oct15 / 7Oct16	

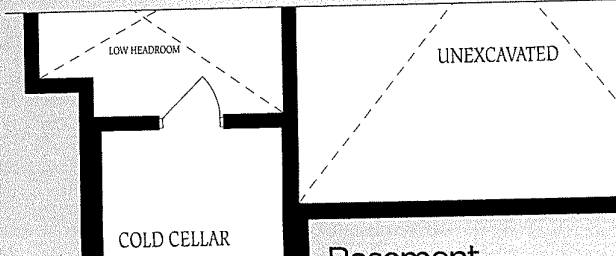
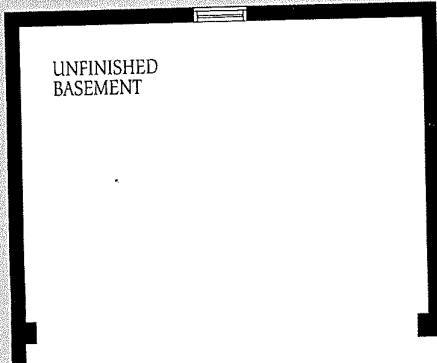
Inv.392	2 - BASEMENT WINDOW - 30 X 30- BOTH SIDE WINDOWS - AS PER SKETCH
Line5198	Note:
25Oct15 / 7Oct16	

Lot # 84

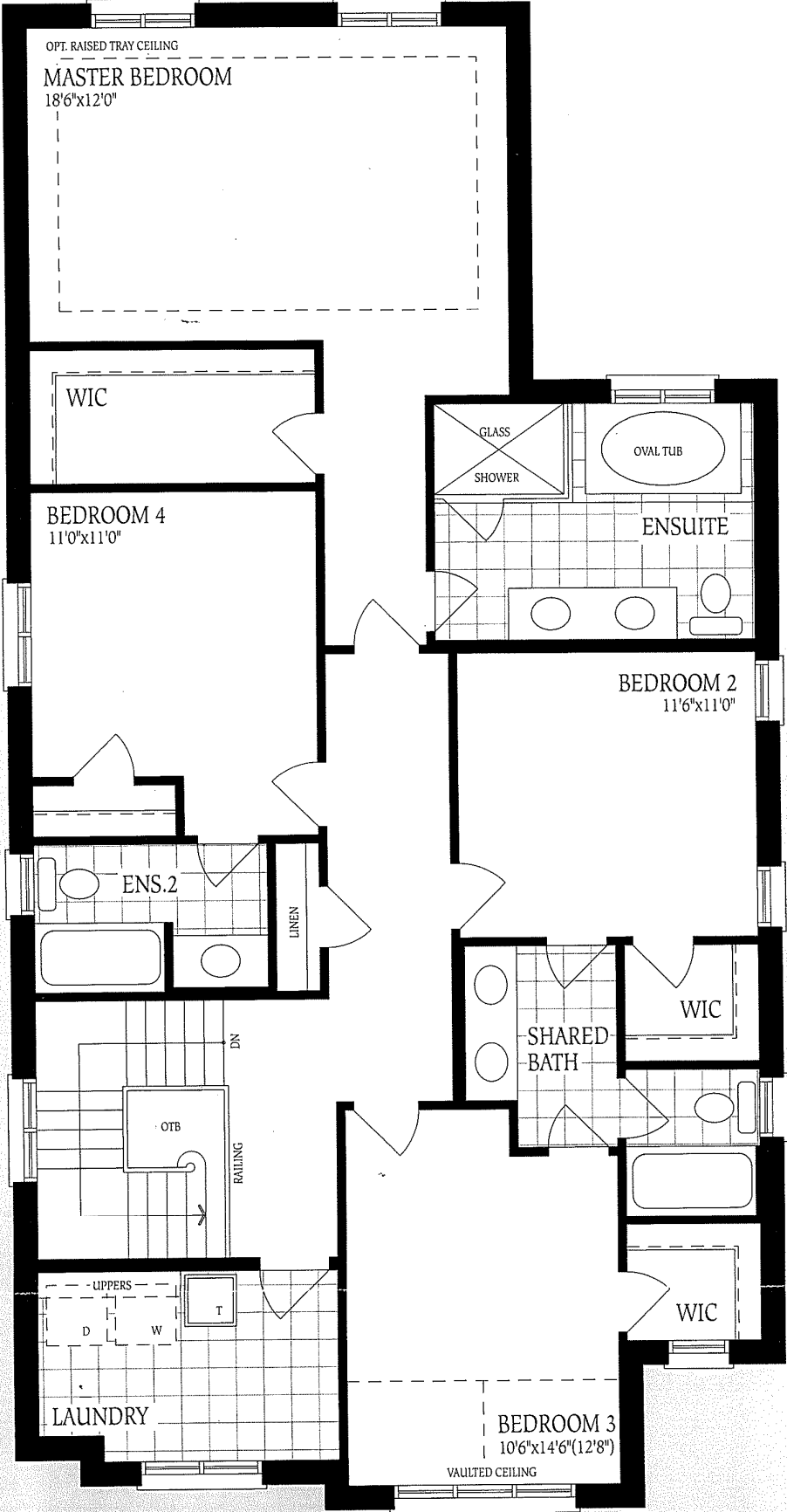


Create Side Door - Entrance as large as possible

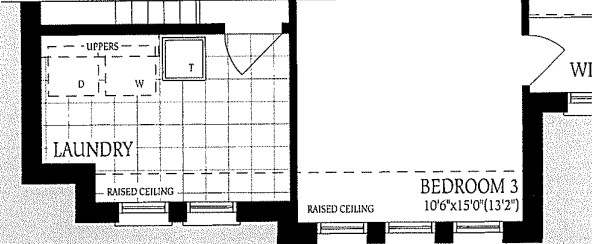
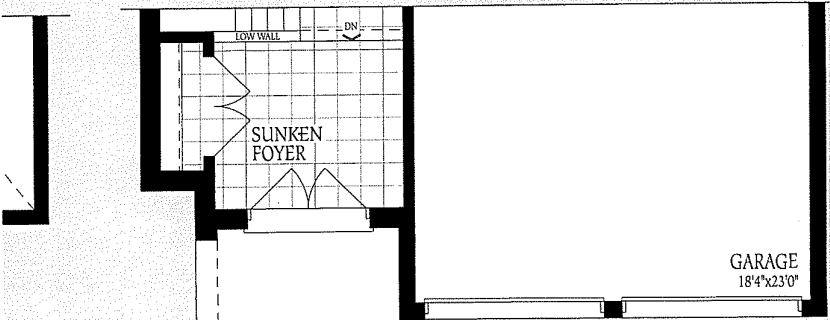
Ground Floor Elevation A



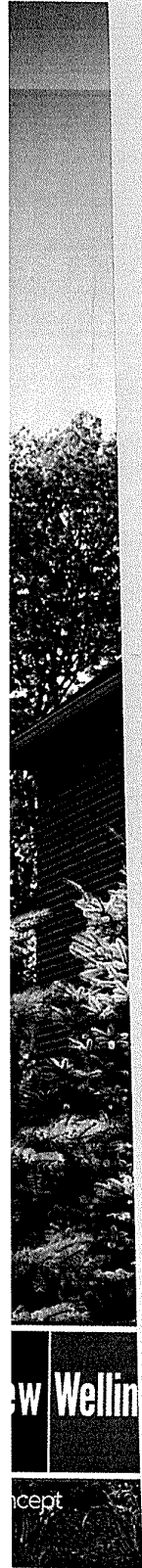
Lot #84



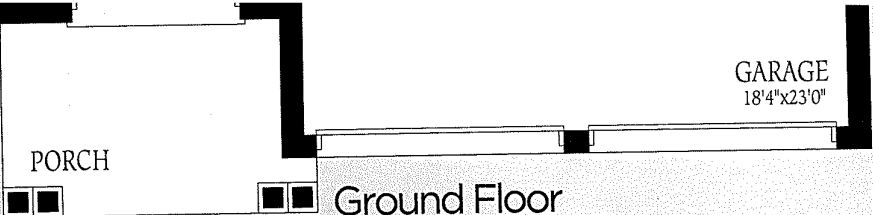
Second Floor
Elevation A



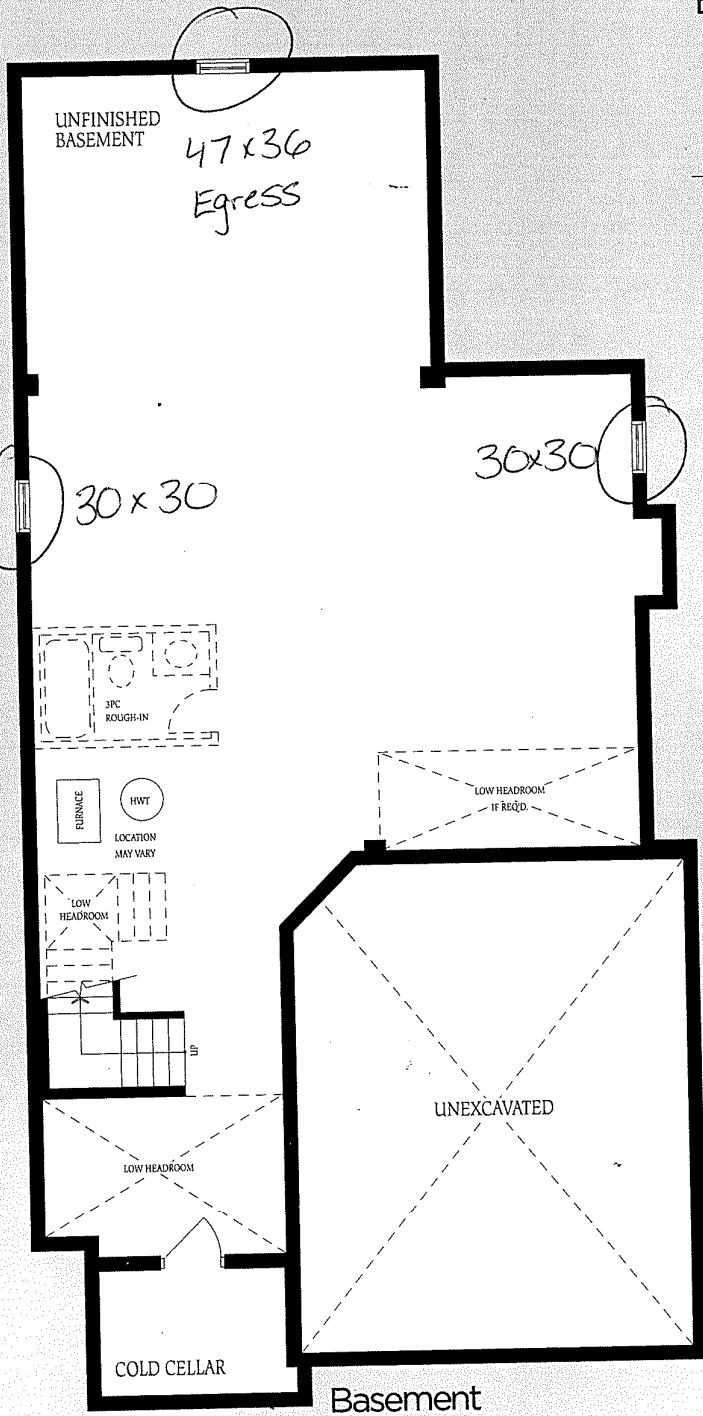
Second Floor
Elevation B



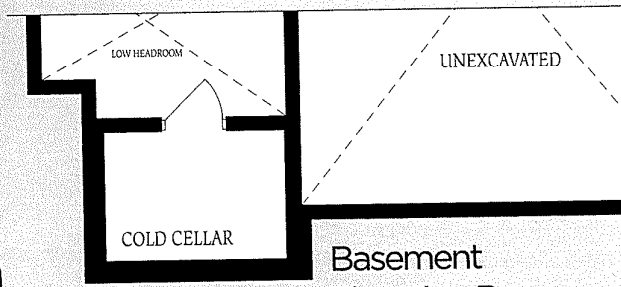
Lot #84



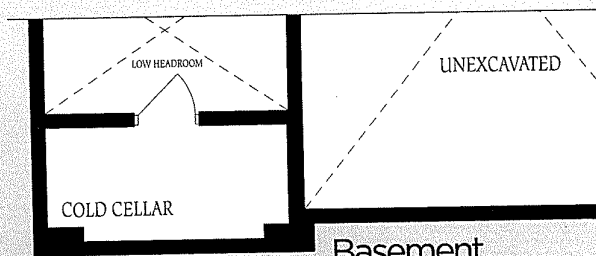
Ground Floor
Elevation A



Basement
Elevation A



Basement
Elevation B



Basement
Elevation C