



CONSTRUCTION SUMMARY

22 - 1 - PRESTON 13 (35-13) ELEV B

Extras at Time of Sale

Note:

CABINETRY

Inv:941	1 - KITCHEN: Supply & Install VK III Simcoe Ontario White kitchen cabinetry.
Line8843	Note:
4Jul16 / 8Aug16	

CABINETRY - ACCESSORIES

Inv:941	1 - KITCHEN: Supply & Install VK III - Manchester Maple - Shale Grey - Decor hood cabinet with 600 CFM fan for 36 inch cook top. See Sketch "C"
Line8836	Note:
4Jul16 / 8Aug16	
Inv:941	1 - KITCHEN: Supply and Install VK III - Manchester Maple - Shale Grey on island.
Line8845	Note:
4Jul16 / 8Aug16	
Inv:941	1 - KITCHEN: Supply & Install VK III Manchester Maple - Shale Grey -2 pots & pans drawers, And one cutlery drawer on island. See Sketch "D"
Line8848	Note:
4Jul16 / 8Aug16	
Inv:941	1 - KITCHEN: Supply & Install VK III Simcoe Ontario White crown moulding above kitcen cabinetry @ \$286.00/ 8 foot length - need two lengths.
Line9056	Note:
4Jul16 / 8Aug16	
Inv:941	1 - KITCHEN: Supply & Install 3 wine racks pigeon hole style in island. See Sketch "A"
Line10119	Note:
4Jul16 / 8Aug16	
Inv:941	1 - KITCHEN: Supply & Install VK III dummy drawer above base cabinets below the kitchen sink.. See Sketch "C"
Line9924	Note:
4Jul16 / 8Aug16	

CABINETRY - APPLIANCES

Inv:941	1 - KITCHEN: Supply & Install single appliance cabinet at end of kitchen counter - VK III Simcoe Ontario White with pots & pans drawers and an open shelf for the microwave (Purchaser does not want a trim kit). See Sketch "A"
Line9921	Note:
4Jul16 / 8Aug16	
Inv:941	1 - KITCHEN: Supply & Install single appliance cabinet at end of kitchen counter - VK III Simcoe Ontario White with extra drawer. See Sketch "A"
Line9922	Note:
4Jul16 / 8Aug16	
Inv:941	1 - KITCHEN: Supply & Install single appliance cabinet at end of kitchen counter - VK III Simcoe Ontario White - convert 59cm deep tall appliance cabinet to 66cm counter depth (J26). See Sketch "A"
Line9923	Note:
4Jul16 / 8Aug16	

CABINETRY - BASE CABINETS



CONSTRUCTION SUMMARY

22 - 1 - PRESTON 13 (35-13) ELEV B

Inv.941	1 - KITCHEN: Supply & Install VK III lower piano hinge cabinet with Lazy Susan. See Sketch "C"
Line8839	Note:
4Jul16 / 8Aug16	
Inv.941	1 - KITCHEN: Supply & Install VK III Simcoe Ontario White bank of drawers on right hand side of the stove (will be 4 drawers). See Sketch "C"
Line8849	Note:
4Jul16 / 8Aug16	
Inv.941	1 - KITCHEN: Supply & Install VK III Simcoe Ontario White single cabinet with single cutlery drawer at top on left hand side of stove. See Sketch "C"
Line8850	Note:
4Jul16 / 8Aug16	

CABINETRY - PANTRY CABINETS

Inv.941	1 - KITCHEN: Relocate fridge area aprox. one foot over towards outside wall to make room to supply & install a 30cm wide x 59cm deep pantry (VK III) between fridge and wall. See Sketch "A"
Line8832	Note:
4Jul16 / 8Aug16	

CABINETRY - UPPER CABINETS

Inv.941	1 - KITCHEN: Supply & Install VK III upper angle corner cabinet. See Sketch "C"
	NOTE: Purchaser does not mind if the number of doors between the angle cabinet and the hood fan are decreased.
Line8840	Note:
4Jul16 / 8Aug16	
Inv.941	1 - KITCHEN: Credit to delete cabinet above stove for hood fan. No Credit.
Line9098	Note:
4Jul16 / 8Aug16	

CABINETRY - VANITY CABINETS

Inv.941	1 - MAIN BATHROOM: Supply & Install VK II bank of drawers between the two sinks in the vanity. See Sketch "B"
Line10121	Note:
4Jul16 / 8Aug16	
Inv.941	1 - MASTER ENSUITE: Supply & Install VK II bank of drawers between the two sinks in the vanity. See Sketch "B"
Line10120	Note:
4Jul16 / 8Aug16	

CONSTRUCTION

Inv.941	1 - Purchaser requesting that bulk head be above kitchen cabinetry.
Line10181	Note:
4Jul16 / 8Aug16	

COUNTERTOP-LAMINATE

Inv.941	1 - KITCHEN: Supply & Install slide in stove prep and cut out for 36 inch wide stove for laminate countertop. See Sketch "C"
Line10123	Note:
4Jul16 / 8Aug16	

DOOR - EXTERIOR



CONSTRUCTION SUMMARY

22 - 1 - PRESTON 13 (35-13) ELEV B

Inv.883	1 - SUPPLY AND INSTALL A SECOND MAN DOOR FROM GARAGE TO OUTSIDE (SEE SKETCH)
Line8195	Note: THERE WILL BE ONE STEP UP TO THE DOOR. (PARKING SPACE MAY BE LOST)
16Jun16 / 22Jun16	

ELECTRICAL

Inv.941	1 - KITCHEN: Supply & Install rough ins for 2 (two) pendant lights over island. See Sketch "D"
Line8837	Note:
4Jul16 / 8Aug16	
Inv.941	1 - KITCHEN: Supply & Install 1pot light under cabinetry above kitchen sink. See Sketch "C"
Line10122	Note:
4Jul16 / 8Aug16	

HEATING AND AIR CONDITIONING

Inv.941	1 - KITCHEN: Supply & Install gas line in kitchen for future gas stove. See Sketch "A"
Line8851	Note:
4Jul16 / 8Aug16	

MISCELLANEOUS

Inv.941	1 - KITCHEN: Relocate kitchen sink and dishwasher space to the other side of the kitchen next to the stove area. See Sketch "A" (No Charge)
Line8831	Note:
4Jul16 / 8Aug16	
Inv.941	1 - UPPER HALL: Extend linen closet by an additional foot. See Sketch "B" (No Charge)
Line8833	Note:
4Jul16 / 8Aug16	
Inv.941	1 - BEDROOM 4 - reinforce overhead light fixture for future fan. See Sketch "B"
Line8834	Note:
4Jul16 / 8Aug16	

PAINT AND STAIN

Inv.941	1 - MAIN STAIRCASE: Supply & Install stain to railings and posts.
Line9930	Note:
4Jul16 / 8Aug16	

PLUMBING

Inv.941	1 - KITCHEN: Supply & Install water line for future ice maker fridge.
Line9929	Note:
4Jul16 / 8Aug16	

STAIRS AND RAILING

Inv.941	1 - Supply & Install iron pickets on staircase.
Line8842	Note:
4Jul16 / 8Aug16	

STAIRS AND RAILINGS / NOSINGS

Inv.883	1 - DELETE OAKS STAIRS (SEE E-SHEET 22-1)
Line8194	Note:
16Jun16 / 22Jun16	



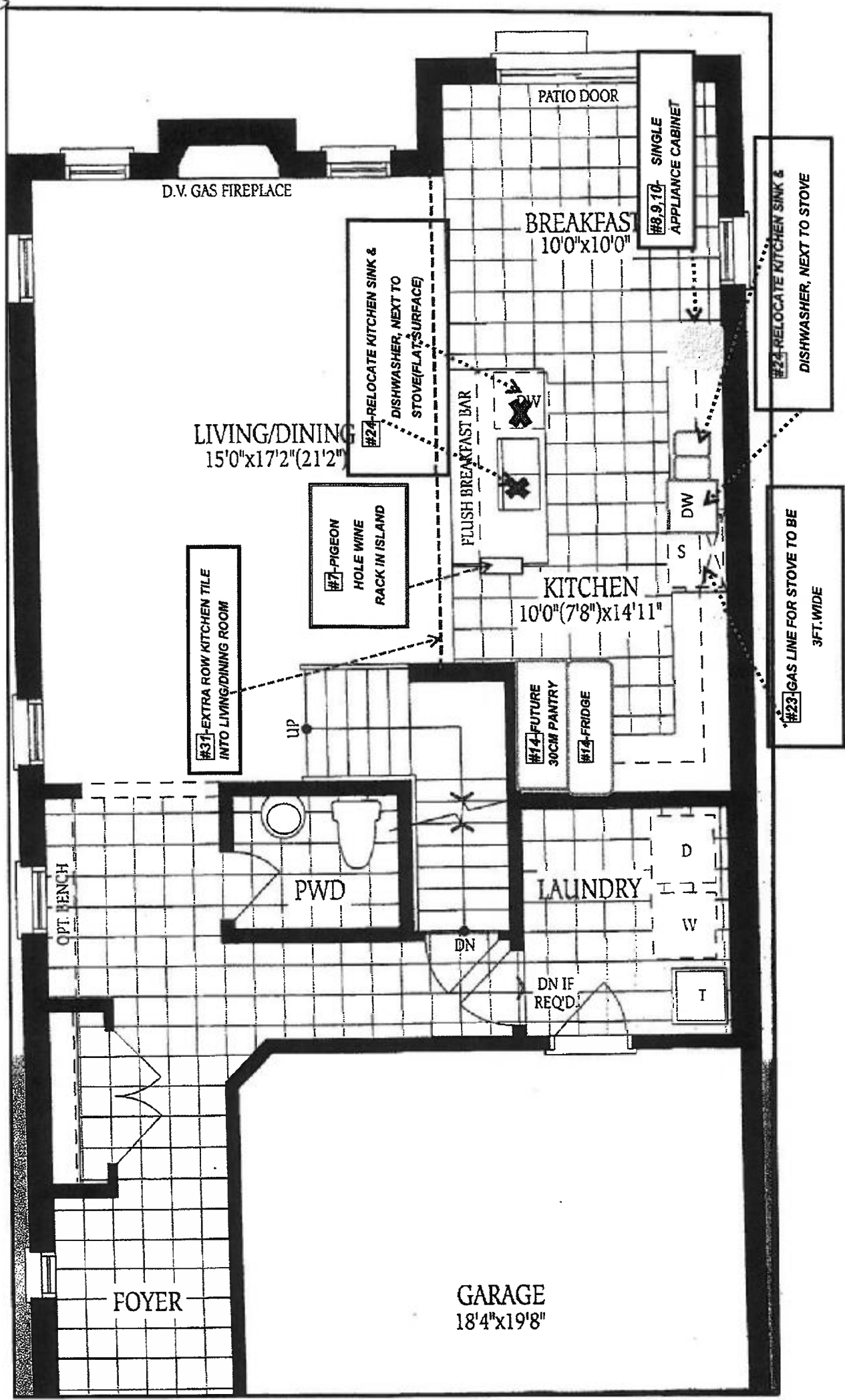
CONSTRUCTION SUMMARY

22 - 1 - PRESTON 13 (35-13) ELEV B

TILE

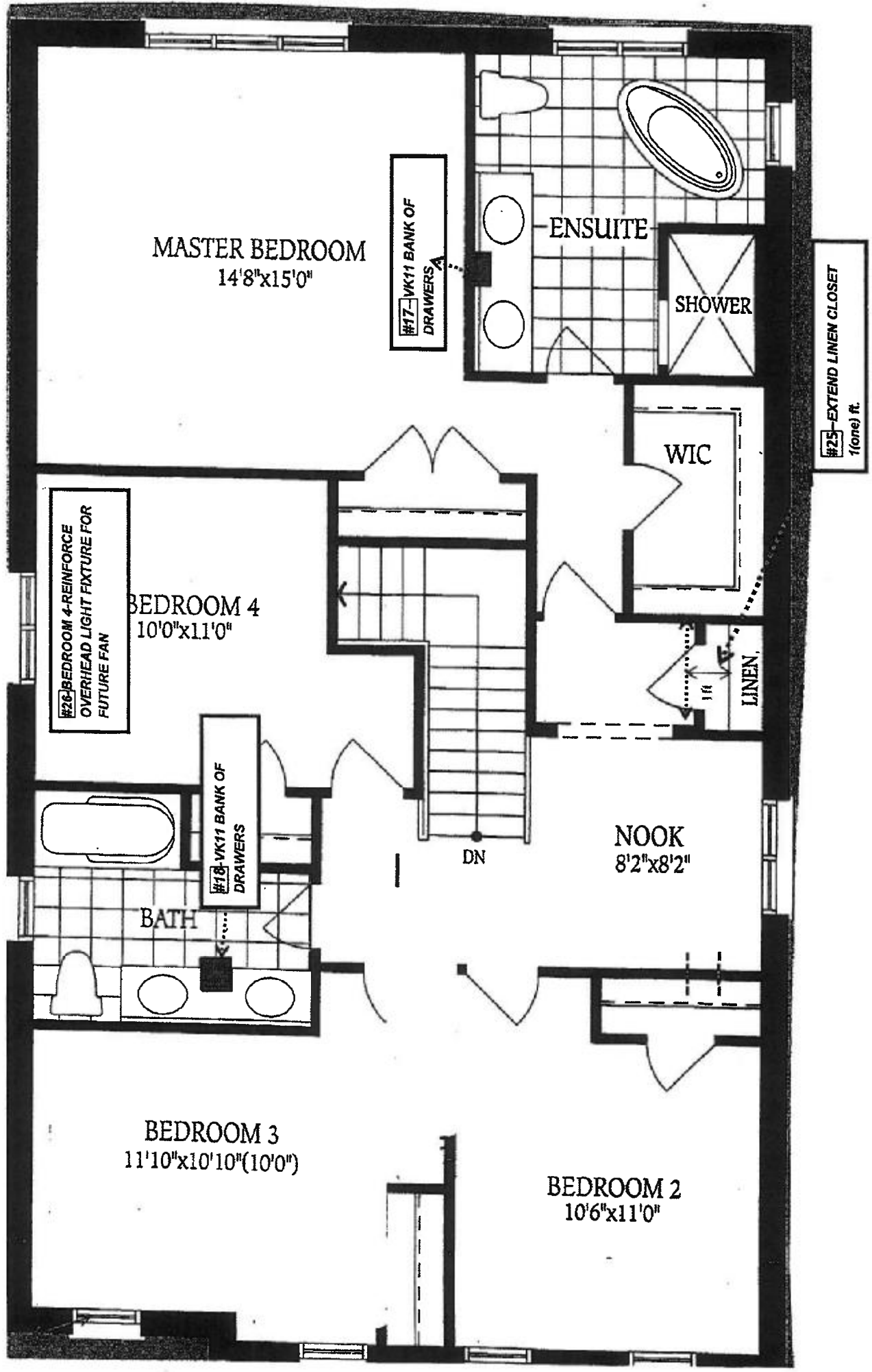
Inv.941	1 - MASTER ENSUITE: Supply & Install Max Kensington floor tile - 12 x 12 - ARZ3006 - Mid Grey.
Line9926	Note:
4Jul16 / 8Aug16	
Inv.941	1 - KITCHEN: Supply & Install Max Kensington - 12 x 12 - ARZ3006 - Mid Grey in kitchen/breakfast area and 1 extra row into the Living/Dining Room. See Sketch "A"
Line9927	Note:
4Jul16 / 8Aug16	

LOT 22-"SKETCH A" — MAIN FLOOR-PRESTON 13B

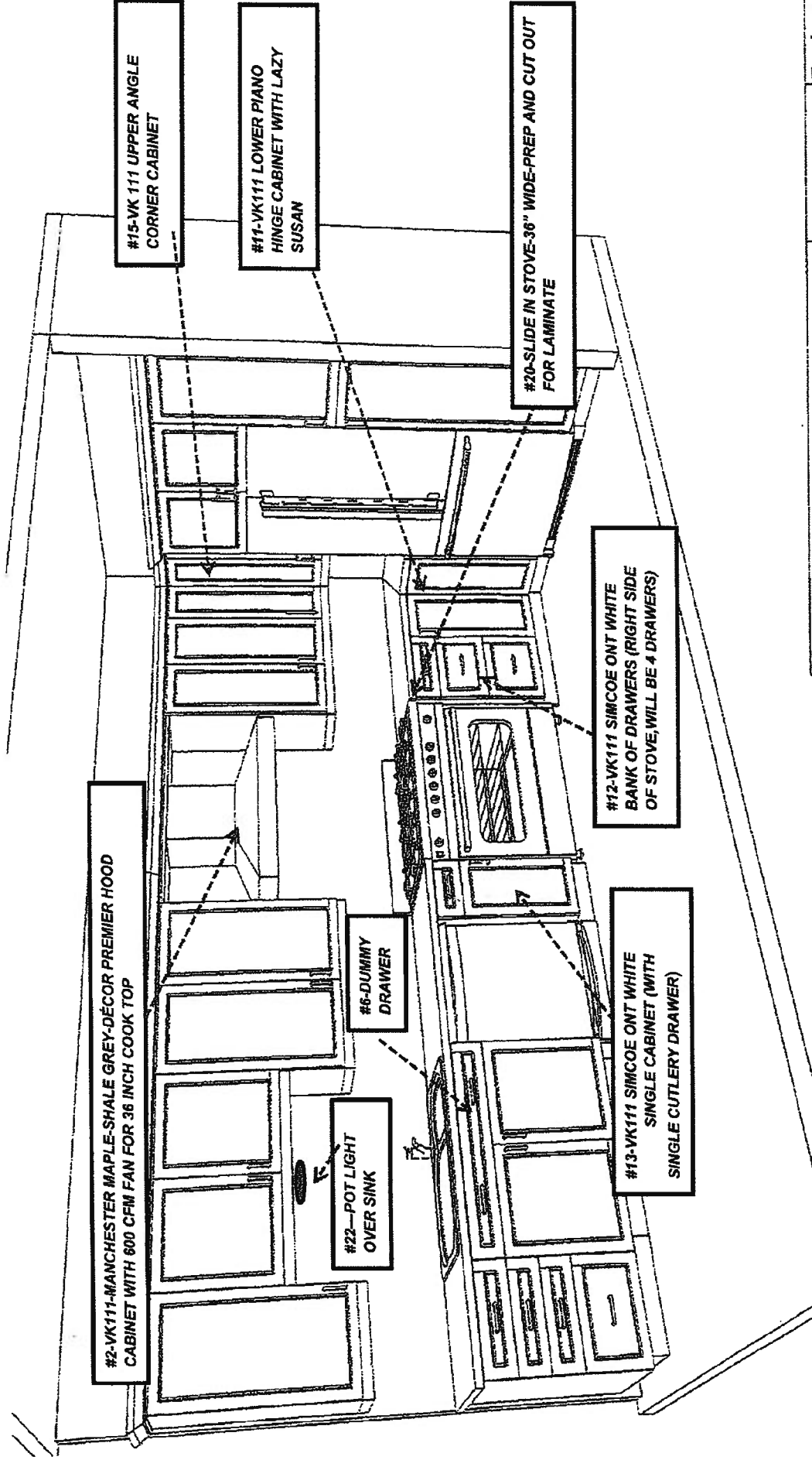


LOT 22-"SKETCH B" 2ND FLOOR-PRESTON 13B

dm



LOT 22-"SKETCH C"-KITCHEN PRESTON 13-B



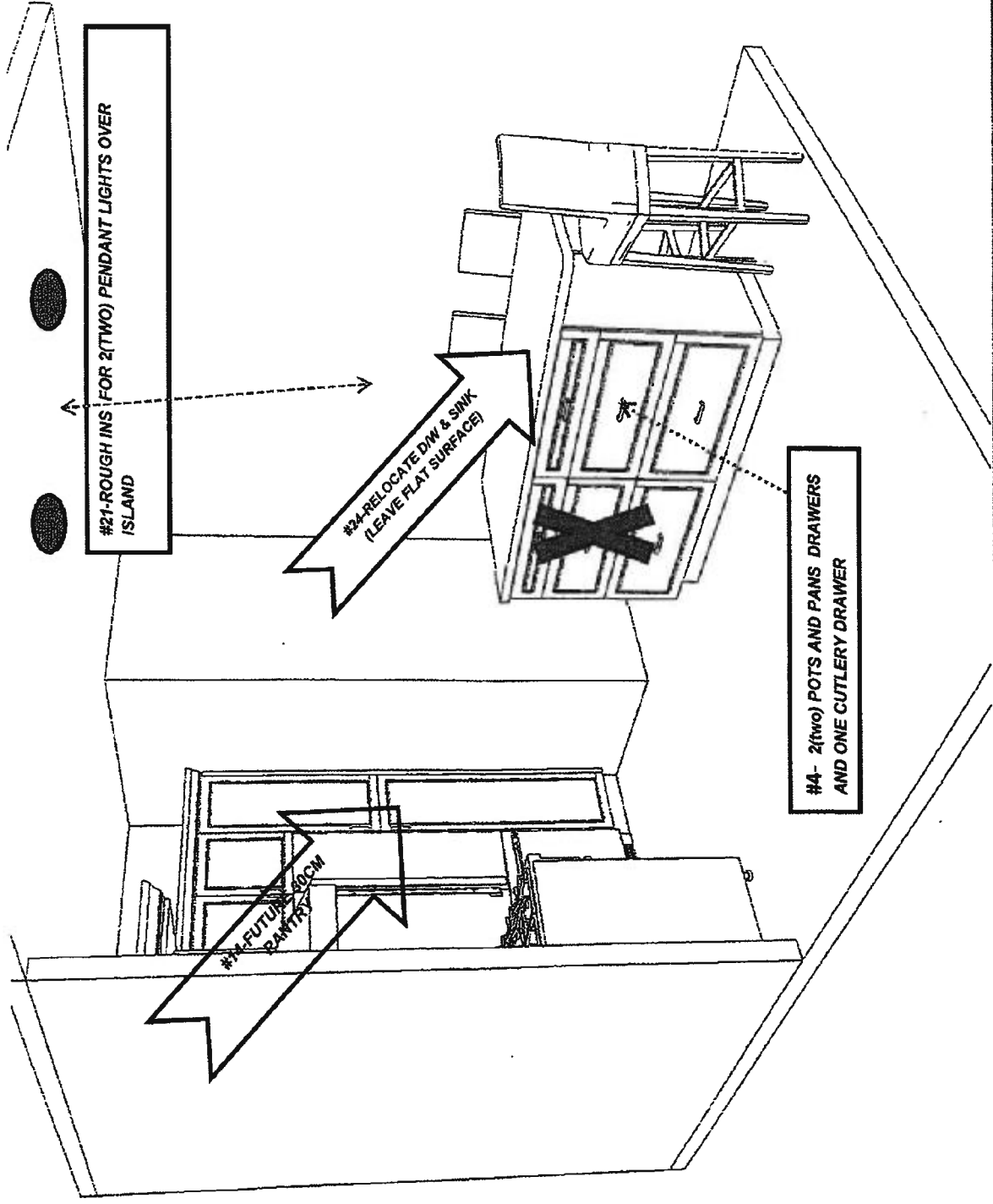
Note: This drawing is an artistic interpretation of the general appearance of the design. It is not meant to be an exact rendition.

Designed: 6/8/2016
Printed: 6/8/2016

2020

LOT 22-“SKETCH D” -KITCHEN-PRESTON 13B

Handwritten signature/initials.



Note: This drawing is an artistic interpretation of the general appearance of the design. It is not meant to be an exact condition

Designed: 6/8/2016
Printed: 6/8/2016