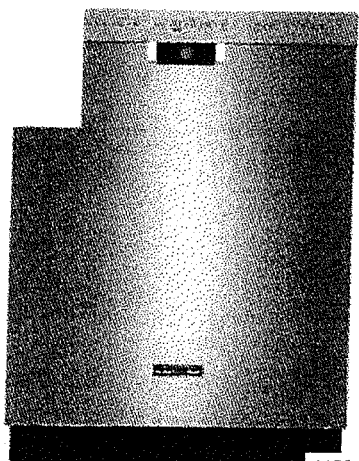


36" Cooktop no specs supplied  
yet. Purchaser will do his  
own electrical for this.

Lot 95.

Home > Appliances > Dishwashers > KitchenAid KDFE104DSS 24-in 46-Decibel



11505064S

## KitchenAid KDFE104DSS 24-in 46-Decibel Built-in Dishwasher ENERGY STAR

by KitchenAid

★★★★★

Write a review

Ask a question

Price **\$998.00**

You Save \$250.00 until Jul 12, 2016

Was **\$1,248.00**

Quantity

1

+

Add to Cart

Add to Compare

Add to Wish List

Get 49 AIR MILES® Reward Miles ?

Lowe's Item # Mr Part #

569064 KDFE104DSS

Check Store  
Availability

Free Store Pickup  
Lowe's Truck Delivery



View Large | Share your images

Description

Dimensions

Reviews

Questions

### Product Description

#### 24-in 46-Decibel Built-in Dishwasher ENERGY STAR

- 46 dBA means the sound level is comparable to rainfall, so it won't interrupt your kitchen conversations
- Adjustable SatinGlide® max upper rack and lower rack fold-down tines make it easy to fit large and odd-shaped items
- ENERGY STAR® qualified products help you save money on utility bills without sacrificing performance, style or comfort
- 6 wash cycles, including the ProWash™ cycle that delivers a customized clean and the express wash cycle for a faster clean
- Tall tub design fits 14 place settings, making it easy to fit extra-large and odd-shaped items on both racks
- Fully visible electronic control panel for easy cycle selection and control lock to discourage unwanted changes
- NSF® certified Sani Rinse® sanitization cycle delivers a high-temperature rinse to help fight bacteria
- Stainless steel tub is stylish and durable, so it stays looking great for the long-haul

#### Includes:

- Adjustable Upper Rack: Yes
- Air Dry: Yes
- Automatic Temperature Control: Yes
- Bottle Wash Feature: No
- Control Lock/Child Lock: Yes
- Cycle Status Lights: Yes
- Heated/Hi-Temp Dry: Yes
- Hi-Temp Wash Option: Yes
- Direct Feed: Yes
- Delay Wash: Yes
- Normal Cycle: Yes
- NSF Certified Sanitization Option: Yes

- Sensor Wash Cycle: Yes
- Silverware Basket Covers: Yes
- Water Filtration: Yes
- Lowe's Exclusive: No
- Pre-Soak Cycle: No
- Rinse and Hold Cycle: No
- Self-Cleaning Filter: No
- Heavy/Pots and Pans Cycle: No
- 1/2-Rack Wash Option: No
- Custom Door Panels: No
- Advanced Sensor Wash Cycle: No
- Bottle Wash Feature: No
- Gentle Wash Cycle: No
- Steam Option: No
- Targeted Scouring Module: No
- Targeted Silverware Wash Module: No
- Power Cord Included: No

## Specs:

- CEE Tier Qualified: CEE Tier I
- Control Panel Style: Fully visible
- Control Type: Electronic
- Defining Attributes: KDFE104DWH, KDFE104DSS
- Delay Wash Time (Hours): 4
- ENERGY STAR Band: Energy Star
- Fill and Drain Hose Included: Drain hose included; fill hose sold separately
- Fold-Down Tines: Lower rack only
- Hard Food Disposer or Filtration: Filtration
- Number of AHAM Place Settings: 14
- Number of Cycles: 6
- Number of Wash Levels: 5
- Rack Material: Nylon
- Rack Options: None
- Sound Rating (Decibels): 46
- Sound Rating Range: 54 DBA - 45 DBA
- Tub Height: Tall
- Tub Material: Stainless steel
- Unique/Exclusive Cycle: ProWash
- Wash System: Global wash filter
- Wash System Type: Direct feed

## Warranty:

- Racks Warranty Labor (Months): 12
- Racks Warranty Parts (Months): 60
- Motor Warranty Labor (Months): 12
- Motor Warranty Parts (Months): 12
- Manufacturer's Warranty (Labor): 1-year limited
- Manufacturer's Warranty (Parts): 1-year limited
- Elec Ctrl Module Warranty Labor (Months): 12
- Elec Ctrl Module Warranty Parts (Months): 60
- Base Warranty Labor (Months): 12
- Base Warranty Parts (Months): 12


Color / Finish: Stainless Steel

Listing:



## Dimensions &amp; Weights

Depth (Excluding Handles):	24¾ inches
Depth (Including Handles):	24¾ inches
Depth with Door Open:	4 feet 1½ inches
Height:	34½ inches
Width:	23.88 inches

 USA Listed

### Dimensions & Weights

Depth:	19¾ inches
Height:	22 inches
Width:	29½ inches
Box Dimensions:	3 feet 1 inch x 1 foot 5¼ inches x 1 foot 10 inches
Ship Weight:	47½ lbs

## Questions

Be the first to ask a question

## Reviews

★★★★★

Be the first to write a review

### Tag This Product

A tag is a keyword assigned to a product which helps describe the item and allows it to be found by other customers

Add a new tag

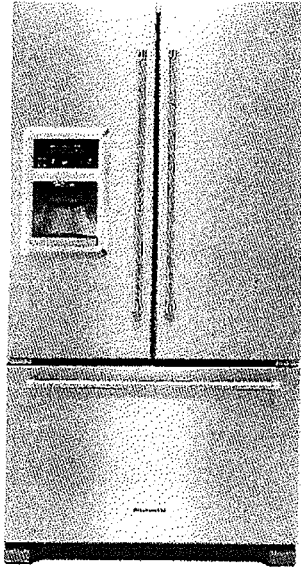
Add Tag

Separate multiple tags with commas

Don't add spaces

### Additional Details

Mfr Part #:	VJ603302SS
Sku:	10986440S
UPC #:	772371107816
Group #:	1600695
Category:	Wall Mount Range Hoods - 1684
Style:	- 0
Sales Rank:	5



NEW

**KitchenAid® 20 cu. Ft. 36-Inch Width  
Counter Depth French Door  
Refrigerator with Exterior Ice and Water**

3.3

104 Reviews [Write a Review](#)

This counter-depth refrigerator is accented by a through-the-door ice-and-water dispenser featuring an LCD display. The appealing design is enhanced by the ExtendFresh™ Temperature Management System that helps the refrigerator and freezer reach and maintain optimum temperatures.

**AVAILABLE COLOR OPTIONS**☐ Stainless Steel - KRFC400ESS

# 3498

**SPECIFICATIONS****Performance**

Refrigerator Type	French Door
Freezer Capacity	5.04
Refrigerator Capacity	14.68
Energy Star® Qualified	No
CEE Tier	Not Rated
Star K Compliant	Sabbath Mode

**Dimensions**

See Dimension Guide for Metric Measurements

Height	70 1/8
Depth	29 1/8
Width	35 5/8
Height To Top Of Cabinet	68 5/8
Depth With Door Open 90 Degree	43
Depth Excluding Doors	24
Depth Closed Excluding Handles	26 3/4
Width with Doors Closed	35 5/8

**Capacity**

Freezer Capacity	5.04
Refrigerator Capacity	14.68

**Refrigerator Features****Product Dimensions**

Dimensions are for planning purposes only.  
For complete information, visit owner center.

Spill-Proof Glass Shelves	4 Adjustable Full-Width
Temperature-Controlled Drawers	1 Full-Width
Number of Interior Shelves	5
Humidity-Controlled Drawers	2 Split-Width
Door Bins	1 Dairy, 2 Adjustable Full-Width, 2 Adjustable Gallon, 2 Adjustable Partial-Width
Upper Freezer Drawer	Half-Width
Light	LED
Slide-Out Freezer Basket	Plastic
Lower Freezer Drawer	Full-Width

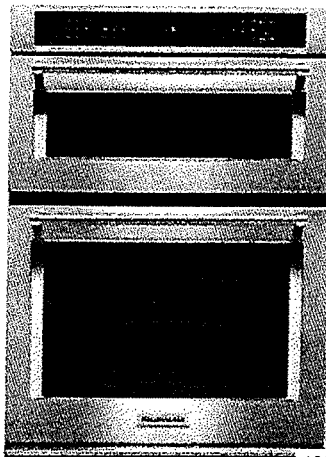
### Freezer Features

Filtered Water	Yes
Ice Maker	Factory Installed
Dispenser Type	Exterior Ice and Water
Measured Fill	No

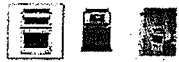
### Filtration and Dispensing

LCD Touch Screen	Yes
Door Style	Flat

### Controls

[Home](#) > [Appliances](#) > [Wall Ovens](#) > [KitchenAid KOCE500ESS 30-in Self-Clea...](#)

12648208S

[View larger](#) | [Download Images](#)

## KitchenAid KOCE500ESS 30-in Self-Cleaning Microwave Convection Microwave Wall Oven Combo

by KitchenAid

★★★★★

[Write a review](#) | [Ask a question](#)Price **\$6,098.00**

Get 304 APX WALLS™ Referred Users ?

Lowe's Item Mfr Part #  
668304 KOCE500ESS[Check Store Availability](#)

Estimated Price with delivery and tax

Parcel Shipping  
Free Store Pickup  
Lowe's Truck Delivery

Quantity

1

+

[Add to Cart](#)[Add to Compare](#)[Add to Wish List](#)[Shipping & Pickup Policy](#) | [Return Policy](#)[Description](#)[Dimensions](#)[Reviews](#)[Questions](#)

### Product Description

#### 30-In Self-Cleaning Microwave Convection Microwave Wall Oven Combo

- Even-Heat™ True Convection Oven (lower oven) - provides consistent heating and even cooking on all racks with a unique bow-tie shaped design and convection fan that helps ensure the most even baking
- Microwave Convection cooking (upper oven) - increases the speed of cooking and provides a secondary convection cooking option
- Professionally - inspired design - features satin textured handles and the KitchenAid® badge and brand medallion, a symbol of uncompromised quality
- Temperature probe (lower oven) - allows accurate measurement of internal temperature of meats, poultry, and casseroles without having to open the oven door
- FIT system guarantee - allows for customization of wall oven installation to match the height of existing cabinets through flexible design elements
- EasyConvect™ Conversion System - takes guesswork out of convection cooking by ensuring you can get exceptional results when experimenting with new or familiar recipes
- Crispwave™ Microwave Technology and crisper pan (upper oven) - allows the microwave oven to be used for grilling, frying, and convection cooking, the specially designed crisper pan can be used to brown, crisp, and pan-fry foods
- SatinGlide™ roll-out extension rack (lower oven) - allows easy loading and features an easy-grip handle, giving you the confidence when cooking with large or heavy dishes.

#### Includes:

- Adjustable Cleaning Levels: Yes
- Automatic Convection Conversion: Yes
- Automatic Shut-Off: Yes
- Delay Bake: Yes
- Glide/Rollout Racks: Yes
- Hidden Bake Element: Yes

- Proofing: Yes
- Sabbath Mode: Yes
- Time Bake: Yes
- Dehydration: No
- Delay Clean: No
- Favorite Setting: No
- Half/Split Rack: No
- Keep Warm Setting: No
- Heavy-Duty Self-Clean Option: No
- Light Self-Clean Option: No
- Microwave Child Safety Locks: No
- Microwave Oven Rack: No
- Self-Cleaning Oven Racks: No
- Temperature-Sensor Baking: No

**Specs:**

- Color/Finish Family: Stainless steel
- Handle Color: Stainless steel
- Microwave Interior Color: Gray
- Oven Interior Color: Black
- Actual Depth with Door Open (Centimeters): 118.745
- Actual Depth with Door Open (Inches): 46.75
- Actual Depth with Door Open (Millimeters): 1187.45
- Cutout Depth (Inches): 24
- Cutout Height (Inches): 41.375
- Cutout Width (Inches): 28.5
- Microwave Capacity (Cu. Feet): 1.4
- Microwave Cooking Power (Watts): 900
- Number of Bake Elements: 1
- Number of Broiler Elements: 1
- Number of Oven Rack Positions: 6
- Oven Capacity (Cu. Feet): 5
- Bake Element Location: Bottom
- Cleaning Method: Self-cleaning
- Control Type: Glass touch digital display
- Convection Element Type: Single-fan
- Defining Attributes: KOCE500EBL,KOCE500EWH
- Interior Light(s) Type: Halogen
- Light(s) Control: Oven light touch pad
- Lowe's Exclusive: No

**Warranty:**

- Base Warranty Labor/Parts (Months): 12
- Elec Ctrl Module Warranty Labor/Parts (Months): 12
- Magnetron Tube Warranty Labor/Parts (Months): 12
- Manufacturer's Warranty (Labor/Parts): 1-year limited

**Color / Finish:** Stainless Steel

**Listing:** 

**Dimensions & Weights**

<b>Depth:</b>	26.875 inches
<b>Height:</b>	3 feet 6½ inches
<b>Width:</b>	30 inches
<b>Box Dimensions:</b>	30.81 inches x 34.81 inches x 45 inches
<b>Ship Weight:</b>	220lbs

**Related Items**

KOCE500ESS 30-in... \$3,398.00	KOCE500ESS Arch... \$1,380.00
--------------------------------------	-------------------------------------

#### Similar Looking Items

		
Frigidaire FPET3077RF 30-in... \$2,898.00	KitchenAid KOCE500ESS 30-in... \$3,398.00	GE JOT5000SFSS 30-in Electr... \$1,998.00

## Questions

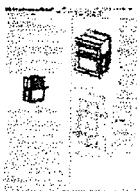
Be the first to ask a question

## Reviews

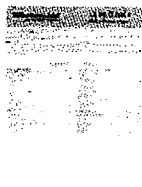
★★★★★

Be the first to write a review

#### Manuals & Downloads



883049327389\_ca\_meas.pdf



883049327389\_ca\_use.pdf



Warranty

#### Tag This Product

A tag is a keyword assigned to a product which helps describe the item and allows it to be found by other customers

Add a new tag

Add Tag

Separate multiple tags with commas

What's new?

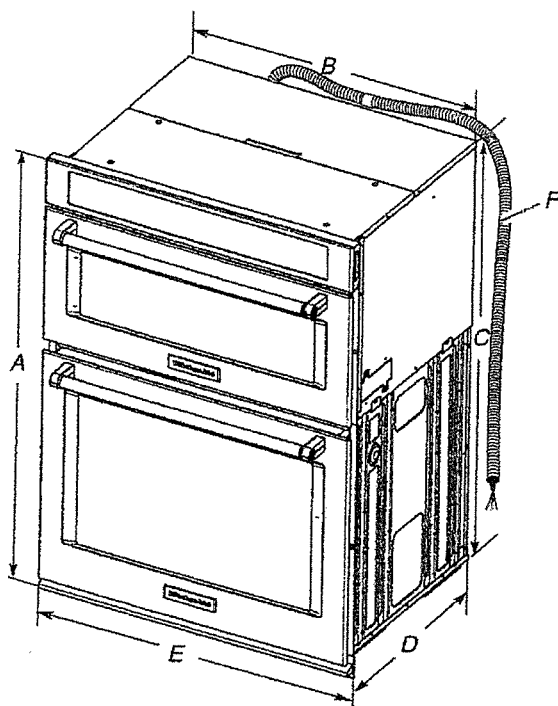
#### Additional Details

Mfr Part #:	KOCE500ESS
Sku:	12648208S
UPC #:	883049327389



## Product Dimensions

### 27" (68.6 cm) and 30" (76.2 cm) Ovens



#### 27" (68.6 cm) models

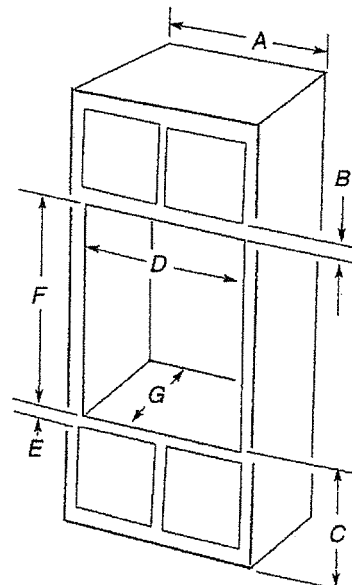
- A. 42 $\frac{1}{8}$ " (108.0 cm) overall height
- B. 25 $\frac{1}{8}$ " (64.6 cm) recessed width
- C. 41" (104.1 cm) recessed height
- D. 23 $\frac{3}{4}$ " (59.1 cm) max. recessed depth
- E. 27" (68.6 cm) overall width
- F. 48" (121.9 cm) flexible conduit length measured from the conduit clamp located at the rear of the oven. Do not remove the conduit clamp.

#### 30" (76.2 cm) models

- A. 42 $\frac{1}{8}$ " (108.0 cm) overall height
- B. 28 $\frac{1}{2}$ " (72.3 cm) recessed width
- C. 41" (104.1 cm) recessed height
- D. 23 $\frac{3}{4}$ " (59.1 cm) max. recessed depth
- E. 30" (76.2 cm) overall width
- F. 48" (121.9 cm) flexible conduit length measured from the conduit clamp located at the rear of the oven. Do not remove the conduit clamp.

## Cabinet Dimensions

### 27" (68.6 cm) and 30" (76.2 cm) Ovens



#### 27" (68.6 cm) models

- A. 27" (68.6 cm) min. cabinet width
- B. 1" (2.5 cm) top of cutout to bottom of upper cabinet door
- C. 19 $\frac{1}{4}$ " (48.9 cm) bottom of cutout to floor is recommended. 4"-19 $\frac{1}{4}$ " (10.2-48.9 cm) bottom of cutout to floor is acceptable.
- D. 25 $\frac{1}{8}$ " (64.8 cm) cutout width
- E. 1 $\frac{1}{2}$ " (3.8 cm) min. bottom of cutout to top of cabinet door
- F. 41 $\frac{3}{8}$ " (105 cm)\* recommended cutout height
- G. 24" (60.7 cm) cutout depth

#### 30" (76.2 cm) models

- A. 30" (76.2 cm) min. cabinet width
- B. 1" (2.5 cm) top of cutout to bottom of upper cabinet door
- C. 19 $\frac{1}{4}$ " (48.9 cm) bottom of cutout to floor is recommended. 4"-19 $\frac{1}{4}$ " (10.2-48.9 cm) bottom of cutout to floor is acceptable.
- D. 28 $\frac{1}{2}$ " (72.4 cm) cutout width
- E. 1 $\frac{1}{2}$ " (3.8 cm) min. bottom of cutout to top of cabinet door
- F. 41 $\frac{3}{8}$ " (105 cm)\* recommended cutout height
- G. 24" (60.7 cm) cutout depth

**\*NOTE:** The cutout height can be between 41" (104.1 cm) and 41 $\frac{1}{2}$ " (105.6 cm) for microwave/oven combination.

## Electrical Requirements

If codes permit and a separate ground wire is used, it is recommended that a qualified electrical installer determine that the ground path and wire gauge are in accordance with local codes.

Check with a qualified electrical installer if you are not sure the oven is properly grounded.

This oven must be connected to a grounded metal, permanent wiring system.

Be sure that the electrical connection and wire size are adequate and in conformance with the National Electrical Code, ANSI/NFPA 70-latest edition or CSA Standards C22.1-94, Canadian Electrical Code, Part 1 and C22.2 No. O-M91-latest edition, and all local codes and ordinances.

A copy of the above code standards can be obtained from:

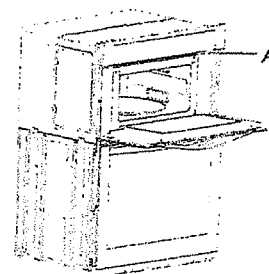
National Fire Protection Association  
1 Batterymarch Park  
Quincy, MA 02169-7471

CSA International  
8501 East Pleasant Valley Road  
Cleveland, OH 44131-5575

### Electrical Connection

To properly install your oven, you must determine the type of electrical connection you will be using and follow the instructions provided for it here.

- Oven must be connected to the proper electrical voltage, amperage, and frequency as specified on the model/serial number rating plate. See the following illustration.



A. Model/serial number plate