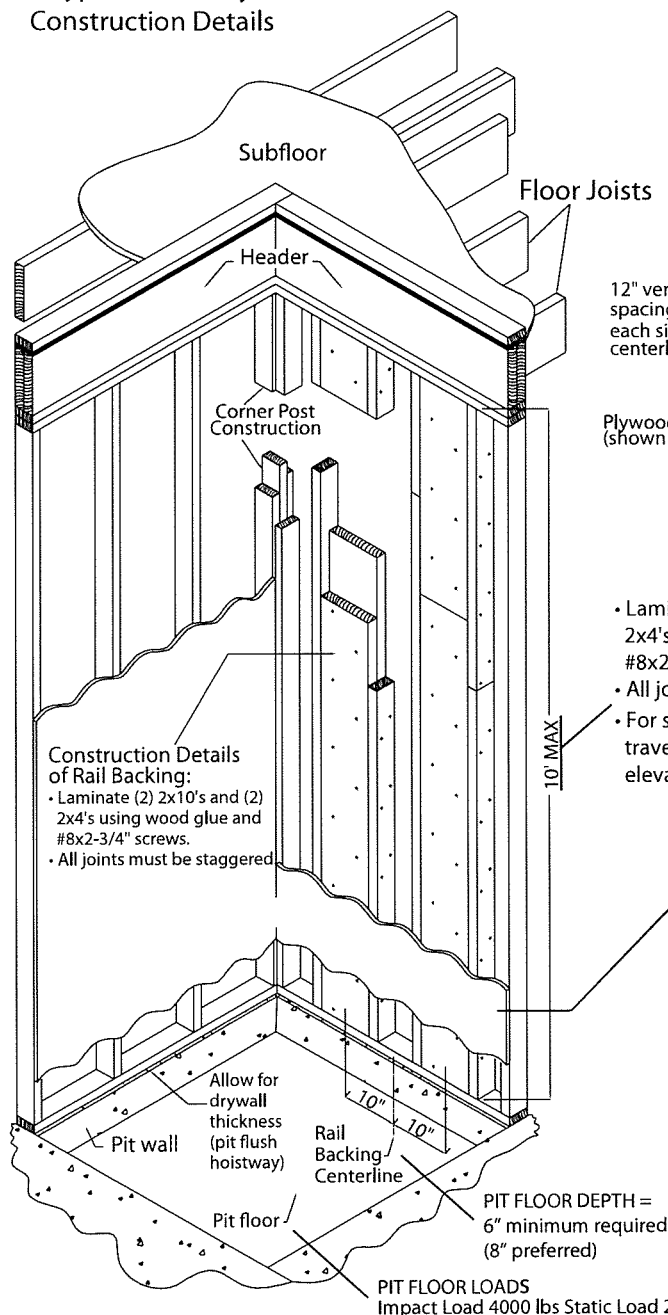


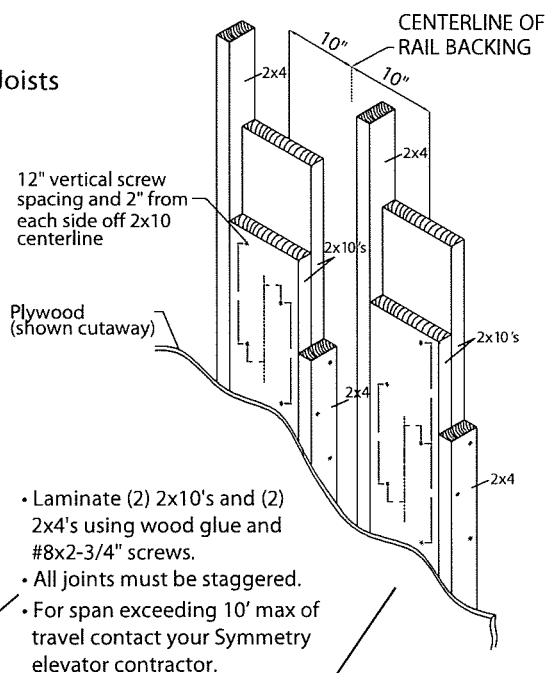
Typical Hoistway Construction

Construction & Rail Backing Details

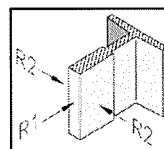
Typical Hoistway
Construction Details



Typical Rail Backing
Construction

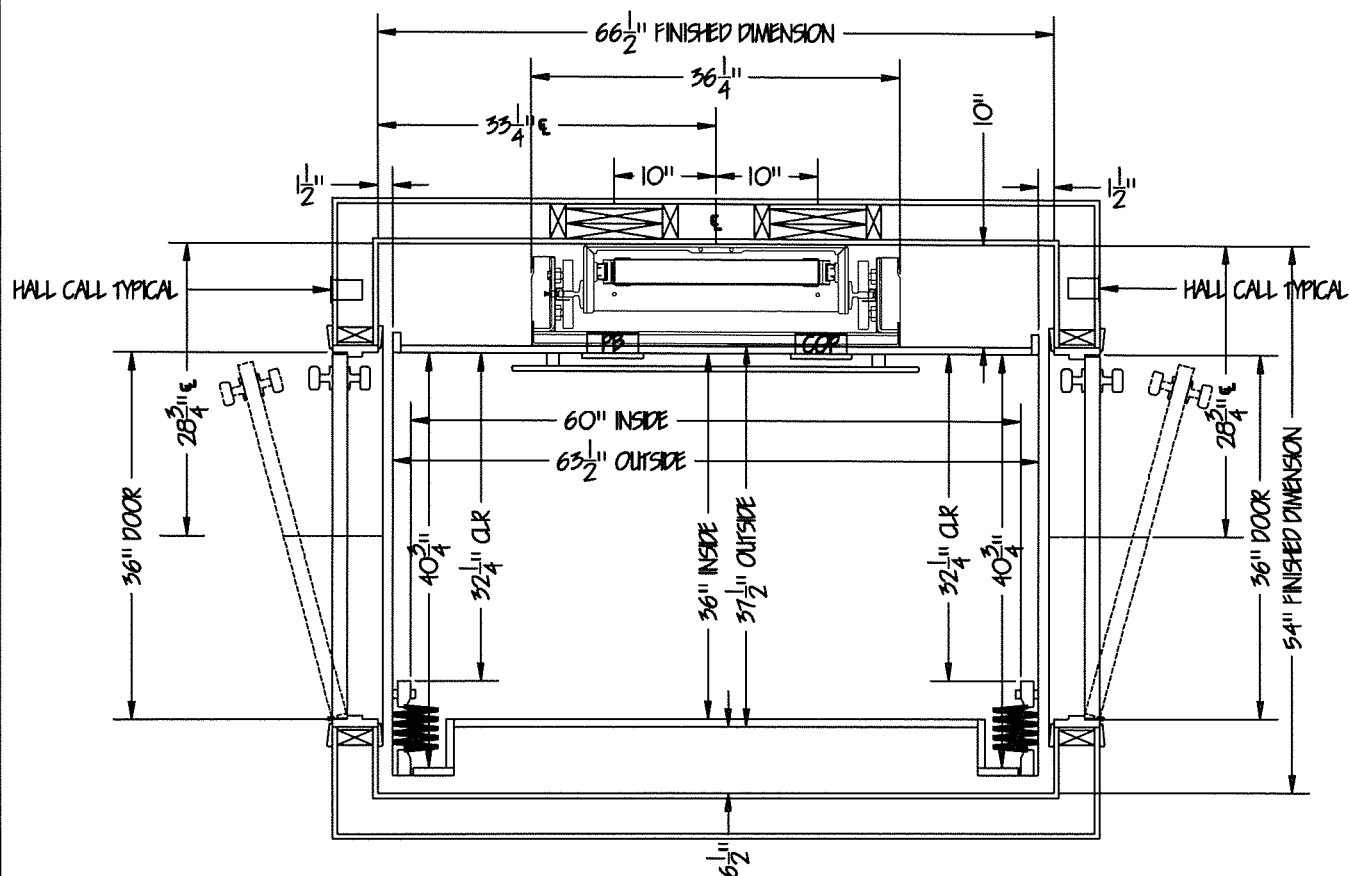


RECOMMENDED:
For superior structural and acoustic performance, 3/4" plywood is recommended on the rail wall



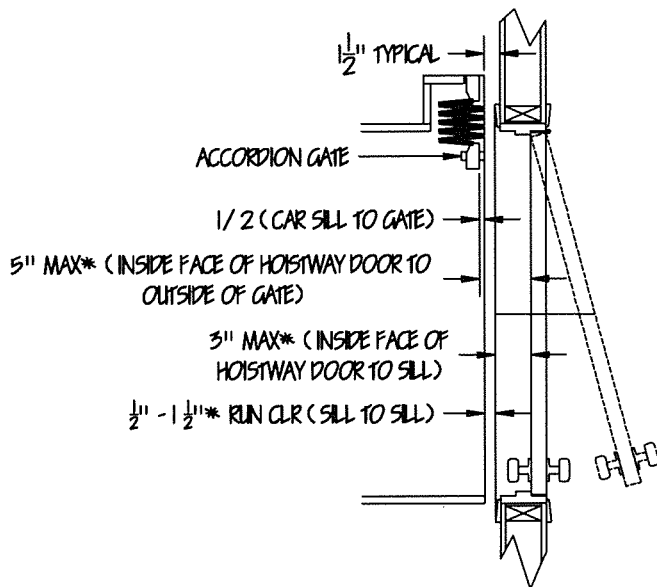
T-RAIL REACTIONS
950#
R1=190
R2=350

FOR FIRE RATING REQUIREMENTS - CHECK LOCAL JURISDICTION



TYPICAL DOOR LOCATION DETAIL

* HORIZONTAL RUNNING CLEARANCES
REQUIRED BY ASME A17.1, SECTION 5.3

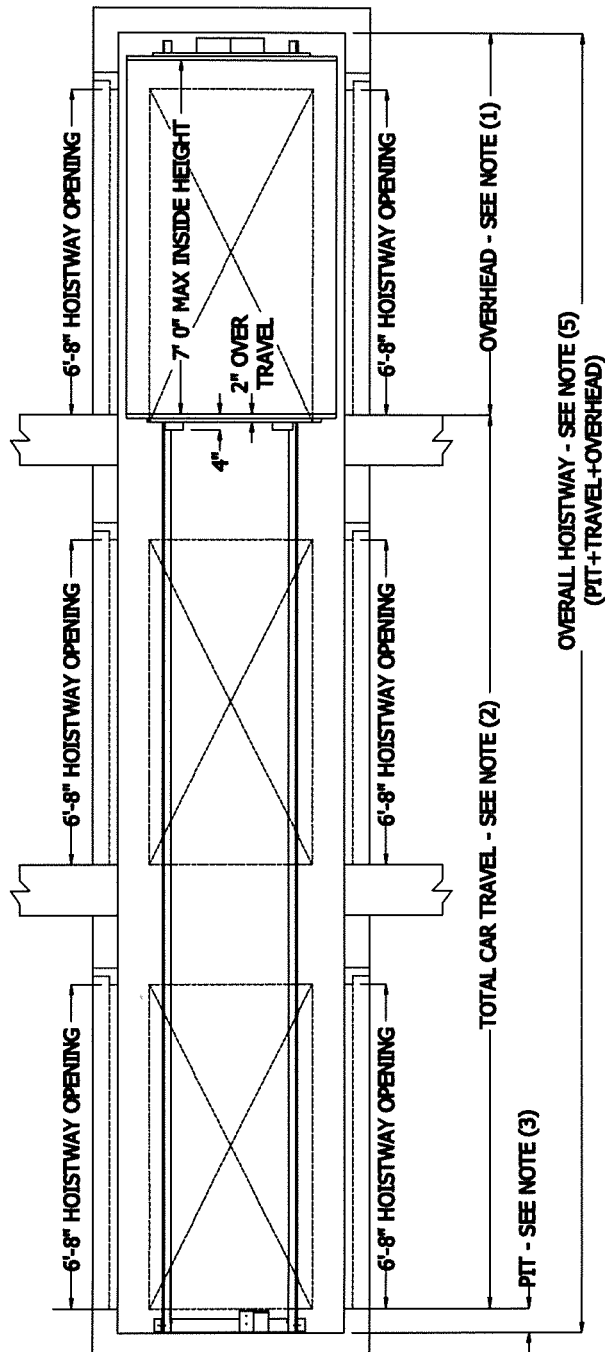


symmetry
ELEVATING SOLUTIONS

WWW.SYMMETRYELEVATOR.COM
866-785-6203

TITLE OPPOSITE LH RH			SCALE SCALE
DRAWN BY	ORIGINAL DATE	DRAWING NO.	REV REV

JOB INFORMATION



NOTES:

1) 8'0" OVERHEAD REQUIRED FOR 7'-0" INTERIOR CAB HEIGHT FOR HYDRAULIC AND REMOTE CONTROLLER IN-LINE GEARED.

9'0" OVERHEAD REQUIRED FOR 7'-0" INTERIOR CAB HEIGHT FOR IN-LINE GEARED WITH CONTROLLER IN THE HOISTWAY. (INCLUDES 9" OF CARTOP CLEARANCE.)

CAB HEIGHT OVER 7'-0" REQUIRES ADDITIONAL OVERHEAD.

2) MINIMUM FLOOR TO FLOOR TRAVEL IS 12" BETWEEN FLOORS (IF TRAVEL IS LESS THAN 12" CONSULT FACTORY)

MAXIMUM FLOOR TO FLOOR TRAVEL:
950LB UNIT= 50'0"

3) MINIMUM PIT DEPTH IS 6".

IMPACT LOAD @ PIT
2400 LBS (950# CAPACITY)
STATIC LOAD @ PIT
4000 LBS (950# CAPACITY)

BUFFER SPRINGS REQUIRE 9" PIT DEPTH MINIMUM.

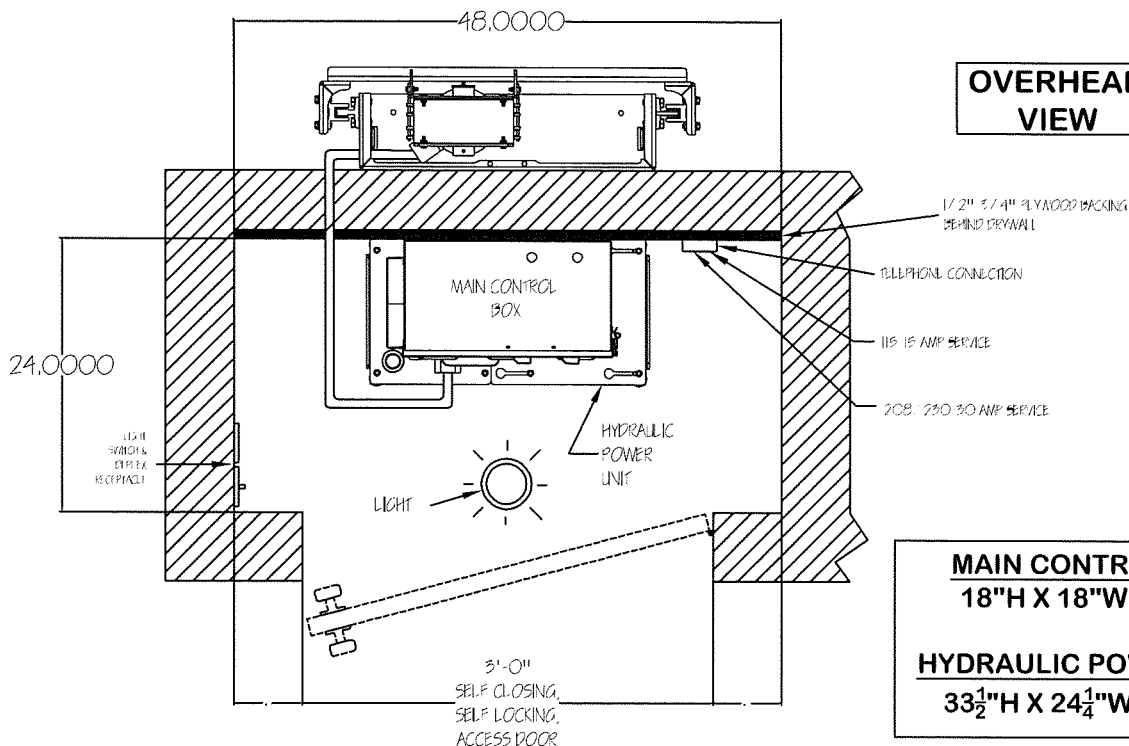
4) CONSULT LOCAL AUTHORITY TO ENSURE COMPLIANCE WITH STATE AND LOCAL CODES.

5) THE HOISTWAY IS REQUIRED TO BE FREE OF ALL PIPES, WIRING, AND OBSTRUCTIONS NOT RELATED TO THE OPERATION OF THE ELEVATOR.

JOB SPECIFIC INFORMATION:

<input type="text"/>	OVERALL HOISTWAY
<input type="text"/>	OVERHEAD
<input type="text"/>	FLOOR TO FLOOR TRAVEL
<input type="text"/>	PIT DEPTH

WWW.SYMMETRYELEVATOR.COM 866-785-6203			
TITLE 3 STOP ELEVATION		SCALE SCALE	
DRAWN BY	ORIGINAL DATE	DRAWING NO.	REV REV
JOB INFORMATION			



MAIN CONTROL BOX
18"H X 18"W X 10"D

HYDRAULIC POWER UNIT
33 $\frac{1}{2}$ "H X 24 $\frac{1}{4}$ "W X 12 $\frac{3}{4}$ "D

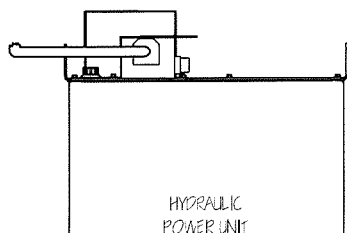
208/230VAC, 30 AMP, Single Phase
(3 Wire Dedicated Circuit)
*Feeding breaker must not be a G.F.I.

Car Light Disconnect
(Fusible and Lockable)

Motor Controller Disconnect
(Fusible and Lockable)

MAIN CONTROL BOX

Telephone Service For Elevator
115VAC, 15 AMP, Dedicated Single Phase
*Feeding breaker must not be a G.F.I.



FRONT VIEW

NOTES:

- 1) THE ELEVATOR MACHINE ROOM LOCATION AND LAYOUT MUST MEET CODE REQUIREMENTS DEFINED BY THE LOCAL AUTHORITY HAVING JURISDICTION.
- 2) 30" WIDE x 36" DEEP CLEAR WORKING SPACE REQUIRED IN FRONT OF THE MAIN CONTROL BOX BY NEC.
- 3) LIGHT SWITCH TO BE LOCATED ON THE STRIKE SIDE OF THE MACHINE ROOM DOOR.
- 4) THE HYDRAULIC POWER UNIT SHOULD BE LOCATED WITHIN 40' FROM THE CYLINDER.
- 5) MACHINE SPACE SHALL BE FREE OF ANY EQUIPMENT OR APPURTENANCES NOT RELATED TO THE ELEVATOR.

MOTION ELEVATING

TITLE COMPACT HYDRAULIC MACHINE ROOM			SCALE NONE
DRAWN BY DLC(R1-DLC)	ORIGINAL DATE 11/13/13	DRAWING NO. 111313-10	REV R1
JOB INFORMATION			