



CONSTRUCTION SUMMARY

285 - 2 - The Barossa 5 (38-5) Elev C

Extras at Time of Sale

CABINETRY

Inv.273	1 - PURCHASER WOULD LIKE TO CREATE AN ISLAND IN THEIR KITCHEN APPROX. 5'-0" X 3'-0"- STANDARD CABNITERY AND STANDARD COUNTERTOP
Line2386	Note:
29Aug15 / 18Apr16	
Inv.273	1 - (J29) MICROWAVE UNDER COUNTER IN BASE CABINET WITH DRAWER BELOW FINISH INTERIOR - TO BE IN ISLAND THAT WAS ADDED TO KITCHEN - AS PER SKETCH
Line3059	Note:
29Aug15 / 18Apr16	

CABINETRY - ACCESSORIES

Inv.273	1 - (J42)-CUT OUT GABLE TO ACCOMODATE ELECTRICAL OUTLET
Line3056	Note:
29Aug15 / 18Apr16	
Inv.273	1 - (J43)-DECORATIVE FINISHED END BASE GABLE FOR APPLIANCE
Line3057	Note:
29Aug15 / 18Apr16	

CEILINGS

Inv.273	1 - OPTIONAL TRAY CEILING- MASTER BEDROOM
Line2374	Note:
29Aug15 / 18Apr16	
Inv.273	1 - SMOOTH CEILINGS - MAIN FLOOR
Line2257	Note:
29Aug15 / 18Apr16	
Inv.273	1 - OPTIONAL COFFERED CEILINGS- LIVING/DINING ROOM
Line2372	Note:
29Aug15 / 18Apr16	
Inv.273	1 - SMOOTH CEILINGS - 2ND FLOOR
Line2371	Note:
29Aug15 / 18Apr16	
Inv.273	1 - OPTIONAL WAFFLE CEILINGS- GREAT ROOM
Line2373	Note:
29Aug15 / 18Apr16	

ELECTRICAL

Inv.273	5 - POT LIGHT - LED - 2ND FLOOR INSULATED CEILING - PRICE IS PER POT LIGHT
Line2376	Note:
29Aug15 / 18Apr16	
Inv.273	1 - COACH LAMP - ADDITIONAL EXTERIOR COACH LAMP INCLUDING OUTLET
Line2378	Note:
29Aug15 / 18Apr16	
Inv.273	1 - CENTRE EXISTING LIGHT IN LIVING/DINING ROOM- AS PER SKETCH
Line2384	Note:
29Aug15 / 18Apr16	



CONSTRUCTION SUMMARY

285 - 2 - The Barossa 5 (38-5) Elev C

Inv.273	<b>9 - POT LIGHT - LED - 1ST FLOOR NON INSULATED CEILING -</b>  8 POT LIGHTS IN GREAT ROOM WAFFLE CEILINGS- AS PER SKETCH 1 POT LIGHT CENTERED IN POWDER ROOM - AS PER SKETCH
Line2375	Note:
29Aug15 / 18Apr16	
Inv.273	<b>1 - CENTER EXISTING KITCHEN LIGHT OVER ISLAND</b>
Line2385	Note:
29Aug15 / 18Apr16	
Inv.273	<b>1 - PLUG ON SEPARATE CIRCUIT - FOR MICROWAVE IN KITCHEN ISLAND</b>
Line3058	Note:
29Aug15 / 18Apr16	
Inv.481	<b>1 - DELETE EXISTING CEILING LIGHT IN FOYER</b>
Line6298	Note:
22Nov15 / 31Mar16	
Inv.481	<b>1 - POT LIGHT - LED - 1st FLOOR NON INSULATED CEILING</b> 5 POT LIGHTS IN LIVING ROOM 4 POT LIGHTS IN KITCHEN AREA 2 POT LIGHTS IN MAIN HALL 2 POT LIGHTS IN FOYER
Line6043	Note: 2 POT LIGHTS ARE PRICED AT REGULAR PRICE ( AS PER PE 273 TO TOTAL 16 LIGHTS) 11 POT LIGHTS ARE PRICED AT DISCOUNTED PRICE SPACE OUT LIGHTS EVENLY THOUGHOUT LIVING/DINING AND KITCHEN
22Nov15 / 31Mar16	
Inv.481	<b>2 - SWITCH - 2 WAY SWITCH FOR LIGHTING -</b> FOR POT LIGHTS IN KITCHEN AREA - PLACE SWITCH ON MAIN HALLWAY WALL CLOSEST TO PANTRY - AS PER SKETCH FOR POT LIGHTS IN DINING/LIVING - PLACE SWITCH ON SHORT WALL IN ROOM - AS PER SKETCH
Line6044	Note:
22Nov15 / 31Mar16	
Inv.743	<b>1 - PLEASE ENSURE EXISTING CEILING LIGHT IN SUNKEN FOYER IS CENTRED</b>
Line6854	Note:
30Apr16 / 12May16	
Inv.743	<b>7 - POT LIGHT - LED - 1ST FLOOR NON INSULATED CEILING -</b>  6 POT LIGHTS IN BREAKFAST AREA 1 ADDITIONAL POT LIGHT IN KITCHEN AREA
Line6850	Note:
30Apr16 / 12May16	
Inv.743	<b>2 - POT LIGHT - LED - 1ST FLOOR NON INSULATED CEILING - AS PER SKETCH</b>  2 ADDTIONAL POT LIGHTS IN MAIN HALLWAY
Line6852	Note:
30Apr16 / 12May16	
Inv.743	<b>1 - PLEASE ENSURE 6 POT LIGHTS IN BREAKFAST AREA ARE ON ONE SWITCH</b> THE 5 POT LIGHTS IN THE KITCHEN AREA ARE ON ANOTHER SWITCH AND THE CEILING LIGHT OVER THE ISLAND IS ON A SEPERATE ONE AS WELL (3 SEPERATE SWITCHES )
Line6856	Note:
30Apr16 / 12May16	



CONSTRUCTION SUMMARY

285 - 2 - The Barossa 5 (38-5) Elev C

Inv.743	5 - POT LIGHT - LED - 1ST FLOOR NON INSULATED CEILING - AS PER SKETCH
Line6851	Note: 5 ADDITIONAL POT LIGHTS IN LIVING/DINING ROOM
30Apr16 / 12May16	
Inv.743	1 - DELETE EXISTING CEILING LIGHT IN MAIN HALL AND USE SWITCH FOR POT LIGHTS PURCHASED
Line6853	Note:
30Apr16 / 12May16	
Inv.743	1 - DELETE EXISITING CEILING LIGHT IN BREAKFAST AREA AND USE FOR POT LIGHTS PURCHASED
Line6855	Note:
30Apr16 / 12May16	

HARDWOOD FLOORING

Inv.273	1 - HARDWOOD FLOORING - STANDARD SERIES - 2 1/4 MERCIER SOLID OAK - UPPER HALL
Line2380	Note:
29Aug15 / 18Apr16	
Inv.273	1 - HARDWOOD FLOORING - STANDARD SERIES - 2 1/4 MERCIER SOLID OAK - LANDING
Line2379	Note:
29Aug15 / 18Apr16	

PLUMBING

Inv.273	1 - WATERFALL SHOWER HEAD ON CEILING - MOEN S112- KEEPING STANDARD SHOWER FIXTURES ON WALL, PRICE INCLUDES FIXTURE, TRANSFER VALVE , CEILING MOUNT
Line2381	Note:
29Aug15 / 18Apr16	

STAIRS AND RAILINGS / NOSINGS

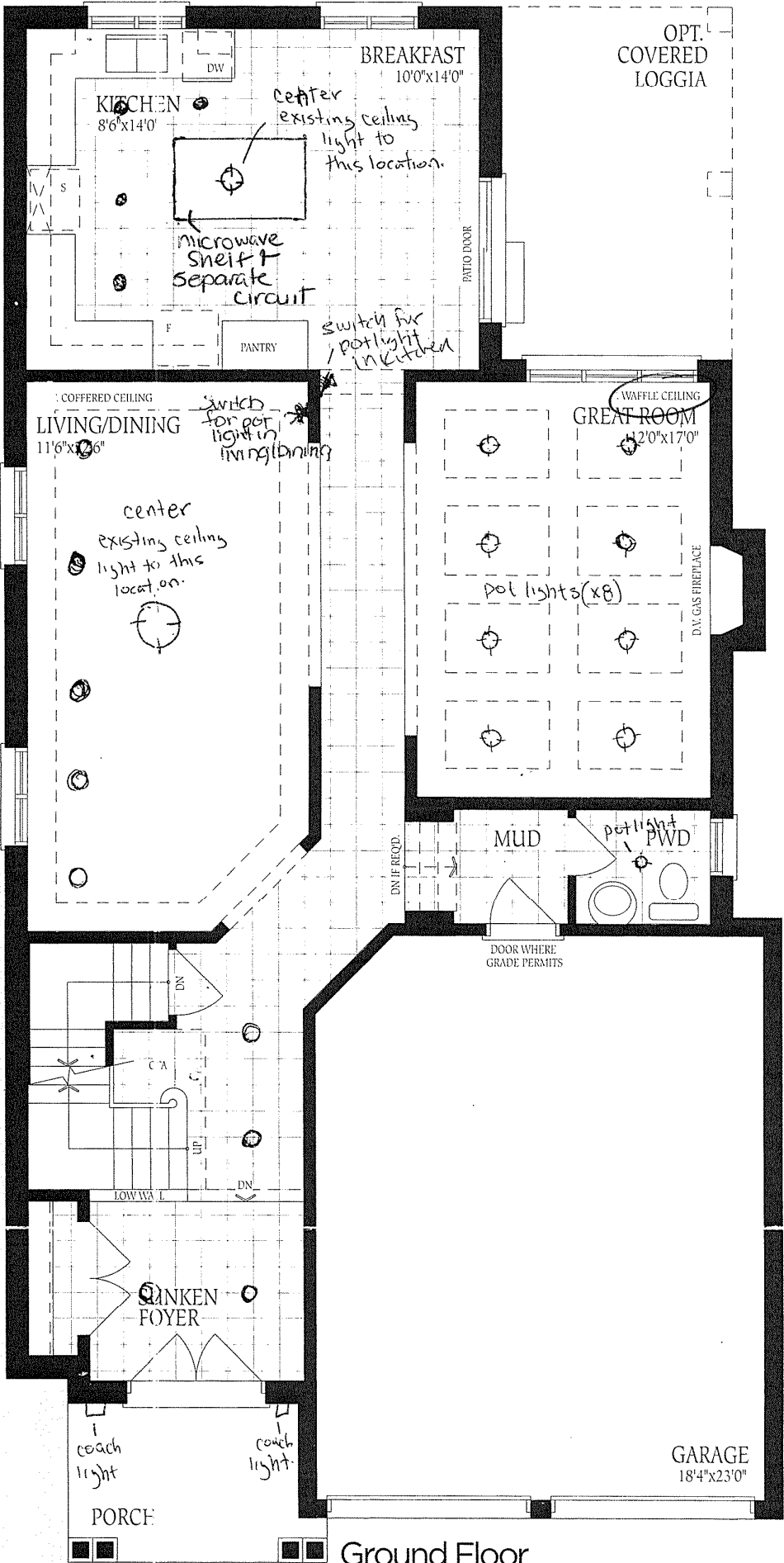
Inv.273	1 - UPGRADE RAILING - UPGRADE 2 - LEVEL 1 - WROUGHT IRON- BLACK
Line2382	Note:
29Aug15 / 18Apr16	

WINDOWS - BASEMENT

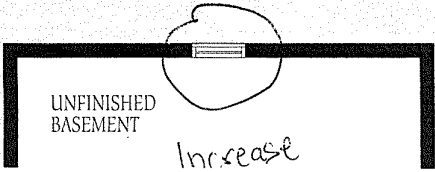
Inv.273	1 - BASEMENT WINDOW - 30 X 30
Line2383	Note:
29Aug15 / 18Apr16	

5'-0" x 3'-0"  
Island added  
in Kitchen

Lot 285  
Barossa 5  
Elev 'C'



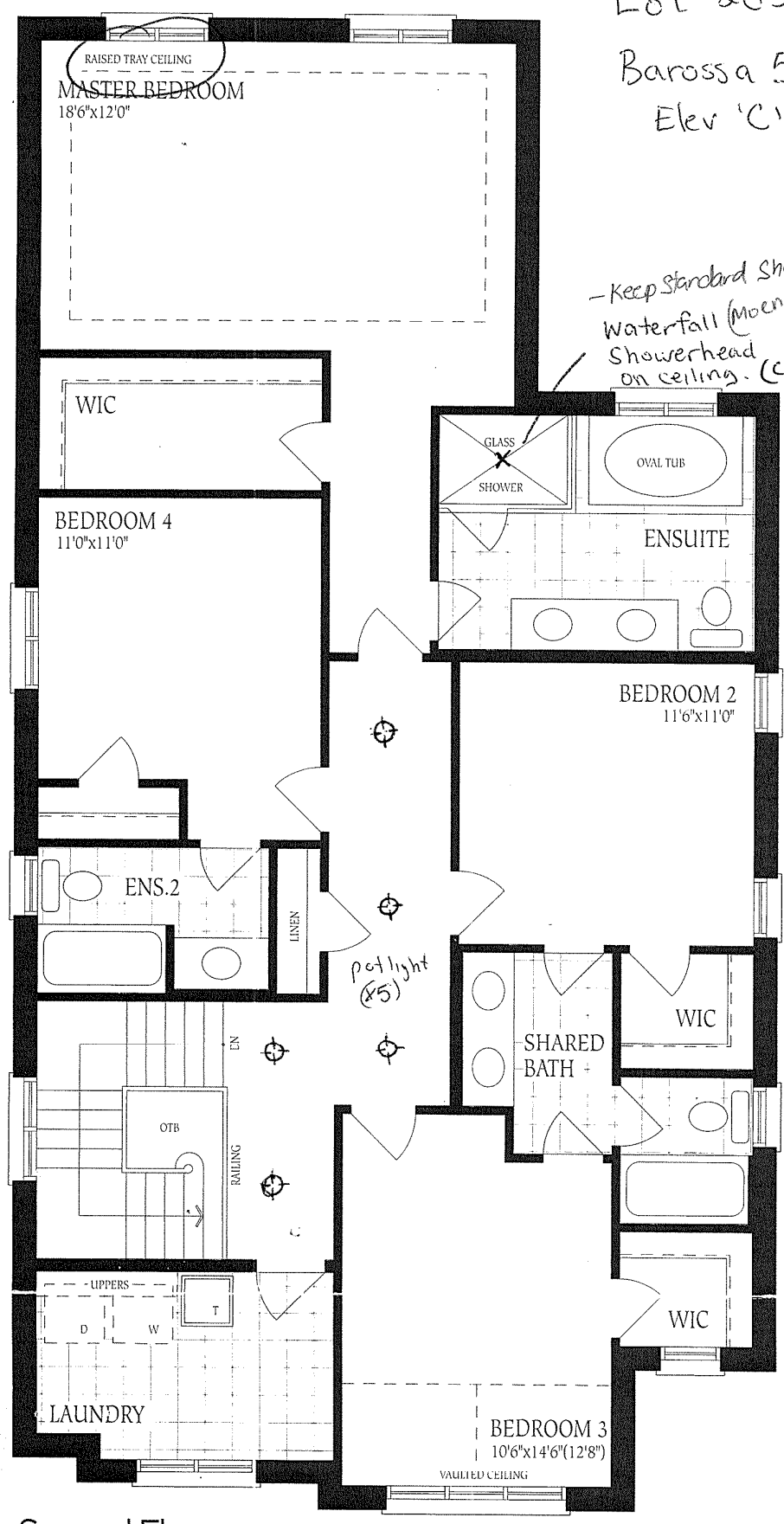
Ground Floor



Lot 285

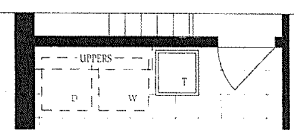
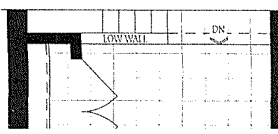
Barossa 5

Elev 'C'



- Keep standard shower fixtures on wall  
Waterfall (Moen S112)  
Showerhead on ceiling. (ceiling mount)

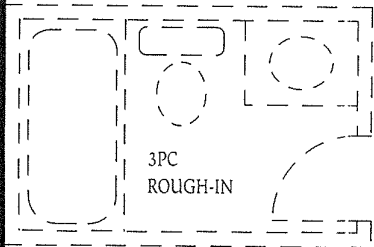
Second Floor  
Elevation A



UNFINISHED  
BASEMENT

Increase  
to 30x30

Barossa 5  
Elev 'C'  
Lot  
# 285



LOCATION  
MAY VARY

