



CONSTRUCTION SUMMARY

281 - 2 - The Rideau 8 (42-8C) Elev A Opt 5 Bed

Extras at Time of Sale

5 BEDROOM PLAN <i>Worksheet</i> Note:
GRANITE COUNTER-TOPS IN KITCHEN AND MASTER ENSUITE FROM VENDOR STANDARD SAMPLES. KITCHEN TO HAVE STAINLESS STEEL UNDERMOUNT SINK <i>Worksheet</i> Note:

BASEMENT WINDOWS

Inv.551	1 - EGRESS WINDOW IN BASEMENT - AS PER SKETCH
	(INCLUDED IN PRICING ON ITEM #6)
Line6265	Note:
10Jan16 / 21Apr16	

CEILINGS

Inv.551	1 - SMOOTH CEILINGS - MAIN FLOOR
Line5233	Note:
10Jan16 / 21Apr16	

Inv.551	1 - SMOOTH CEILINGS - 2ND FLOOR
Line5234	Note:
10Jan16 / 21Apr16	

Inv.551	1 - WAFFLE CEILINGS IN GREAT ROOM
Line5257	Note:
10Jan16 / 21Apr16	

Inv.551	1 - TRAY CEILINGS IN MASTER BEDROOM
Line5258	Note:
10Jan16 / 21Apr16	

CONSTRUCTION

Inv.551	1 - FINISH BASEMENT AS PER SKETCH
	PRICE INCLUDES BUILDER STANDARD CEILING LIGHT FIXTURES IN ALL ROOMS , LIGHT SWITCHES AND ELECTRICAL OUTLETS AS WELL AS STANDARD BASEBOARD AND TRIM
Line6246	Note: TO BE FULLY DRYWALLED INCLUDING CEILING TO BE TILED THROUGHOUT (UPGRADE 1 TILE)
10Jan16 / 21Apr16	

Inv.551	1 - DELETE COLD CELLAR - AS PER SKETCH
Line6250	Note:
10Jan16 / 21Apr16	

Inv.551	1 - DOUBLE FRENCH DOORS WITH FLAT GLASS IN BASEMENT FOR "EXCERCISE ROOM"- AS PER SKETCH
Line6247	Note:
10Jan16 / 21Apr16	

Inv.551	1 - FINISH BATHROOM IN STANDARD FEATURES WITH GLASS SHOWER IN LIEU OF TUB/SHOWER COMBO
Line6249	Note:
10Jan16 / 21Apr16	

DOOR - EXTERIOR



CONSTRUCTION SUMMARY

281 - 2 - The Rideau 8 (42-8C) Elev A Opt 5 Bed

Inv.568	1 - MINETT SERIES 8'-0" HIGH SOLID 2-PANEL ARCH (M-8) 2SL 3'-6" X 8'-0" WITH SANDBLAST SIDELIGHTS 1" CLEAR SURROUND MULTIPOINT LOCKING SYSTEM HANDLE AND TRIM SET : ALPINE
Line6267	Note:
19Jan16 / 21Apr16	

ELECTRICAL

Inv.551	1 - CEILING OUTLET - ON NEW SWITCH - EXTRA INTERIOR CEILING OUTLET ROUGH IN NO FIXTURE ON NEW SWITCH IN LIVING ROOM DINING ROOM - AS PER SKETCH
Line5238	Note:
10Jan16 / 21Apr16	
Inv.551	1 - SWITCH - 2 WAY SWITCH FOR LIGHTING - FOR POT LIGHTS IN BREAKFAST AREA
Line5239	Note:
10Jan16 / 21Apr16	
Inv.551	1 - SWITCH - 2 WAY SWITCH FOR LIGHTING - FOR POT LIGHTS IN KITCHEN AREA
Line5240	Note:
10Jan16 / 21Apr16	
Inv.551	1 - SWITCH - 2 WAY SWITCH FOR LIGHTING - FOR VALANCE LIGHTING IN KITCHEN
Line5241	Note:
10Jan16 / 21Apr16	
Inv.551	1 - MOVE EXISTING CEILING LIGHT IN KITCHEN OVER BREAKFAST BAR-AS PER SKETCH
Line5261	Note:
10Jan16 / 21Apr16	
Inv.551	1 - VALANCE LIGHTING UNDER KITCHEN CUPBOARD -INCLUDES ROUGH INS - PRICE IS PER 4 FOOT SECTION
Line5243	Note:
10Jan16 / 21Apr16	
Inv.551	2 - COACH LAMP - ADDITIONAL EXTERIOR STANDARD BLACK COACH LAMP INCLUDING OUTLET- FLANKING EXISTING LIGHT ON BOTH FRONT AND BACK DOOR -AS PER SKETCH
Line5244	Note:
10Jan16 / 21Apr16	
Inv.551	18 - POT LIGHT - LED - 1ST FLOOR NON INSULATED CEILING - AS PER SKETCH KITCHEN (X6) GREAT ROOM (X8)(USE EXISTING SWITCH) BREAKFAST AREA (X4)
Line5260	Note:
10Jan16 / 21Apr16	
Inv.551	1 - REMOVE EXISITNG CELILING LIGHT IN GREAT ROOM PLEASE USE SWITCH FOR POT LIGHTS BEING INSTALLED
Line5262	Note:
10Jan16 / 21Apr16	
Inv.551	1 - 200 AMP SERVICE - UPGRADE TO
Line5264	Note:
10Jan16 / 21Apr16	



CONSTRUCTION SUMMARY

281 - 2 - The Rideau 8 (42-8C) Elev A Opt 5 Bed

Inv.551	1 - EXTERIOR INTERIOR DUPLEX OUTLET NO EXTERIOR SWITCH- IN MASTER WALK IN CLOSET - AS PER SKETCH
*****DO NOT INSTALL -NOT TO CODE*****	
Line6241	Note:
10Jan16 / 21Apr16	
Inv.551	13 - POT LIGHT - LED - IN FINISHED BASEMENT ON A NEW SWITCH - AS PER SKETCH
Line6251	Note:
10Jan16 / 21Apr16	

HARDWOOD FLOORING

Inv.551	1 - HARDWOOD FLOORING - STANDARD SERIES - 2 1/4 MERCIER SOLID OAK - UPPER HALL
Line5245	Note:
10Jan16 / 21Apr16	
Inv.551	1 - HARDWOOD FLOORING - STANDARD SERIES - 2 1/4 MERCIER SOLID OAK - LANDING
Line5246	Note:
10Jan16 / 21Apr16	

HEATING AND AIR CONDITIONING

Inv.551	1 - GAS LINE - ROUGH IN GAS LINE - BBQ -AS PER SKETCH
Line5247	Note:
10Jan16 / 21Apr16	
Inv.551	1 - AIR CONDITIONER - 2.5 TON
Line5248	Note:
10Jan16 / 21Apr16	

LANDSCAPE PACKAGE

Inv.551	1 - LANDSCAPE PACKAGE - WEXFORD PAVERS - LANDING - PARTIAL PRICE - FINAL PRICE MUST INCLUDE STEPS WITH APPROPRIATE RISER COUNT
Line5249	Note:
10Jan16 / 21Apr16	
Inv.551	1 - LANDSCAPE PACKAGE - STEP - 1 RISER
Line5250	Note:
10Jan16 / 21Apr16	

PLUMBING

Inv.551	1 - DRAIN - ADDITIONAL DRAIN-IN LAUNDRY ROOM - AS PER SKETCH
Line5251	Note:
10Jan16 / 21Apr16	
Inv.551	1 - WATERFALL SHOWER HEAD - MOEN S112 MOUNTED ON CEILING WITH TRANSFER VALVE PURCHASER KEEPING EXISTING STANDARD SHOWER HEAD ON WALL
Line5252	Note:
10Jan16 / 21Apr16	

STAIRS AND RAILING

Inv.551	1 - STAIRS - TO BASEMENT - OAK
Line5253	Note:
10Jan16 / 21Apr16	



CONSTRUCTION SUMMARY

281 - 2 - The Rideau 8 (42-8C) Elev A Opt 5 Bed

Inv.551	1 - UPGRADE RAILING - UPGRADE 2 - LEVEL 1 - WROUGHT IRON- BLACK
Line5254	Note:
10Jan16 / 21Apr16	

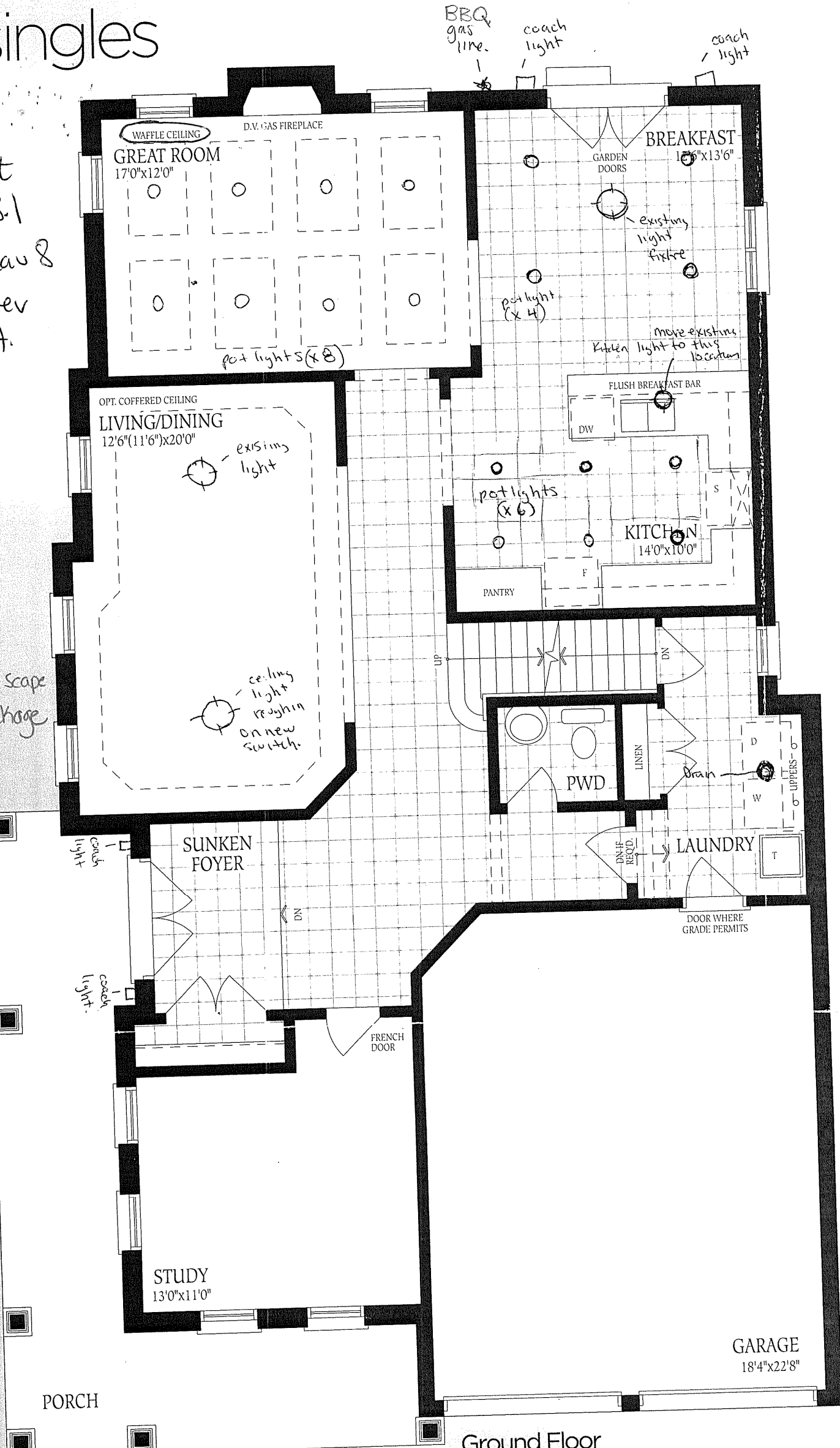
WINDOWS - BASEMENT

Inv.551	3 - BASEMENT WINDOW - 30 X 30- THREE WINDOWS - AS PER SKETCH
Line5255	Note:
10Jan16 / 21Apr16	

singles

Lot
28.1
Rideau 8
Elev
A.

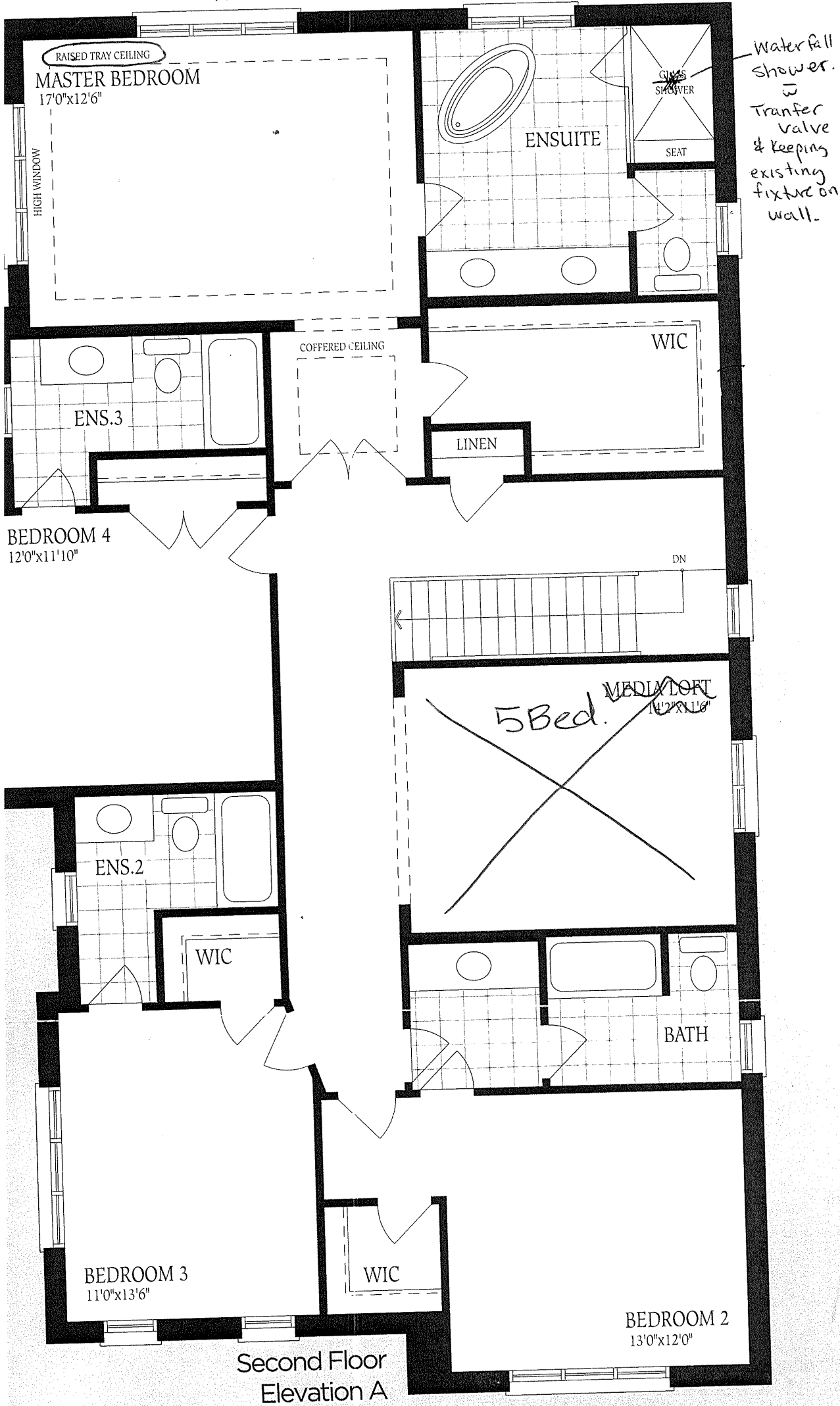
* Land
Scape
Package



Ground Floor
Elevation A

Lot 281
Rideav 8
Elev A.

Sketch 2a



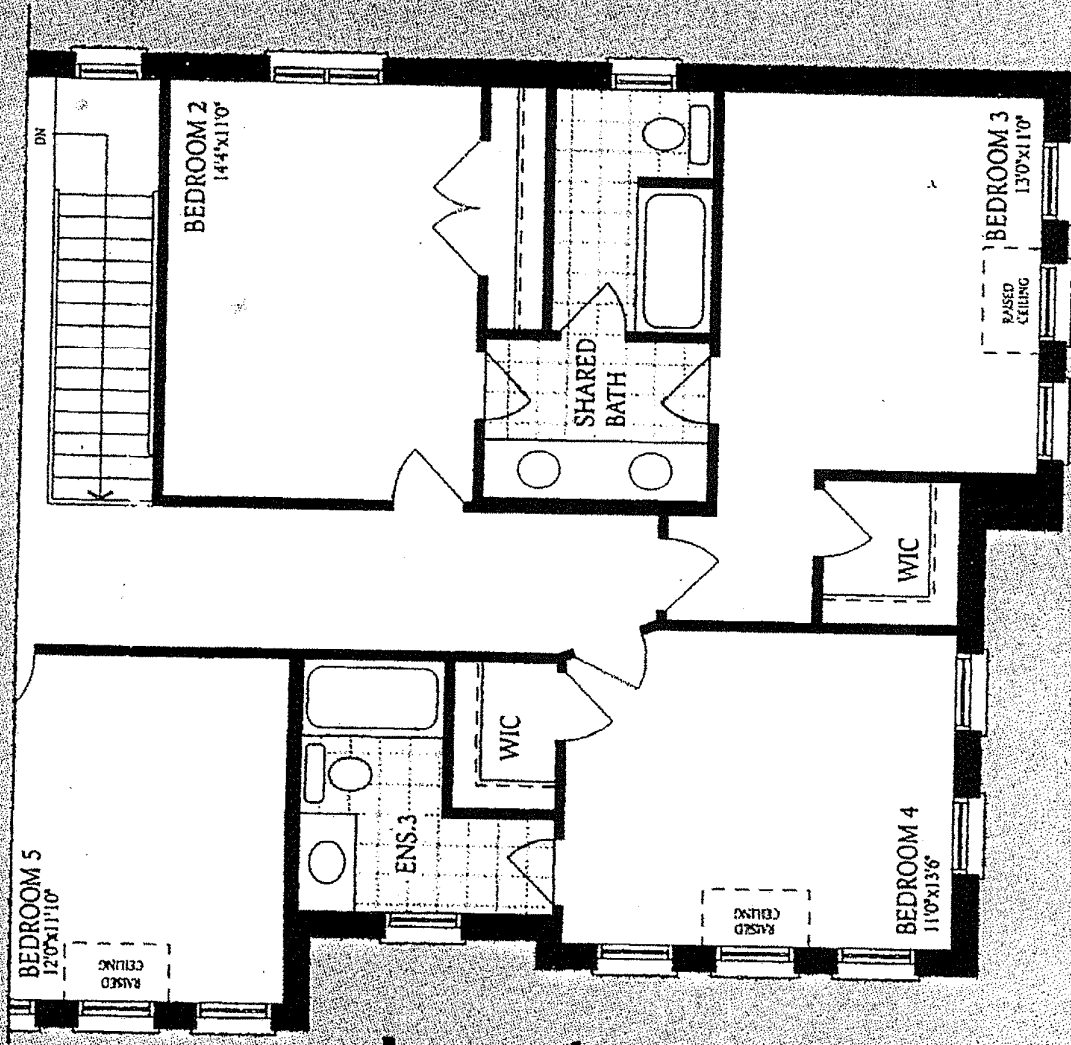
GCE



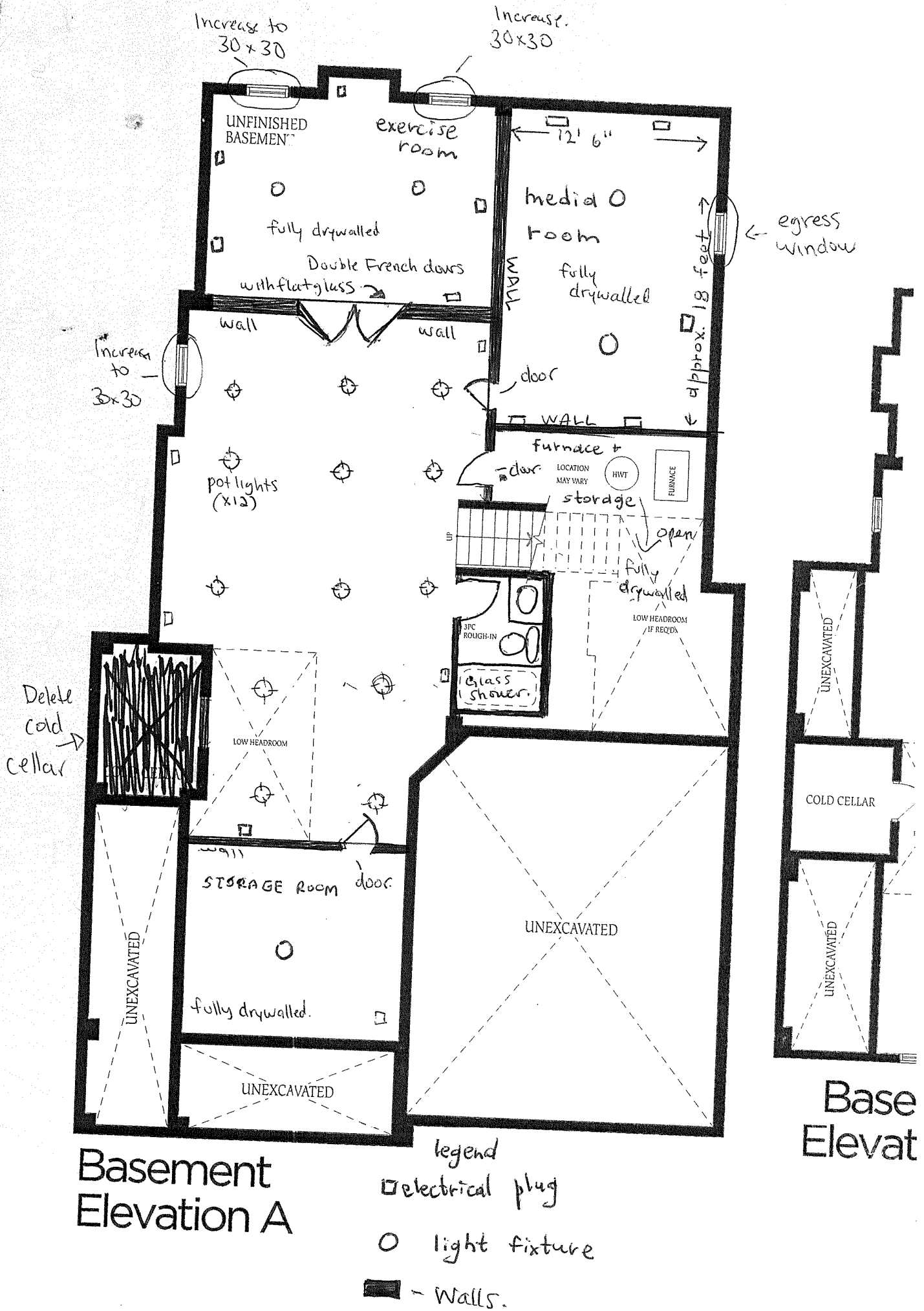
Sketch 2b

Opt. Second Floor Elevation A 5 Bedroom + 4 Bath

Lot 281
Rideau 8 - 5Bed
Elev A.



Lot # 281



UNITECH
EXTERIOR DOORS

MINETT SERIES 8' HIGH SOL



(M-8) 2SL 3'6" x 8'0" COLOUR: UNI-1A
SHOWN WITH SANDBLAST SIDELITES
1" CLEAR SURROUND