



CONSTRUCTION SUMMARY

264 - 2 - The Barossa 8 (38-8C) Elev B Opt 2nd Floor

Extras at Time of Sale

CONSTRUCTION

Inv.279	3 - INCREASE DOOR SIZE TO 8FT ON MAIN FLOOR- FRONT ENTRANCE CLOSET, LAUNDRY ROOM , POWDER ROOM
Line2053	Note:
30Aug15 / 21Apr16	
Inv.279	1 - REMOVE OPENING OF CLOSET IN BEDROOM #2 AND MAKE IT AN ADDITIONAL CLOSET IN MASTER BEDROOM, SEE SKETCH FOR DOOR SWING- PER SKETCH
Line2069	Note:
30Aug15 / 21Apr16	
Inv.279	1 - IF LAUNDRY ROOM DOES NOT REQUIRE A STEP DOWN CAN THE DOOR SWING BE SWITCHED TO GO INTO LAUNDRY ROOM INSTEAD OF HALLWAY
	-IF STEPS ARE REQUIRED, DOOR SWING WILL REMAIN TO OPEN IN HALLWAY AND FULL AMOUNT SHALL BE CREDITED BACK TO PURCHASER
Line5691	Note: *****THERE WILL BE STEPS *** DO NOT CHANGE DOOR SWING ***** LEAVE DOOR SWING TO STANDARD PLAN
30Aug15 / 21Apr16	

ELECTRICAL

Inv.279	1 - CEILING OUTLET - ON NEW SWITCH - EXTRA INTERIOR CEILING OUTLET ROUGH IN NO FIXTURE ON NEW SWITCH- CENTRED OVER BREAKFAST BAR
Line2048	Note:
30Aug15 / 21Apr16	

HARDWOOD FLOORING

Inv.279	1 - HARDWOOD FLOORING - STANDARD SERIES - 2 1/4 MERCIER SOLID OAK - UPPER HALL
Line2893	Note:
30Aug15 / 21Apr16	

HEATING & VENTILATION

Inv.279	1 - GAS LINE - ROUGH IN GAS LINE -FOR STOVE - IF ON GROUND FLOOR - ECT
Line2049	Note:
30Aug15 / 21Apr16	

WINDOWS - BASEMENT

Inv.279	6 - BASEMENT WINDOW - 30 X 30- ALL 6 WINDOWS
Line2050	Note:
30Aug15 / 21Apr16	

arossa 8

ELEV. A

ELEV. B

ELEV. C

3220

3200

3218

SQ.FT.

OPT. A

OPT. B

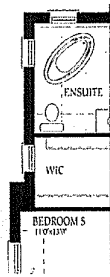
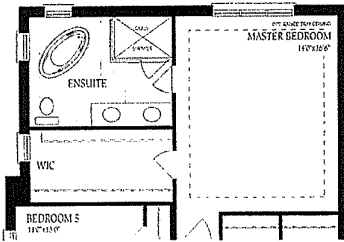
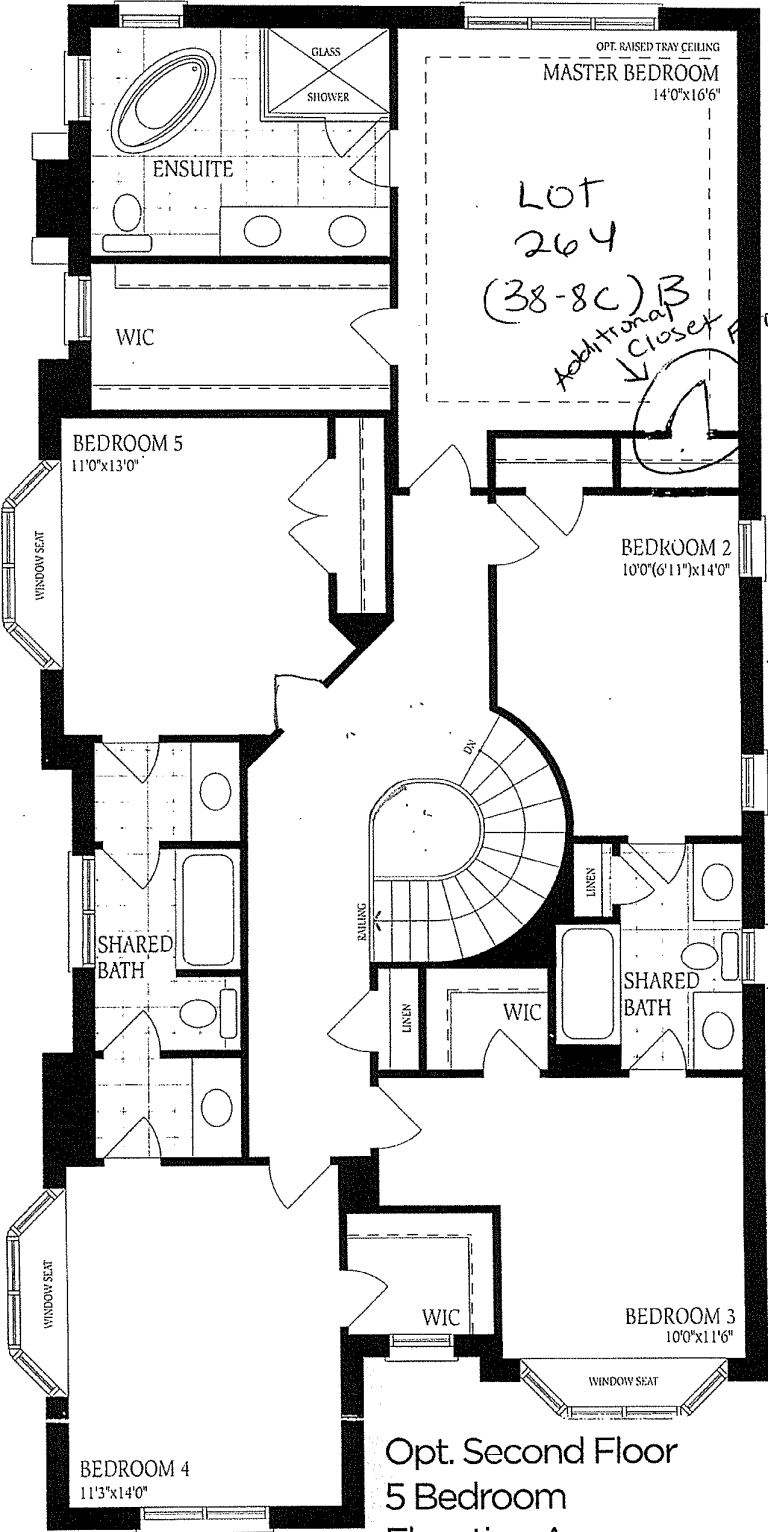
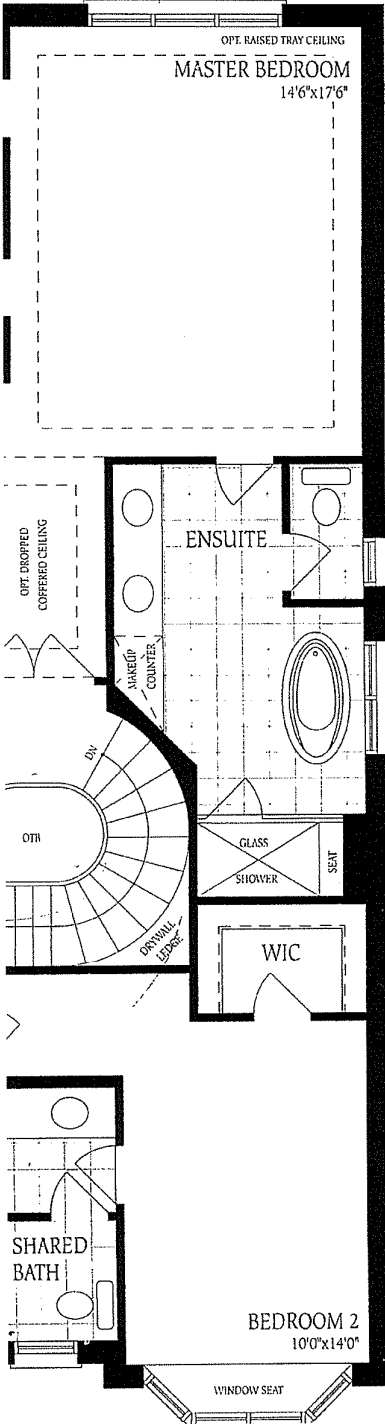
OPT. C

3263

3242

3261

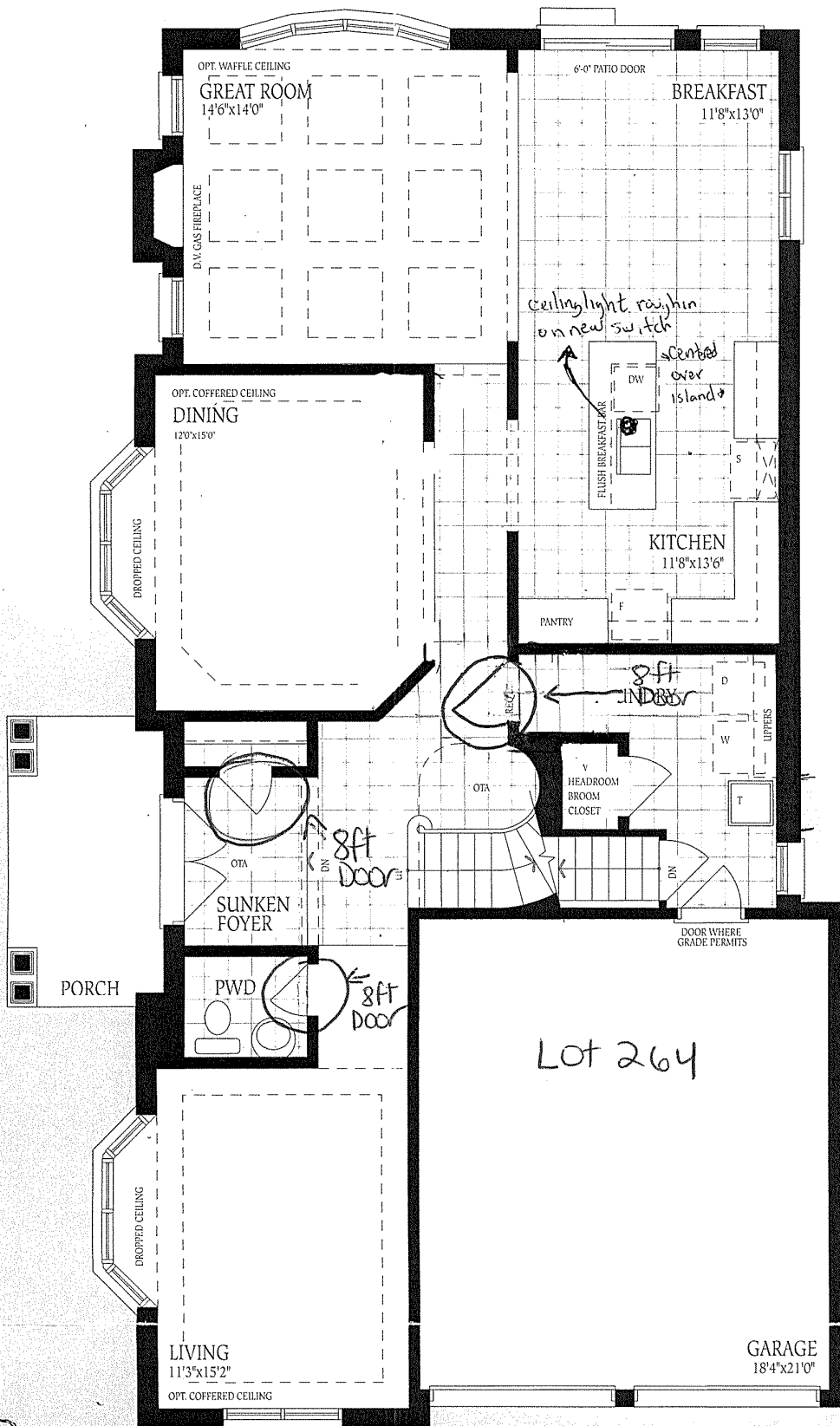
SQ.FT.



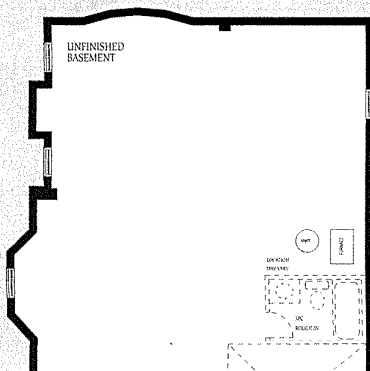
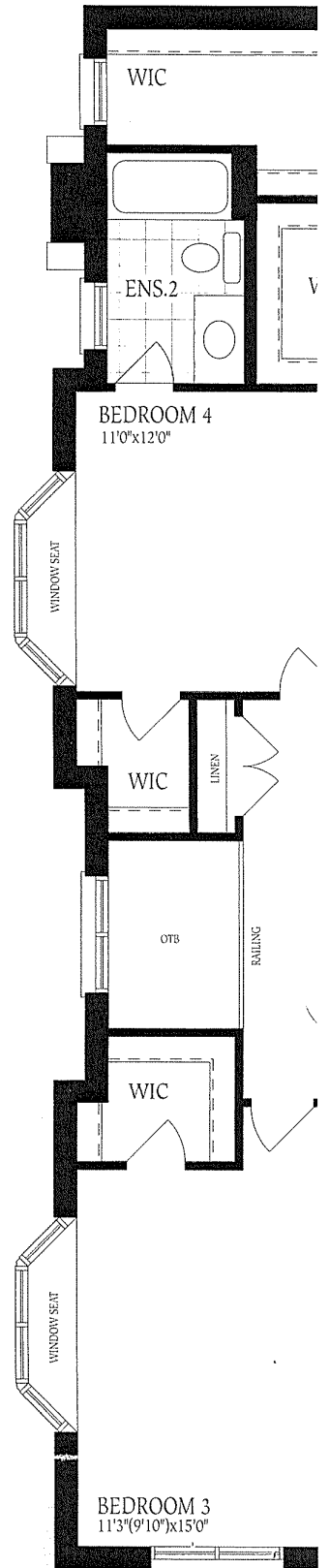
38' singles

Lot 264
Barossa 8c

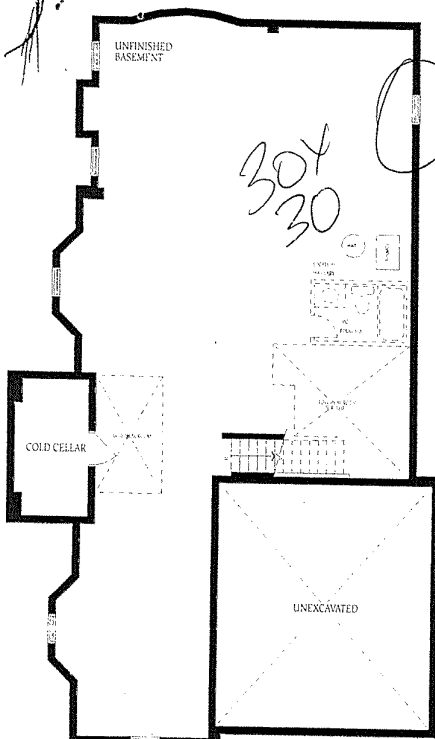
The



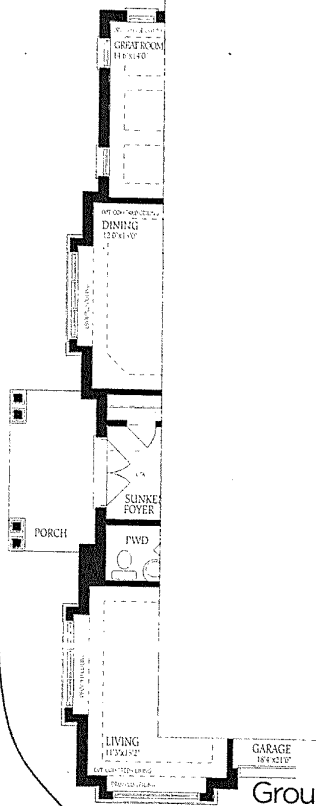
Ground Floor
Elevation A



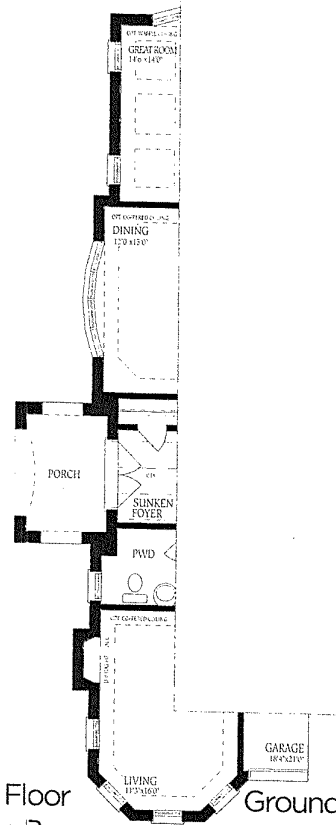
Ground Floor
Elevation A



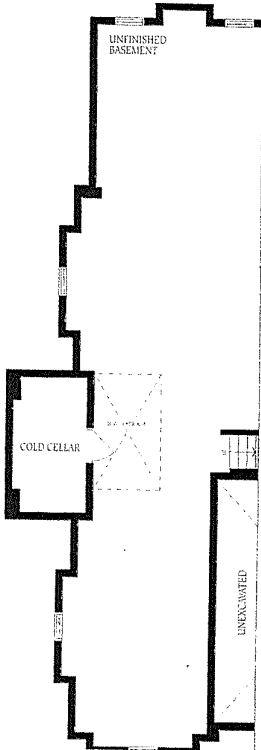
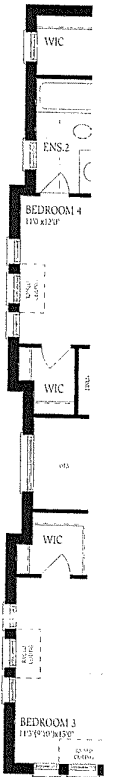
Basement
Elevation A



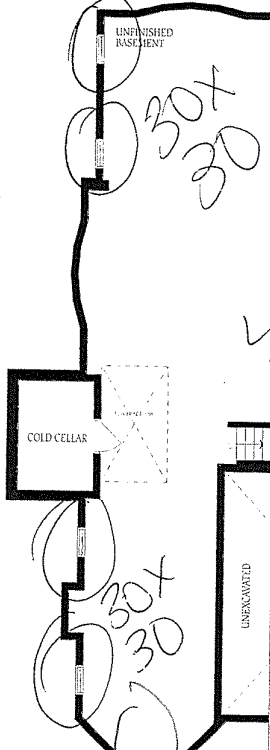
Ground Floor
Elevation B



Ground Floor
Elevation C



Basement
Elevation B



Basement
Elevation C

LOT 264
Barossa BC

The
cons
of flo
floor