



CONSTRUCTION SUMMARY

8 - 1 - The Barossa 3 (38-3) Elev B

CEILINGS

Inv.16	1 - SMOOTH CEILINGS - MAIN FLOOR
Line170	Note:
19May15 / 9Sep15	
Inv.16	1 - SMOOTH CEILINGS - 2ND FLOOR
Line171	Note:
19May15 / 9Sep15	
Inv.16	1 - OPTIONAL COFFERED CEILINGS - DINING ROOM - PRICE INCLUDES PAINT
Line172	Note:
19May15 / 9Sep15	
Inv.16	1 - OPTIONAL TRAY CEILINGS - MASTER BEDROOM- PRICE INCLUDES PAINT
Line173	Note:
19May15 / 9Sep15	

CONSTRUCTION

Inv.16	1 - REMOVE WALL BETWEEN KITCHEN AND FAMILY ROOM COMPLETELY, AS PER SKETCH
Line183	Note:
19May15 / 9Sep15	

ELECTRICAL

Inv.16	1 - POT LIGHT - HALOGEN - 1ST FLOOR NON INSULATED LOW VOLTAGE HALOGEN POT LIGHTS 4" - ONE LIGHT IN DINING COFFERED CEILING, ON A SEPERATE SWITCH, AS PER SKETCH
Line176	Note:
19May15 / 9Sep15	
Inv.16	1 - POT LIGHT - HALOGEN - 2ND FLOOR INSULATED LOW VOLTAGE HALOGEN POT LIGHTS 4" - IN MASTER BEDROOM - OFF CENTRED - AS PER SKETCH
Line1100	Note:
19May15 / 9Sep15	

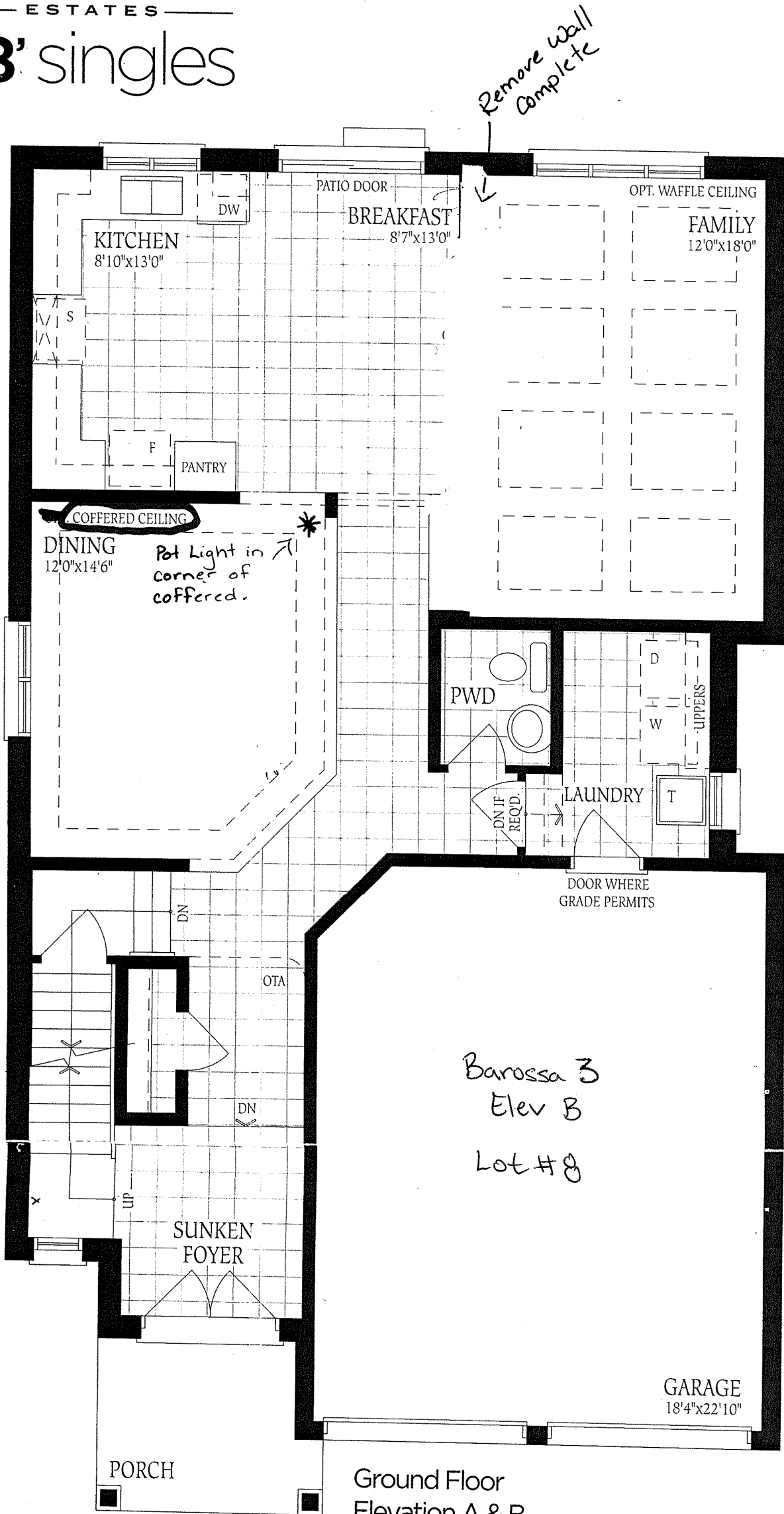
HARDWOOD FLOORING

Inv.16	1 - HARDWOOD - STANDARD - 2¼ MERCIER SOLID OAK - STANDARD COLOURS - LANDING
Line179	Note:
19May15 / 9Sep15	
Inv.16	1 - HARDWOOD - STANDARD - 2¼ MERCIER SOLID OAK - STANDARD COLOURS - UPPER HALL
Line180	Note:
19May15 / 9Sep15	

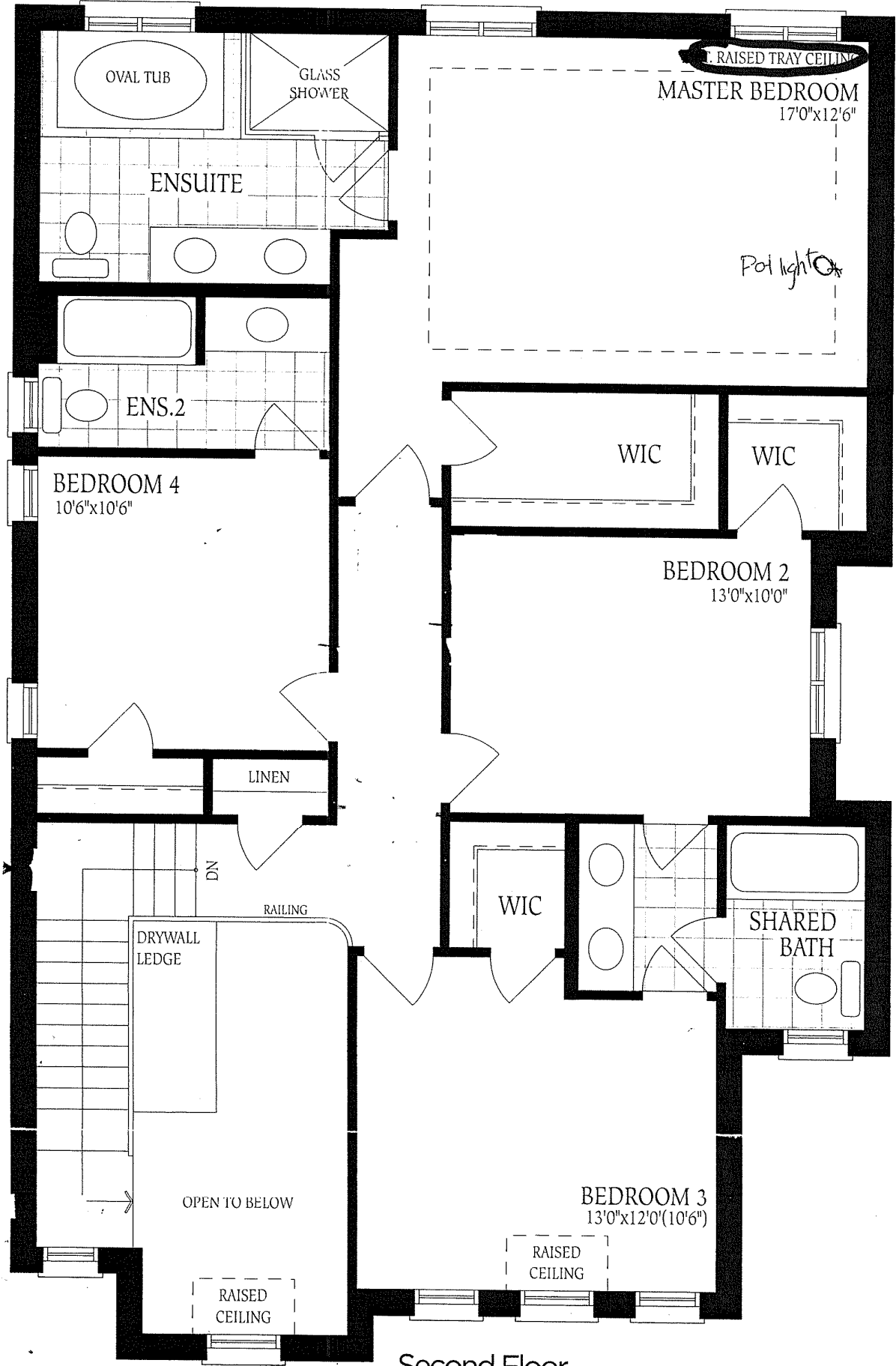
STAIRS AND RAILINGS / NOSINGS

Inv.16	1 - UPGRADE 2 LEVEL 1 WROUGHT IRON RAILINGS - GREY COLOUR
Line182	Note:
19May15 / 9Sep15	

38' singles



Barossa 3
Elev 'B' Lot #8



Second Floor
Elevation A