



CONSTRUCTION SUMMARY

Block 408 Unit 1 - 1 - The Napa 8 (TH-8C) Elev A
CEILINGS

Inv.35	1 - SMOOTH CEILINGS - MAIN FLOOR
Line1372	Note:
28May15 / 9Sep15	
Inv.35	1 - SMOOTH CEILINGS - 2ND FLOOR
Line1371	Note:
28May15 / 9Sep15	

CONSTRUCTION

Inv.35	1 - ADD ADDITIONAL COMPLETE LAUNDRY ROUGH IN , IN BASEMENT - AS PER SKETCH
Line568	Note:
28May15 / 9Sep15	
Inv.35	1 - CHANGE LOCATION OF ENTRANCE TO MASTER BEDROOM- AS PER SKETCH
Line569	Note:
28May15 / 9Sep15	
Inv.35	1 - REMOVE DOOR INTO BATHROOM FROM BEDROOM 3
Line570	Note:
28May15 / 9Sep15	
Inv.35	1 - EXTEND WALL IN BATHROOM TO ACCOMODATE VANITY - AS PER SKETCH
Line571	Note:
28May15 / 9Sep15	
Inv.35	1 - MOVE DOOR LOCATION IN BEDROOM 3 - AS PER SKETCH
Line572	Note:
28May15 / 9Sep15	
Inv.35	1 - CHANGE DIRECTION OF DOOR SWING IN BATHROOM AS PER SKETCH
Line574	Note:
28May15 / 9Sep15	

ELECTRICAL

Inv.35	1 - VALANCE LIGHTING UNDER KITCHEN CUPBOARD - DOES NOT INCLUDE SWITCH - PRICE IS PER 4 FOOT SECTION- WOULD NEED 3
Line561	Note:
28May15 / 9Sep15	
Inv.35	1 - SWITCH - 2 WAY SWITCH FOR LIGHTING - PRICE IS EACH- FOR LIGHT VALANCE IN KITCHEN
Line562	Note:
28May15 / 9Sep15	

HARDWOOD FLOORING

Inv.35	1 - HARDWOOD - STANDARD - 2¼ MERCIER SOLID OAK - STANDARD COLOURS - LANDING
Line563	Note:
28May15 / 9Sep15	
Inv.35	1 - HARDWOOD - STANDARD - 2¼ MERCIER SOLID OAK - STANDARD COLOURS - UPPER HALL
Line564	Note:
28May15 / 9Sep15	

PLUMBING



CONSTRUCTION SUMMARY

Block 408 Unit 1 - 1 - The Napa 8 (TH-8C) Elev A

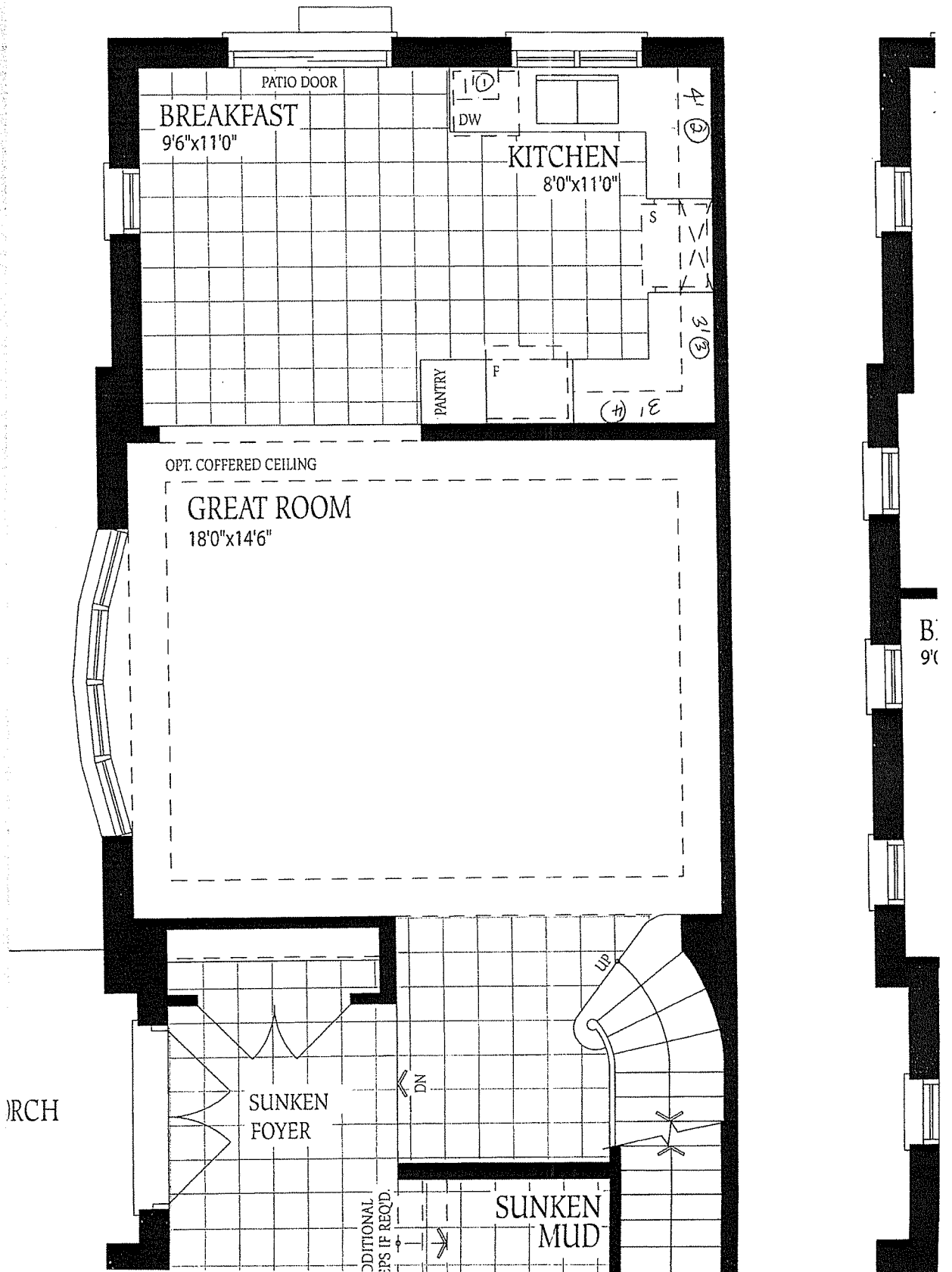
Inv.35	1 - CREATE DOUBLE SINK IN BATHROOM - AS PER SKETCH- STANDARD CUPBOARDS AND STANDARD COUNTERTOP AND DROP IN SINK
Line573	Note:
28May15 / 9Sep15	

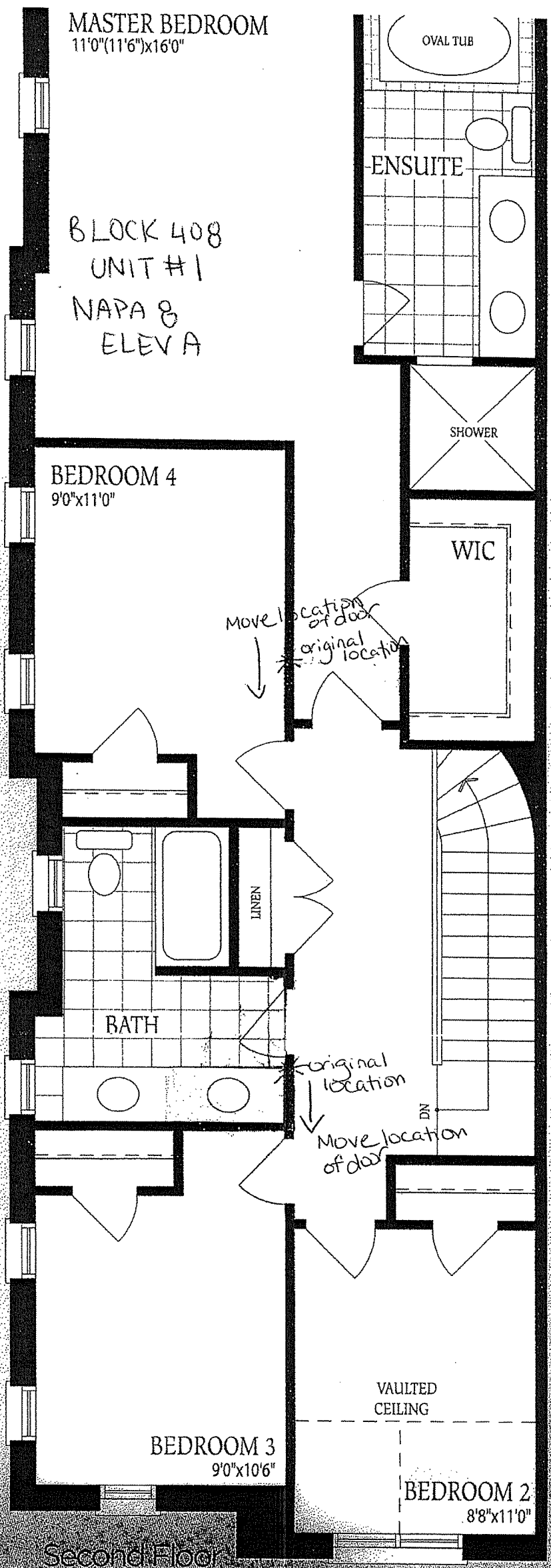
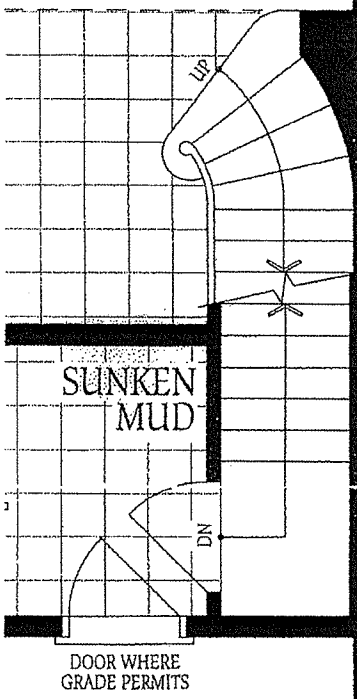
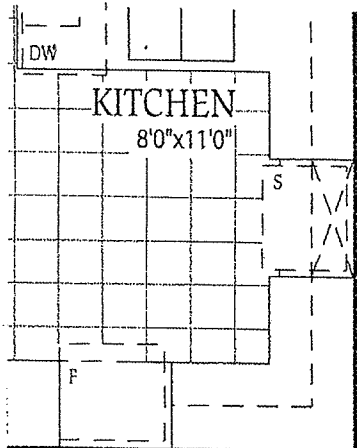
STAIRS AND RAILINGS / NOSINGS

Inv.35	1 - UPGRADE RAILING - UPGRADE 1 - OAK
Line567	Note:
28May15 / 9Sep15	

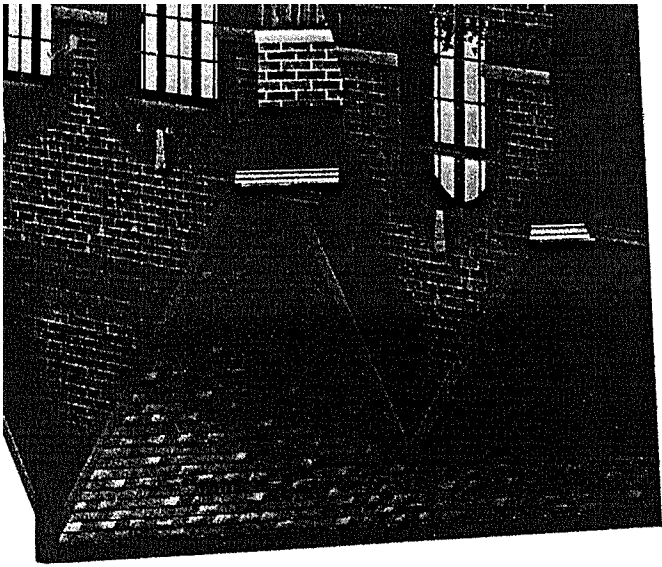
Block 408 unit 1
N-8-A

The Napa E





Second Floor
Elevation A



Block 408
unit #1
Napa 8 Elev 'A'



The Napa

8 2060 SQ.FT.

