



CONSTRUCTION SUMMARY

60 Right - 1 - The Sedona 1 (30-1) Elev A CEILINGS

Inv.190	1 - SMOOTH CEILINGS - MAIN FLOOR
Line1657	Note:
18Jul15 / 3Sep15	
Inv.190	1 - SMOOTH CEILINGS - 2ND FLOOR
Line1658	Note:
18Jul15 / 3Sep15	

ELECTRICAL

Inv.190	13 - POT LIGHT - LED - 1ST FLOOR NON INSULATED CEILING - PRICE IS PER POT LIGHT
Line1659	Note: 9 IN GREAT ROOM, 4 IN DINING ROOM AS PER SKETCH
18Jul15 / 3Sep15	
Inv.190	1 - SEPERATE SWITCH FOR POTLIGHTS IN GREAT ROOM
Line1661	Note:
18Jul15 / 3Sep15	
Inv.190	4 - POT LIGHT EXTERIOR
Line1663	Note:
18Jul15 / 3Sep15	
Inv.190	1 - DELETE STANDARD LIGHT FIXTURE IN GREAT ROOM
Line1662	Note:
18Jul15 / 3Sep15	

HEATING & VENTILATION

Inv.190	1 - AIR CONDITIONER - 2 TON
Line1664	Note:
18Jul15 / 3Sep15	

STAIRS AND RAILINGS / NOSINGS

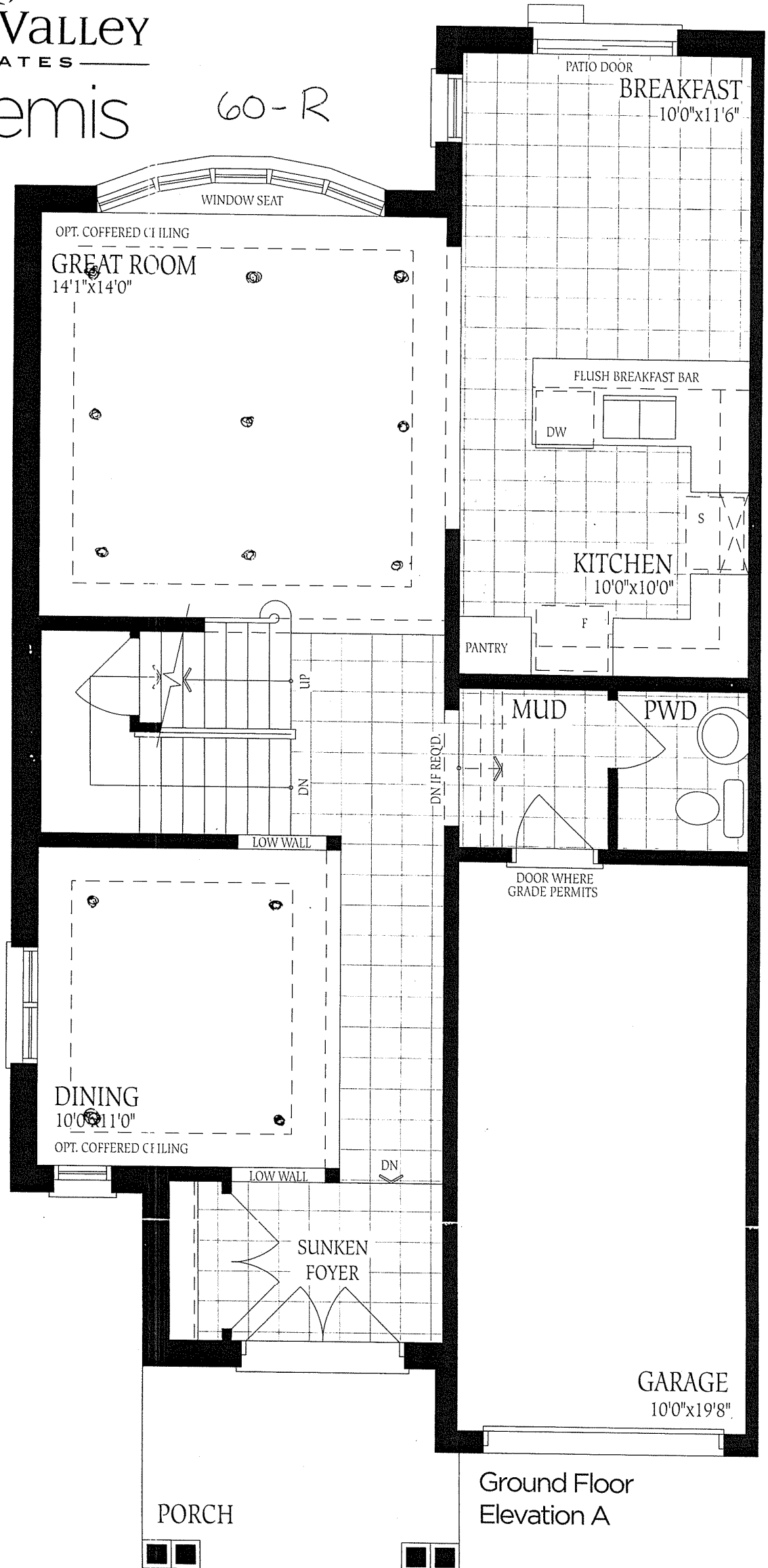
Inv.190	1 - UPGRADE RAILING - UPGRADE 2 - LEVEL 1 - WROUGHT IRON - BLACK
Line1665	Note:
18Jul15 / 3Sep15	



GreenValley
ESTATES

30' semis

60-R



Ground Floor
Elevation A

The Sedona 1 1935 S

