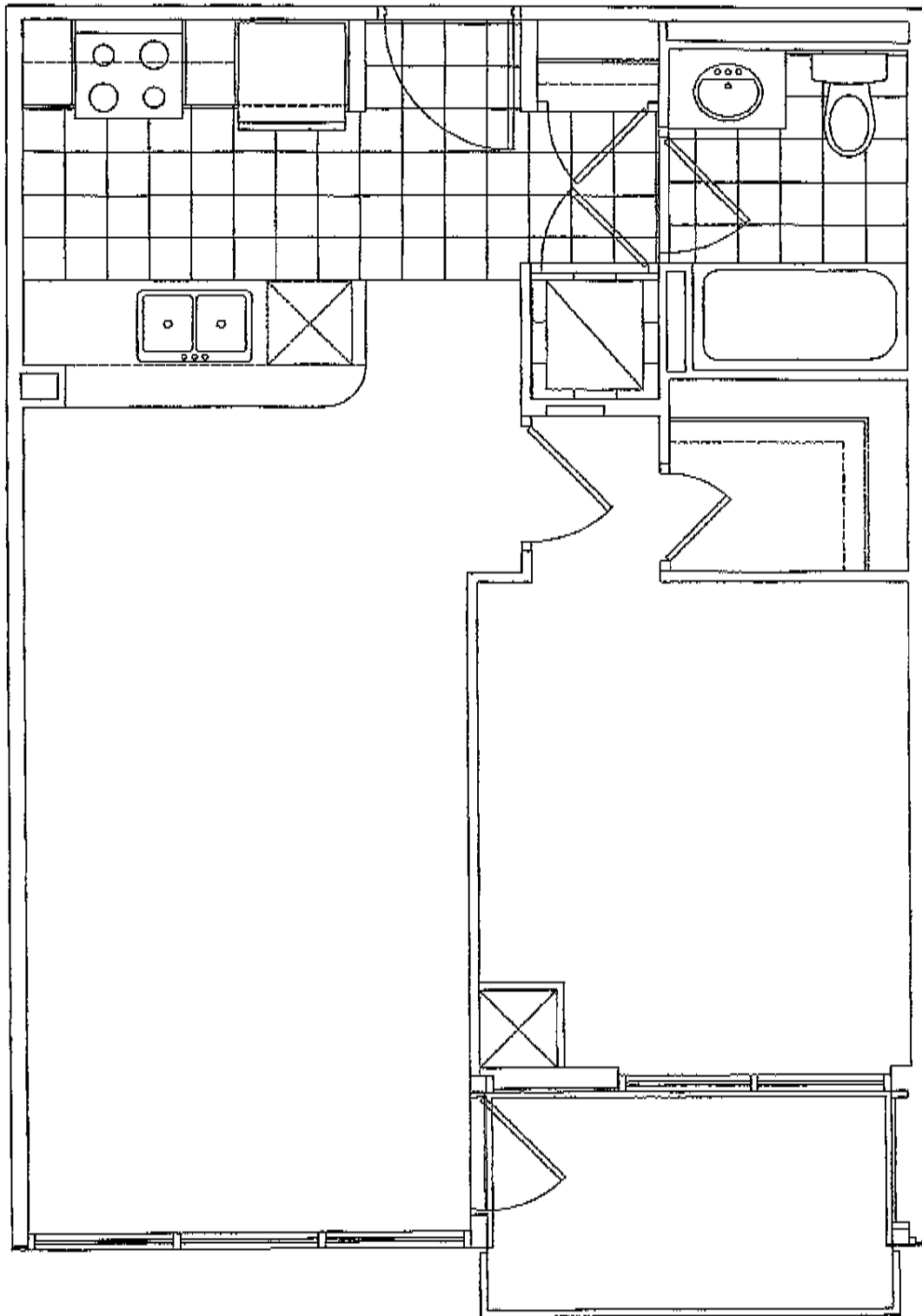


# SCHEDULE "C"

TO AGREEMENT OF  
PURCHASE AND SALE

Unit 11 Level 2 Suite 211



This plan is not to be scaled and is subject to architectural review and revision, including, without limitation, the Unit being constructed with a layout that is the reverse of that set out above. All details and dimensions, if any, are approximate, and subject to change without notice in order to comply with building site conditions, and municipal, structural and Vendor and / or architectural requirements. Floor plans and dimensions, if any, are subject to change without notice. Balconies and Terraces are exclusive use common elements, shown for display purposes only and location and size are subject to change without notice. Materials and specifications are as per vendor's samples and are subject to change without notice. Window size and type may vary.

E.&O.E.

## KEY PLAN



Purchaser's Initials                     

Purchaser's Initials                     

Vendor's Initials                     

20 AUG 2008